

1 Main Level  
1/4" = 1'-0"



REVISIONS:


Single Family Dwelling  
Alice Loop Subdivision

STATUS:  
FOUNDATION  
PERMIT  
DOCUMENTS

DRAWN BY: NMG  
CHECKED BY: NMG  
DATE: 7.18.21  
PROJECT #: 192737

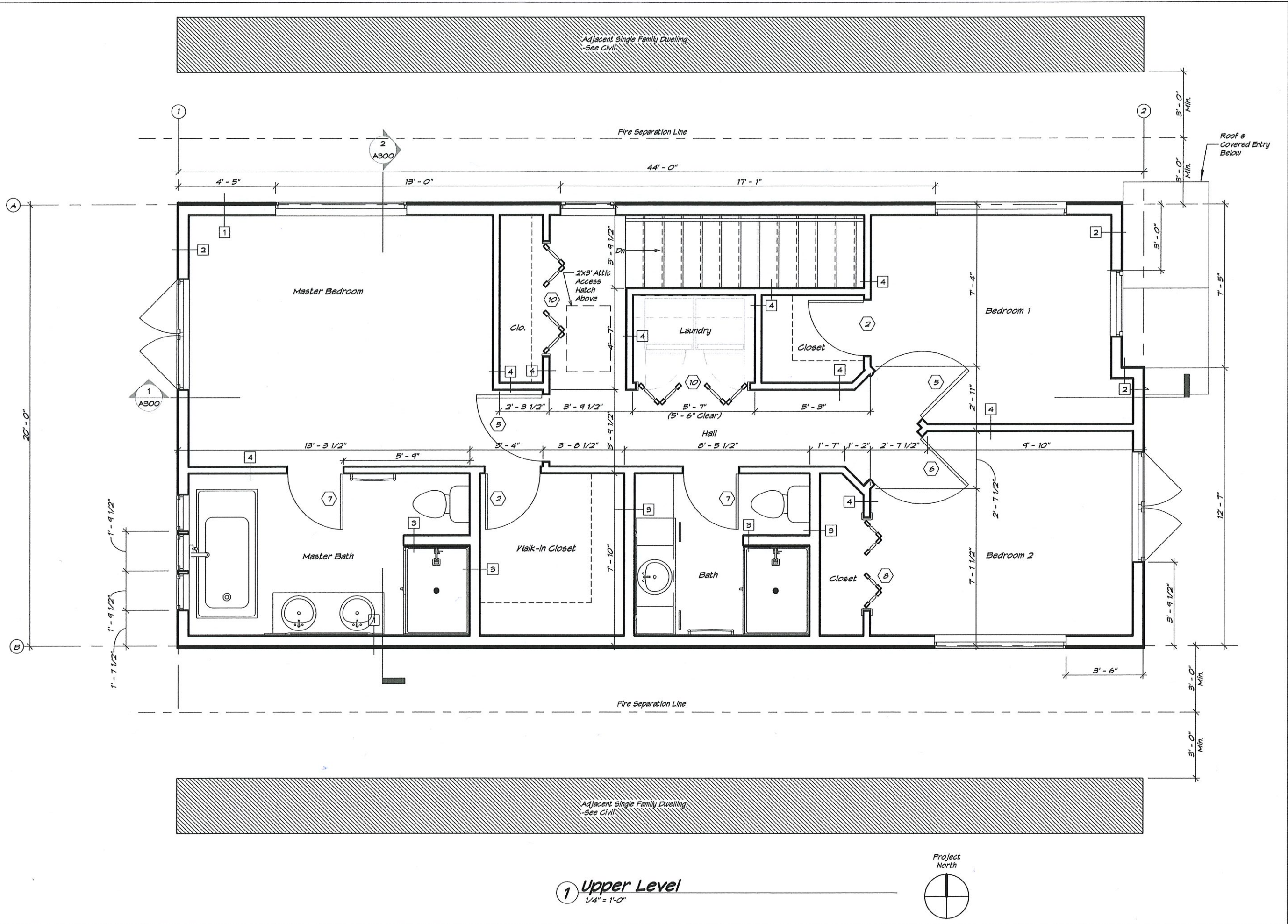
**R&M**  
R&M ENGINEERING-KETCHIKAN, INC.  
7180 REVILLA ROAD, SUITE 300  
KETCHIKAN, ALASKA 99901  
PH: 907.225.7187  
www.ketchikanengineer.com



SHEET DESCRIPTION:  
Main Floor Plan

A200

SHEET:  
07 of 25



1 Upper Level  
1/4" = 1'-0"



REVISIONS:

Single Family Dwelling  
Alice Loop Subdivision

STATUS:  
FOUNDATION  
PERMIT  
DOCUMENTS

DRAWN BY: NMG  
CHECKED BY: NMG  
DATE: 7.18.21  
PROJECT #: 192737

**R&M**  
R&M ENGINEERING-KETCHIKAN, INC.  
7180 REVILLA ROAD, SUITE 300  
KETCHIKAN, ALASKA 99901  
PH: 907.225.7187  
www.ketchikanengineer.com



SHEET DESCRIPTION:  
Upper Floor Plan

A201

SHEET:  
08 of 25