

10/23/2020 6:30:48 PM - O:\PROJECTS\SEATTLE\18707\200-18707-1900\1\CAD\SHEETFILES\D-101 HATCHERY BUILDING FLOOR PLAN.DWG - NORDHOLM, ERIK

F
E
D
C
B
A

1

2

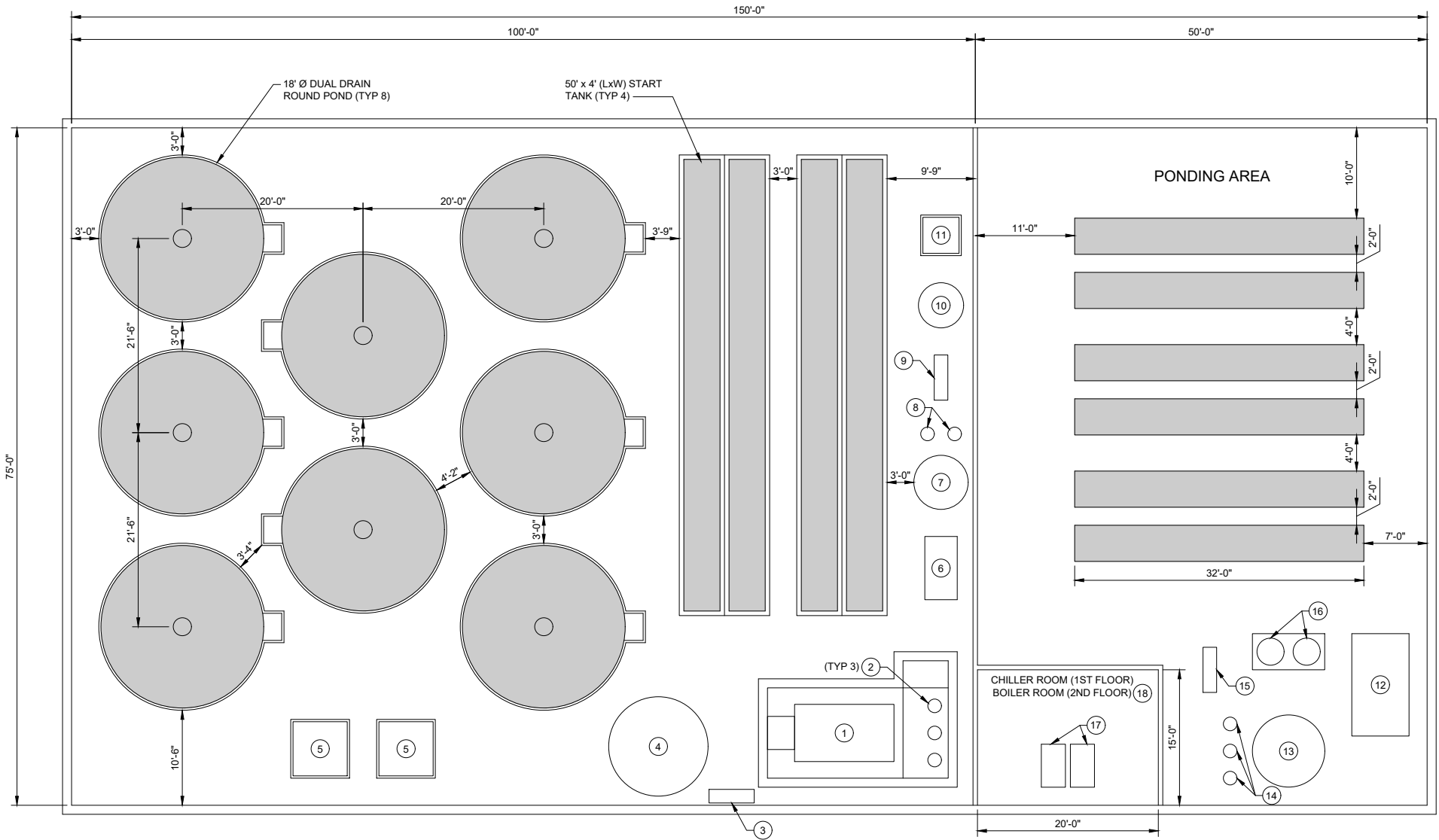
3

4

5

6

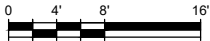
7



1 FLOOR PLAN
SCALE: 1/8"=1'-0"

RECIRC EQUIPMENT

- ① DF-1: DRUM FILTER INSTALLED IN CONCRETE TANK
 - HYDROTECH HDF 1606-2H
 - CAPACITY: 2,700 GPM
 - FILTER SIZE: 40 MICRON
- ② P-1, P-2, P-3: VERTICAL TURBINE PUMPS
 - CAPACITY: 1350 GPM (EACH)
 - HEAD: 25 FT TDH (APPROX. TO BE VERIFIED)
 - MOTOR: 15 HP (APPROX. TO BE VERIFIED)
- ③ UV-1: ENCLOSED UV DISINFECTION UNIT
- ④ FSB-1: 11' Ø FLUIDIZED SAND BIOFILTER. FIBERGLASS CONSTRUCTION.
- ⑤ OXY-1, OXY-2: 6' x 6' (LxW) CO2 STRIPPER ABOVE LOW HEAD OXYGENATOR. FIBERGLASS CONSTRUCTION. CAPACITY = 1,350 GPM (EACH)
- ⑥ DF-2: DRUM FILTER - SKID MOUNTED TANK
 - HYDROTECH HDF 802-1H
 - CAPACITY: 500 GPM
 - FILTER SIZE: 40 MICRON
- ⑦ SUMP-1: 6' Ø FIBERGLASS PUMP SUMP WITH OVERFLOW AND MAKEUP WATER CONNECTION.
- ⑧ P-4, P-5: CLOSE COUPLED, END SUCTION PUMPS
 - CAPACITY: 500 GPM (EACH)
 - HEAD: 25 FT TDH (APPROX. TO BE VERIFIED)
 - MOTOR: 5 HP (APPROX. TO BE VERIFIED)
- ⑨ UV-2: ENCLOSED UV DISINFECTION UNIT
- ⑩ FSB-2: 5' Ø FLUIDIZED SAND BIOFILTER. FIBERGLASS CONSTRUCTION.
- ⑪ OXY-3: 4' x 4' (LxW) CO2 STRIPPER ABOVE LOW HEAD OXYGENATOR. FIBERGLASS CONSTRUCTION. CAPACITY = 500 GPM
- ⑫ DF-3: DRUM FILTER - SKID MOUNTED TANK
 - HYDROTECH HDF 1604-1H
 - CAPACITY: 1,700 GPM
 - FILTER SIZE: 40 MICRON
- ⑬ SUMP-2: 8' Ø FIBERGLASS PUMP SUMP WITH OVERFLOW AND MAKEUP WATER CONNECTION.
- ⑭ P-6, P-7, P-8: CLOSE COUPLED, END SUCTION PUMPS
 - CAPACITY: 850 GPM (EACH)
 - HEAD: 25 FT TDH (APPROX. TO BE VERIFIED)
 - MOTOR: 10 HP (APPROX. TO BE VERIFIED)
- ⑮ UV-3: ENCLOSED UV DISINFECTION UNIT
- ⑯ GC-1, GC-2: 3' DIAMETER AERATION COLUMNS, FIBERGLASS CONSTRUCTION. CAPACITY = 850 GPM (EACH). INSTALLED ABOVE ELEVATED ALUMINUM HEADTANK.
- ⑰ DUPLEX 30 TON CHILLERS
- ⑱ 2 EA. 2 MBTU BOILERS. LOCATED IN MEZZANINE ABOVE CHILLER ROOM.



www.tetratech.com
217 SECOND STREET, SUITE 207
JUNEAU, ALASKA 99801
PHONE: 907-586-6400 FAX: 907-463-3677

PRELIMINARY
NOT FOR CONSTRUCTION

MARK	DATE	DESCRIPTION	BY

NORTHERN SOUTHEAST REGIONAL
AQUACULTURE ASSOCIATION
SAWMILL CREEK HATCHERY
EXPANSION
HATCHERY BUILDING
FLOOR PLAN

PROJ: 200-18707-19001
DESN:
DRWN:
CHKD:

D-101