



Providing High-quality Care in Sitka

MAY 2021

Sitka's Integrated Healthcare System

SEARHC continues to offer and expand community access to medical services in the City and Borough of Sitka, pursuant to Schedule 6.15(b).

SEARHC Specialty Clinics are increasing, ensuring Sitka residents have access to care close to home. Several new specialists will be traveling to Sitka from our partner medical organizations, ANMC and Swedish Medical Center. The expansion of specialty care includes three additional neurologists, three additional cardiologists, full-time orthopedic surgery services and more. For a listing of clinics, please visit searhc.org.

COVID-19 Mitigation Efforts

SEARHC has vaccinated over 13,000 people in Southeast and over 4,000 in Sitka, and we continue to urge others to *be part of the solution*. Working in partnership with the City and Borough of Sitka, SEARHC provides COVID-19 education, testing, vaccination and expanded telehealth services to ensure the community's access to care.

Testing for COVID-19 remains available in all communities to all patients. Identifying positive cases continues to be the most impactful mitigation measure to slow community transmission.

SEARHC has conducted more than 118,000 tests in Southeast since the beginning of the pandemic, including over **57,485 in Sitka alone, as of April 30, 2021**. Protective measures are still in place across the Consortium to ensure virus-free facilities, including universal masking, frequent and thorough hand hygiene, weekly testing and the availability of vaccinations to employees.

COVID-19 Vaccines Administered in Sitka

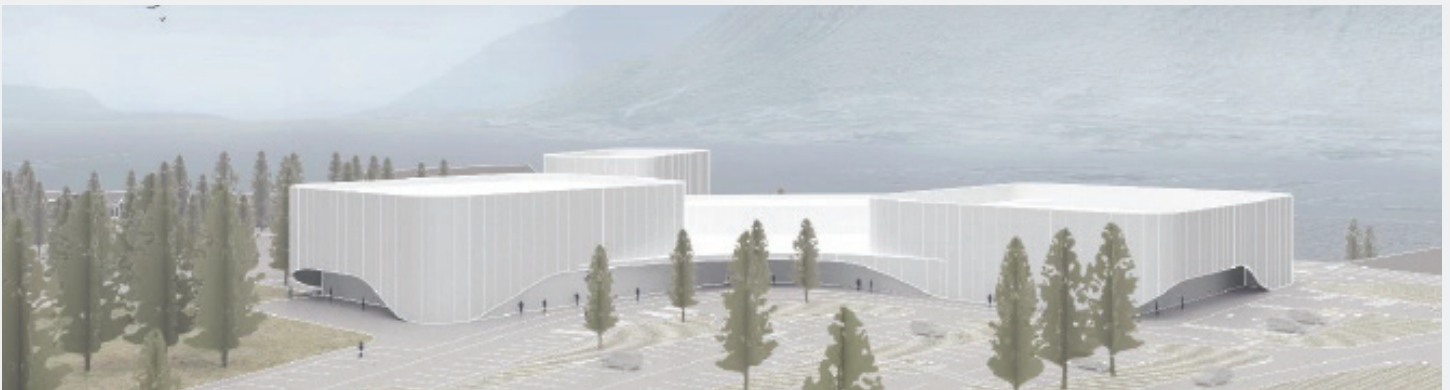
Data collected on May 2, 2021

- First dose – 4,086
- Second dose – 3,959



Mt. Edgecumbe Construction and Expansion Project

The Mt. Edgecumbe Medical Center's construction and expansion project to build a state-of-the-art medical facility is on track and goes beyond improving Sitka's access to expert healthcare. This project creates hundreds of jobs, expands workforce housing and delivers infrastructure improvements to Japonski Island.



- The new electrical, water and sewer infrastructure associated with this project is essential to the healthcare facility and also benefits Mt. Edgecumbe High School, the Sitka Rocky Guitterez Airport and the US Coast Guard.
- Additional electrical revenues for the City and Borough of Sitka alone are expected to be approximately \$1 million annually once the new facility opens.
- SEARHC will pursue green technologies such as ocean thermal energy conversion, electric vehicle infrastructure and more to meet required LEED Gold Certification standards.
- Local and regional businesses will benefit from increased revenues and economic activity generated by this project.

CONSTRUCTION TIMELINE

1

EARLY-MID 2021
Permitting

2

LATE 2021
Ground Breaking

3

2021-2024
Construction

4

LATE 2024
Hospital Opens