



Sitka's Integrated Healthcare System

SEPTEMBER 2020 REPORT FOR THE CITY AND BOROUGH OF SITKA



Committed to *High-Quality Healthcare*

Throughout the transition and into the future, all Sitka residents and visitors can expect to receive high-quality healthcare services from SouthEast Alaska Regional Health Consortium, including all former services and specialties offered by Sitka Community Hospital.

Pursuant to Schedule 6.15(b), SEARHC has continued to provide services requested by the City and Borough of Sitka, with similar or expanded scope and level of access. Services include:

Acute Care

- Inpatient Medical

Ancillary and Support Services

- Respiratory Therapy
- Radiology
- Laboratory

Hospital Rehab Services

- Physical Therapy
- Occupational Therapy
- Speech Therapy
- Surgery
- Obstetrical Services
- Emergency Department Services
- Swing Bed Services

Outpatient Services

- Primary Care
- Walk-In Clinic
- Infusion Services
- Home Health
- FASD Assessment Services

Skilled Nursing Facility

- Long-Term Care

Attending provider assigned for Sitka Pioneer Home

Food services, including meal service to the jail

Laundry

Specialty Care

We are committed to increasing access to Specialty Care services in Sitka. The following clinics and dates are currently scheduled:

- Cardiology: September 12, 28 and 29, October 9, 10, 26 and 27, November 6, 7, 23 and 24, December 5
- ENT: September 9 – 17, October 6 – 15, November 3 – 12, December 8 – 17
- Podiatry: September 1, 23 and 24
- Rheumatology: September 15 and 16, October 17 and 18
- Neurology: October 1 and 2, December 3 and 4

For an up-to-date schedule, please visit:

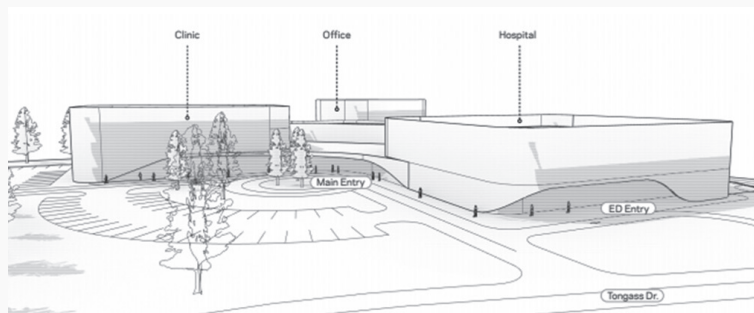
searhc.org/service/traveling-specialty-clinics/

Mt. Edgecumbe Medical Center Construction and Expansion

Healthy is expanding here.

SEARHC will begin a multi-year project to rejuvenate and modernize its hospital campus in Sitka with a new, state-of-the-art healthcare facility that increases access to high-quality healthcare across the region. Mt. Edgecumbe Medical Center Construction and Expansion will bring added benefits to local and referred patients including:

- A new 25-bed critical access hospital with four operating rooms
- A new medical office building housing Primary Care, Specialty Clinics with 50 treatment rooms
- Increased access to Laboratory and Radiology services for both clinic and hospital



CONSTRUCTION TIMELINE

1

FALL 2020
Permitting

2

EARLY 2021
Groundbreaking

3

2021–2024
Construction

4

LATE 2024
Hospital Opens

Upon completion of the new campus, the community of Sitka and patients across Southeast will benefit from enhanced services and a comprehensive continuum of care.

Visit searhc.org/expansions for updates and more information on SEARHC's commitment to delivering the highest possible care in Southeast.