

CLG GRANT APPLICATION: FY19

CLG:

City and Borough of Sitka

Project Name:

Japonski Island Boathouse NE Wall Repair and Entry Addition Exterior

PROJECT INFORMATION

See [Applying for Certified Local Government Grants: Writing a Successful Application](#) for more detail.

1. PROJECT DESCRIPTION – *If needed, use continuation pages provided at the end of this document.*

- a. Provide a brief introduction to your project including the aim, scope and significance of the project to your community.

This project is part of the larger rehabilitation effort of the Japonski Island Boathouse, which follows design documents by NorthWind Architects of Juneau. The design is to federal Historic Preservation standards and the Secretary of the Interior's Standards for the Treatment of Historic Properties, under the Standards for Rehabilitation, and were approved by Alaska's State Historic Preservation Office.

This phase of the project will restore and repair a historic exterior wall on the building's Northeast wing and complete the exterior of the newly constructed entry addition shell with siding, doors and windows.

Aim: The overall aim is to rehabilitate the Japonski Island Boathouse for adaptive re-use, so that it can serve the community of Sitka, as well as Southeast Alaska, as a maritime heritage center. The complete maritime heritage center will feature a restored marine railway and covered boat repair facility, with an observation deck overlooking the construction bay for visitors to observe work in progress. It will also house a workshop and exhibit space, which will also serve as classroom space for SMHS public programming.

Scope: The current project scope involves four elements:

Number one, we will commission the fabrication of custom single sash, hinge-less windows, in the same style as the original building's windows. The Boathouse's windows do not have any hinges but can easily be opened when the window's top latch is released as the sash simply leans inwards onto diagonal wooden stops (see Attachment Page 11). A previous CLG grant enabled the restoration of the building's original windows. There are four rough openings for windows included in the new addition and installing this type of window will maintain the building's character, and it is also a highly practical design. We will use the original windows as the template for the new addition's windows and will commission the fabrication of the windows to our specifications. Additionally, two exterior doors will be sourced and installed.

Volunteer labor will be utilized to frame and install the windows and doors and will be an opportunity to bring awareness of historic preservation and the Secretary's Standards especially in discussion of the windows' design, amongst the public that volunteers.

Second, siding will be installed onto the new addition. At present, the shell of the addition has been constructed, but lacks siding. New siding, fabricated from Number One Douglas fir or western red cedar, will look like the original, Number One Douglas fir siding. The siding that will be installed on the addition will then be painted a slightly different color from the white on the original building as to clearly differentiate it as not part of the original structure.

Again, this would be a labor-intensive element that would be ideal for volunteer work parties and education.

(Continuation Page 1)

b. List any previous HPF grants this project has received. (*Cite HPF # or grant name*)

FY2018: Japonski Island Boathouse, Southwest Wall, Grant #ST-18-3

FY2017: Japonski Island Boathouse Wall, Foundation, Utility Rehabilitation, Grant #17004

FY2015: Japonski Island Boathouse Door Rehabilitation, Grant #15015

FY2014: Japonski Island Marine Ways. City and Borough of Sitka, Grant #14607
Restoring all of the building's windows and for electrical wiring by a contractor.

FY2005: Japonski Island Boathouse, Grant #05454.
Foundation repair, artifact inventory and storage

FY2004: Japonski Island Boathouse Rehabilitation, Phase II, Grant #03428
Secure and paint building, clear site, install project sign.

FY2003: Japonski Island Boathouse Design, Grant #03410
Structural survey and hazardous materials survey

c. Briefly describe the relationship of this project to past, present, or future preservation work.

This project is the continuation of an ongoing rehabilitation and adaptive reuse project of the Japonski Island Boathouse. It will utilize the same SHPO-approved design documents used in previous projects and will be used in future work and continues the practice of engaging and educating the local community as volunteers in the preservation effort.

In the past, the Sitka Maritime Heritage Society has stabilized and painted the Boathouse, restored the foundation, replaced the roof, and inventoried the building's contents. Historic windows have been restored, power, heat, and lighting has been added to the main workshop area (SW Wing). Additionally, historic doors have been repaired, a small outbuilding was moved away from the main structure, the gable wall was repaired, the existing winch shed was documented and removed. Concrete foundation and footings for an accessible ramp and entry have been added.

Most recently, the shell of an addition has been erected through the support of an HPF grant (#ST-18-3), and currently underway, an original historic exterior wall on the SW wing will be repaired as part of that same grant project.

This proposed project will be a continuation of past and present preservation work and continues a wider, ongoing effort to educate the community and bring awareness of the importance of historic preservation, which is accomplished through open house events at the Boathouse and volunteer work parties. It also connects to the future work to complete the repair of all walls and enable the Boathouse to be regularly occupied. The project is the next step in the overall Japonski Island Boathouse rehabilitation project.

2. PRESERVATION OBJECTIVES

- a. How does the project relate to [annual CLG grant priorities](#) established for this fiscal year? (Cite relevant grant priorities and explain how each relates to your project.)

1. *"Projects that increase public awareness of historic preservation and establish new partnerships, particularly with local tribes and under-represented groups, to strengthen their local historic preservation program. Also encouraged are projects that install interpretive signs calling attention to significant historic places, and produce educational materials emphasizing historic preservation and educate property owners about historic preservation laws and programs, especially about archaeological resources on lots with buildings."*

This project has a strong public awareness component, as community members will be engaged as volunteers throughout all construction elements. Volunteers will be made aware of the Secretary of the Interior's Standards through presentation on their application in this and past projects on the Boathouse. Awareness will also be brought to the wider community at the conclusion of the construction elements during an open house event, where the public will be invited to learn about the process and see progress on the restoration of the Boathouse firsthand. In addition to community engagement, prior to the initiation of construction elements, an informative handout aimed at bringing awareness of historic preservation, and specifically explains preservation work planned and completed on the Boathouse will be created for distribution. Also, during and after the project, photographs and progress updates will be posted on the Sitka Maritime Heritage Society's website and social media to bring further public awareness. (Continuation Page 2)

- b. How does the project relate to the goals and objectives of the [State Historic Preservation Plan](#). (Cite relevant goals or objectives and how your project would further them.)

Goal 4. Preserve and protect Alaska's cultural resources.

4.1. Encourage appropriate treatment of cultural resources.

4.1.a. Encourage the use of the Secretary of the Interior's Standards for the Treatment of Historic Properties.

4.1.b. Provide technical information and guidance about maintenance and protection of historic and archaeological resources.

4.1.c. Develop and disseminate guidance on ways to avoid and minimize effects to historic resources.

This project is largely focused on encouraging (and practicing) the appropriate treatment of a historic property, specifically the use of the *Secretary of the Interior's Standards for the Treatment of Historic Properties* (Goal 4.1.a). The Japonski Island Boathouse represents more than one era in Sitka's history, and our community's shared heritage connected to maritime skills and knowledge.

We will also be providing technical information and guidance about maintenance and protection of a historic resource (Goal 4.1.b) throughout the volunteer work parties with instruction and education material, community members will be learning about and taking part in the preservation of a historic property.

Materials that will be produced for and during the project, such as the informational handout and website postings are a dissemination of guidance on ways to avoid and minimize effects on historic resources (Goal 4.1.c). (Continuation Page 2)

- c. Describe how the project meets an identified historic preservation priority of your community. Does the project contribute to the implementation of your local historic preservation plan? If so, how?

Sitka Comprehensive Plan 2030 - Historic, Cultural and Arts Resources Goal: Celebrate Sitka's historic, cultural, and art resources, which are: Ethnically, religiously, and racially diverse, Highly valued and essential to defining Sitka and local quality of life, Integral to the economic base of the community.

The rehabilitation and re-use of the Japonski Island Boathouse is a celebration of Sitka's diverse maritime heritage and our unique local history, which is a defining part of our local culture. The Boathouse is an iconic structure on the Japonski Island shoreline. It has played a role in multiple defining eras of Sitka's history, beginning with the Sitka Naval Operating Base and later as the repair facility for Sitka's fleet of Shore Boats. Its multilayered history reflects the development of contemporary Sitka's population, economy, and culture. This project will contribute to its preservation and eventual re-use for future generations. Moreover, its re-use as a maritime heritage center will potentially contribute to the economic vitality of our community.

3. PROJECT PERSONNEL- *The Project Manager must have proven experience working on historic preservation projects. If the project is a survey, inventory, development, or National Register nomination the PM must meet the professional qualification standards in 36 CFR 61. If not identified in the application, the Office of History and Archaeology must review selection of Project Manager prior to finalization of the contract with the individual.*

- a. Note who will act as Project Manager (PM). Attach a résumé showing the PM meets the professional qualifications. List any previous HPF Projects the PM has worked on. *(If planning to contract with PM after grant is awarded outline the job qualifications that will be required.)*

The Sitka Maritime Heritage Society Executive Director, Laura Bennett, will manage the overall project, tracking expenditures and submitting the quarterly and final reports. (Resume Attached)

- b. Identify the local government personnel who will act as Grants Manager for the project.

Local government personnel will be the City and Borough of Sitka Grant Accountant who will review and submit quarterly reports on behalf of the SMHS.

- c. Describe the local historic preservation commission's role in the project. Attach a resolution from the commission supporting the project.

The Sitka Historic Preservation Commission reviews Certified Local Government grant applications. The Commission has been greatly supportive of the work on the Japonski Island Boathouse since it first began. The SMHS will also be presenting regular progress reports to the Commission.

- d. Identify volunteer personnel and their tasks.

Volunteer personnel include Dr. Brinnen Carter, Chief of Resources at the Sitka National Historical Park. Dr. Carter has worked extensively with historic preservation projects with the National Park Service and will be creating a plan for the volunteer work on the building.

Other volunteers will come from the SMHS board, membership, and the public. Our Board members (Rebecca Poulson, Mike Litman, Joe D'Arienzo, Brinnen Carter, Stan Barge, Josh Wisniewski, and Bruce Gazaway) will bring to this project their extensive and varied experience, specifically in building construction, historic preservation education, and maritime skills and history.

We are fortunate to have an active community of volunteers and membership who have helped on previous work parties, and many of whom bring years of professional skill in historic preservation, carpentry, and boatbuilding.

- e. Identify any contractors to be used and expected duties. Attach résumés for all qualified historic preservation professionals working on the project.

The SMHS will commission custom windows for the addition to the specifications in our design. The chosen window maker will be made familiar if they aren't already with the *Secretary of the Interior's Standards for the Treatment of Historic Properties*.

4. **WORK PLAN-** *Ensure you thoroughly address all items necessary for your project type. See [Applying for Certified Local Government Grants: Writing a Successful Application](#) for more detail. Use continuation sheets if needed.*

- a. Explain how the project will be undertaken.

All work is to complete construction documents by NorthWind Architects, which have been approved by the SHPO.

Before the grant is awarded, we will submit the project to the State Historic Preservation Officer for review per Section 106 of the NIPA. The property already has a historic covenant, but it will be reviewed and extended if necessary.

The work will have 3 main construction elements, and a public education element:

1) Addition Doors and Windows: In 2019, the new entry addition shell was erected on the West side of the Boathouse, but only has rough openings for the doors and windows. This work element of this project is to complete the exterior of the new entry addition by framing and installing 4 windows, in the same simple hinge-less tilt-out style of the original building's windows. A door to the utilities room and a glass entry door will be framed and installed.

2) Addition Exterior: The exterior of the addition will be completed by installing siding and ventilation strips over the existing tar paper and plywood. The siding will be painted in a color that differentiates it from the original structure. The insulation and interior finishing of the addition will be completed later, as will the entry ramp, deck, and stairs.

3) Repairing original exterior Northeast wall: This step will be completed by first removing the original exterior siding and trim, and carefully documenting it. Then we will place insulation, an infiltration barrier, and plywood sheathing on the exterior. The original siding and trim will then be replaced over ventilation strips, and parts found to be deteriorating will be repaired or replaced as needed. Jamb extensions will be installed for the extra depth of the wall. Meanwhile, the two existing door frames will be widened, and new multi-panel doors will be installed and fitted with panic bar exit device hardware for fire safety.

4) Public awareness: Public work parties will be held to complete the repair work on the original exterior Northeast wall. At least one of the work parties will include a presentation and instruction on the methods of work and education about the *Secretary of the Interior's Standards for the Treatment of Historic Properties* and how they are applied to the boathouse rehabilitation project. At the conclusion of the construction elements, an open house event will be held for the public to further learn about the work done. A display will be prepared for the event, as well as handout materials aimed at increasing awareness of historic preservation, specifically the *Secretary's Standards* and their application in the Boathouse rehabilitation project.

- b. Describe the geographic area encompassed by the proposed project. For survey, inventory, development, and National Register nomination projects, attach maps of the project area. Include the estimated number of buildings, structures, sites, square miles, etc., to be addressed.

This proposed project will take place at the Japonski Island Marine Ways, 1490 Seward Street, Sitka, Alaska. All work will take place in, on or adjacent to the building. (Map and photos attached)

- c. Cite any planning studies, condition assessments, design drawings, research reports, publications, or other sources of relevant information you plan to use for this project.

This project will utilize design documents by NorthWind Architects of Juneau. The design is to federal Historic Preservation standards and the *Secretary of the Interior's Standards for the Treatment of Historic Properties*, under the Standards for Rehabilitation, reviewed by the National Park Service, and were approved by Alaska's State Historic Preservation Office.

- d. Provide a work schedule showing months, expected activities, and benchmarks to achieve throughout the grant period of performance.

Upon award of the grant, we will do the Section 106 request, and extend the property covenant if needed.

January 2020 - March 2020: we will commission the window fabrication, purchase materials, including doors and panic hardware, plan the work in detail, in particular, the volunteer portions, and how construction work will be carried out with limited impact on the use of the building.

April 2020 - September 2020: Work will begin and continue throughout the spring and summer. Review of draft products.

Upon completion of the work, we will hold a public event at the Boathouse to promote and celebrate the project, with tours of project work and a display on historic preservation and the work completed during this project and throughout the full Boathouse rehabilitation.

- e. If this is a development project, describe your public outreach component. How and when did you involve the public, any potentially affected agencies, entities, and tribes. List which entities and individuals contacted, dates of involvement, and comments received.

The SMHS worked closely with the City and Borough of Sitka to facilitate the transfer of the property from the Department of Natural Resources, with the intention of leasing the property to SMHS (finalized in 2005) for the purpose of rehabilitation and re-use as a maritime heritage center.

In 2004 a schematic design was completed by Welsh Whitely Architects of Ketchikan (funded by an HPF grant). In the creation of this design, the community was consulted through a series of public meetings. There was strong public interest, and the meeting discussions, particularly about the activities to take place within the restored Boathouse, were taken into consideration in the creation of the final design, featuring a workshop area, exhibit area, and entry addition.

Most recently, in 2019, SMHS has sought and received guidance from the Sitka Tribe of Alaska Cultural Resources Committee regarding elements of the first exhibit to be installed in the planned exhibit wing as part of the overall rehabilitation project as a maritime heritage center.

5. FINAL PRODUCTS

- a. Describe publications, workshops, audio-visual materials, reports, websites, brochures, survey materials, nominations, interpretive signs etc., that will be produced as part of the proposed project. Identify the intended audience and where the public will be able to access these materials. Describe how you will inform you community about the project.

The repair of the Northeast wall of the Northeast wing of the Japonski Island Boathouse and installation of two new doors with fire safety hardware.

The completed exterior of the addition shell - The exterior of the new addition will be competed in accordance with the Japonski Island Boathouse rehabilitation design plans by NorthWind Architects.

Volunteer work parties to complete the planned construction elements - Volunteers will be trained on the work that will be done, according to the volunteer work plan, in accordance with the *Secretary of the Interior's Standards*. They will also be educated on the *Secretary's Standards*.

Educational material - As a supplement to the instruction given at volunteer work parties, a brief handout will be produced that will be aimed at educating the public about historic preservation and bringing awareness of the *Secretary's Standards*, and their application within the Japonski Island Boathouse rehabilitation project. This will also be posted on our website and made available the open house event at the conclusion of the project. This material may be utilized in subsequent work parties and be added to and updated as necessary.

Open house - A public event where community members can observe the new construction work on the Boathouse and learn about the process of completing it through displays of progress photos and information. Educational materials produced as part of this project will also be made available to the public at this event.

6. ADDITIONAL INFORMATION

- a. Attach letters of commitment and support, as appropriate, from teachers, historical societies, museums, Native groups, and others. (*Note attachments below.*)

(Letters of Support to be attached when received)

- b. Attach any other relevant information, such as copies of photographs. (*Note attachments below.*)

Resume for Laura Bennett, Project Location Maps, Design documents, Photos of addition shell, Photos of Northeast wing and Northeast wall details

7. BUDGET: Maximum Federal Request of \$25,000 (includes State indirect cost)

Your budget submittal shall consist of four parts: three tables and one narrative. *See example tables and blank form in Excel, and narrative portion to complete below.*

- a. Budget Details table showing how costs were estimated.
- b. Budget Summary table identifying planned cost share of 60% and 40%.
- c. Matching Share table showing sources of match.
- d. Narrative explaining costs in detail.

BUDGET NARRATIVE: Describe activities to be performed under Personal Services, Contractual Services, Supplies/Materials, Travel, and Other cost categories.

- a. Personal Services: describe work each position/person will perform for the proposed project.

The project manager will manage the overall project, track expenditures, compile the quarterly and final reports, develop materials, organize and advertise the volunteer events and organize, advertise, and facilitate the final event.

Community volunteers will undertake the construction portions, under the guidance of skilled volunteers and board members. Additional volunteer work, beyond budgeted, will likely be contributed.

- b. Contractual: List contractor name(s), if known. Describe work each will perform.

N/A

- c. Supplies/Materials: Describe types of materials and/or supplies required for this project, how they relate to the project, estimated quantities, etc.

The materials for the wall repair include: 2 multi-panel exterior doors, panic bars, unfaced insulation (24"x 3.5"), tar paper, paint, ventilation strips, plywood, and siding. Fasteners and other smaller materials are included as 7% of materials cost.

Materials for the addition exterior are siding, ventilations strips, paint, 4 windows, 1 solid core entry door with full glazing, and 1 multi-panel exterior door. The work platform will be utilized for the addition exterior work and is based on a 3-week rental of 4 scaffolding units.

- d. Travel: Identify who will be traveling, how many trips are anticipated, trip purpose, and destination.

N/A

- e. Other: Identify other costs which do not fall into one of the above categories. Explain purpose and relevance to this proposed project.

The City and Borough of Sitka administrative fee is a percentage-based fee for administration of the grant.

CHECKLIST

Applicant, has your entity:

- ☐ maintained current certification under the Certified Local Government program?
- ☐ signed and notarized this application?
- ☐ signed the form titled: *Willingness to Comply with Grant Requirements*?
- ☐ provided the information requested on each page of the application package?
- ☐ included a public outreach component?
- ☐ attached maps showing location of project?
- ☐ attached photographs or clear photocopies showing overall character of properties for survey, inventory, National Register nomination, predevelopment and development projects?
- ☐ attached letters of support from the community and, if needed, property owners?
- ☐ attached a resolution from the City or Borough's governing body (or indicate one has been requested prior to the Alaska Historical Commission meeting to recommend awards.)
- ☐ explained historic preservation commission involvement in the project, and addressed its role in the review process?
- ☐ checked your budget for accuracy?

Deadline: Applications are due by 12:00 pm on Wednesday, July 31, 2019.

Only complete, signed, dated, notarized applications will be considered.

Submit applications (and questions) to the following email: HPF.Grant.Applications@alaska.gov

Question 1a (continued):

Third, the Northeast wall of the Northeast wing will be repaired, presently it is uninsulated and much of the exterior siding is showing signs of deterioration, it is checked and very weathered (see Attachment Page 12). The walls will have insulation, infiltration barrier, plywood sheathing, and ventilation strips, and reinstallation of the original siding as much as possible. Damaged pieces will be repaired, or replaced if too far deteriorated, in accordance with the *Secretary of the Interior's Standards for Rehabilitation*. Jamb extensions for the thicker walls will be made and installed, and trim will be put back on. Eventually all of the original building's walls will be repaired and insulated in the same manner.

Although we only plan to complete this one exterior wall, we will keep future work in mind, extending tar paper to wrap around corners. This work will entail removing the siding and trim from the outside, therefore not disturbing the interior of the building and enabling it to remain in use (if needed). We will document the walls before and during the work.

During this element, the two existing door frames will be widened, and two new multi-panel doors will be installed, which will swing outwards and be fitted with panic bar exit device hardware for fire safety, and compliance with city code for its planned use as an exhibit space.

Fourth is public education. Each element will be completed through volunteer work parties, where we will share the principals of historic preservation, as well as practical methods of adding infiltration barrier and weather proofing while preserving the look and feel of a historic building. Participating volunteers will learn through practical application of the *Secretary of the Interior's Standards*. The purpose for the methods used will be explained during work parties as they are applied, for example the choice of a different paint color for the addition exterior that distinguishes it from the original building, or the re-use of original siding in wall repair. Educational material brining awareness of historic preservation will be developed and distributed to volunteers and made available on the SMHS website to interested members of the public. The non-volunteering public will also be able to learn about and observe the work completed at an open house event at the conclusion of the project's construction elements.

SIGNIFICANCE: The rehabilitation and re-use of the Japonski Island Boathouse is significant to the community of Sitka and Southeast Alaska for several reasons. The Boathouse is a contributing structure of the *Sitka Naval Operating Base and U.S. Army Coastal Defenses National Historic Landmark District*. It is one of the last wooden working waterfront structures in Sitka, and one of the few remaining wooden structures in the Landmark District, and the only one that is undergoing restoration.

The Boathouse is locally significant as a reminder of how the buildup for WWII transformed Alaska and brought attention and population to Sitka. The Boathouse was built in 1941 by the military and was part of the only fully operational military defense installation in Alaska at the outbreak of World War II.

After the war, it remained in use for three decades as the service and maintenance facility for the Shore Boats; ferries which brought passengers between the town of Sitka and Japonski Island, where the military installations had become the now-vanished federal community of Mt. Edgecumbe. The Boathouse became iconic to Sitka during this era through its connection to the Shore Boats. Many Sitka residents have firsthand experience and fond recollections of using the Shore Boats in their daily lives. To many, the Boathouse represents the Shore Boat years, and that unique way of life and era in Sitka's history, making its restoration and re-use significant to the community. The Boathouse is overall important for the role it played when the United States entered World War II, as well as the role it continued to play for the community of Sitka afterwards. (Continuation Page 2)

Additionally, the larger adaptive re-use project would provide the community with a space that recognizes, records, and celebrates local and regional maritime knowledge and heritage. There are maritime heritage centers around the country, but Southeast Alaska, a region with tremendous maritime history, still does not have a heritage center of its own. This project is a step towards this goal and providing the community with a unique space that celebrates and preserves its diverse maritime heritage.

Question 2a (continued):

1. *“Projects that address the rehabilitation of historic properties and leverage funds and resources. Restoring and preserving defining elements of historic properties and addressing sustainability of them are encouraged.”*

A major element of this project is rehabilitation work on a section of the original historic building. In the wall repair construction element, we will be re-installing as much original siding and trim as possible, only replacing sections that are deteriorated beyond repair. The wall repair also addresses the building's sustainability as we will be adding insulation and weatherizing the section to be worked on. Eventually all walls will be given the same treatment.

Question 2b (continued):

Goal 6. Strengthen local preservation efforts.

6.4.b. Encourage local residents to be stewards for their cultural resources.

This project will mobilize local volunteers in a historic preservation effort within their community and will equip them with knowledge and skills in historic preservation, thereby encouraging and empowering them to be stewards for their cultural resources (Goal 6.4.b).

LAURA ELIZABETH BENNETT

EDUCATION

- 2017 **Master of Arts with Distinction**
International Cultural Heritage Management
Durham University – Durham, UK
- Presented at Hatfield MCR Research Symposium
 - Modules covering strategic planning, financial management, scenario analysis, heritage outreach and education, and the political, social and legal contexts of cultural heritage.
 - MA Dissertation: “Underlying Priorities within Heritage Policy: The Management and Legacy of Cultural Plunder in the United Kingdom”
- 2010 **Bachelor of Arts**
Art History
Pace University – New York, NY
- Magna Cum Laude
 - Pfzorheimer Honors College
 - Alpha Chi National Honors Society
 - Studied abroad at University College Cork, Ireland for two semesters, 2008-2009
 - Member of ‘Collage’ Art History Club

RELEVANT PROFESSIONAL EXPERIENCE

- March 2019 - Present **Executive Director**
Sitka Maritime Heritage Society – Sitka, AK
- Advertises, organizes, and facilitates public events, classes, and fundraisers
 - Compiles and submits timely grant reports for historic preservation project
 - Organizes volunteer events and recruits volunteers
- April 2018 -January 2019 **Community Economic Development Facilitator, Peace Corps Volunteer**
Georgian Red Cross Society – Kvareli, GE
- Conducted community needs assessments
 - Worked with team to design and carry out community project at training site
 - Organized and lead adult and youth English clubs
 - Implemented organizational management techniques and tools
 - Successfully completed intensive project design and management training
- March 2017 - February 2018 **Community Outreach Coordinator, AmeriCorps Member**
Friends of Sheldon Jackson Museum – Sitka, AK
- Streamlined membership management through creation of member database
 - Analyzed membership trends and developed membership recruitment strategies
 - Recruited and managed event volunteers
 - Ensured compliance with state fundraising regulations
 - Assisted with organization of large public cultural event
 - Expanded outreach through launch of organization’s first email newsletter, new social media account, informational tables, and radio public service announcements
 - Regularly reported to and consulted with the Board

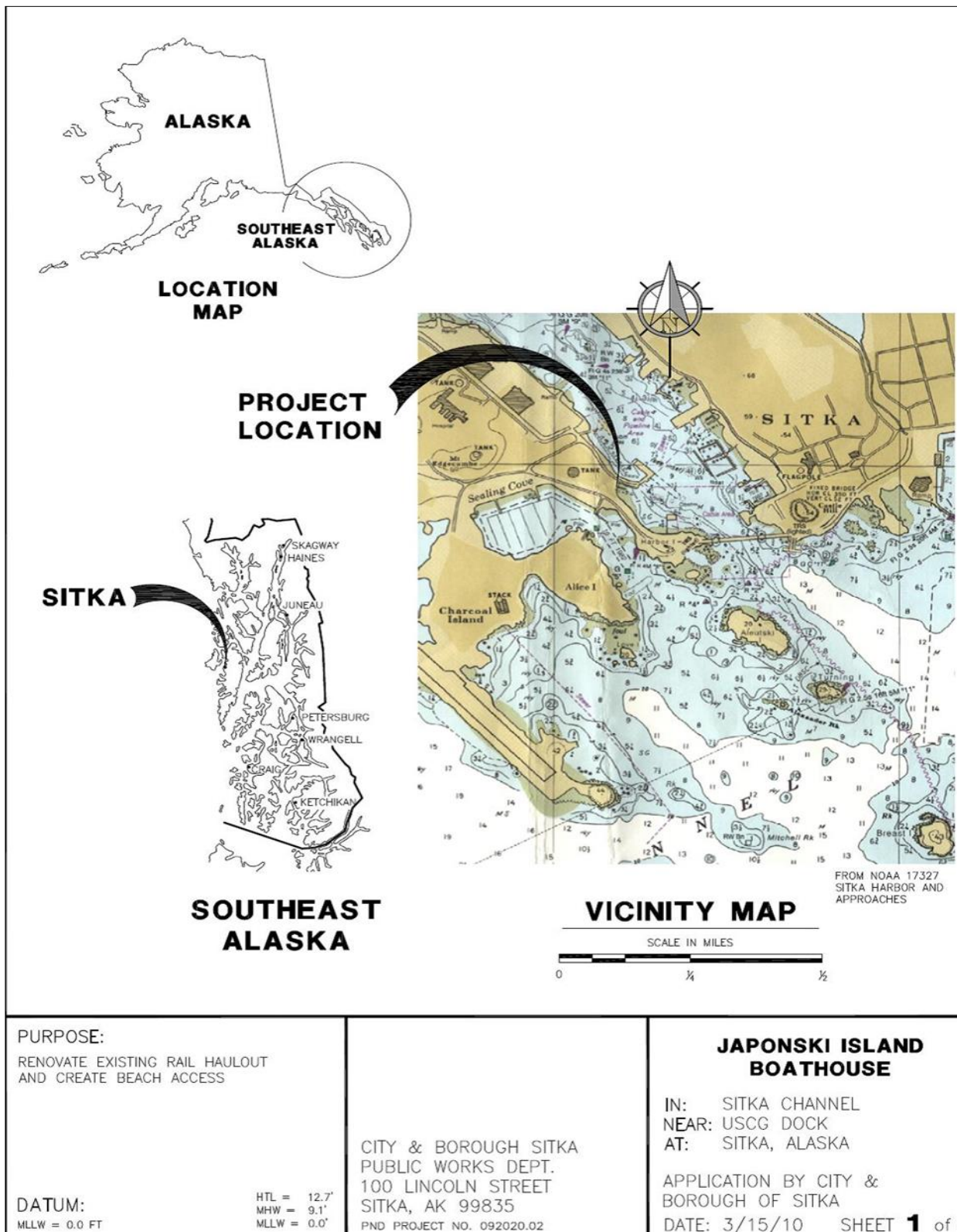
January 2018 - February 2018	Curatorial Helper Sitka Historical Society – Sitka, AK <ul style="list-style-type: none">• Helped to safely transport museum artifacts to permanent collections storage using proper handling procedures• Securely packed paper and textile artifacts for long-term storage• Assisted curator with recording artifact inventory
March 2016 - May 2016	Intern European Shoah Legacy Institute – Prague, CZ <ul style="list-style-type: none">• Sharpened grant writing skills by assisting project manager with funding proposal and concept• Shared facts and resources with the public through management of social media accounts• Researched grant opportunities and other potential funding sources for future projects
January 2011 - November 2011	Administrative Admissions Coordinator Pace University – Lenox Hill Hospital PA Program – New York, NY <ul style="list-style-type: none">• Handled logistics and facilitated in-person applicant interview events• Provided information to students and applicants via telephone and email• Maintained applicant database• Assisted with program outreach at public information sessions

RELEVANT VOLUNTEER EXPERIENCE

April 2017 – March 2018	Sitka Historical Society – Sitka, AK <ul style="list-style-type: none">• Responsible for reading, handling, summarizing and inventorying correspondence from a Navy dentist serving in Sitka during World War II into PastPerfect Database.
September 2017 - March 2018	Greater Sitka Arts Council – Sitka, AK <ul style="list-style-type: none">• Assisted with public events including event setup, seeking donations of items and services from local businesses, and creating promotional materials, also helped with researching and identifying funding opportunities.
October 2014 - November 2014	Kirkhaven Nursing Home – Rochester, NY <ul style="list-style-type: none">• Improved recordkeeping by redesigning activity attendance Excel workbook with efficient formulas and more user-friendly interface based on staff input and departmental goals.

HONORS & AWARDS

2016	Hatfield MCR Research Award
2011	‘Highest Academic Achievement in Art History’ Award
2011	Alternate for Fulbright ETA Program
2010	Excellence in Research Award



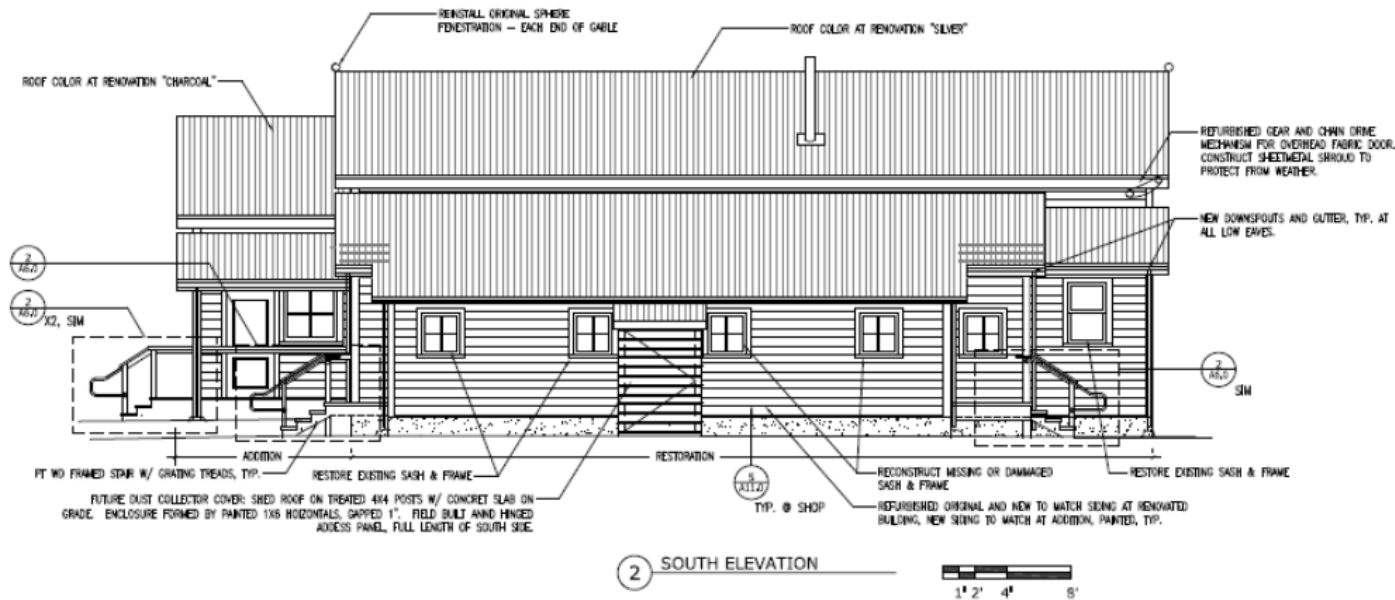
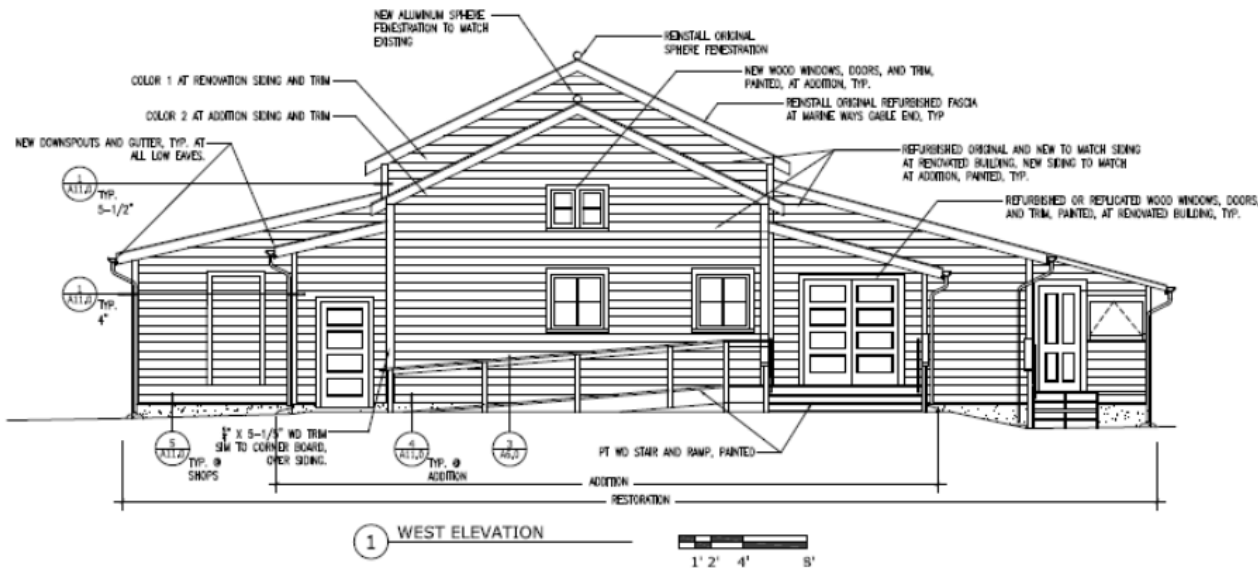
Project location map



Web GIS Map of 1490 Seward Ave.



Japonski Island Boathouse from the O'Connell Bridge (06/30/2019)





JAN 31 2011



NorthWind Architects LLC

109A 2ND ST.
JUNEAU, AK 99801
PH #907.586.6150
FX #907.586.6181
WWW.NORTHWINDARCH.COM

1" = 1'

IF THE ABOVE DIMENSION DOES NOT EQUAL EXACTLY 1", THIS DRAWING HAS BEEN ENLARGED OR REDUCED, AFFECTING ALL LABELLED SCALES

JAPONSKI ISLAND BOATHOUSE

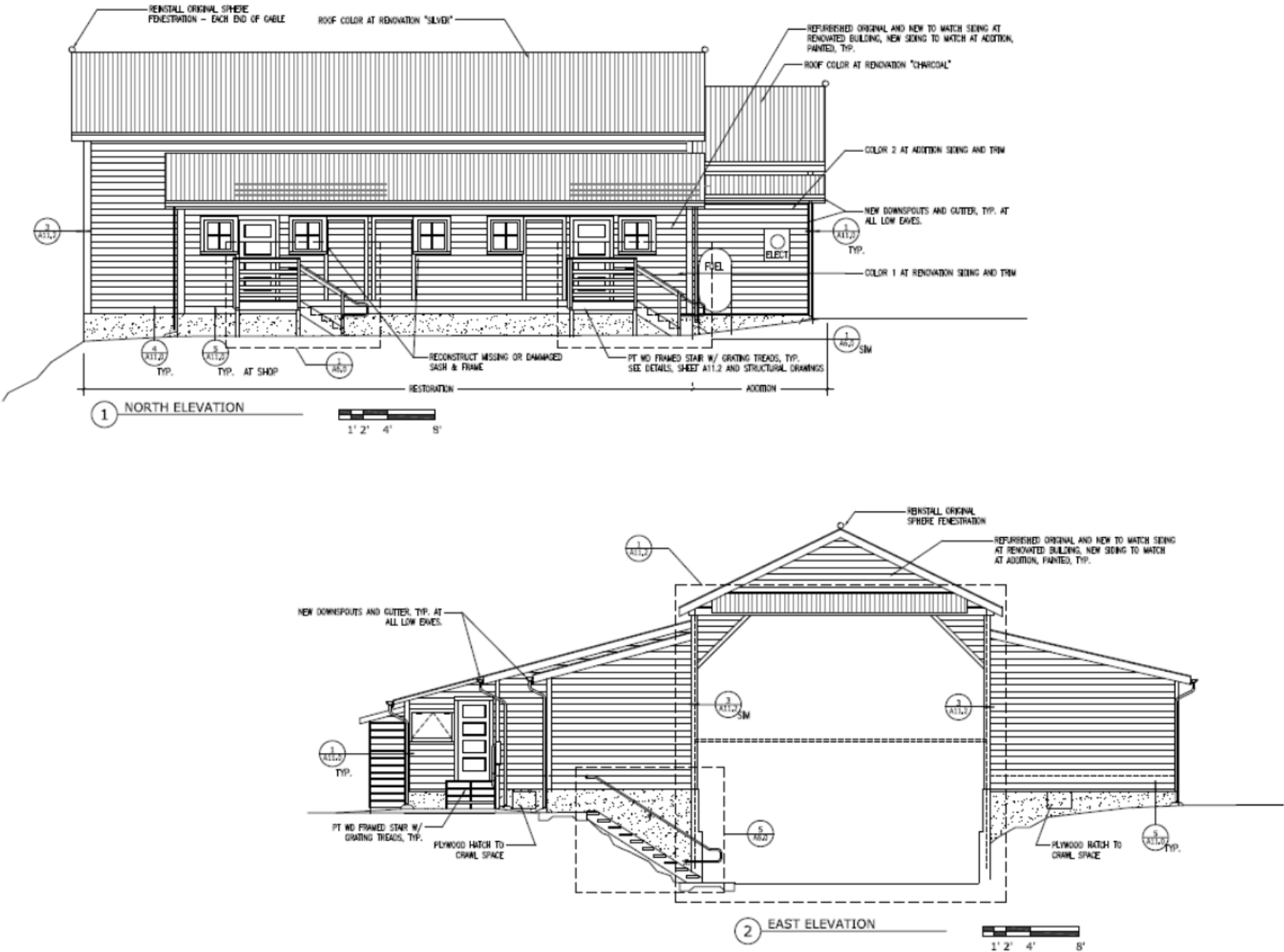
PHASE 1 ADAPTIVE RE-USE

SITKA MARITIME HERITAGE SOCIETY
SITKA, ALASKA

EXTERIOR ELEVATIONS

DATE	JAN. 31, 2011
DESIGNER	X
CHECKED BY	SB
DRAWN BY	SB

SCALE: A4.0



DOOR NUM	DOOR WIDTH	HEIGHT	THICK	DOOR MAT	TYPE	FIN	COL	FRAME MAT	TYPE	FIN	COL	SEALS HEAD	JAMB	THRESH	NOTES
01A	36"-36"	80"	1-3/4"	NO	B. EXST	PTD	4	NO	EXST	PTD	4	2/WH/1	2/WH/1	2/WH/1	1
01B	36"	80"	1-3/4"	NO	B. EXST	PTD	4	NO	EXST	PTD	4	2/WH/1	2/WH/1	2/WH/1	1
01C	36"	80"	1-3/4"	NO	B. NEW	PTD	4	NO	NEW	PTD	4	2/WH/1	2/WH/1	2/WH/1	2
01D	36"	80"	1-3/4"	NO	A. EXST	PTD	4	NO	EXST	PTD	4	2/WH/1	2/WH/1	2/WH/1	1
01E	36"-32"	80"	1-3/4"	NO	B. NEW	PTD	4	NO	NEW	PTD	4	2/WH/1	2/WH/1	2/WH/1	2
02A	36"	80"	1-3/4"	NO	B. NEW	PTD	4	NO	NEW	PTD	4	2/WH/1	2/WH/1	2/WH/1	4
02B	36"	80"	1-3/4"	NO	B. EXST	PTD	4	NO	NEW	PTD	4	2/WH/1	2/WH/1	2/WH/1	3
02C	36"	80"	1-3/4"	NO	B. NEW	PTD	4	NO	NEW	PTD	4	2/WH/1	2/WH/1	2/WH/1	4
04	36"	80"	1-3/4"	NO	B. EXST	PTD	4	A	EXST	PTD	A	2/WH/1	2/WH/1	NONE	1
05	24"-3"	22'-6"	-	PAVING	-	F	WHITE	NO	NEW	PTD	1	2/WH/2	2/WH/2	NONE	CHIMNEY PASSAGE DOOR
06A	36"	80"	1-3/4"	NO	C. NEW	PTD	3	NO	EXST	PTD	3	2/WH/2	2/WH/2	NONE	4
06B	36"	80"	1-3/4"	NO	C. NEW	PTD	3	NO	EXST	PTD	3	2/WH/2	2/WH/2	NONE	4
07	30"	36"	-	-	-	-	-	4	EXST	PTD	F	F	F	F	4. STEEL FLOOR PATCH
08	36"	80"	1-3/4"	NO	EXST	PTD	2	NO	EXST	PTD	2	2/WH/2	2/WH/2	NONE	4
09	36"	80"	1-3/4"	NO	EXST	PTD	3	NO	EXST	PTD	3	2/WH/2	2/WH/2	NONE	4
10	36"	80"	1-3/4"	NO	EXST	PTD	B	NO	EXST	PTD	B	2/WH/2	2/WH/2	NONE	4
11	36"	80"	1-3/4"	NO	EXST	PTD	4	NO	EXST	PTD	4	2/WH/2	2/WH/2	NONE	4

- DOOR AND FRAME FINISH LEGEND:
- COLOR #1 IS TO MATCH RENOVATION EXTERIOR SIDING COLOR.
COLOR #2 MATCH NEW ADDITION EXTERIOR SIDING COLOR.
COLOR #3 IS NEW ENTRY DOOR FINISH.
COLOR #4 IS TO MATCH RENOVATION TRIM COLOR.
COLOR #5 IS TO MATCH NEW ADDITION TRIM COLOR.
- F = FACTORY FINISH
WD = WOOD
EXT = EXISTING
PTD = PAINTED

Figure 1 consists of three diagrams labeled A, B + B-PR, and C, illustrating different window configurations for a wall. Each diagram shows a wall of height H and width W , with a window unit of height h and width w . The window unit is labeled "INSULATED & TEMPERED GLASS".

- Diagram A:** Shows a wall with a single window unit. The window unit is centered horizontally and vertically within the wall. The wall has a thickness t and the window unit has a thickness t_w .
- Diagram B + B-PR:** Shows a wall with a window unit and a separate panel. The window unit is on the right, and the panel is on the left. The panel has a height h and width w . The wall has a thickness t and the window unit has a thickness t_w .
- Diagram C:** Shows a wall with a window unit and a separate panel. The window unit is on the right, and the panel is on the left. The panel has a height h and width w . The wall has a thickness t and the window unit has a thickness t_w .

Diagram D: A vertical window with a single pane. Dimensions: width 2'-5", height 3'-8 5/8". Description: RESTORE ORIGINAL.

Diagram E: A vertical window with a four-pane grid. Dimensions: width 2'-4", height 2'-8". Description: RESTORE ORIGINAL. DUPLICATE ORIGINAL WHERE MISSING.

Diagram F: A horizontal window with a single pane and a dashed diagonal line indicating a latch. Dimensions: width 3'-4", height 2'-2". Description: FINISH PLYWOOD PANEL WITH LATCH & FINISH OPENING.

Diagram G: A vertical window with a four-pane grid. Dimensions: width 3'-4", height 3'-6". Description: NEW WOOD WINDOW. INSULATED GLASS. TEMPERED GLASS PER CODE.

Diagram H: A vertical window with two side-by-side panes. Dimensions: width 3'-4", height 2'-5". Description: NEW WOOD WINDOW.

NO	NAME	FLOOR	WAT	FIN	COL	BASE	WAT	FIN	COL	WALLS	WAT	FIN	COL	WAT	FIN	COL	HT	REMARKS
01	SHED	ND	-	-	-	ND	PTD	A	-	ND	PTD	A	-	ND	PTD	1	8'-12"	1, 5
02	CHIMNEY/SHED	ND	-	-	-	ND	PTD	A	-	ND	PTD	A	-	ND	PTD	1	8'-12"	1, 5
03	CHIMNEY/OFFICE	ND	-	-	-	ND	PTD	A	-	ND	PTD	A	-	ND	PTD	1	8'-12"	1, 5
04	EQUIPMENT	ND	-	-	-	RD	F	-	-	ONB	PTD	B	-	ONB	PTD	B	8'-12"	4, 5
05	MARINE WAYS	CONC	-	-	-	CONC	PTD	B	-	ND	-	-	-	ND	-	-	4'24"	1, 5
06	ENTRY	RS	-	-	-	RS	F	-	-	ONB	PTD	B	-	ND	PTD	B	8'-12"	3, 4, 5
07	HATCH/GRANULARSPACE	CONC	-	-	-	-	-	-	-	GR	PTD	B	-	ND	PTD	B	8'-12"	4, 5
08	SPRINKLER	CT	-	-	-	-	-	-	-	ONB	PTD	B	-	ONB	PTD	B	8'-12"	4, 5
09	TUNNEL	CT	-	-	-	CT	F	-	-	ONB	PTD	B	-	ONB	PTD	B	8'-12"	2, 4, 5
10	JANITOR	RS	-	-	-	RS	F	-	-	ONB	PTD	B	-	ONB	PTD	B	8'-12"	4, 5
11	UTILITY	RS	-	-	-	RS	F	-	-	ONB	PTD	B	-	ONB	PTD	B	8'-12"	4, 5

- DOOR AND FRAME FINISH LEGEND:
- COLOR A IS TO MATCH EXISTING SHOP WALL AND CEILING FINISHES
COLOR B IS TO BE NEW ADDITION INTERIOR WALL AND CEILING FINISHES
COLOR C IS TO BE ADJACENT ROOF COLOR.
CB = CEMENT BOARD
CT = CERAMIC TILE
CONC = CONCRETE WITH CLEAR SEALER
WD = WOOD
RIB = RUBBER
PTD = PAINTED

[illegible]

A12.0



West view of the boathouse with new entry addition. Addition is covered and tar paper and has only rough openings for windows and doors. (06/24/2019)



West view with new entry addition. (06/24/2019)



Northeast wall of the Northeast wing. (06/24/2019)



Northeast wall of the Northeast wing. (06/24/2019)



Detail of original window design—
diagonal stops allow the sash to be tilted
inward without the use of hinges.
(07/01/2019)



Detail of Northeast wall (06/24/2019)



Detail of Northeast wall (06/24/2019)



Detail of Northeast wall (06/24/2019)



Detail of weathering on Northeast wall
(07/01/2019)



Detail of weathering on Northeast wall
(07/01/2019)



Detail of weathering and damage on Northeast wall
(07/01/2019)



Detail of weathering on Northeast wall
and studs (07/01/2019)