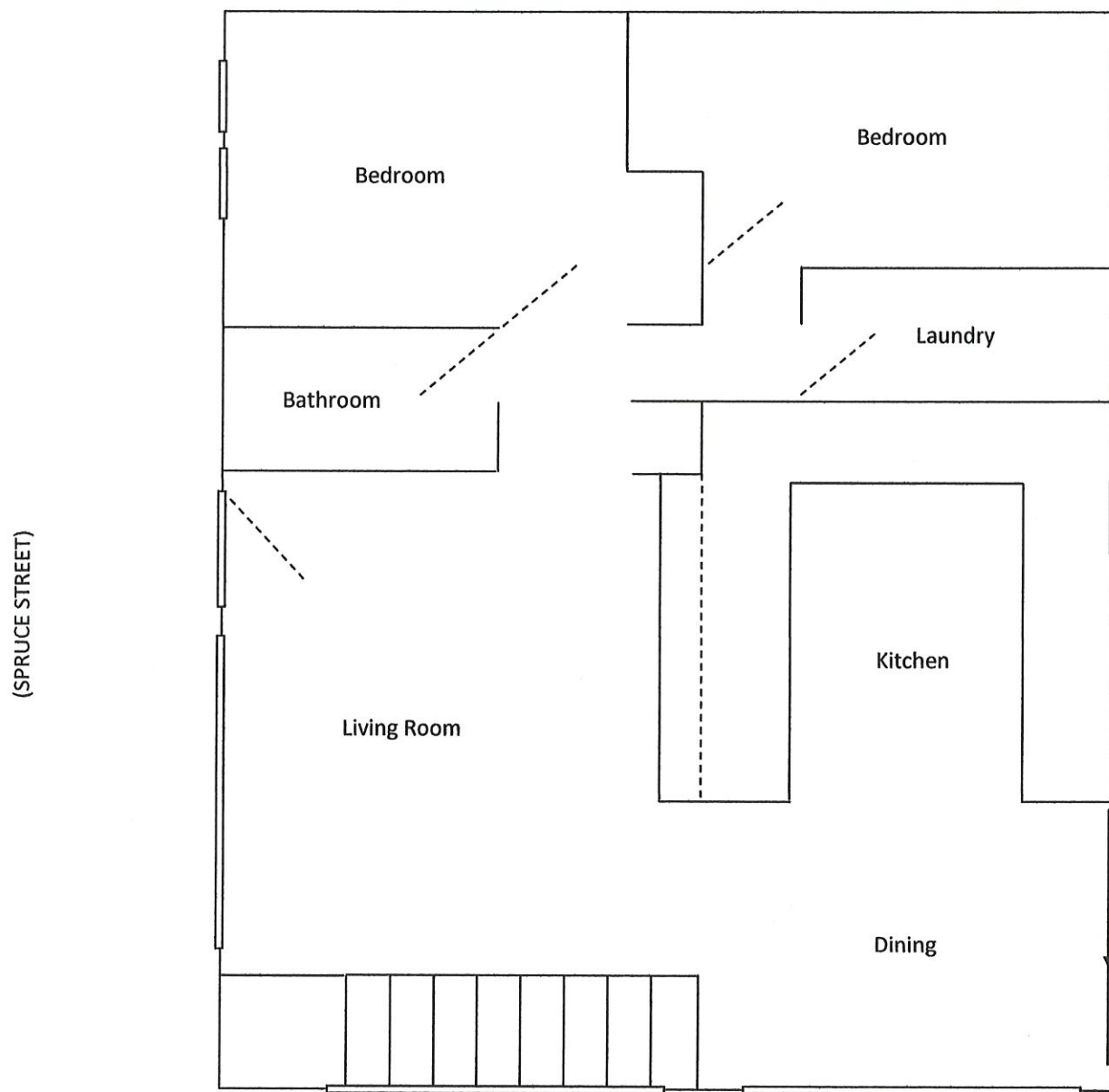


400 SPRUCE STREET—UPSTAIRS



(ERLER STREET)

Renter Information

Directions:

Property is located at 400 Spruce Street. Rental unit has private parking and entrance, which is accessed from Erler Street (backyard of main residence). The parking space is reserved for guests, and can accommodate two vehicles.

Garbage:

Rental unit has separate utilities. Private garbage located just outside rental unit. Owners will put out garbage can for pickup every Thursday.