



CITY AND BOROUGH OF SITKA

Meeting Agenda - Final

Planning Commission

Wednesday, October 20, 2021

6:30 PM

Harrigan Centennial Hall

****Special Meeting****

I. CALL TO ORDER AND ROLL CALL

II. CONSIDERATION OF THE AGENDA

III. PERSONS TO BE HEARD

(Public participation on any item off the agenda. All public testimony is not to exceed 3 minutes for any individual, unless the Chair imposes other time constraints at the beginning of the agenda item.)

IV. THE EVENING BUSINESS

A [MISC 21-09](#) Discussion/Direction on Short-Term Tourism Plan

Attachments: [Staff Memo](#)

[Downtown Traffic Analysis & Options](#)

[2022 Cruise Calendar](#)

Commission will review downtown traffic analysis and options.

V. ADJOURNMENT

NOTE: More information on these agenda items can be found at <https://sitka.legistar.com/Calendar.aspx> or by contacting the Planning Office at 100 Lincoln Street. Individuals having concerns or comments on any item are encouraged to provide written comments to the Planning Office or make comments at the Planning Commission meeting. Written comments may be dropped off at the Planning Office in City Hall, emailed to planning@cityofsitka.org, or faxed to (907) 747-6138. Those with questions may call (907) 747-1814.

Publish: October 15, 19



City and Borough of Sitka

PROVIDING FOR TODAY...PREPARING FOR TOMORROW

Coast Guard City, USA

MEMORANDUM

To: Chair Spivey and Planning Commission Members

From: Amy Ainslie, Planning Director

Date: October 13, 2021

Subject: **Tourism Planning – Downtown Traffic & Congestion Mitigation**

Based on our discussion of Downtown Traffic & Congestion Mitigation that took place on 9/15, staff has completed analysis and recommendations on a few options. The attached presentation walks through the options considered, analysis, and recommendations. As an additional resource, the updated 2022 Cruise Calendar has also been included.

The main decisions to be made are whether street closures/rerouting should be included as plan recommendations, the specific configuration, and the closure/rerouting schedule for the season. Ideally, if the Commission feels it has enough information and input to make these decisions on 10/20, we will move forward with finalizing those decisions as plan recommendations. However, if the decision cannot yet be made, we will discuss what further information or input is desired and schedule a future additional meeting to finalize.

Additionally, from the 10/15 meeting, the following suggestions/recommendations continue to be pursued and will likely become plan recommendations:

1. Pursue traffic controllers/traffic cops for strained intersections
2. Explore option to add dedicated left turn lane for Lake to Lincoln traffic with ADOT
3. Advocate for a system-wide traffic study by ADOT
4. Optimize parking in downtown as much as possible (including enforcement) and look for opportunities to designate additional parking
5. Explore options for park and ride system for downtown workers
6. Fill gaps in signage/wayfinding needs



SHORT-TERM TOURISM PLAN

Staff Analysis for Lincoln Street Traffic & Congestion Mitigation

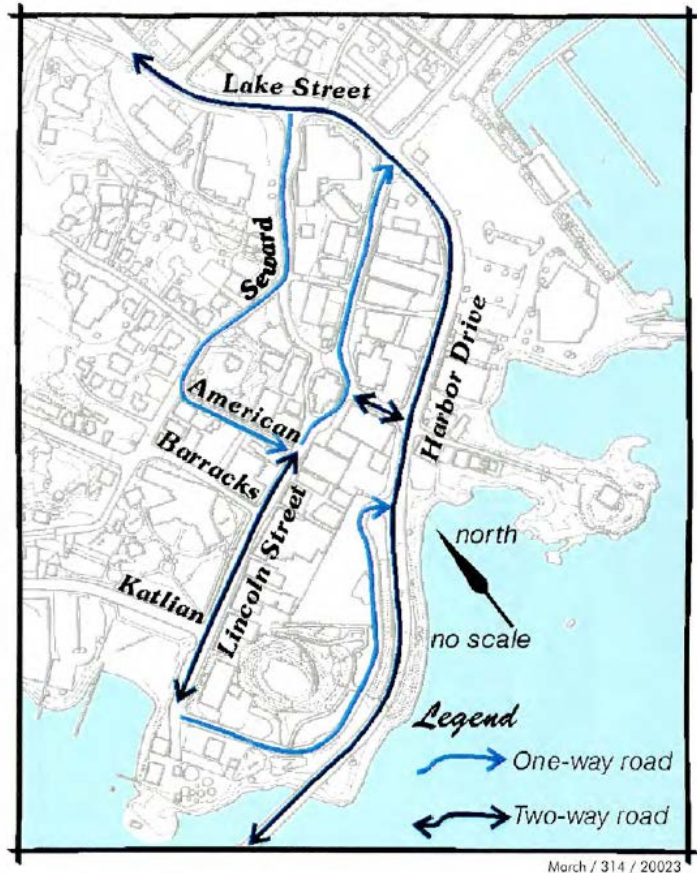
October 20, 2021

OVERVIEW

- 9/15 meeting focused on downtown traffic & congestion mitigation
- Staff was asked to review Lincoln Street closure options and bring back analysis
 - Studied and not recommended
 - Studied and recommended
- Commonality between all presented options:
 - All options have full or partial street/lane closures to accommodate more pedestrian space
 - Katlian Ave. traffic has an outlet on Lincoln Street end (some options allow both left and right turn or only right turn). This also leaves an outlet for Harbor Drive traffic
 - Review and analysis completed by Planning, PW, SFD, & SPD

STUDIED OPTIONS – NOT RECOMMENDED

GATEWAY PLAN OPTION 1



Pros

- Maintains vehicular access to downtown amenities
- Could maintain downtown parking

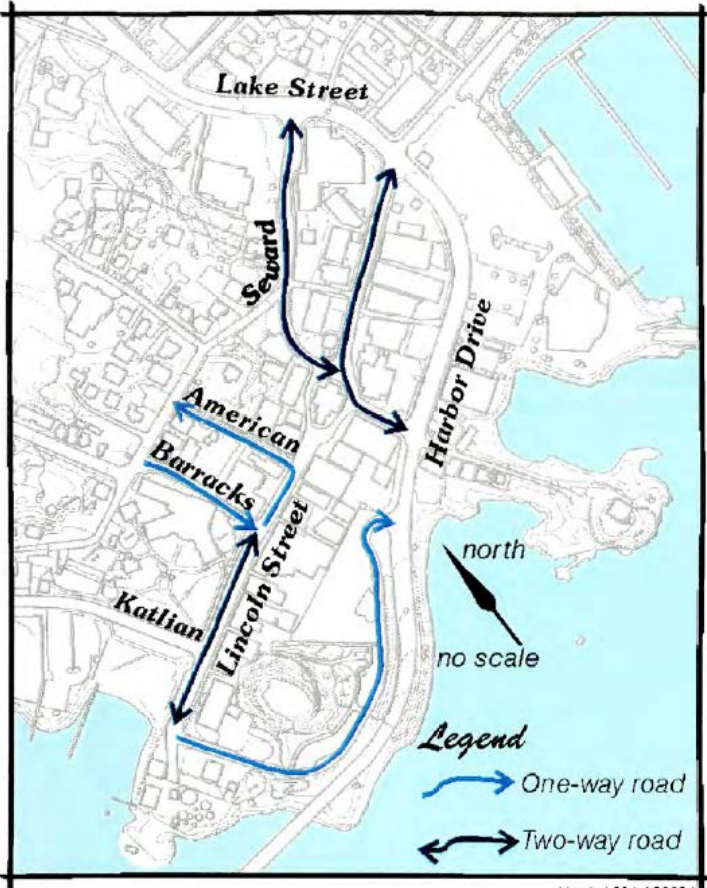
Cons

- Funnels traffic to substandard routes (Seward & American)
- Does not make optimal use of Harbor Drive
- Does not create more space for pedestrians on the West end of Lincoln Street where more space is needed
- Would be confusing as a temporary solution (i.e. if not in place consistently day-to-day during the season)

Lincoln Street is two-way between Katlian and American; it becomes a one-way from American to Harbor Drive for east-bound traffic. West-bound traffic enters Lincoln via Seward and American streets. To make more room for wider sidewalks, on street parking is removed from one side of Lincoln and accommodated in the Castle Hill lot.

STUDIED OPTIONS – NOT RECOMMENDED

GATEWAY PLAN OPTION 2



March / 314 / 20024

There is 2-way traffic on Lincoln Street between Katlian and Barracks; American becomes one-way going north and Barracks becomes one-way going south. Lincoln is closed around St. Michael's except on the southeast side.

Pros

- Maintains vehicular access to downtown amenities
- Could maintain downtown parking
- Removes traffic from in front of St. Michael's

Cons

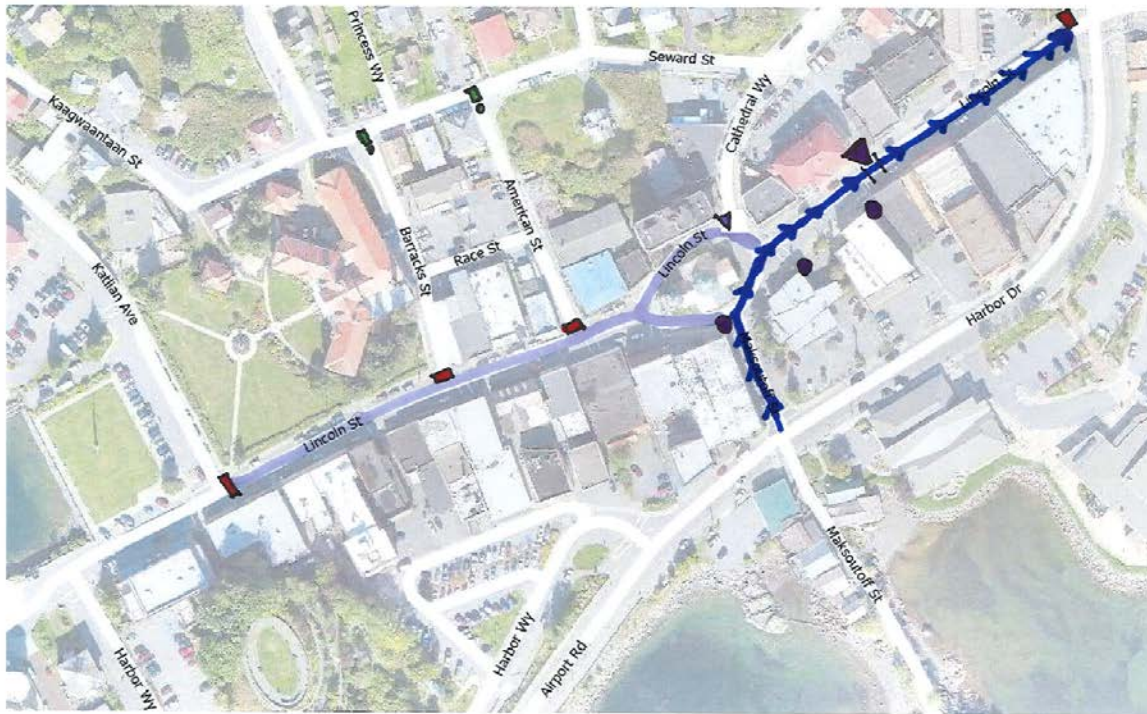
- Funnels traffic to substandard routes (Seward & Cathedral, American & Barracks). Cathedral Way lacks adequate width to be 2 way without major redesign/loss of parking
- Does not make optimal use of Harbor Drive
- Does not create more space for pedestrians on the West end of Lincoln Street where more space is needed
- Would be confusing as a temporary solution (i.e. if not in place consistently day-to-day during the season)

STUDIED OPTIONS – NOT RECOMMENDED

MODIFIED GATEWAY OPTIONS 1 & 2

- Pedestrian Only
- One Way Street
- || Vehicle Crossing Designation
- No Left Turn Sign
- ▲ No Right Turn Sign
- No Entry Sign/Barricade
- No Outlet Sign

PARTIAL CLOSURE OPTION



Pros

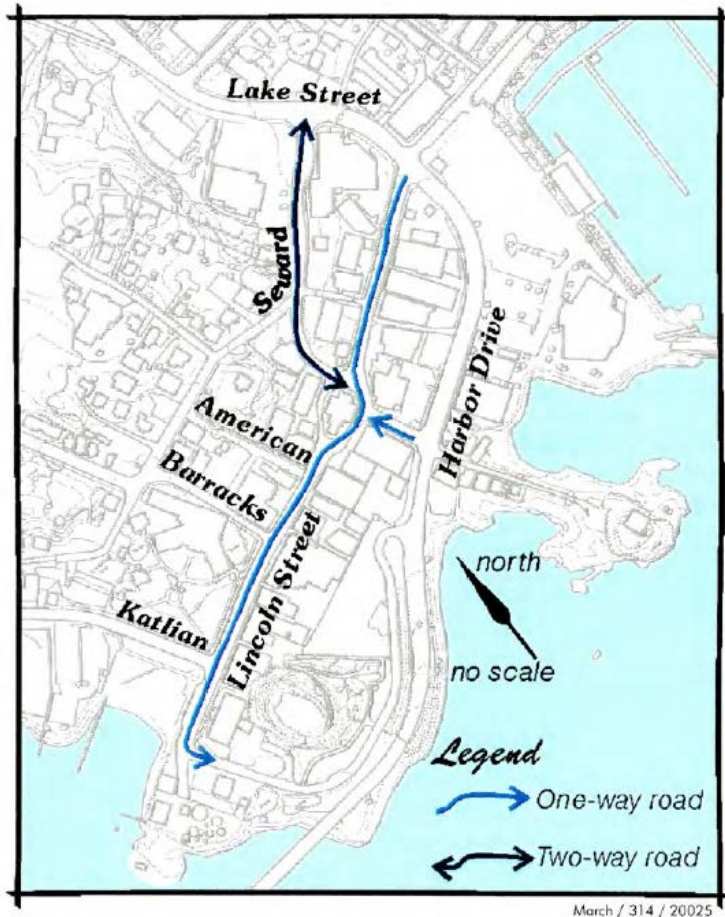
- Maintains vehicular access to banks
- Could maintain some downtown parking
- Opens pedestrian space on west end of Lincoln Street

Cons

- Adds "left turn" traffic to Lake/Lincoln intersection
- Signage/barricades for this route likely to be confusing, particularly if not in place all summer
- Intensive to mobilize & demobilize regularly

STUDIED OPTIONS – NOT RECOMMENDED

GATEWAY PLAN OPTION 3



Pros

- Maintains vehicular access to downtown amenities
- Could maintain some downtown parking

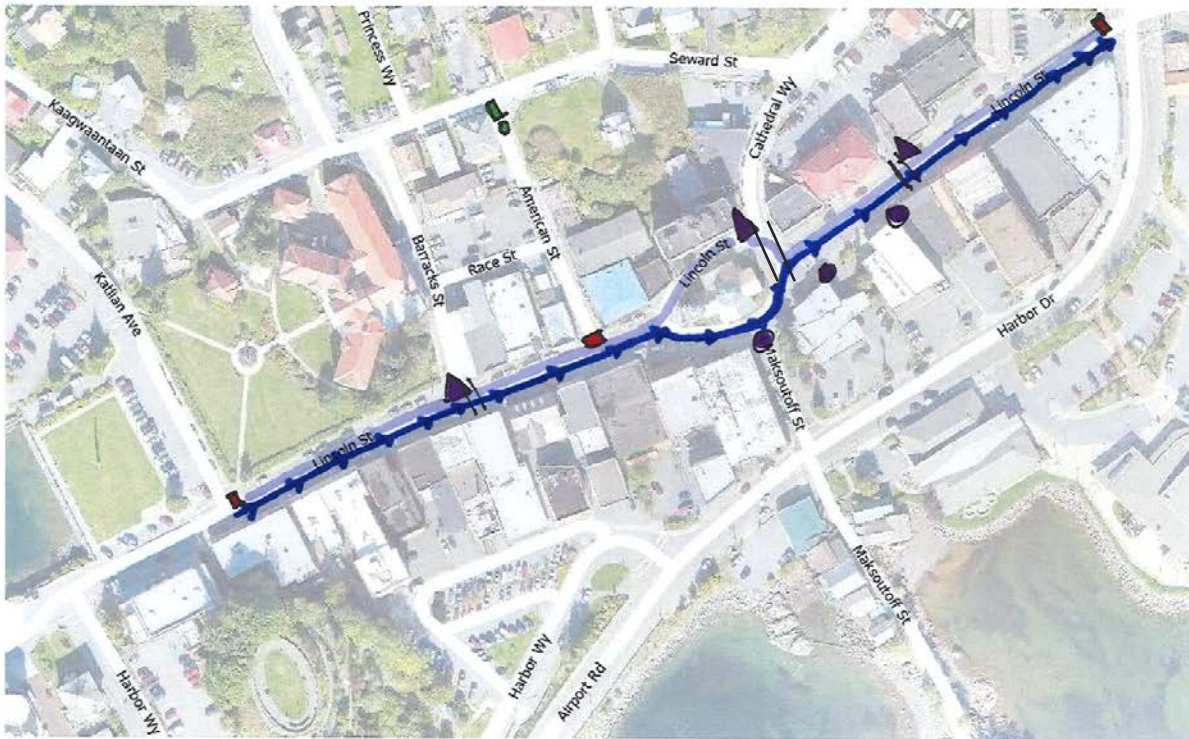
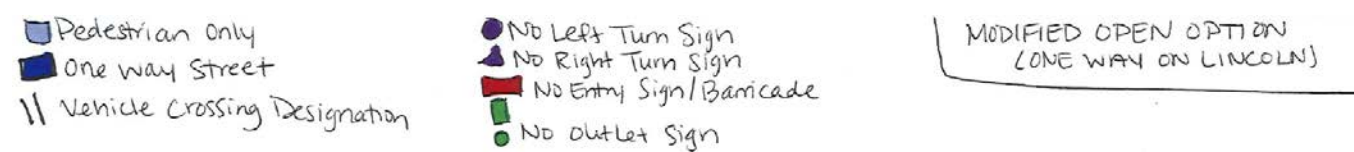
Cons

- Funnels traffic to substandard routes (Seward & Cathedral). Cathedral Way lacks adequate width to be 2 way without major redesign/loss of parking
- Does not work well as a temporary (rather than built) solution. Traffic would have to cross lanes and go “wrong way” around the church.
- In order to keep Cathedral, American, and Barracks open, traffic would have to cross pedestrian spaces (exacerbates bottlenecks at these intersections)

Lincoln Street is one-way, running from east to west. All traffic flows around the south side of St. Michael's, leaving room for pedestrians on the north.

STUDIED OPTIONS – NOT RECOMMENDED

MODIFIED GATEWAY OPTION 3



Pros

- Maintains vehicular access on bank & pharmacy side of street
- Maintains some downtown parking
- Opens pedestrian/amenity/vending space in west bound lane

Cons

- Adds left turn traffic at Lake/Lincoln intersection
- More streets (Cathedral, American, Barracks) either need to be closed or will have to cut across pedestrian space

GOALS & LEVELS OF SERVICE FOR RECOMMENDED OPTIONS

- General goals, principles, and considerations for recommended options:
 - Safety
 - Traffic efficiency (particularly at Lake/Lincoln intersection)
 - Balancing pedestrian and vehicular access for downtown businesses/entities/amenities
 - Bank access & drive-thrus
 - Church access & parking
 - The Ride
- The Journal of Engineering Research and Studies provides standard measures for sidewalk "Level of Service" calculated for recommended options

Table-1: Sidewalk Level of Service Classification

Sidewalk Level of Service	Characteristics of Sidewalk
LOS A	Pedestrian Space > 60 ft ² /p, Flow Rate = 5 p/min/ft, pedestrians move in desired paths without altering their movements in response to other pedestrians. Walking speeds are freely selected, and conflicts between pedestrians are unlikely.
LOS B	Pedestrian Space > 40-60 ft ² /p, Flow Rate > 5-7 p/min/ft, there is sufficient area for pedestrians to select walking speeds freely to bypass other pedestrians, and to avoid crossing conflicts. At this level, pedestrians begin to be aware of other pedestrians, and to respond to their presence when electing a walking path.
LOS C	Pedestrian Space > 24-40 ft ² /p, Flow Rate > 7-10 p/min/ft, space is sufficient for normal walking speeds, and for bypassing other pedestrians in primarily unidirectional streams. Reverse-direction or crossing movements can cause minor conflicts, and speeds and flow rate are somewhat lower.
LOS D	Pedestrian Space > 15-24 ft ² /p, Flow Rate > 10-15 p/min/ft, freedom to select individual walking speed and to bypass other pedestrians is restricted. Crossing or reverse-flow movements face a high probability of conflict, requiring frequent changes in speed and position. The LOS provides reasonably fluid flow, but friction and interaction between pedestrians is likely
LOSE	Pedestrian Space > 8-15 ft ² /p, Flow Rate > 15-23 p/min/ft, virtually all pedestrians restrict their normal walking speed, frequently adjusting their gait. At the lower range, forward movement is possible only by shuffling. Space is not sufficient for passing slower pedestrians. Cross- or reverse-flow movements are possible only with extreme difficulties. Design volumes approach the limit of walkway capacity, with stoppages and interruptions to flow.
LOS F	Pedestrian Space = 8 ft ² /p, Flow Rate varies p/min/ft, all walking speeds are severely restricted, and forward progress is made only by shuffling. There is frequent unavoidable contact with other pedestrians. Cross-and reverse-flow movements are virtually impossible. Flow is sporadic and unstable. Space is more characteristic of queued pedestrians than of moving pedestrian streams.

Pedestrian LOS for sidewalks and sideways is speed (ft/s), and the volume-to-capacity (v/c) calculated using the pedestrian unit flow rate. ratio can also be derived from the Table-2.

In addition to LOS grades A to F, space (ft²/p),

Table-2: PLOS Criteria (HCM 2000)

LOS	Space (ft ² /ped.)	Flow Rate (Ped./min/ft)	Speed (ft/sec)	V/C Ratio
A	>60	≤5	>4.25	≤0.21
B	>40-60	>5-7	>4.17-4.25	>0.21-0.31
C	>24-40	>7-10	>4.00-4.17	>0.31-0.44
D	>15-24	>10-15	>3.75-4.00	>0.44-0.65
E	>8-15	>15-23	>2.50-3.75	>0.65-1.00
F	≥8	Variable	≤2.50	Variable

OPTION A: FULL CLOSURE OPTION

Description

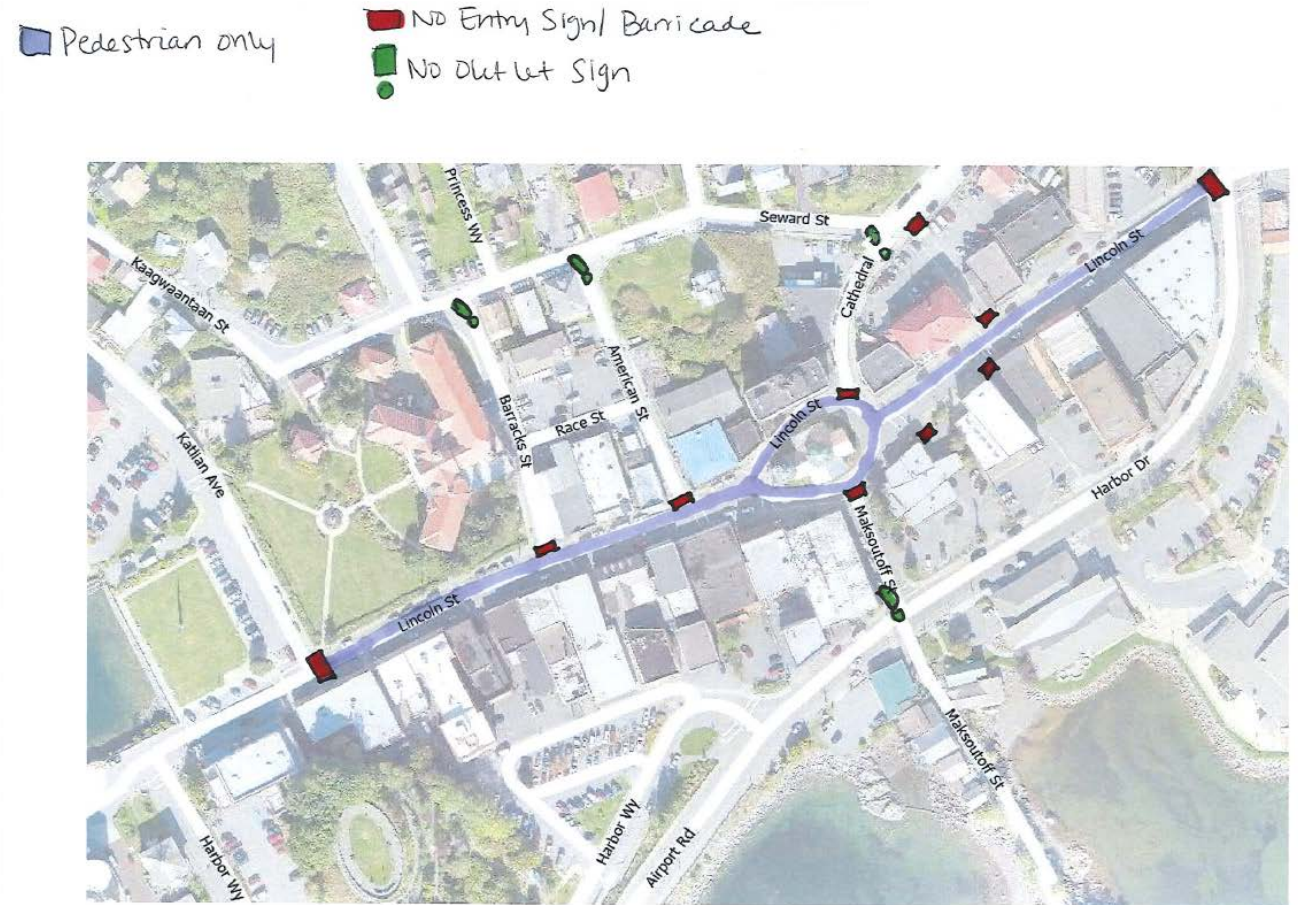
- Lincoln Street is closed to vehicles from the Lake/Lincoln Intersection to the Lincoln/Katlian Intersection
- Feeder routes (Barracks, American, Maksoutoff, Cathedral, and other unnamed alleys) blocked from entry
- Closures could be on a consistent schedule (M-F) or based on daily passenger count

Pros

- Allows maximum pedestrian space and clearly separates pedestrians from vehicles
- Opens maximum spaces for amenities (benches, water stations, garbage cans, potentially vending, etc.)

Cons

- Maximum loss of parking
- Maximum impact on vehicular access to locally-demanded services (primarily pharmacy and banks including drive-thrus)
- Complicates Pioneer Home emergency access
- Necessitates new downtown stop for The Ride
- Congestion remains around Totem Square/end of Lincoln



OPTION B: MODIFIED OPEN OPTION

Description

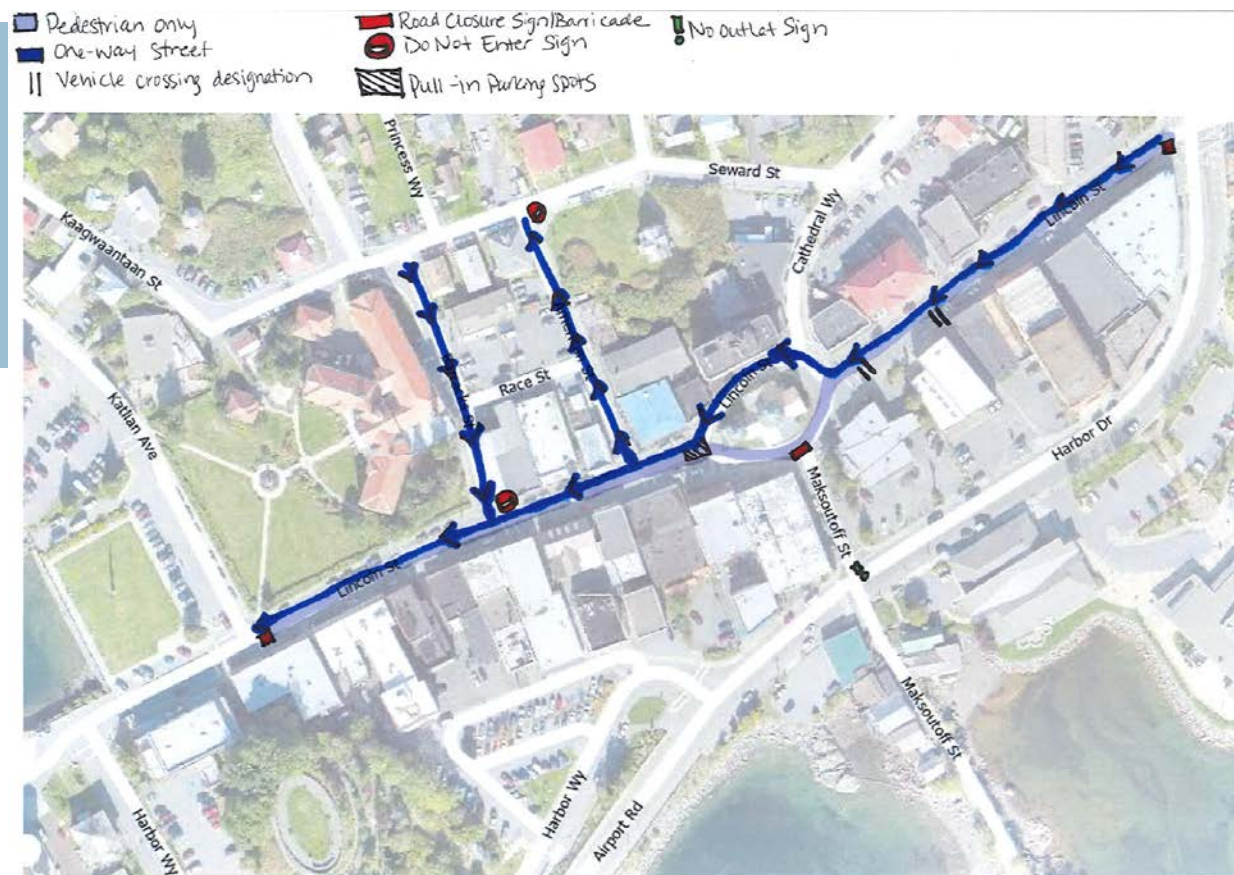
- All of Lincoln Street remains open to vehicular traffic, but is only one-way heading west from Lake intersection to Katlian intersection
- Pedestrians, amenities, and vending can take place in the 'east bound' traffic and parking lanes
- "Vehicle crossing designations" available at bank drive thrus
- A temporary median would be needed to separate pedestrians and vehicles (see example photos). In place all season.
- Pull-in parking spaces designated near churches

Pros

- Allows more normal flow and access to Lincoln Street while reducing pedestrian and vehicle conflict
- Maintains vehicular access to downtown amenities & use of bank drive-thrus
- Lower loss of parking
- Provides for better emergency access to Pioneer Home
- Possible reduction in jaywalking due to median barriers

Cons

- Less space opened for pedestrians and other amenities
- Vehicles and pedestrians still intermingled to some degree
- Necessitates new downtown stop for The Ride
- Congestion remains around Totem Square/end of Lincoln



OPTION C: HYBRID OPTION

Description

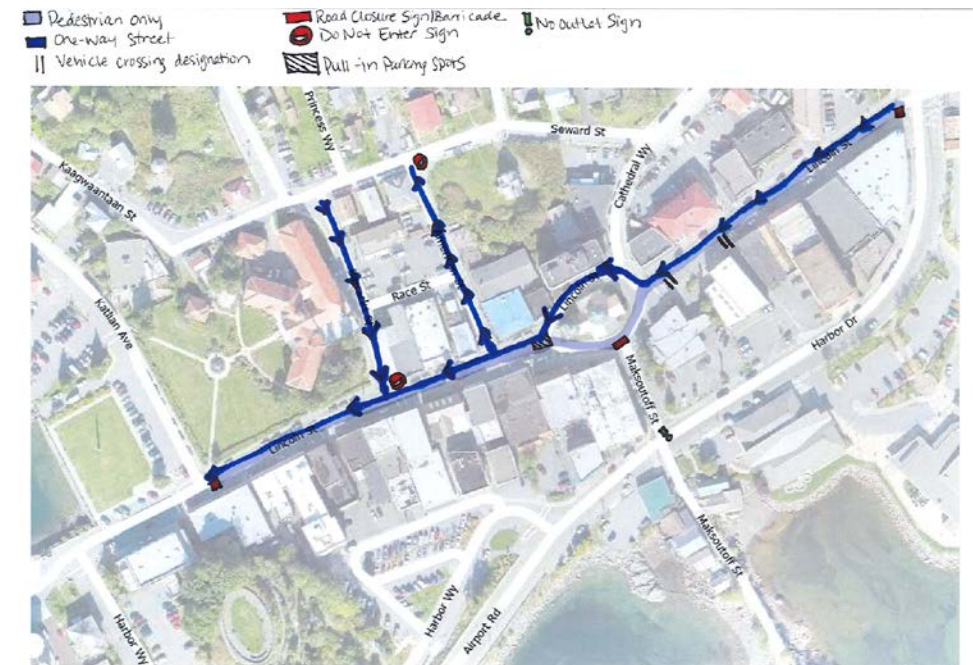
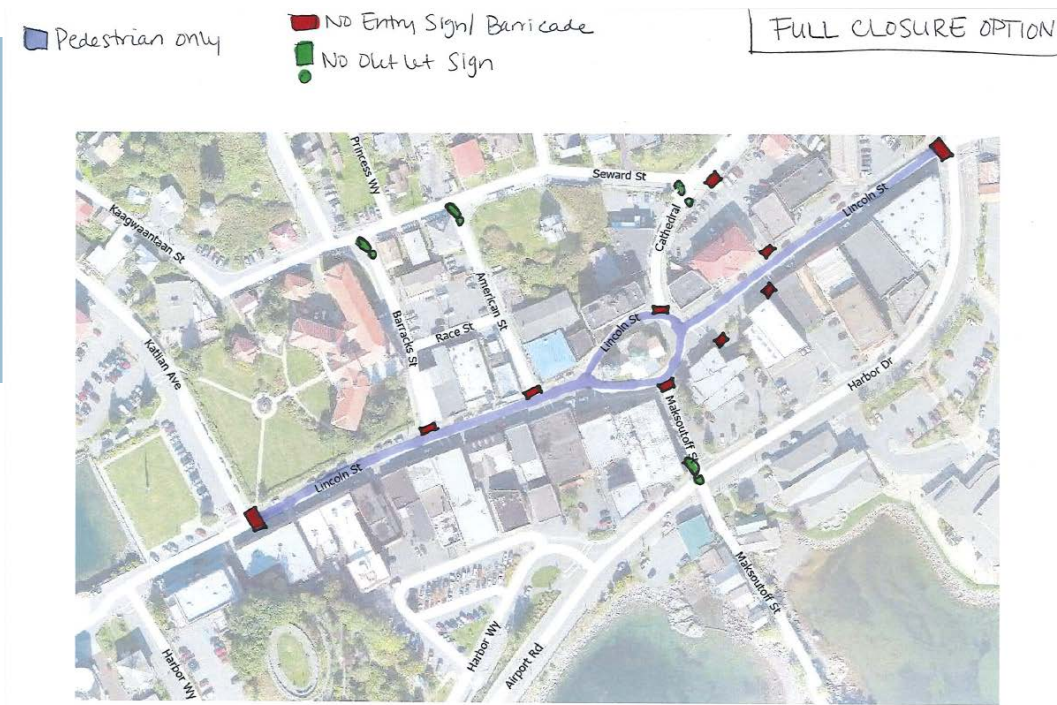
- Lincoln closed when needed (Option A), but staged to re-open as Option B
- All amenities/potential vending staged in east bound lane, even when road is fully closed.

Pros

- Facilitates full closure when needed with less frequent set-up and take-down of amenities and potential vending
- Could more flexibly accommodate both moderate and high passenger count days

Cons

- Comes with both the pros and cons of Options A and B when in place
- More labor-intensive than Option B alone



LEVEL OF SERVICE ANALYSIS FOR RECOMMENDED OPTIONS

Assumptions	
Driving Lane Width (x2)	12
Parking Lane Width (x2)	8
Sidewalk Width (x2)	5
Length of Street	1300
Total Square Footage	65000

			SF per Ped. (min. at each LOS) & # of Ped. Supported						
			Ped. SF Available	LOS A	LOS B	LOS C	LOS D	LOS E	LOS F
				61	41	25	16	9	8
Option A	No closures, sidewalk space only	13000	213	317	520	813	1,444	1,625	
	All driving lanes & parking lanes closed	65000	1,066	1,585	2,600	4,063	7,222	8,125	
Option B	1 driving lane closed	49400	810	1,205	1,976	3,088	5,489	6,175	
	1 driving lane + one parking lane closed	39000	639	951	1,560	2,438	4,333	4,875	

Table-1: Sidewalk Level of Service Classification

Sidewalk Level of Service	Characteristics of Sidewalk
LOS A	Pedestrian Space > 60 ft ² /p. Flow Rate = 5 p/min/ft. pedestrians move in desired paths without altering their movements in response to other pedestrians. Walking speeds are freely selected, and conflicts between pedestrians are unlikely.
LOS B	Pedestrian Space > 40-60 ft ² /p. Flow Rate > 5-7 p/min/ft. there is sufficient area for pedestrians to select walking speeds freely to bypass other pedestrians, and to avoid crossing conflicts. At this level, pedestrians begin to be aware of other pedestrians, and to respond to their presence when electing a walking path.
LOS C	Pedestrian Space > 24-40 ft ² /p. Flow Rate > 7-10 p/min/ft. space is sufficient for normal walking speeds, and for bypassing other pedestrians in primarily unidirectional streams. Reverse-direction or crossing movements can cause minor conflicts, and speeds and flow rate are somewhat lower.
LOS D	Pedestrian Space > 15-24 ft ² /p. Flow Rate > 10-15 p/min/ft. freedom to select individual walking speed and to bypass other pedestrians is restricted. Crossing or reverse-flow movements face a high probability of conflict, requiring frequent changes in speed and position. The LOS provides reasonably fluid flow, but friction and interaction between pedestrians is likely.
LOS E	Pedestrian Space > 8-15 ft ² /p. Flow Rate > 15-23 p/min/ft. virtually all pedestrians restrict their normal walking speed, frequently adjusting their gait. At the lower range, forward movement is possible only by shuffling. Space is not sufficient for passing slower pedestrians. Cross- or reverse-flow movements are possible only with extreme difficulties. Design volumes approach the limit of walkway capacity, with stoppages and interruptions to flow.
LOS F	Pedestrian Space = 8 ft ² /p. Flow Rate varies p/min/ft. all walking speeds are severely restricted, and forward progress is made only by shuffling. There is frequent unavoidable contact with other pedestrians. Cross-and reverse-flow movements are virtually impossible. Flow is sporadic and unstable. Space is more characteristic of queued pedestrians than of moving pedestrian streams.

Pedestrian LOS for sidewalks and sideways is speed (ft/s), and the volume-to-capacity (v/c) calculated using the pedestrian unit flow rate. ratio can also be derived from the Table-2.

In addition to LOS grades A to F, space (ft²/p).

Table-2: PLOS Criteria (HCM 2000)

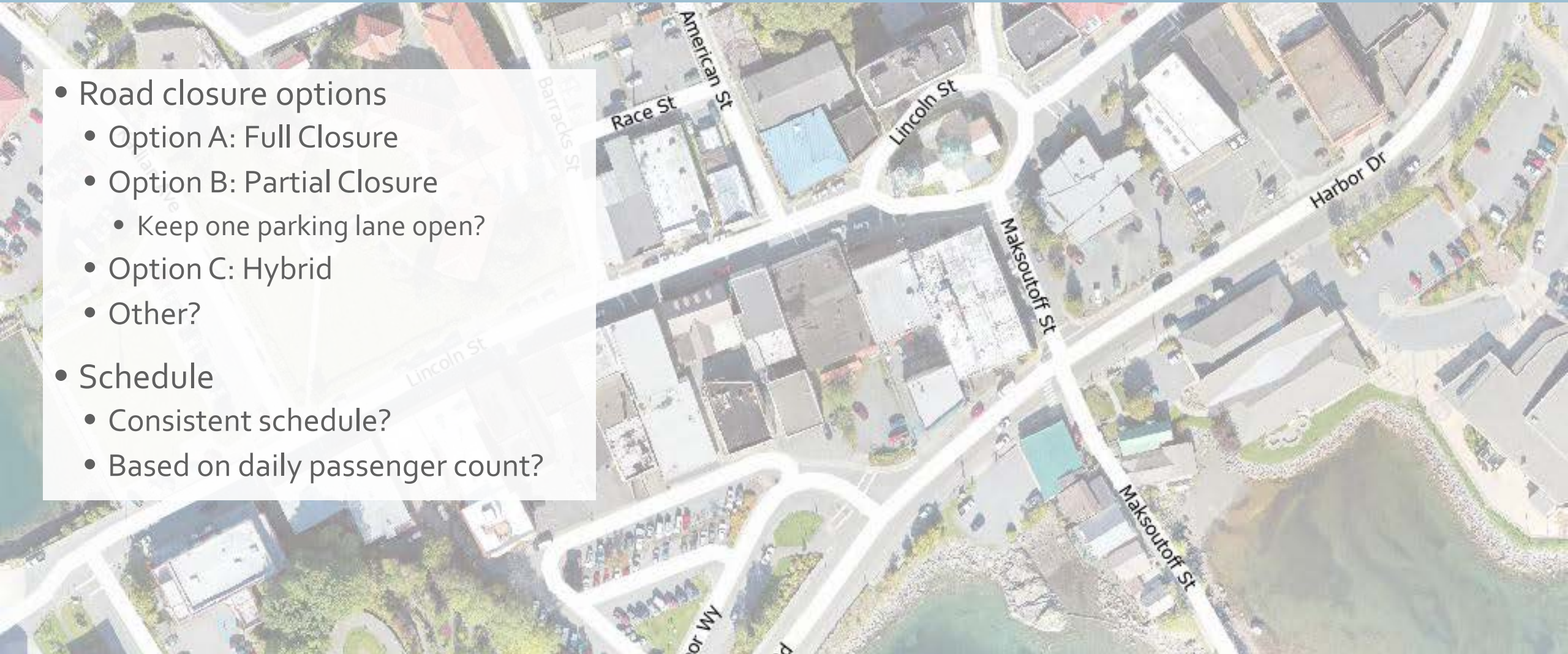
LOS	Space (ft ² /ped.)	Flow Rate (Ped./min/ft)	Speed (ft/sec)	V/C Ratio
A	>60	≤5	>4.25	≤0.21
B	>40-60	>5-7	>4.17-4.25	>0.21-0.31
C	>24-40	>7-10	>4.00-4.17	>0.31-0.44
D	>15-24	>10-15	>3.75-4.00	>0.44-0.65
E	>8-15	>15-23	>2.50-3.75	>0.65-1.00
F	≥8	Variable	≤2.50	Variable

COMPARISON MATRIX

Factors	Option A	Option B
Pedestrian Safety & Visitor Experience	Maximum pedestrian & amenity space Best separation of vehicles & pedestrians	Moderate pedestrian & amenity space Some intermingling of vehicles & pedestrians
Parking Impact	Highest impact on parking	Moderate impact on parking
Inconvenience Factor	Highest impact on access to downtown retail/services	Moderate impact on access to downtown retail/services
Other Considerations	Labor intensive to set-up and take down daily/weekly	Needs most equipment (temporary medians/fencing) Needs to stay in place full season – too labor intensive to demobilize regularly

DECISION POINTS

- Road closure options
 - Option A: Full Closure
 - Option B: Partial Closure
 - Keep one parking lane open?
 - Option C: Hybrid
 - Other?
- Schedule
 - Consistent schedule?
 - Based on daily passenger count?



	0 passengers	30	18%
	1-999 passengers	31	18%
	1000 - 2999 passengers	41	24%
	3000 - 5999 passengers	39	23%
	6000 - 8000+ passengers	27	16%

Cruise Line Agencies of Alaska

Cruise Ship Calendar for 2022

FOR PORT(S) = SIT AND SHIP(S) = ALL AND VOYAGES = ALL

Sunday, April 24	Monday, April 25	Tuesday, April 26	Wednesday, April 27	Thursday, April 28 SIT SEVEN SEAS MARINER 09:00 - 18:00	Friday, April 29	Saturday, April 30
0	0	0	0	735	0	0
Sunday, May 1	Monday, May 2 SIT RADIANCE OF THE SEA 08:00 - 17:00	Tuesday, May 3 SIT SERENADE OF THE SEA 08:00 - 17:00	Wednesday, May 4 SIT EURODAM 08:00 - 17:00	Thursday, May 5 SIT NOORDAM 08:00 - 17:00	Friday, May 6	Saturday, May 7 SIT SAPPHIRE PRINCESS 07:00 - 17:00 SIT OVATION OF SEAS 09:00 - 17:00
0	2500	2500	5080	2000	0	7180
Sunday, May 8	Monday, May 9 SIT RADIANCE OF THE SEA 08:00 - 17:00	Tuesday, May 10 SIT NOORDAM 10:00 - 18:00	Wednesday, May 11 SIT EURODAM 08:00 - 17:00	Thursday, May 12 SIT WESTERDAM 08:00 - 16:00 SIT QUANTUM OF THE SEA 08:00 - 17:00	Friday, May 13 SIT NORWEGIAN SUN 08:00 - 17:00	Saturday, May 14 SIT NG VENTURE 06:00 - 18:00 SIT SEVEN SEAS MARINER 08:00 - 17:00
0	6500	2000	2000	6180	1950	1135
Sunday, May 15 SIT NG QUEST 06:00 - 18:00	Monday, May 16	Tuesday, May 17 SIT OCEAN VICTORY 06:00 - 17:00 SIT OVATION OF SEAS 08:00 - 17:00	Wednesday, May 18 SIT EURODAM 08:00 - 17:00	Thursday, May 19 SIT NG SEA BIRD 06:00 - 18:00 SIT WESTERDAM 08:00 - 16:00	Friday, May 20 SIT SERENADE OF THE SEA 06:00 - 14:00 SIT VIKING ORION 08:00 - 16:00	Saturday, May 21
400	4000	7480	2000	2643	3400	0
Sunday, May 22	Monday, May 23 SIT RADIANCE OF THE SEA 08:00 - 17:00 SIT SILVER MUSE 08:30 - 17:00	Tuesday, May 24 SIT SERENADE OF THE SEA 09:00 - 18:00	Wednesday, May 25 SIT EURODAM 08:00 - 17:00 SIT QUANTUM OF THE SEA 09:30 - 18:00	Thursday, May 26 SIT VIKING ORION 08:00 - 16:00 SIT WESTERDAM 08:00 - 16:00	Friday, May 27 SIT SEVEN SEAS MARINER 08:00 - 18:00	Saturday, May 28 SIT NG VENTURE 06:00 - 18:00 SIT ROALD AMUNDSEN 08:00 - 16:00
0	7096	2500	6180	2900	735	700
Sunday, May 29 SIT NG QUEST 06:00 - 18:00	Monday, May 30 SIT SEABOURN ODYSSEY 08:00 - 17:00 SIT SYLVIA EARLE 17:00 -	Tuesday, May 31 SIT SYLVIA EARLE - 18:00 SIT REGATTA 07:00 - 16:00	Wednesday, June 1 SIT EURODAM 08:00 - 17:00	Thursday, June 2 SIT WESTERDAM 08:00 - 16:00 SIT NORWEGIAN SUN 10:00 - 20:00	Friday, June 3 SIT SERENADE OF THE SEA 06:30 - 14:00 SIT CARNIVAL MIRACLE 10:00 - 18:00	Saturday, June 4
400	5050	8769	2000	3950	4600	0
Sunday, June 5 SIT OVATION OF SEAS 09:00 - 17:00	Monday, June 6 SIT SILVER MUSE 08:30 - 17:00	Tuesday, June 7 SIT OCEAN VICTORY 06:00 - 17:00 SIT REGATTA 07:00 - 16:00	Wednesday, June 8 SIT NG SEA BIRD 06:00 - 18:00 SIT VIKING ORION 07:00 - 16:00	Thursday, June 9 SIT WESTERDAM 08:00 - 16:00 SIT QUANTUM OF THE SEA 08:00 - 17:00	Friday, June 10 SIT QUEEN ELIZABETH 07:00 - 17:00 SIT SEVEN SEAS	Saturday, June 11 SIT NG VENTURE 06:00 - 18:00
4180	4596	6193	3200	6180	935	400
Sunday, June 12 SIT NG QUEST 06:00 - 18:00	Monday, June 13 SIT SILVER SHADOW 08:30 - 17:00 SIT CARNIVAL MIRACLE 10:00 - 18:00	Tuesday, June 14 SIT REGATTA 07:00 - 16:00 SIT SERENADE OF THE SEA 08:00 - 17:00	Wednesday, June 15 SIT VIKING ORION 08:00 - 16:00 SIT EURODAM 08:00 - 17:00	Thursday, June 16 SIT WESTERDAM 08:00 - 16:00	Friday, June 17	Saturday, June 18
400	6482	4589	2900	2000	0	0
Sunday, June 19	Monday, June 20 SIT QUEEN ELIZABETH 08:00 - 17:00 SIT SILVER MUSE	Tuesday, June 21 SIT ROALD AMUNDSEN 08:00 - 16:00 SIT RADIANCE OF THE SEA 08:00 - 17:00	Wednesday, June 22 SIT EURODAM 08:00 - 17:00 SIT QUANTUM OF THE SEA 09:30 - 18:00	Thursday, June 23 SIT WESTERDAM 08:00 - 16:00 SIT NORWEGIAN SUN 10:00 - 20:00	Friday, June 24 SIT REGATTA 07:00 - 16:00 SIT SEABOURN ODYSSEY 08:00 - 17:00	Saturday, June 25 SIT NG VENTURE 06:00 - 18:00
0	4796	5682	6180	3950	1978	400
Sunday, June 26 SIT NG QUEST 06:00 - 18:00	Monday, June 27 SIT STAR BREEZE 08:00 - 16:00 SIT SILVER SHADOW 08:30 - 17:00	Tuesday, June 28 SIT OCEAN VICTORY 06:00 - 17:00 SIT NG SEA BIRD 06:00 - 18:00	Wednesday, June 29 SIT VIKING ORION 08:00 - 16:00 SIT EURODAM 08:00 - 17:00	Thursday, June 30 SIT WESTERDAM 08:00 - 16:00	Friday, July 1 SIT ROALD AMUNDSEN 09:00 - 18:00	Saturday, July 2 SIT CRYSTAL SERENITY 09:00 - 17:00
400	4632	3646	2900	2000	300	900
Sunday, July 3 SIT OVATION OF SEAS 09:00 - 17:00	Monday, July 4 SIT REGATTA 07:00 - 16:00 SIT SEABOURN ODYSSEY 08:00 - 17:00	Tuesday, July 5 SIT VIKING ORION 08:00 - 16:00 SIT RADIANCE OF THE SEA 08:00 - 17:00	Wednesday, July 6 SIT EURODAM 08:00 - 17:00 SIT STAR BREEZE 09:00 - 16:00	Thursday, July 7 SIT WESTERDAM 08:00 - 16:00 SIT QUANTUM OF THE SEA 08:00 - 17:00	Friday, July 8 SIT SEVEN SEAS MARINER 08:00 - 18:00	Saturday, July 9 SIT NG VENTURE 06:00 - 18:00
4180	5839	6282	2250	6180	735	400
Sunday, July 10 SIT NG QUEST 06:00 - 18:00	Monday, July 11 SIT ROALD AMUNDSEN 08:00 - 16:00 SIT SILVER MUSE SIT SILVER SHADOW	Tuesday, July 12 SIT OVATION OF SEAS 08:00 - 17:00 SIT SILVER MUSE 08:30 - 17:00	Wednesday, July 13 SIT EURODAM 08:00 - 17:00 SIT QUEEN ELIZABETH 12:00 -	Thursday, July 14 SIT CRYSTAL SERENITY 07:00 - 18:00 SIT WESTERDAM 08:00 - 16:00	Friday, July 15 SIT SERENADE OF THE SEA 06:00 - 14:00	Saturday, July 16
400	6632	8369	2200	2900	2500	0
Sunday, July 17	Monday, July 18 SIT NG SEA BIRD 06:00 - 18:00 SIT SEABOURN ODYSSEY 08:00 - 17:00	Tuesday, July 19 SIT OCEAN VICTORY 06:00 - 17:00 SIT VIKING ORION 08:00 - 16:00	Wednesday, July 20 SIT EURODAM 08:00 - 17:00 SIT QUANTUM OF THE SEA 09:30 - 18:00	Thursday, July 21 SIT WESTERDAM 08:00 - 16:00 SIT CRYSTAL SERENITY 12:00 - 18:00	Friday, July 22 SIT SEVEN SEAS MARINER 08:00 - 18:00	Saturday, July 23 SIT NG VENTURE 06:00 - 18:00
0	6139	6582	8130	2900	735	400
Sunday, July 24 SIT NG QUEST 06:00 - 18:00 SIT STAR BREEZE 07:00 - 13:00	Monday, July 25 SIT VIKING ORION 08:00 - 16:00 SIT SILVER SHADOW 08:30 - 17:00	Tuesday, July 26 SIT SERENADE OF THE SEA 08:00 - 17:00 SIT SILVER MUSE 08:30 - 17:00	Wednesday, July 27 SIT EURODAM 08:00 - 17:00	Thursday, July 28 SIT WESTERDAM 08:00 - 16:00	Friday, July 29 SIT REGATTA 08:00 - 16:00 SIT NORWEGIAN SPIRIT 10:00 - 20:00	Saturday, July 30

650	5282	6096	2000	2000	2543	0
Sunday, July 31 SIT OVATION OF SEAS 09:00 - 17:00	Monday, August 1 SIT SEABOURN ODYSSEY 08:00 - 17:00 SIT SILVER MUSE 08:30 - 17:00	Tuesday, August 2 SIT RADIANCE OF THE SEA 08:00 - 17:00 SIT SILVER SHADOW 08:30 - 17:00	Wednesday, August 3 SIT CRYSTAL SERENITY 08:00 - 17:00 SIT EURODAM 08:00 - 17:00	Thursday, August 4 SIT WESTERDAM 08:00 - 16:00 SIT QUANTUM OF THE SEA 08:00 - 17:00	Friday, August 5 SIT STAR BREEZE 08:00 - 17:00 SIT SEVEN SEAS MARINER 08:00 - 18:00	Saturday, August 6 SIT NG VENTURE 06:00 - 18:00
4180	5246	5382	2900	6480	1578	400
Sunday, August 7 SIT NG QUEST 06:00 - 18:00 SIT NG SEA BIRD 06:00 - 18:00	Monday, August 8 SIT VIKING ORION 08:00 - 16:00 SIT SILVER SHADOW 08:30 - 17:00	Tuesday, August 9 SIT OCEAN VICTORY 06:00 - 17:00 SIT OVATION OF SEAS 08:00 - 17:00	Wednesday, August 10 SIT EURODAM 08:00 - 17:00	Thursday, August 11 SIT WESTERDAM 08:00 - 16:00 SIT STAR BREEZE 09:00 - 16:00	Friday, August 12 SIT SERENADE OF THE SEA 06:00 - 14:00 SIT ROALD AMUNDSEN 08:00 -	Saturday, August 13
2400	5282	8076	2000	2250	2800	0
Sunday, August 14 SIT VIKING ORION 08:00 - 16:00	Monday, August 15 SIT REGATTA 08:00 - 16:00 SIT SEABOURN ODYSSEY 08:00 - 17:00	Tuesday, August 16 SIT RADIANCE OF THE SEA 08:00 - 17:00 SIT SILVER SHADOW 08:30 - 17:00	Wednesday, August 17 SIT EURODAM 08:00 - 17:00 SIT QUANTUM OF THE SEA 09:30 - 18:00	Thursday, August 18 SIT WESTERDAM 08:00 - 16:00	Friday, August 19 SIT SEVEN SEAS MARINER 08:00 - 18:00	Saturday, August 20 SIT NG VENTURE 06:00 - 18:00
900	5839	5382	8130	2000	735	400
Sunday, August 21 SIT NG QUEST 06:00 - 18:00	Monday, August 22 SIT SILVER SHADOW 08:30 - 17:00	Tuesday, August 23 SIT SERENADE OF THE SEA 08:00 - 17:00 SIT SILVER MUSE 08:30 - 17:00	Wednesday, August 24 SIT EURODAM 08:00 - 17:00	Thursday, August 25 SIT WESTERDAM 08:00 - 16:00 SIT NORWEGIAN SUN 10:00 - 20:00	Friday, August 26 SIT STAR BREEZE 08:00 - 17:00 SIT NORWEGIAN SPIRIT 10:00 - 20:00	Saturday, August 27 SIT NG SEA BIRD 06:00 - 18:00
400	4382	6096	2000	3950	2200	50
Sunday, August 28 SIT VIKING ORION 08:00 - 16:00 SIT OVATION OF SEAS 09:00 - 17:00	Monday, August 29 SIT SEABOURN ODYSSEY 08:00 - 17:00 SIT SILVER MUSE 08:30 - 17:00	Tuesday, August 30 SIT OCEAN VICTORY 06:00 - 17:00 SIT RADIANCE OF THE SEA 08:00 - 17:00	Wednesday, August 31 SIT EURODAM 08:00 - 17:00 SIT RUBY PRINCESS 10:00 - 18:00	Thursday, September 1 SIT WESTERDAM 08:00 - 16:00 SIT QUANTUM OF THE SEA 08:00 - 17:00	Friday, September 2 SIT REGATTA 08:00 - 17:00 SIT SEVEN SEAS MARINER 08:00 - 18:00	Saturday, September 3 SIT NG VENTURE 06:00 - 18:00
5080	5246	5682	5000	6180	1328	400
Sunday, September 4 SIT NG QUEST 06:00 - 18:00 SIT NORWEGIAN SPIRIT 10:00 - 20:00	Monday, September 5 SIT SILVER SHADOW 08:30 - 17:00	Tuesday, September 6 SIT NG SEA BIRD 06:00 - 18:00 SIT VIKING ORION 08:00 - 17:00	Wednesday, September 7 SIT EURODAM 08:00 - 17:00	Thursday, September 8 SIT WESTERDAM 08:00 - 16:00	Friday, September 9 SIT SERENADE OF THE SEA 06:00 - 14:00 SIT NORWEGIAN SUN 08:00 - 17:00	Saturday, September 10
2350	4382	8726	2000	2000	5100	0
Sunday, September 11	Monday, September 12 SIT RADIANCE OF THE SEA 08:00 - 17:00	Tuesday, September 13 SIT SILVER SHADOW 08:30 - 18:00 SIT NIEUW AMSTERDAM 10:00 -	Wednesday, September 14 SIT EURODAM 08:00 - 17:00 SIT QUANTUM OF	Thursday, September 15 SIT WESTERDAM 08:00 - 16:00	Friday, September 16 SIT SEVEN SEAS MARINER 08:00 - 18:00	Saturday, September 17 SIT VIKING ORION 08:00 - 16:00
0	6500	3382	8330	2000	735	900
Sunday, September 18 SIT SOLSTICE 09:30 - 18:00	Monday, September 19 SIT SEABOURN ODYSSEY 08:00 - 17:00	Tuesday, September 20 SIT OCEAN VICTORY 06:00 - 17:00 SIT GRAND PRINCESS 07:00 - 16:00	Wednesday, September 21 SIT EURODAM 08:00 - 17:00	Thursday, September 22 SIT WESTERDAM 08:00 - 16:00	Friday, September 23 SIT VIKING ORION 08:00 - 18:00	Saturday, September 24
3000	4650	5800	4000	2000	2850	400
Sunday, September 25	Monday, September 26 SIT SEVEN SEAS MARINER 07:00 - 15:00	Tuesday, September 27	Wednesday, September 28 SIT EURODAM 08:00 - 17:00	Thursday, September 29 SIT QUANTUM OF THE SEA 08:00 - 17:00	Friday, September 30	Saturday, October 1 SIT SILVER WIND 12:00 - 18:00
0	735	0	4000	4180	0	300
Sunday, October 2	Monday, October 3 SIT REGATTA 08:00 - 17:00	Tuesday, October 4	Wednesday, October 5	Thursday, October 6	Friday, October 7	Saturday, October 8
0	593	0	0	0	0	0