

U. S. SURVEY
No. 3670, ALASKA
embracing
Lots 1 through 6
SITUATED

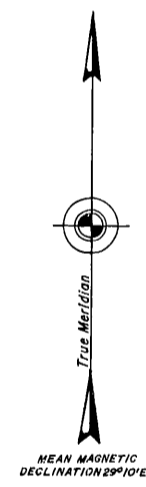
ON THE EASTERN SHORE OF SITKA SOUND
APPROXIMATELY 8 MILES NORTH OF SITKA, ALASKA

Approximate Geographic Position of Meander Corner No. 1
Latitude 57°07' 1/2" N. Longitude 135°23' 1/2" W.

AREA: 871.72 ACRES

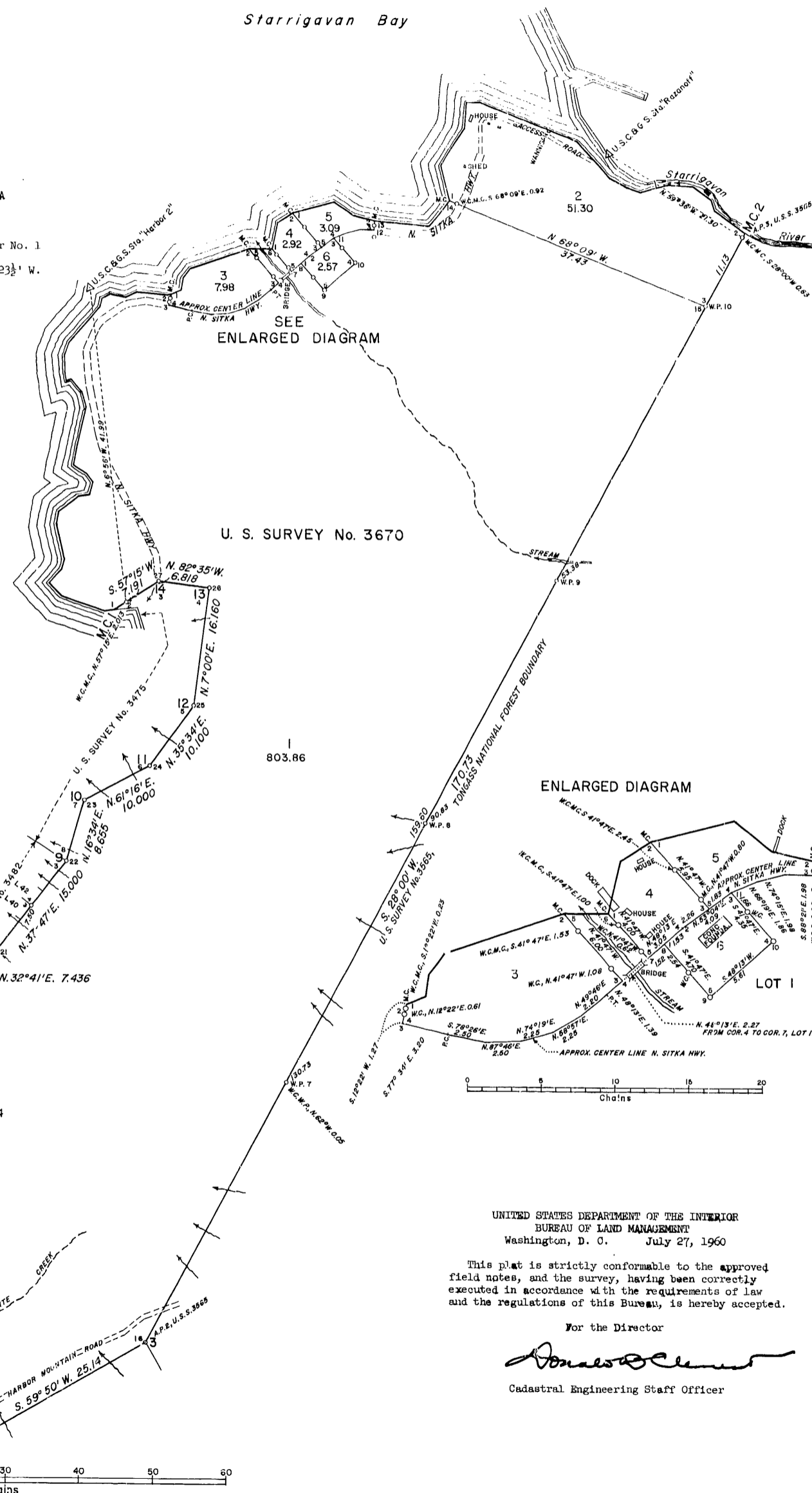
Executed By
Walter W. Cooley, Cadastral Surveyor
May 29 to June 25, 1959
Under Special Instructions
Dated and Approved
April 27, 1959

U. S. SURVEY No. 3670



SITKA SOUND

o indicates brass capped iron post



803.86

ENLARGED DIAGRAM

LOT 1

UNITED STATES DEPARTMENT OF THE INTERIOR
BUREAU OF LAND MANAGEMENT
Washington, D. C. July 27, 1960
This plat is strictly conformable to the approved
field notes, and the survey, having been correctly
executed in accordance with the requirements of law
and the regulations of this Bureau, is hereby accepted.

For the Director
Walter W. Cooley
Cadastral Engineering Staff Officer

E.P.D. 0 5 10 20 30 40 50 60
Chains