

CERTIFICATE OF OWNERSHIP AND DEDICATION

I (we) hereby certify that I am (we are) the owner(s) of the property shown and described hereon and that I (we) hereby adopt this plan of subdivision with my (our) free consent, and dedicate all streets, alleys, walks, parks and other open spaces to public or private use as noted.

March 3, 1959

Date

Witnessed by

John D. Ballard

Witness

Chas Campbell

Witness

Frankenstein

Owner

Owner

CERTIFICATE OF REGISTERED ENGINEER OR SURVEYOR

I hereby certify that I am a registered professional civil engineer/land surveyor and that this Plat represents the survey made by me or under my direct supervision, and the and the monuments shown thereon actually exist as located, and that all dimensional and other details are correct.

March 3, 1959

Date

John D. Ballard

Registered Engineer or Surveyor

SEAL



CERTIFICATION OF APPROVAL BY THE BOARD

I hereby certify that the Subdivision Plat shown hereon has been found to comply with the Subdivision Regulations of the Sitka Planning Board, and that said Plat has been approved by the Board by Plat Resolution No. March 2, 1959, and that the Plat shown hereon has been approved for recording in the office of the United States Commissioner, ex-officio Recorder, Sitka.

March 4, 1959

Date

W. Stewart

Chairman, Planning Board

ATTEST:

W. Stewart

Secretary

SEAL

CERTIFICATION OF APPROVAL BY THE COUNCIL

I hereby certify that the Subdivision Plat shown hereon has been found to comply with the Subdivision Regulations of the City of Sitka, and that said Plat has been approved by the Common Council as recorded in Minutes Book 1958, page 266, dated March 2, 1959, and that the Plat shown hereon has been approved for recording in the office of the United States Commissioner, ex-officio Recorder, Sitka, Alaska.

March 4, 1959

Date

W. Stewart

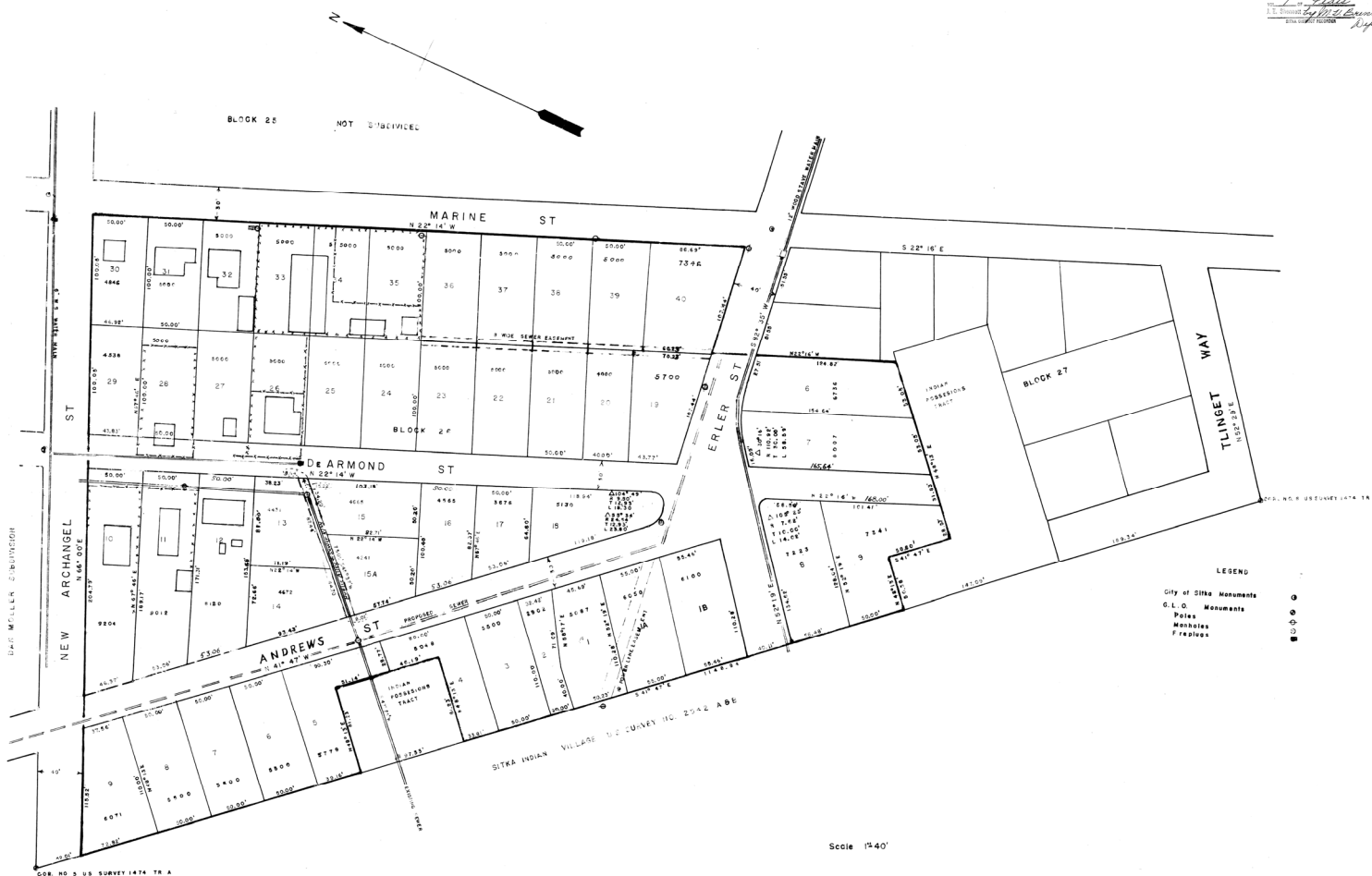
Mayor

ATTEST:

W. Stewart

City Clerk

SEAL



SPRUCE GLEN SUBDIVISION

Block 26 and part of Block 27, U.S. Survey 1474 Tr "A"
Owner Frank R. Gesslin
Surveyed by John C. Fox and John D. Ballard
Showing Sewer Easements and Relocation of Erler Street

Spruce Glen Sub.
Survey No. 1 #2

SPRUCE GLEN SUBDIVISION

FILED: MAY 1, 1959

No 2

No 2