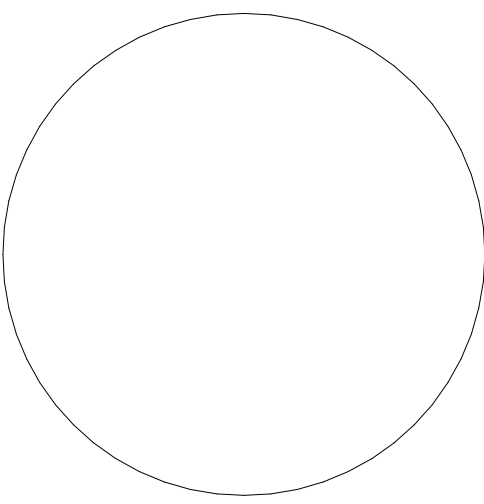


**GENERAL NOTES:**

1. CONTRACTOR SHALL FIELD VERIFY ACTUAL BUILDING CONDITIONS AND DIMENSIONS. WHERE DISCREPANCIES OR CONFLICTS ARE FOUND, NOTIFY ARCHITECT PRIOR TO COMMENCING WORK.
2. DO NOT SCALE OFF OF DRAWINGS.
3. DIMENSIONS ARE TO GRIDLINE, FACE OR CENTER OF FRAMING UNO.
4. WHERE DOOR OPENINGS ARE NOT DIMENSIONED, LOCATE DOOR OPENINGS TO ENSURE 3" MIN JAMB FRAMING.



01/17/2024

**NorthWind Architects, LLC**

126 Seward St  
Juneau, AK 99801  
Ph #907.586.6150  
www.northwindarch.com

← 1" ACTUAL →  
IF THE ABOVE DIMENSION DOES NOT MEASURE ONE INCH (1") EXACTLY, THIS DRAWING WILL HAVE BEEN ENLARGED OR REDUCED, AFFECTING ALL LABEL SCALES.

**Hitx'i Sáani 'Little Houses' Community**

SITKA HOMELESS COALITION  
US Survey 3895 Lot 3  
SITKA, ALASKA

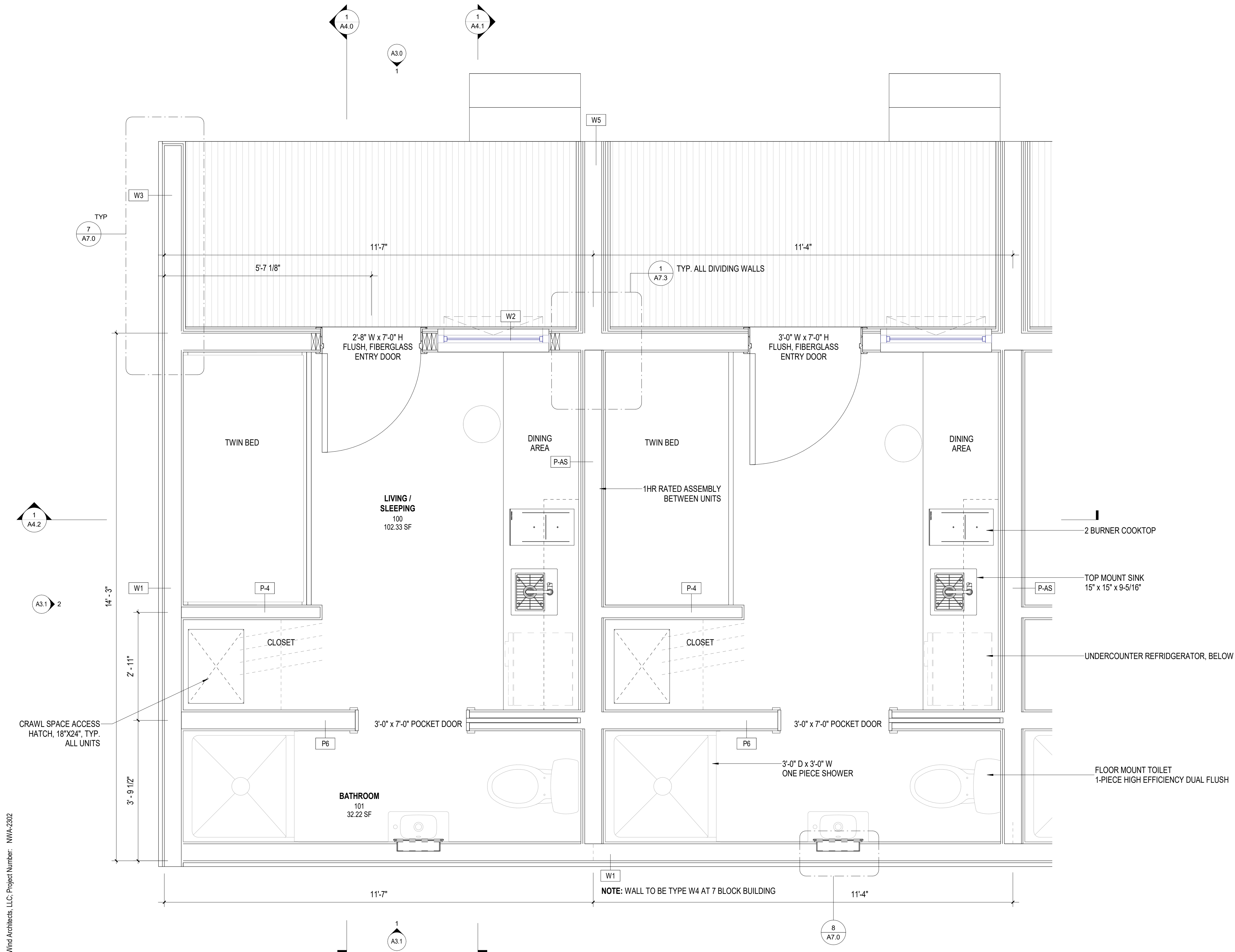
SHEET TITLE:  
**STANDARD UNIT FLOOR PLAN**

CHECKED \_\_\_\_\_ Approver  
DRAWN \_\_\_\_\_ Author

issue date description

SHEET # **A2.0**

ISSUE DATE 01/17/2024

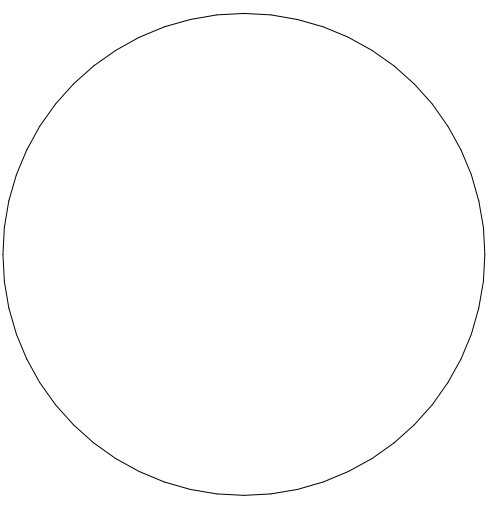


© NorthWind Architects, LLC, Project Number: NWA-2302

**1 STANDARD SINGLE UNIT FLOOR PLAN**  
3/4" = 1'-0"

**GENERAL NOTES:**

1. CONTRACTOR SHALL FIELD VERIFY ACTUAL BUILDING CONDITIONS AND DIMENSIONS. WHERE DISCREPANCIES OR CONFLICTS ARE FOUND, NOTIFY ARCHITECT PRIOR TO COMMENCING WORK.
2. DO NOT SCALE OFF OF DRAWINGS.
3. DIMENSIONS ARE TO GRIDLINE, FACE OR CENTER OF FRAMING UNO.
4. WHERE DOOR OPENINGS ARE NOT DIMENSIONED, LOCATE DOOR OPENINGS TO ENSURE 3" MIN JAMB FRAMING.

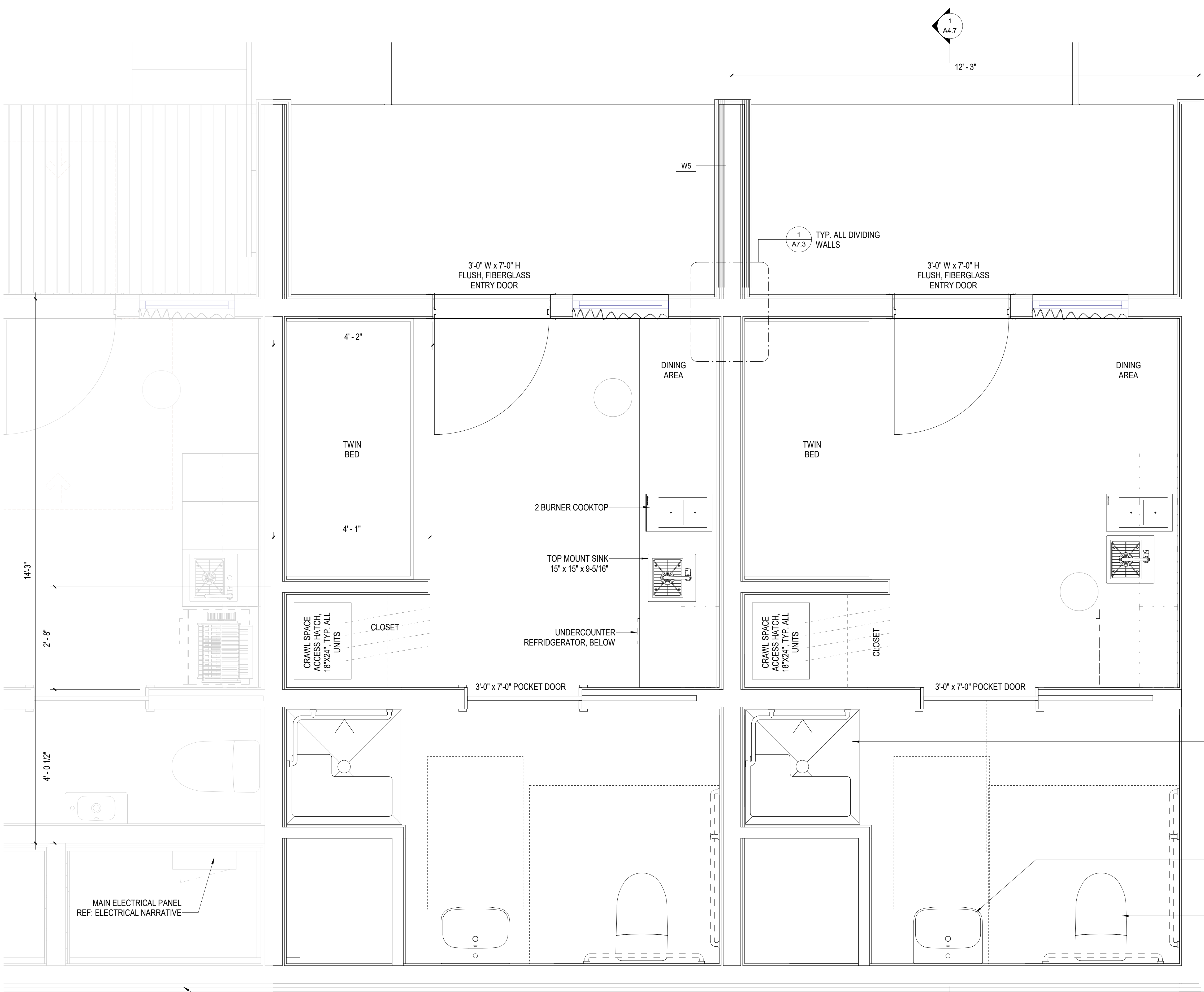


01/17/2024

**NorthWind Architects, LLC**

126 Seward St  
Juneau, AK 99801  
Ph #907.586.6150  
www.northwindarch.com

← 1" ACTUAL →  
IF THE ABOVE DIMENSION DOES NOT MEASURE ONE INCH (1") EXACTLY, THIS DRAWING WILL HAVE BEEN ENLARGED OR REDUCED, AFFECTING ALL LABEL SCALES.



3'-0" D x 3'-0" W ADA COMPLIANT ONE PIECE SHOWER  
 • CONTROL WALL ON PLAN NORTH SIDE PER ANSI A117.1 608.2.1  
 • GRAB BARS PROVIDED PER ANSI A117.1 608.3.1

WALL MOUNT VANITY SINK WITH MEDICINE CABINET/MIRROR ABOVE  
 • BOD: KOHLER MODERNLIFE-K-77767-1-0  
 • MOUNTED 34" AFF MAXIMUM

FLOOR MOUNT TOILET  
 1-PIECE HIGH EFFICIENCY DUAL FLUSH

INSULATED ACCESS PANEL DOOR  
 MIN 30" x 60" CLEAR OPENING  
 ALIGN CENTER ON MAIN ELECTRICAL PANEL

2 ENLARGED FLOOR PLAN - ADA UNITS  
 3/4" = 1'-0"

© NorthWind Architects, LLC, Project Number: NWA-2302

**Hitx'i Sáani 'Little Houses' Community**

SITKA HOMELESS COALITION  
 US Survey 3695 Lot 3  
 SITKA, ALASKA

SHEET TITLE:  
**ADA UNIT FLOOR PLAN**

CHECKED	Approver
DRAWN	Author
issue	date description

SHEET # **A2.1**

ISSUE DATE 01/17/2024