

## **POSSIBLE MOTION**

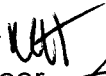

**I MOVE TO approve a permanent transfer of CBS Property Lot 18 Sawmill Cove Industrial Park to the Water Enterprise Fund and a transfer of \$65,560.00 from the UV Facility Capital Account to Sawmill Cove Industrial Park Fund.**


---

## MEMORANDUM

---

**To:** Mayor Westover and Members of the Assembly  
Jim Dinley, Municipal Administrator

**From:** Michael Harmon, P.E. Public Works Director   
Stephen Weatherman, P.E, Municipal Engineer 

**Reviewed:** Jay Sweeney, Finance Director  
Tammy O'Neil Contract Coordinator 

**Date:** April 18, 2012

**Subject:** UV Disinfection Facility use of Lot 18 Sawmill Cove Industrial Park

---

### **Background**

The Enhanced Surface Water Treatment Rules (ESWTRs) were issued by Environmental Protection Agency (EPA) requiring drinking water systems to provide additional microbial and disinfection controls for surface water systems. The Long Term 1 & 2 ESWTRs require public health protection against *Cryptosporidium*, while addressing risk tradeoffs with disinfection by-products. This additional treatment must be in operation and approved by the State DEC before October 1, 2014. To meet these requirements the design of the UV Disinfection Facility has been moving forward to the point where site selection must be finalized.

### **Analysis**

The UV Disinfection Facility requires a site near the water transmission main that runs from the Blue Lake Reservoir to Sitka. Lot 18 provides a location near the transmission main that is an efficient and a cost effective site owned by the CBS. The facility provides disinfection to the drinking water for the resident, commercial and industrial users of Sitka including the parcels within the Sawmill Cove Industrial Park. The SCIP Board approved the transfer of lot 18 to the Water Fund for the assessed value of \$65,560.00

### **Fiscal Note:**

The Assessing Director Randy Hughes established a value of \$3.75 to \$4.00 per square foot for the parcel. Lot 18 has 16,380 square feet for a total value of \$65,560. The project has a \$2,500,000 loan with an additional \$1,500,000 principal forgiveness. In addition to these existing funding sources a grant for 3,500,000 (MMG#78317) has been received and is undergoing final processing at DEC. A loan DWF#783481 for

\$2,550,000 was included in the 2012 Drinking Water Fund allocation and a loan application has been submitted.

**Recommendation:**

**Approve the permanent transfer of CBS Property Lot 18 Sawmill Cove Industrial Park to the Water Enterprise Fund including a transfer of \$65,560.00 from the UV Facility Capital Account to SMCIP Fund to account for the value of the permanent transfer of the CBS property form the SCIP Fund.**



**LEGEND**

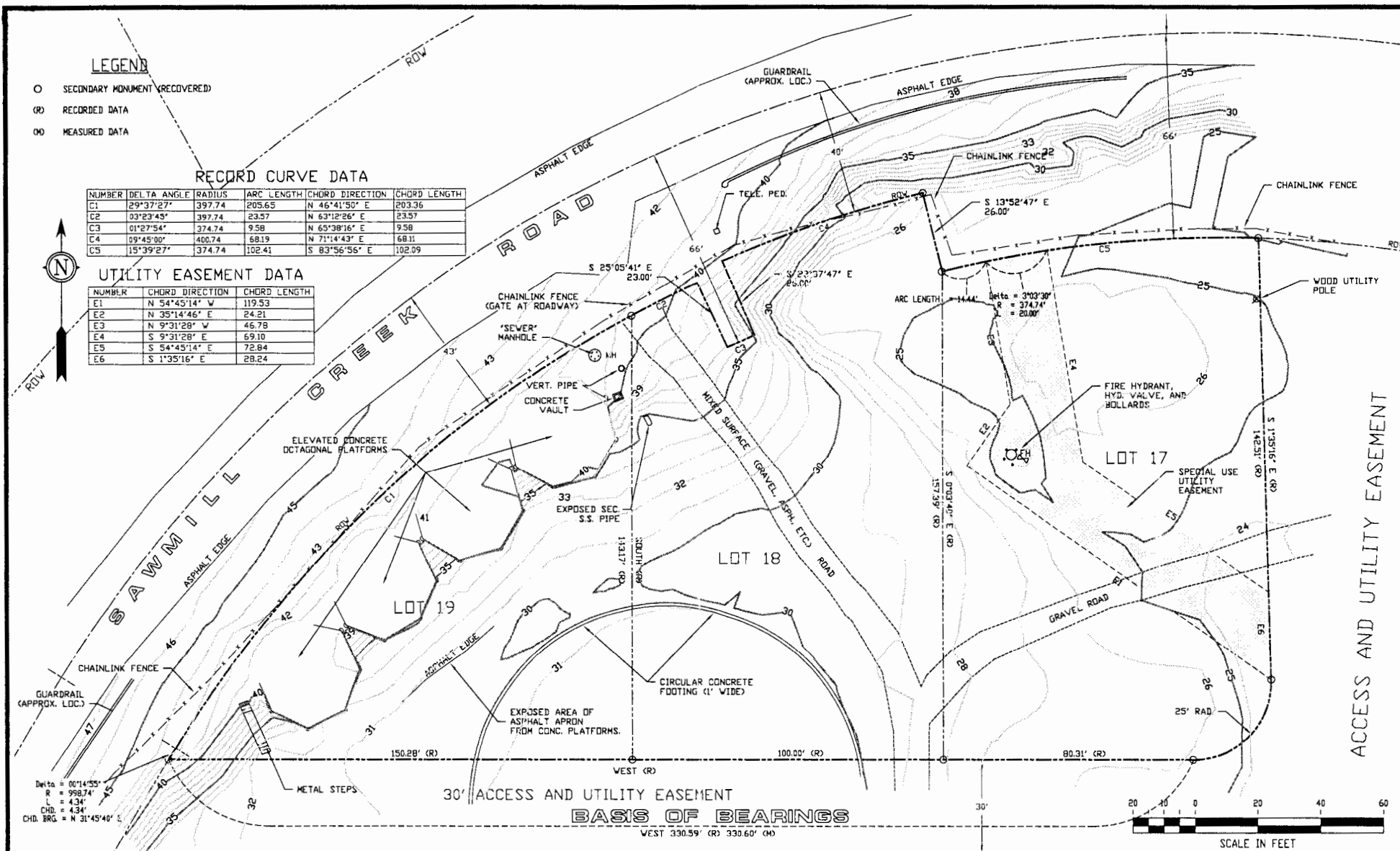
- SECONDARY MONUMENT (RECOVERED)
- (R) RECORDED DATA
- (D) MEASURED DATA

**RECORD CURVE DATA**

NUMBER	DELTA ANGLE	RADIUS	ARC LENGTH	CHORD DIRECTION	CHORD LENGTH
C1	29°37'27"	397.74	205.65	N 46°41'50" E	203.36
C2	03°23'45"	397.74	23.57	N 63°12'26" E	23.57
C3	01°27'54"	374.74	9.58	N 65°38'16" E	9.58
C4	09°45'00"	400.74	68.19	N 71°14'43" E	68.11
C5	15°39'27"	374.74	102.41	S 83°56'56" E	102.09

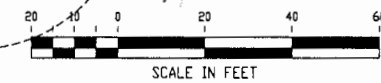
**UTILITY EASEMENT DATA**

NUMBER	CHORD DIRECTION	CHORD LENGTH
E1	N 54°45'14" W	119.53
E2	N 35°14'46" E	24.21
E3	N 9°31'28" W	46.78
E4	S 9°31'28" E	69.10
E5	S 54°45'14" E	72.84
E6	S 1°35'16" E	28.24



Delta = 00°14'55"  
 R = 998.74'  
 L = 4.34'  
 CHD. = 4.34'  
 CHD. BRG. = N 31°45'46" E

30' ACCESS AND UTILITY EASEMENT  
**BASIS OF BEARINGS**  
 WEST 330.59' (R) 330.60' (D)



**O'NEILL**  
**SURVEYING AND ENGINEERING**  
 BOX 1849 SITKA, ALASKA 99835  
 PHONE: (907) 747-6700  
 FAX: (907) 747-7590  
 EMAIL: onell@alaska.net

NO	DATE	REV.	DESCRIPTION OF CHANGE

RECORD OF REVISIONS



DESIGNED: P. O'NEILL  
 DRAWN: M. GARCIA  
 CHECKED: ENO  
 DATE OF PLOT: 23. JUN. 8. 2009  
 SCALE: 1" = 20'  
 DRAWING NAME: 30014-156  
 PROJECT NO: 30014-156-00

**SURVEYOR'S CERTIFICATE**  
 I HEREBY CERTIFY THAT I AM A REGISTERED SURVEYOR, LICENSED IN THE STATE OF ALASKA AND THAT ON Sept. 22, 2009, A SURVEY OF THE ABOVE DESCRIBED LANDS WAS CONDUCTED UNDER MY DIRECT SUPERVISION AND THAT THIS PLAN IS A TRUE AND ACCURATE REPRESENTATION OF THE FIELD NOTES OF SAID SURVEY, AND THAT ALL DIMENSIONS AND OTHER DETAILS ARE CORRECT ACCORDING TO SAID FIELD NOTES.

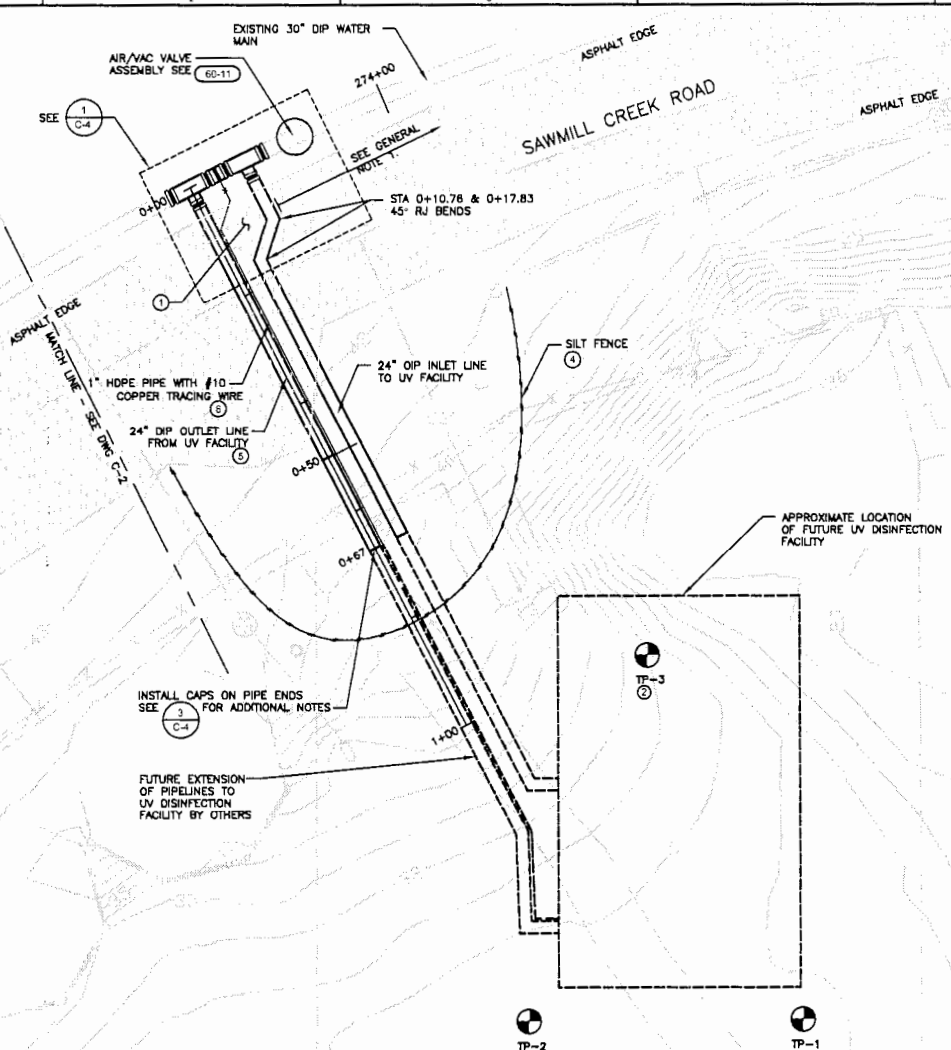
9/25/09 Patrick H. O'Neill  
 DATE PATRICK H. O'NEILL, L.S. 22025

**TOPOGRAPHIC SURVEY**  
**LOTS 17, 18, AND 19, SAWMILL COVE INDUSTRIAL PARK RESUBDIVISION #1**  
 CLIENT: CBS

SHEET 1 OF 1

5 PIPELINE STATION DATA  
BASED ON LOCAL  
COORDINATE SYSTEM

STATIONING	COORDINATES
0+00.00	N 8546.15 E 5619.36
0+67.00	N 8629.97 E 5576.61



**CONSTRUCTION NOTES**

- 1 THE OWNER WILL IDENTIFY AND STAKE THE TIE-IN LOCATIONS. FIELD LOCATE SAWCUTS AND SURFACE RESTORATION TO PROVIDE SMOOTH TRANSITION FROM EXISTING PAVEMENT TO NEW BASE COURSE. GRADING D-1 SURFACING. SEE SHEET C-9 STANDARD DETAIL 40-1 FOR SAWCUT DETAILS.
- 2 TEST PIT INFORMATION AND GEOTECHNICAL REPORT AVAILABLE ON REQUEST.
- 3 CLEARING LIMITS APPROXIMATELY 5 FEET MAX OUTSIDE OF GRADING OR SILT/BARRIER FENCE. DO NOT EXCEED LIMITS WITHOUT PRIOR AUTHORIZATION FROM THE PROJECT ENGINEER. CLEARING BEYOND CLEARING LIMITS WILL BE AT CONTRACTOR'S SOLE EXPENSE.
- 4 SILT FENCE PER AKDOT STANDARDS. PLACE DOWN SLOPE OF CONSTRUCTION AREA.
- 5 STATIONING FOLLOWS CENTERLINE OF OUTLET LINE.
- 6 ONE END OF THE COPPER TRACING WIRE SHALL BE BROUGHT TO THE SURFACE ON THE OUTSIDE OF THE VALVE BOX AND THE OTHER END SHALL BE BROUGHT TO THE SURFACE AT THE END OF THE 1" HDPE PIPE. THE HDPE PIPE AND TRACING WIRE WILL BE EXTENDED TO THE UV BUILDING AS PART OF A SUBSEQUENT CONTRACT BY OTHERS.

**CONSTRUCTION SEQUENCE**

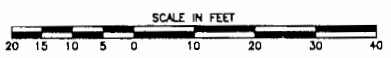
- THE WORK SHALL OCCUR IN FIVE STAGES.
1. STAGE 1 SHALL CONSIST OF INSTALLING A TEMPORARY LINE STOP AS SHOWN ON DRAWING C-2. AFTER THE LINE STOP IS INSTALLED, THE OWNER WILL OPEN VALVES AS REQUIRED TO DRAIN THE PIPELINE IN THE AREA WHERE THE TEES WILL BE INSTALLED FOR THE UV DISINFECTION FACILITY.
  2. STAGE 2 SHALL CONSIST OF INSTALLING THE 30" FLANGED END SPOOL, FITTINGS, AND VALVES INCLUDING THE 24" VALVES. AFTER THE PIECES ARE INSTALLED, THE OWNER WILL RE-OPEN THE NECESSARY ISOLATION VALVES TO RE-FILL THE LINE.
  3. STAGE 3 SHALL CONSIST OF INSTALLING SECTIONS OF THE 24" PIPE AND INSTALLING THRUST BLOCKS WHILE THE WEST BOUND TRAFFIC LANE IS CLOSED. STAGE 3 WORK ALSO INCLUDES INSTALLATION OF THE AIR/VAC VALVE ASSEMBLY. CONNECTIONS TO THE EXISTING 30" PIPE FOR THE AIR VALVE OUTLET WILL REQUIRE A HOT TAP UNLESS THE CONNECTION IS MADE WHEN THE MAIN IS DRAINED.
  4. STAGE 4 SHALL CONSIST OF INSTALLING ADDITIONAL SECTIONS OF THE 24" PIPE WHILE THE EAST BOUND LANE IS CLOSED.
  5. STAGE 5 SHALL CONSIST OF INSTALLING THE 24" PIPE TO THE SOUTH WHILE BOTH LANES OF TRAFFIC ARE OPEN.

**SURVEY DATA**

HORIZONTAL CONTROL: BASIS IS SCIP-CHTR  
VERTICAL CONTROL: PK NAIL IN THE ASPHALT APPROACH TO SAWMILL CREEK ROAD, EAST OF LOT 17. ELEVATION IS 29.16 FEET.

**GENERAL NOTES:**

1. BLUE LAKE TIE-IN NO. 1 IS LOCATED APPROXIMATELY 200 FEET TO THE EAST. SEE DRAWING C-5 FOR LOCATION OF BLUE LAKE TIE-INS NO. 1 AND NO. 2.
2. PROVIDE AKDOT-APPROVED TRAFFIC CONTROL DEVICES AS REQUIRED FOR SAFETY WHEN WORKING WITHIN OR ADJACENT TO SAWMILL CREEK ROAD.
3. LINE STOP MAY NOT COMPLETELY STOP FLOW IN THE EXISTING 30" MAIN. PROVIDE PUMPS AS REQUIRED TO KEEP TRENCH DRY. AVOID ALLOWING TRENCH WATER TO ENTER OPEN END OF EXISTING 30" MAIN AND THE PRE-DISINFECTED NEW VALVES AND FITTINGS.
4. OVERHEAD TRANSMISSION LINES ARE PRESENT AT TIE-IN LOCATIONS. CLEARANCE TO THE 88 KV LINES IS APPROXIMATELY 43 FEET. REFER TO THE STANDARD GENERAL PROVISIONS, DIVISION 10, FOR REQUIREMENTS RELATED TO INDUSTRIAL AND PUBLIC SAFETY.



NO.	DATE	BY	FOR
DESIGN		K. KERBIN	DESIGN
DRAWING		K. KERBIN	DRAWING
REVISION		K. KERBIN	REVISION
APPROVED		K. KERBIN	APPROVED

CITY AND BOROUGH OF SITKA  
UV DISINFECTION FACILITY  
PHASE I  
SITKA, ALASKA

**CH2MHILL**

CIVIL  
UV DISINFECTION FACILITY  
PIPING CONNECTION PLAN

VERIFY SCALE  
BAR IS ONE INCH ON ORIGINAL DRAWING

DATE	JANUARY 2012
PROJ	396688
DWG	C-3
SHEET	3