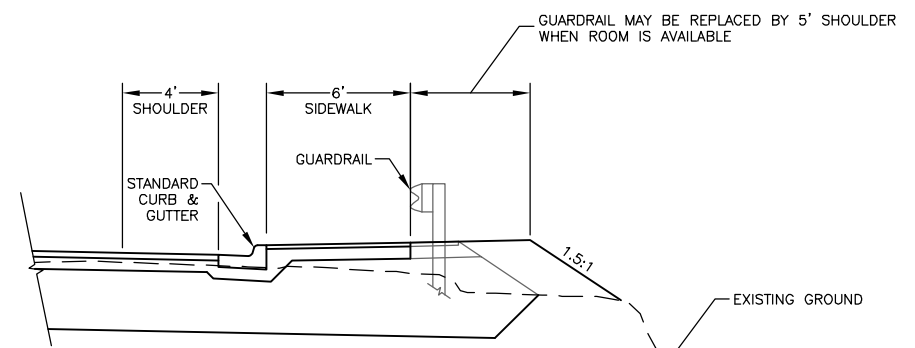


**PROPOSED ACTION**

- MOVES EXISTING ALIGNMENT INTO THE HILLSIDE ENOUGH TO ELIMINATE MOST DOWN HILL RETAINING WALLS AND KEEP ROAD OUT OF EXTREME SUBSIDENCE AREAS
- IMPROVES BICYCLE ACCESS AND ADDS A SEPARATED PEDESTRIAN FACILITY
- REPLACES PART OF PEDESTRIAN BOARDWALK AT WHALE PARK
- INCLUDES A SHORT SCENIC LOOP, PEDESTRIAN PATH OVERLOOKING SILVER BAY
- PICNIC TABLES AND BENCHES AT PULLOUTS AND SCENIC LOOP
- SOME STRAIGHTENING OF CURVES
- SIDEWALK ADDED WITHOUT FILLS INTO SILVER BAY
- ROCK CUTS INCLUDE V-TYPE ROCK FALL DITCH MEETING ROCK FALL STANDARDS
- PROTECTS TWO EAGLE TREES
- ADDITIONAL ROW REQUIRED
- SOME IMPROVEMENT OF ROCK FALL PROBLEM AREA
- ESTIMATED COST IS \$14.3M



SAWMILL CREEK ROAD PHASE III  
 WHALE PARK TO SAWMILL CREEK BRIDGE  
 68216

**PROPOSED ACTION  
 TYPICAL SECTION**

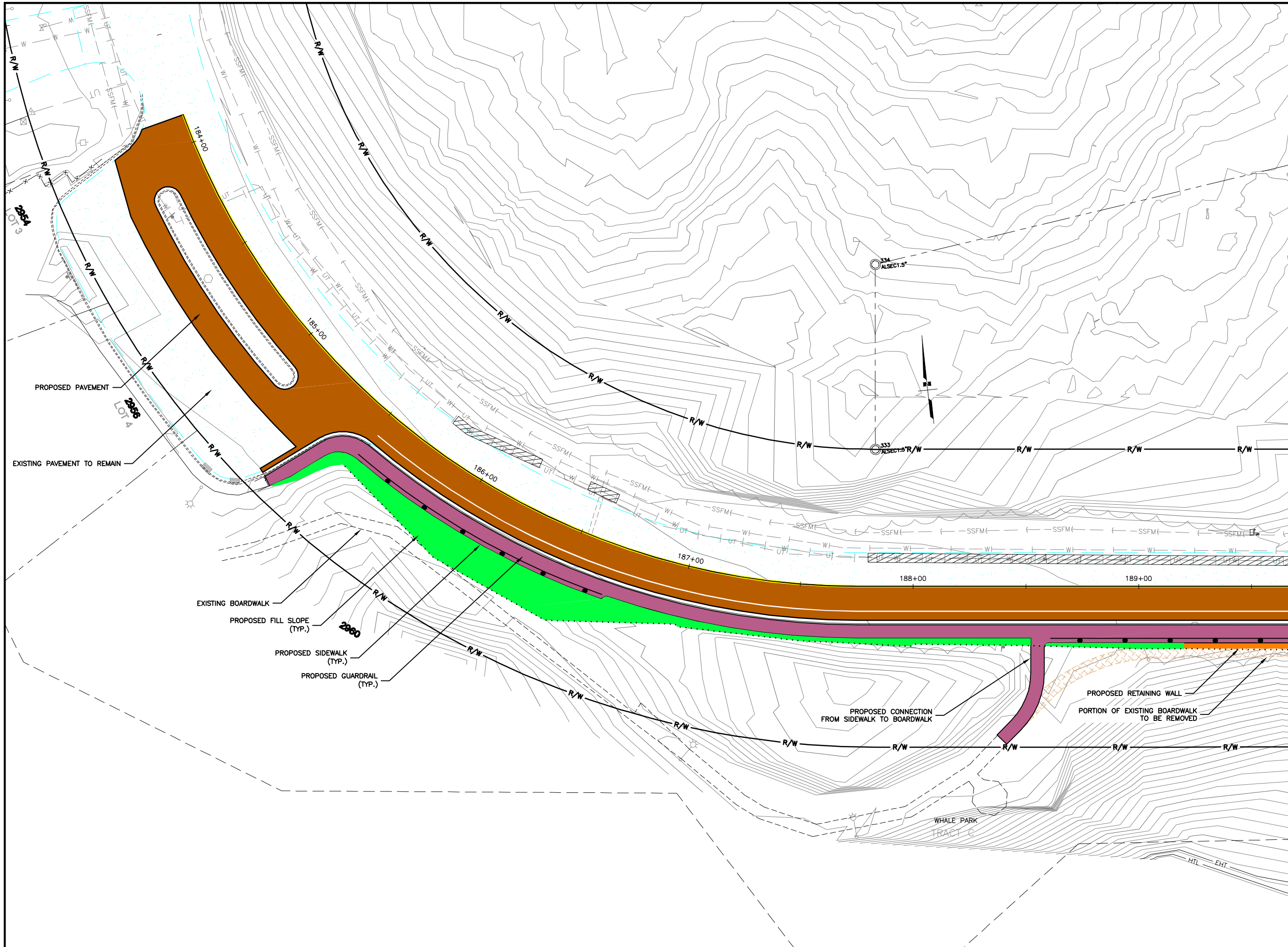
PREPARED BY: USKH  
 CHECKED BY: NCL  
 DESIGNED BY: KM, ZCS  
 DRAWN BY: WJP

STATE OF ALASKA  
 DEPARTMENT OF TRANSPORTATION  
 & PUBLIC FACILITIES  
 SOUTHEAST REGION

PROPOSED  
 ACTION  
 TYPICAL SECTION

FIGURE NUMBER

DO NOT SCALE FROM THESE DRAWINGS USE DIMENSIONS



PATH:  
 H:\1153805\DWG\SCS\COLOR\F01-F19  
 COLOR.DWG  
 Friday, November 19, 2010 2:04:08 PM  
 TAB: WHALE PARK

ADDENDUM NUMBER		
ATTACHMENT NUMBER		
RECORD OF REVISIONS		
No.	DATE	DESCRIPTION

SAWMILL CREEK ROAD PHASE III  
 WHALE PARK TO SAWMILL CREEK BRIDGE  
 68216

**ROADWAY PLAN & PROFILE**

PREPARED BY: USKH  
 CHECKED BY: NCL

**PROPOSED ACTION**

DESIGNED BY: NCL  
 DRAWN BY: WJP

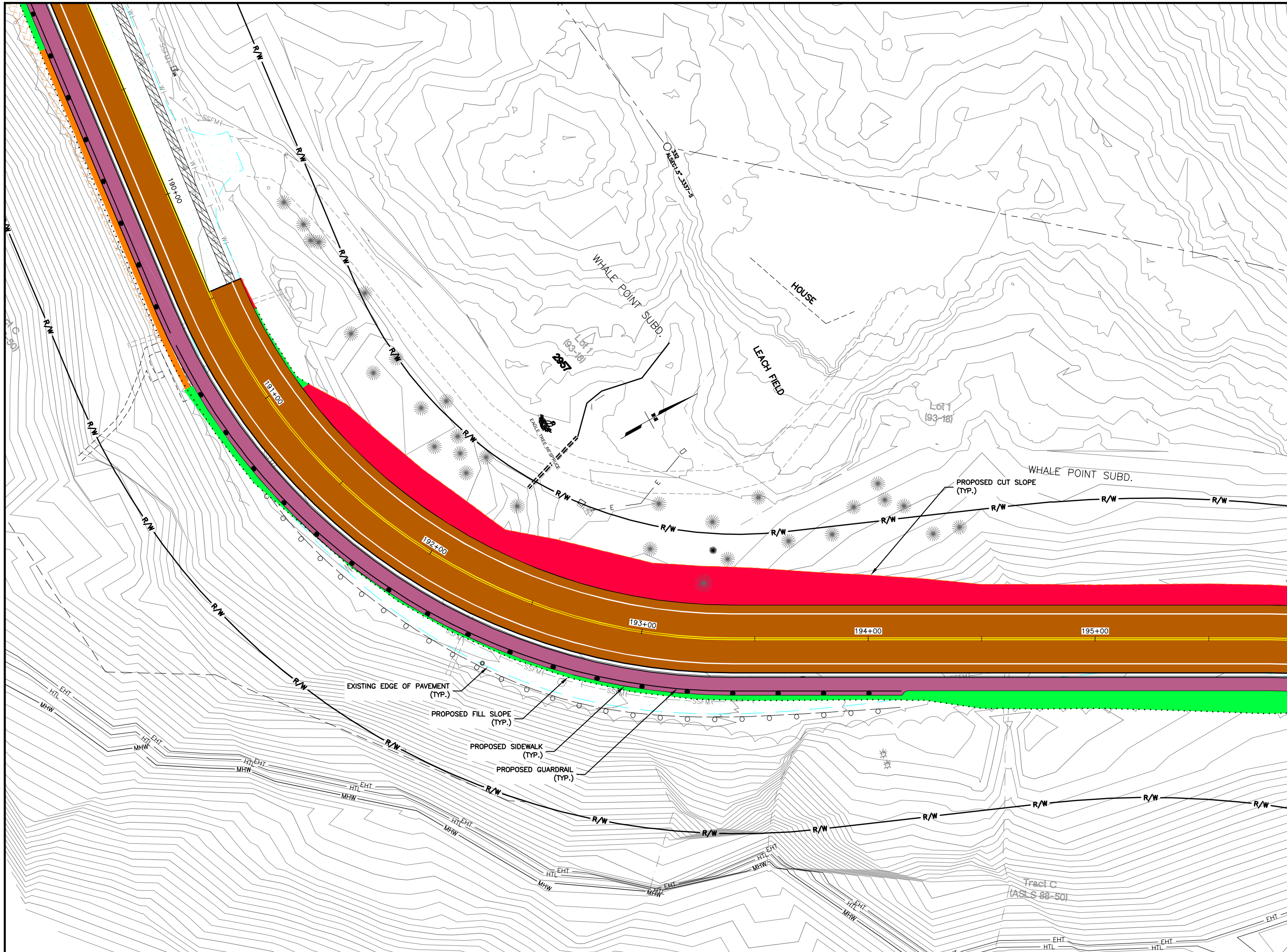
STATE OF ALASKA  
 DEPARTMENT OF TRANSPORTATION  
 & PUBLIC FACILITIES  
 SOUTHEAST REGION

**ROADWAY PLAN  
 & PROFILE  
 BOP TO  
 STA. 188+50**

PROJECT DESIGNATION  
**68216**

STATE	YEAR
<b>ALASKA</b>	<b>2010</b>

SHEET NUMBER	TOTAL SHEETS
<b>F0</b>	<b>XX</b>



PATH:  
 I:\1153805\DWG\S\C\SHEETS\COLOR\F01-F19  
 COLOR.DWG  
 Friday, November 19, 2010 2:18:04 PM  
 TAB: EAGLE TREE 1

ADDENDUM NUMBER		
ATTACHMENT NUMBER		
RECORD OF REVISIONS		
No.	DATE	DESCRIPTION

SAWMILL CREEK ROAD PHASE III  
 WHALE PARK TO SAWMILL CREEK BRIDGE  
 68216  
**ROADWAY PLAN & PROFILE**  
 PREPARED BY: USKH  
 CHECKED BY: NCL

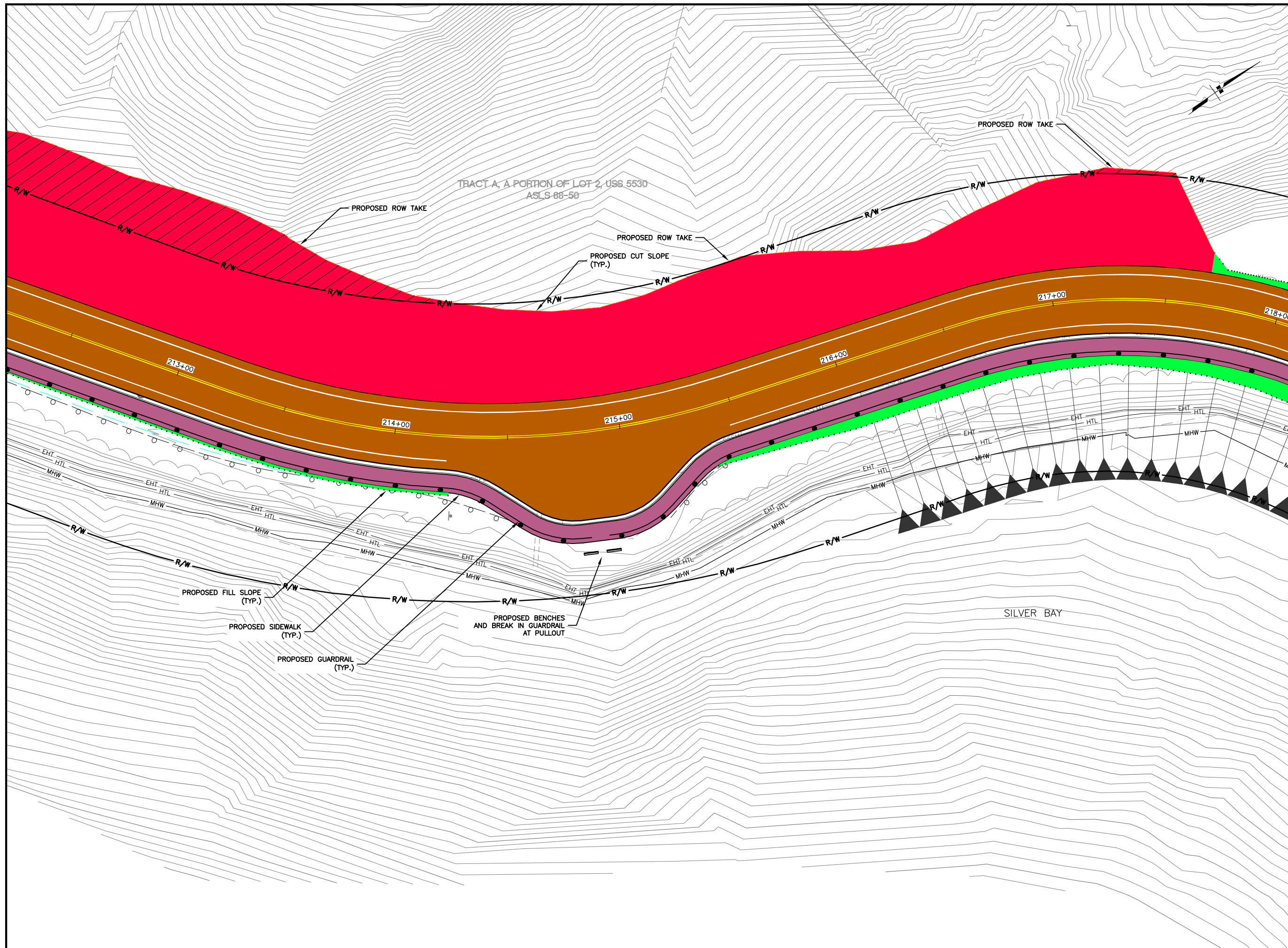
**PROPOSED ACTION**  
 DESIGNED BY: NCL  
 DRAWN BY: WJP

STATE OF ALASKA  
 DEPARTMENT OF TRANSPORTATION  
 & PUBLIC FACILITIES  
 SOUTHEAST REGION

**ROADWAY PLAN  
 & PROFILE  
 STA. 188+50 TO  
 STA. 193+50**

PROJECT DESIGNATION	
68216	
STATE	YEAR
ALASKA	2010
SHEET NUMBER	TOTAL SHEETS
F1	XX

ADDENDUM NUMBER		
ATTACHMENT NUMBER		
RECORD OF REVISIONS		
No.	DATE	DESCRIPTION



SAWMILL CREEK ROAD PHASE III  
 WHALE PARK TO SAWMILL CREEK BRIDGE  
 68216  
**ROADWAY PLAN & PROFILE**

PREPARED BY: USKH  
 CHECKED BY: NCL

PROPOSED ACTION

DESIGNED BY: NCL  
 DRAWN BY: WJP

STATE OF ALASKA  
 DEPARTMENT OF TRANSPORTATION  
 & PUBLIC FACILITIES  
 SOUTHEAST REGION

**ROADWAY PLAN  
 & PROFILE**  
**STA. 213+50 TO  
 STA. 218+50**

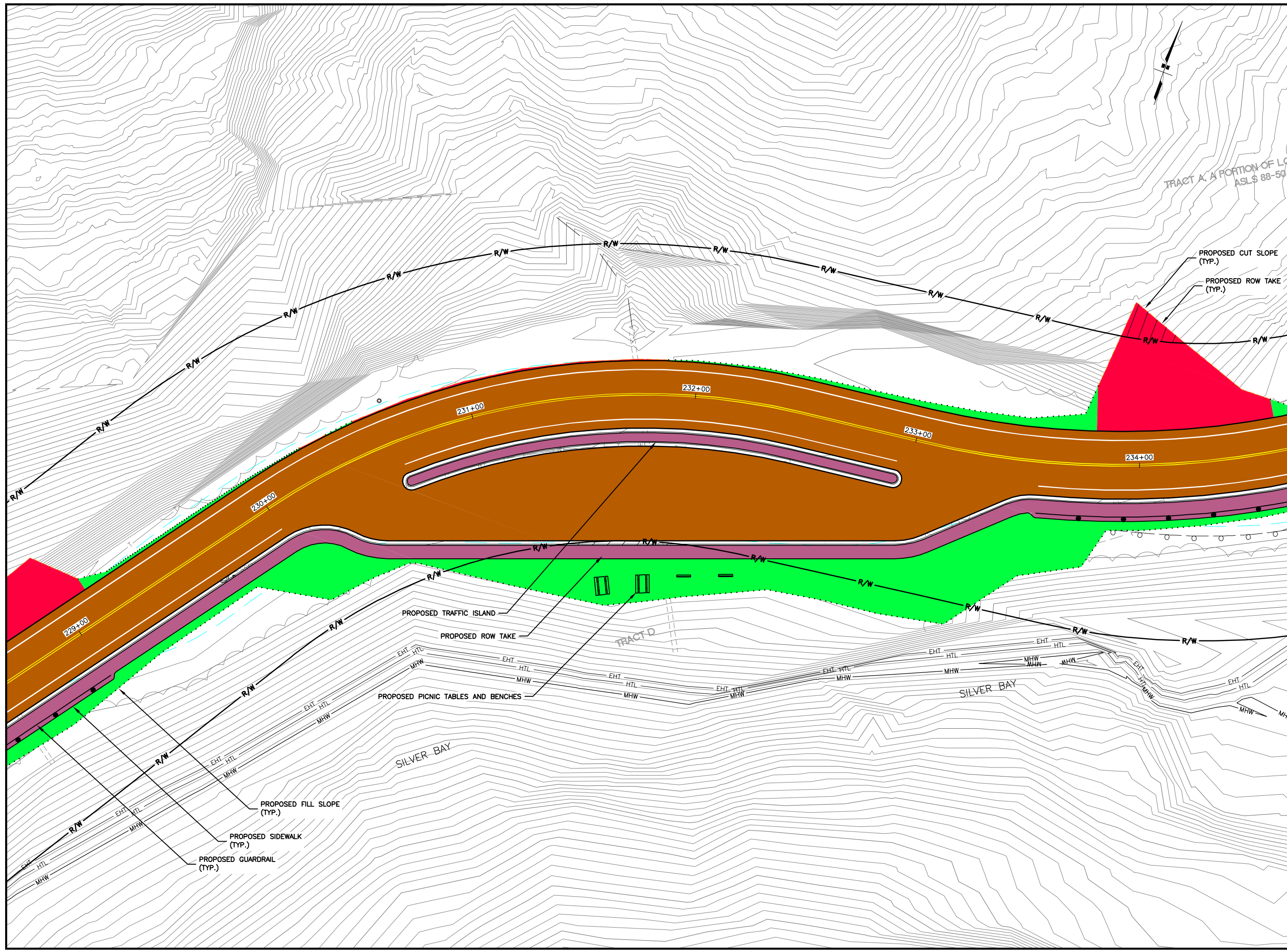
PROJECT DESIGNATION  
**68216**

STATE	YEAR
<b>ALASKA</b>	<b>2010</b>

SHEET NUMBER	TOTAL SHEETS
<b>F6</b>	<b>XX</b>

ADDENDUM NUMBER		
ATTACHMENT NUMBER		
RECORD OF REVISIONS		
No.	DATE	DESCRIPTION

SAWMILL CREEK ROAD PHASE III  
 WHALE PARK TO SAWMILL CREEK BRIDGE  
 68216  
**ROADWAY PLAN & PROFILE**



PREPARED BY: USKH  
 CHECKED BY: NCL

**PROPOSED ACTION**

DESIGNED BY: NCL  
 DRAWN BY: WJP

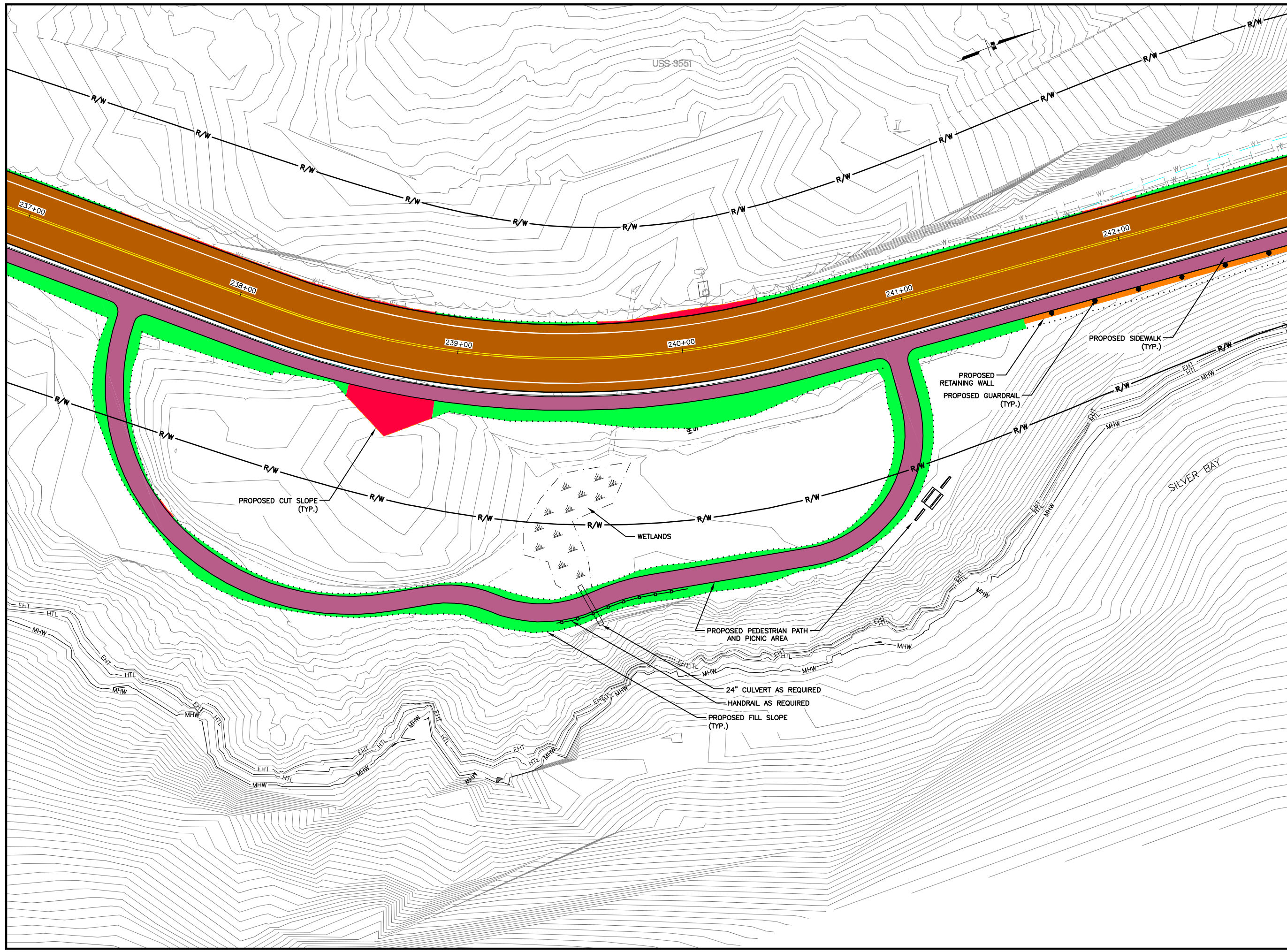
STATE OF ALASKA  
 DEPARTMENT OF TRANSPORTATION  
 & PUBLIC FACILITIES  
 SOUTHEAST REGION

**ROADWAY PLAN  
 & PROFILE  
 STA. 228+00 TO  
 STA. 233+00**

PROJECT DESIGNATION  
**68216**

STATE	YEAR
<b>ALASKA</b>	<b>2010</b>

SHEET NUMBER	TOTAL SHEETS
<b>F9</b>	<b>XX</b>



PATH:  
I:\1153805\DWG\CS\COLOR\F01-F19  
COLOR.DWG  
Monday, November 22, 2010 8:30:47 AM  
TAB: TRAIL LOOP

ADDENDUM NUMBER		
ATTACHMENT NUMBER		
RECORD OF REVISIONS		
No.	DATE	DESCRIPTION

SAWMILL CREEK ROAD PHASE III  
 WHALE PARK TO SAWMILL CREEK BRIDGE  
 68216

**ROADWAY PLAN & PROFILE**

PREPARED BY: USKH  
 CHECKED BY: NCL

PROPOSED ACTION

DESIGNED BY: NCL  
 DRAWN BY: WJP

STATE OF ALASKA  
 DEPARTMENT OF TRANSPORTATION  
 & PUBLIC FACILITIES  
 SOUTHEAST REGION

**ROADWAY PLAN  
& PROFILE**  
**STA. 238+00 TO  
STA. 243+00**

PROJECT DESIGNATION	
<b>68216</b>	
STATE	YEAR
<b>ALASKA</b>	<b>2010</b>
SHEET NUMBER	TOTAL SHEETS
<b>F11</b>	<b>XX</b>