

CERTIFICATE OF OWNERSHIP AND DEDICATION

WE HEREBY CERTIFY THAT WE ARE THE OWNERS OF THE PROPERTY SHOWN AND DESCRIBED HEREON AND THAT WE HEREBY ADOPT THIS PLAN OF SUBDIVISION WITH OUR FREE CONSENT AND DEDICATE ALL STREETS, ALLEYS, WALKS, PARKS AND OTHER OPEN SPACES TO PUBLIC OR PRIVATE USE AS NOTED.

DATE: 24 April 2009 *David H. O'Neill, President*
Sheldon Jackson College

DATE: _____ OWNER: _____

NOTARY'S ACKNOWLEDGMENT

US OF AMERICA
 STATE OF ALASKA
 CITY & BOROUGH OF SITKA

THIS IS TO CERTIFY THAT ON THIS 24 day of April, 2009, BEFORE ME, THE UNDERSIGNED, A NOTARY PUBLIC IN AND FOR THE STATE OF ALASKA, DULY COMMISSIONED AND SWORN, PERSONALLY APPEARED David H. O'Neill, President of Sheldon Jackson College.

TO ME KNOWN TO BE THE IDENTICAL INDIVIDUAL(S) MENTIONED AND WHO EXECUTED THE WITHIN PLAT AND he ACKNOWLEDGED TO ME THAT he SIGNED THE SAME FREELY AND VOLUNTARILY FOR THE USES AND PURPOSES THEREIN SPECIFIED.

WITNESS MY HAND AND NOTARY SEAL THE DAY AND YEAR IN THIS FIRST HEREIN WRITTEN.

David H. O'Neill
 NOTARY PUBLIC IN AND FOR THE STATE OF ALASKA
 MY COMMISSION EXPIRES 7/1/11



CERTIFICATE OF PAYMENT OF TAXES (STATE OF ALASKA) (FIRST JUDICIAL DISTRICT)

I, THE UNDERSIGNED, BEING DULY APPOINTED AND QUALIFIED, AND ASSESSOR FOR THE CITY & BOROUGH OF SITKA, DO HEREBY CERTIFY THAT ACCORDING TO THE RECORDS OF THE CITY & BOROUGH OF SITKA, THE FOLLOWING DESCRIBED PROPERTY IS CARRIED ON THE TAX RECORDS IN THE NAME OF Sheldon Jackson College.

AND THAT, ACCORDING TO THE RECORDS IN MY POSSESSION, ALL TAXES ASSESSED AGAINST SAID LANDS AND IN FAVOR OF THE CITY & BOROUGH OF SITKA ARE PAID IN FULL, THAT CURRENT TAXES FOR THE YEAR 2008 WILL BE DUE ON OR BEFORE August 31, 2009.

DATED THIS 20 day of April, 2009, AT SITKA, ALASKA.

James A. Borak
 ASSESSOR, CITY AND BOROUGH OF SITKA

CERTIFICATE OF APPROVAL BY THE BOARD

I HEREBY CERTIFY THAT THE SUBDIVISION PLAT SHOWN HEREIN HAS BEEN FOUND TO COMPLY WITH THE SUBDIVISION REGULATIONS OF THE CITY & BOROUGH OF SITKA PLANNING BOARD, AND THAT SAID PLAT HAS BEEN APPROVED BY THE BOARD BY PLAT RESOLUTION NO. P208-11, DATED 4/17/2009, AND THAT THE PLAT SHOWN HEREIN HAS BEEN APPROVED FOR RECORDING IN THE OFFICE OF THE DISTRICT MAGISTRATE, EX-OFFICIO RECORDER, SITKA, ALASKA.

DATE: 4/17/2009 *Shelley L. In*
 DISTRICT MAGISTRATE, SITKA, ALASKA

Melissa Tomahan
 SECRETARY

CERTIFICATE OF APPROVAL BY THE ASSEMBLY

I HEREBY CERTIFY THAT THE SUBDIVISION PLAT SHOWN HEREIN HAS BEEN FOUND TO COMPLY WITH THE SUBDIVISION REGULATIONS OF THE CITY & BOROUGH OF SITKA ASSEMBLY AS RECORDED IN MINUTE BOOK _____ PAGE _____ DATED _____ AND THAT THE PLAT SHOWN HEREIN HAS BEEN APPROVED FOR RECORDING IN THE OFFICE OF THE DISTRICT COURT, EX-OFFICIO RECORDER, SITKA, ALASKA.

DATE: 4/15/2009 *Steve*
 CITY AND BOROUGH CLERK



CERTIFICATE OF PAYMENT OF LOCAL IMPROVEMENT DISTRICT

I, THE UNDERSIGNED, BEING DULY APPOINTED AND QUALIFIED, AND FINANCE DIRECTOR FOR THE CITY & BOROUGH OF SITKA, DO HEREBY CERTIFY THAT, ACCORDING TO THE RECORDS OF THE CITY & BOROUGH OF SITKA, THE FOLLOWING DESCRIBED PROPERTY IS CARRIED ON THE RECORDS IN THE NAME OF Sheldon Jackson College.

CALL OWNERS OF RECORD, AND THAT ACCORDING TO THE RECORDS IN MY POSSESSION, ALL L.L.V.'S ASSESSED AGAINST SAID LANDS AND IN FAVOR OF THE CITY & BOROUGH OF SITKA ARE PAID IN FULL.

DATED THIS 15 day of April, 2009, AT SITKA, ALASKA.

David H. O'Neill
 FINANCE DIRECTOR, CITY & BOROUGH OF SITKA

O'NEILL SURVEYING AND ENGINEERING

BOX 1849 SITKA, ALASKA 99835
 PHONE: (907) 747-6700
 FAX: (907) 747-7590
 EMAIL: oellieng@aol.net

BY	DATE	REV	DESCRIPTION OF CHANGE

RECORD OF REVISIONS



DESIGNED: D. O'NEILL
 DRAWN: COL/CH/CAB
 CHECKED: EMJ
 DATE OF PLAT: APRIL 8, 2009 # 110301
 SCALE: 1" = 100'
 DRAWING NAME: 30665-03D
 PROJECT NO.: 30665-03-00

SURVEYOR'S CERTIFICATE

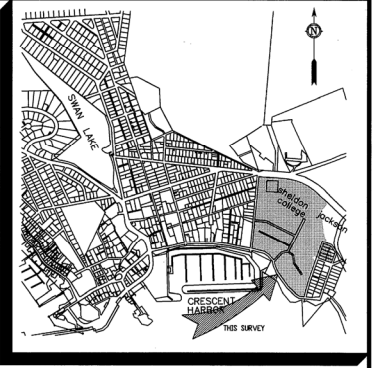
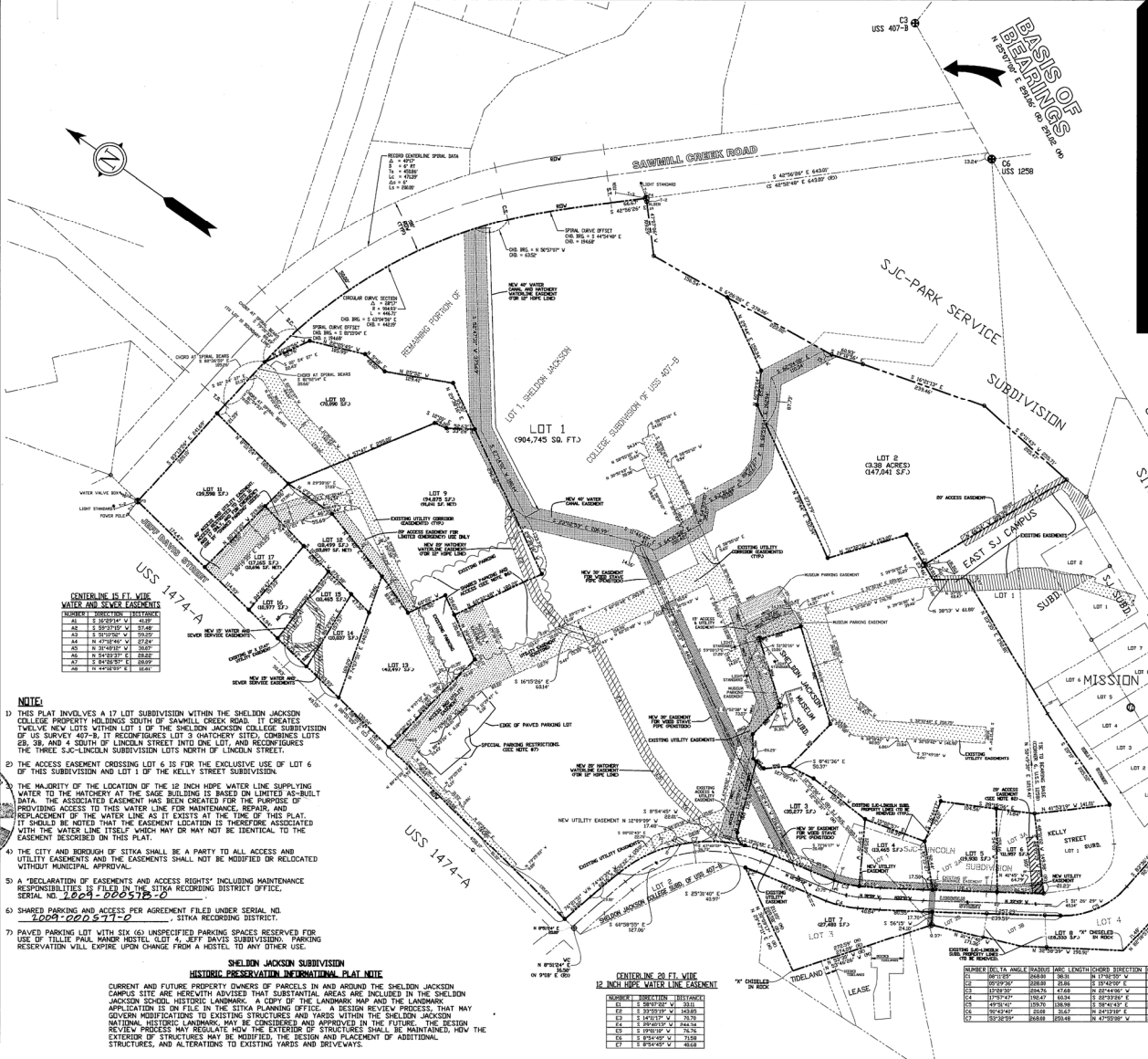
I HEREBY CERTIFY THAT I AM A REGISTERED SURVEYOR, LICENSED IN THE STATE OF ALASKA, AND THAT IN Feb. 2008 A SURVEY OF THE HEREIN DESCRIBED LANDS WAS CONDUCTED UNDER MY DIRECT SUPERVISION AND THAT THIS PLAT IS A TRUE AND ACCURATE REPRESENTATION OF THE FIELD NOTES OF SAID SURVEY, AND THAT ALL DIMENSIONS AND OTHER DETAILS ARE CORRECT ACCORDING TO SAID FIELD NOTES.

DATE: 4/15/09 *David H. O'Neill*
 PATRICK K. O'NEILL L.S. 6304

SHELDON JACKSON CAMPUS SUBDIVISION

LOTS 3 AND 4 OF THE SHELDON JACKSON COLLEGE SUBDIVISION OF U.S.S. 407-B (PLAT # 2008-8), THE REMAINING PORTION OF LOT 1 OF THE SHELDON JACKSON COLLEGE SUBDIVISION OF U.S.S. 407-B AS SHOWN ON THE EAST SJ CAMPUS SUBDIVISION (PLAT # 2008-28), AND LOTS 1, 2A, 2B, 3A, AND 3B OF THE SJC-LINCOLN SUBDIVISION (PLAT # 2008-9).

CLIENT: SHELDON JACKSON COLLEGE



VICINITY MAP
 SCALE 1"=1,000'

LEGEND

- PRIMARY CONTROL MONUMENT (RECOVERED)
- PRIMARY CONTROL MONUMENT (SET)
- GLD/BLM PRIMARY BASS CAP (RECOVERED)
- SECONDARY MONUMENT (SET)
- SECONDARY MONUMENT (RECOVERED)
- RECORDED DATA
- COMPUTED DATA
- MEASURED DATA

REFERENCE DATA FOR SET PRIMARY MONUMENTS

LINE	BY THE 1/2 SECTION	STARTING	REFERENCE POINT	BEARING	DISTANCE
1	12-14 20'00" E	382	MUSEUM BUILDING CORNER	12-14 20'00" E	382
2	12-14 20'00" E	382	MUSEUM BUILDING CORNER	12-14 20'00" E	382
3	12-14 20'00" E	382	WATER VALVE BOX	12-14 20'00" E	382
4	12-14 20'00" E	382	WATER VALVE BOX	12-14 20'00" E	382
5	12-14 20'00" E	382	WATER VALVE BOX	12-14 20'00" E	382
6	12-14 20'00" E	382	WATER VALVE BOX	12-14 20'00" E	382
7	12-14 20'00" E	382	WATER VALVE BOX	12-14 20'00" E	382
8	12-14 20'00" E	382	WATER VALVE BOX	12-14 20'00" E	382
9	12-14 20'00" E	382	WATER VALVE BOX	12-14 20'00" E	382
10	12-14 20'00" E	382	WATER VALVE BOX	12-14 20'00" E	382
11	12-14 20'00" E	382	WATER VALVE BOX	12-14 20'00" E	382
12	12-14 20'00" E	382	WATER VALVE BOX	12-14 20'00" E	382
13	12-14 20'00" E	382	WATER VALVE BOX	12-14 20'00" E	382
14	12-14 20'00" E	382	WATER VALVE BOX	12-14 20'00" E	382
15	12-14 20'00" E	382	WATER VALVE BOX	12-14 20'00" E	382
16	12-14 20'00" E	382	WATER VALVE BOX	12-14 20'00" E	382
17	12-14 20'00" E	382	WATER VALVE BOX	12-14 20'00" E	382
18	12-14 20'00" E	382	WATER VALVE BOX	12-14 20'00" E	382
19	12-14 20'00" E	382	WATER VALVE BOX	12-14 20'00" E	382
20	12-14 20'00" E	382	WATER VALVE BOX	12-14 20'00" E	382

SHELDON JACKSON COLLEGE SUBDIVISION (AND ASSN. EASEMENTS)

NUMBER	BEARING	DISTANCE	STARTING	REFERENCE POINT	BEARING	DISTANCE
1	12-14 20'00" E	382	12-14 20'00" E	382	12-14 20'00" E	382
2	12-14 20'00" E	382	12-14 20'00" E	382	12-14 20'00" E	382
3	12-14 20'00" E	382	12-14 20'00" E	382	12-14 20'00" E	382
4	12-14 20'00" E	382	12-14 20'00" E	382	12-14 20'00" E	382
5	12-14 20'00" E	382	12-14 20'00" E	382	12-14 20'00" E	382
6	12-14 20'00" E	382	12-14 20'00" E	382	12-14 20'00" E	382
7	12-14 20'00" E	382	12-14 20'00" E	382	12-14 20'00" E	382
8	12-14 20'00" E	382	12-14 20'00" E	382	12-14 20'00" E	382
9	12-14 20'00" E	382	12-14 20'00" E	382	12-14 20'00" E	382
10	12-14 20'00" E	382	12-14 20'00" E	382	12-14 20'00" E	382
11	12-14 20'00" E	382	12-14 20'00" E	382	12-14 20'00" E	382
12	12-14 20'00" E	382	12-14 20'00" E	382	12-14 20'00" E	382
13	12-14 20'00" E	382	12-14 20'00" E	382	12-14 20'00" E	382
14	12-14 20'00" E	382	12-14 20'00" E	382	12-14 20'00" E	382
15	12-14 20'00" E	382	12-14 20'00" E	382	12-14 20'00" E	382
16	12-14 20'00" E	382	12-14 20'00" E	382	12-14 20'00" E	382
17	12-14 20'00" E	382	12-14 20'00" E	382	12-14 20'00" E	382
18	12-14 20'00" E	382	12-14 20'00" E	382	12-14 20'00" E	382
19	12-14 20'00" E	382	12-14 20'00" E	382	12-14 20'00" E	382
20	12-14 20'00" E	382	12-14 20'00" E	382	12-14 20'00" E	382

DATE: 4-27-09
 TIME: 11:42 AM
 RECORDS BY: CSB

SCALE IN FEET
 Sitka Recording District