

# CBS Asset Management Program Briefing

City & Borough of Sitka  
Asset Management Program

06/28/2022



# Presentation Outline

---

## Goals:

Highlight Program progress to-date and outline future initiatives, projects, and tasks



What is Asset Management for CBS?



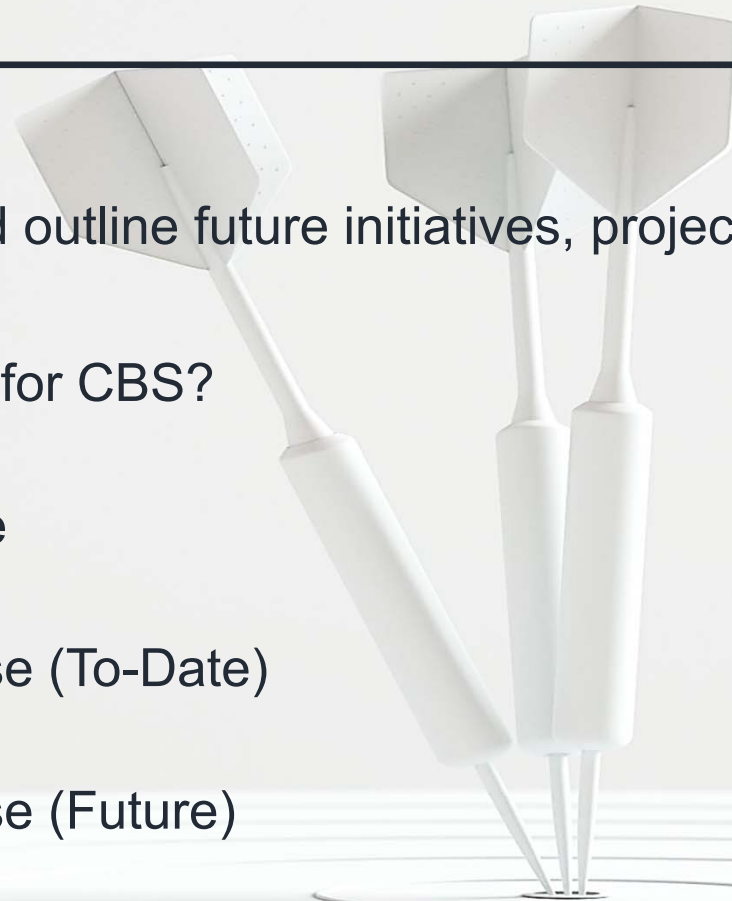
Overview of Planning Phase



Overview of Execution Phase (To-Date)



Overview of Execution Phase (Future)

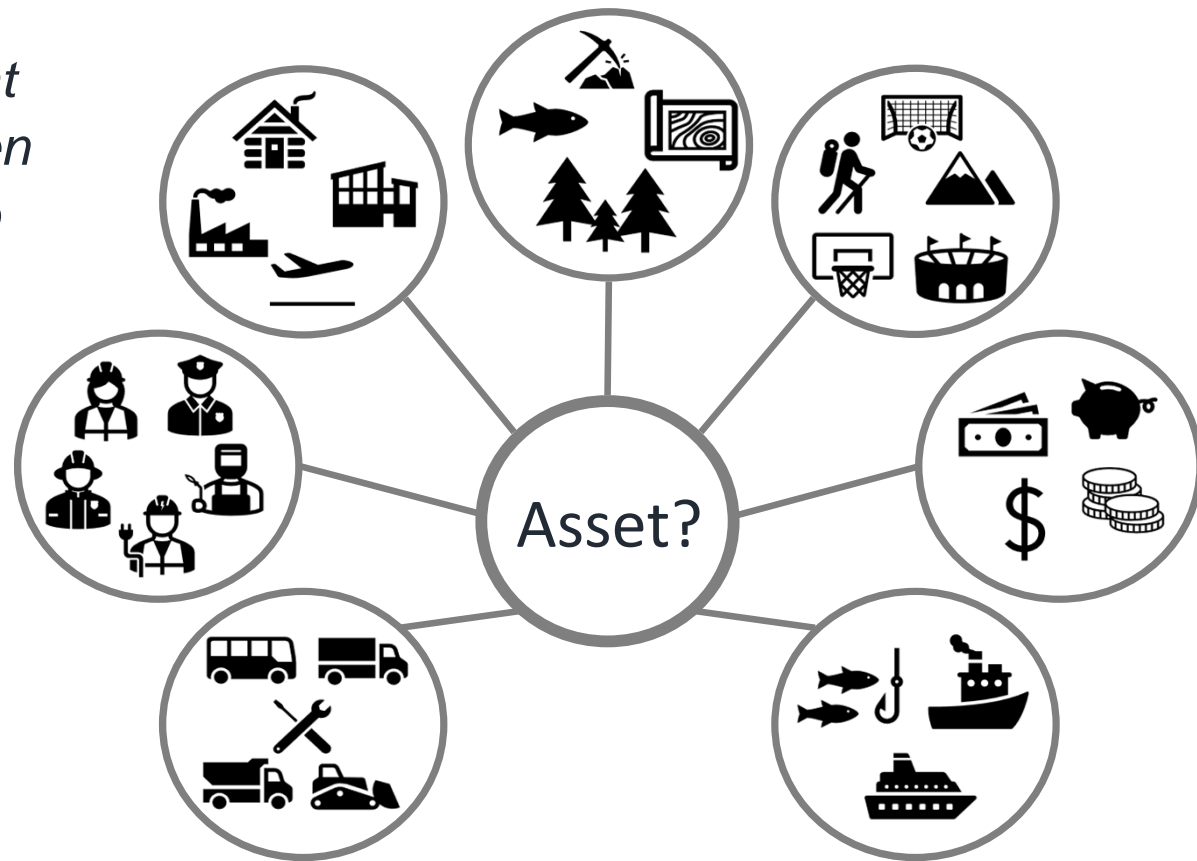


# Defining “Asset Management”

# Defining “Asset Management”

---

**Asset Management is...**  
*managing assets in a way that optimizes the balance between risk, cost, and performance to bring the best value to our community.*



# Defining “Asset Management”

---

## Asset Management Utilizes Best Practice Guidance:



ISO 55000, 55001, 55002 Standard for Asset Management



ISO 31000 Standard for Risk Management



IIMM – International Infrastructure Management Manual



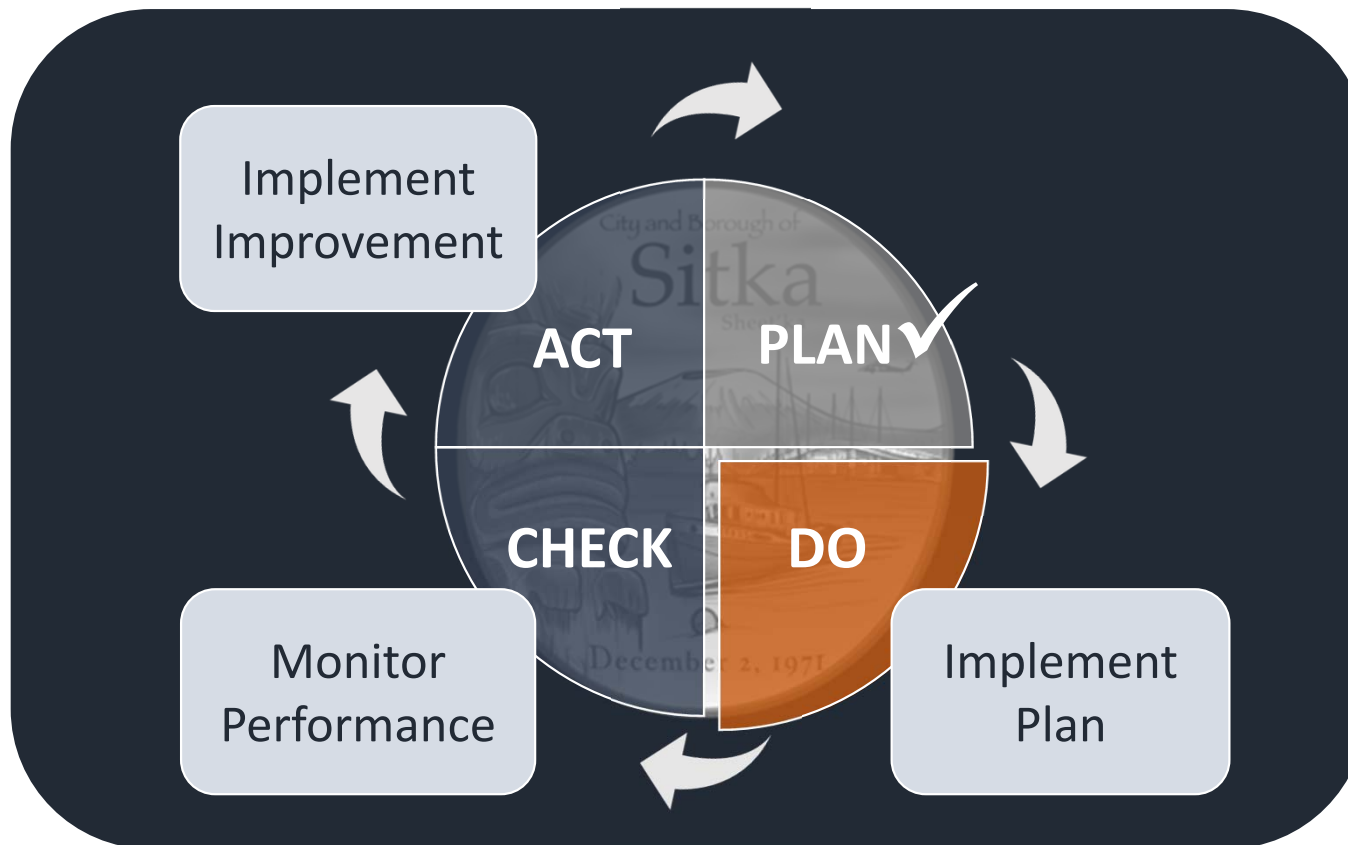
IAM – Institute of Asset Management



American Public Works Association – Public Works Management Practices

# Defining “Asset Management” – PDCA Cycle

---



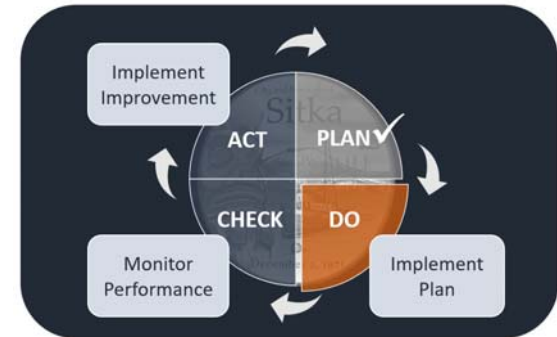
# Defining “Asset Management”

---

☐ Phase I – Planning

☐ Phase II – Execution

☐ Phase III – Monitoring and Continual Improvement



# Planning Phase Overview

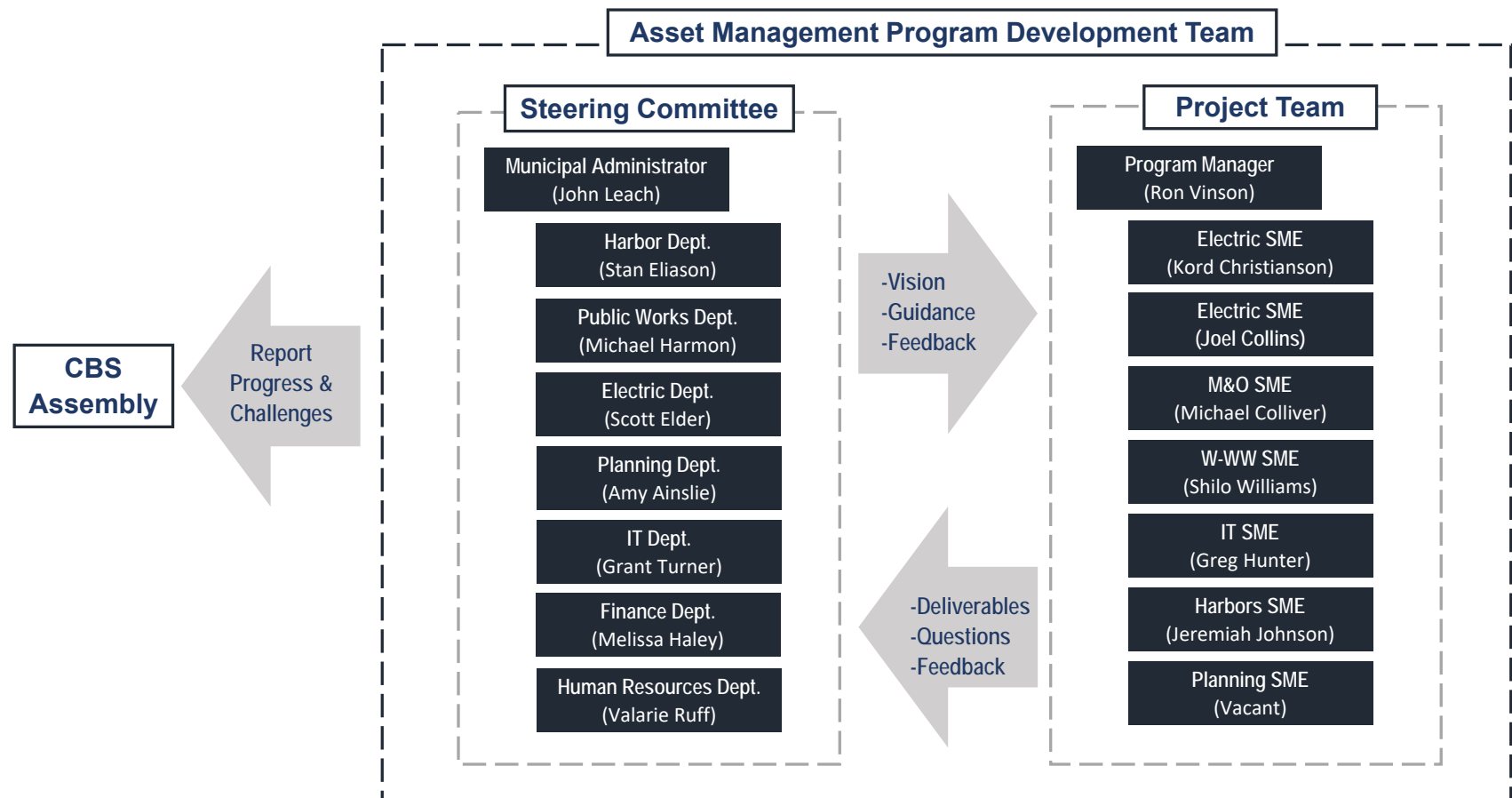


# Planning Phase Overview

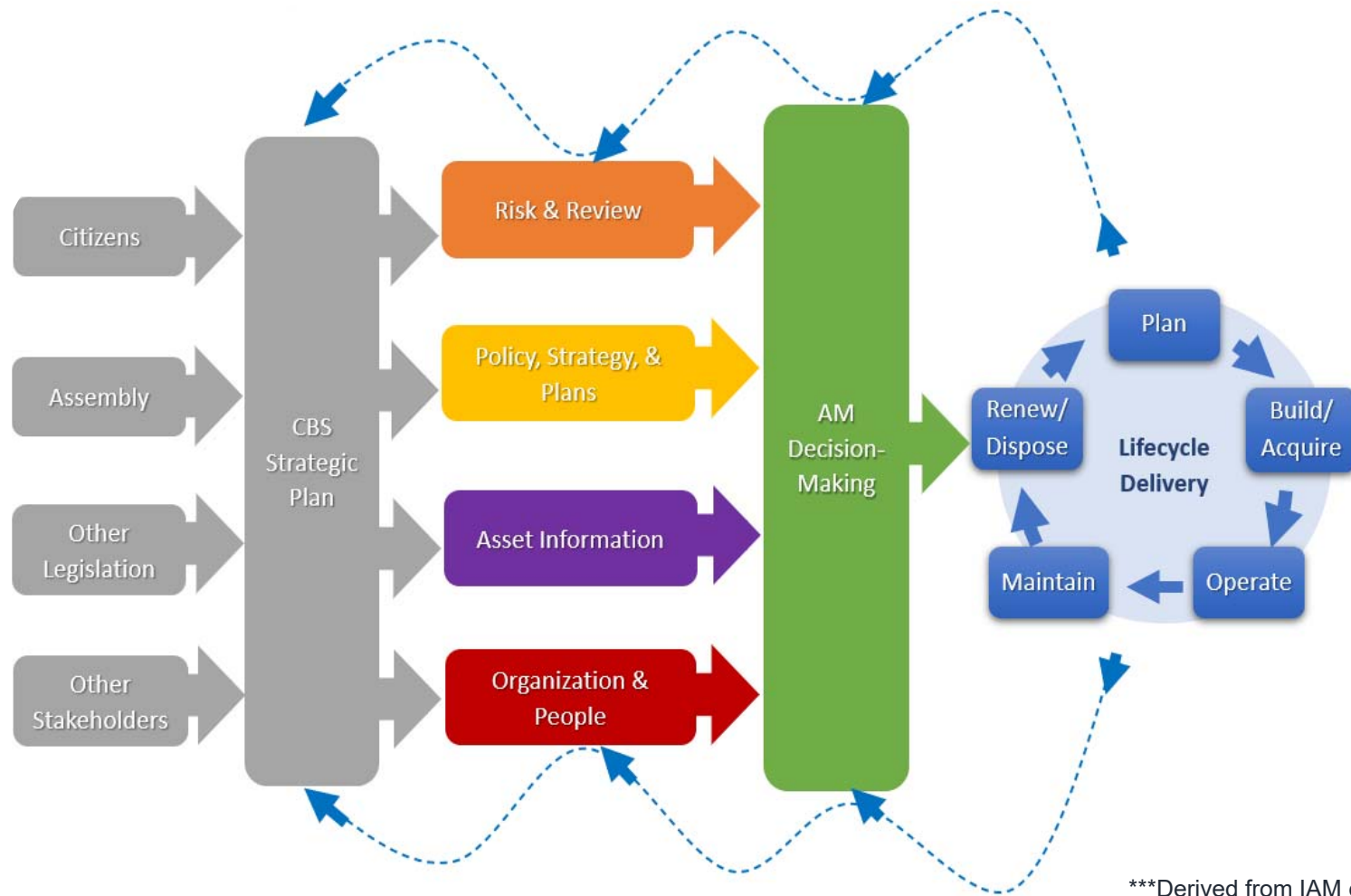
AM Program Development - Phase I (Planning)												
Task Description	2021				2022							
	Nov.	Dec.	Jan.	Feb.	March	April						
✓ AM Kickoff	■											
✓ Program Charter		■	■	■								
✓ Info. Mgmt. Policy/Strategy				■	■	■	■	■	■			
✓ Maturity Assessment					■	■	■					
✓ Implementation Plan							■	■	■	■	■	
Strategic Planning (non-AM)					■	■	■	■	■	■	■	■

■ Completed AM Task

# Defining “Asset Management” – Communication



# CBS Asset Management System



\*\*\*Derived from IAM conceptual AM model

# AM System Subject Area Groups

## Group 1 – Strategy & Planning

1. Asset Management Policy
2. Asset Management Strategy & Objectives
3. Demand Analysis
4. Strategic Planning
5. Asset Management Planning

## Group 2 – AM Decision-Making

6. Capital Investment Decision Making
7. Operations & Maintenance Decision Making
8. Life Cycle Value Realization
9. Resourcing Strategy
10. Shutdowns & Outage Strategy

## Group 3 – Lifecycle Delivery

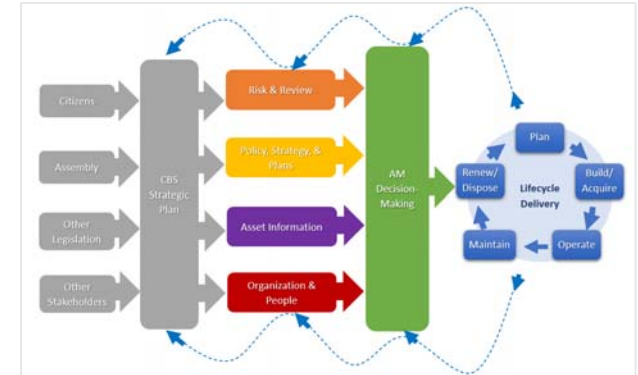
11. Technical Standards & Legislation
12. Asset Creation & Acquisition
13. Systems Engineering
14. Configuration Management
15. Maintenance Delivery
16. Reliability Engineering
17. Asset Operations
18. Resource Management
19. Shutdown and Outage Management
20. Fault & Incident Response
21. Asset Decommissioning and disposal

## Group 4 – Asset Information

22. Asset Information Strategy
23. Asset Information Management
24. Asset Information Systems
25. Data & Information

## Group 5 – Organization & People

26. Procurement & Supply Chain Management
27. Asset Information Leadership
28. Organizational Structure
29. Organizational Culture
30. Competence Management



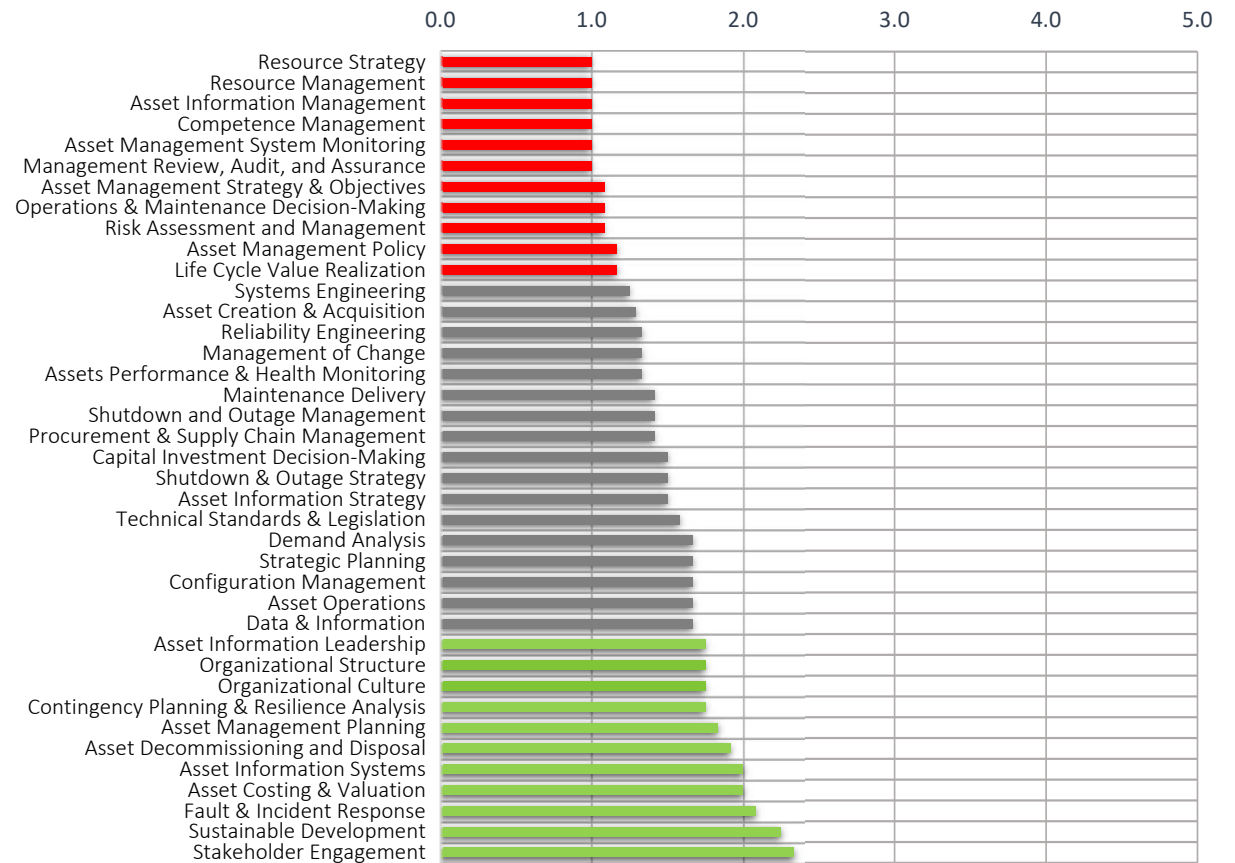
## Group 6 – Risk & Review

31. Risk Assessment and Management
32. Contingency Planning & Resilience Analysis
33. Sustainable Development
34. Management of Change
35. Assets Performance & Health Monitoring
36. Asset Management System Monitoring
37. Management Review, Audit, and Assurance
38. Asset Costing & Valuation
39. Stakeholder Engagement

# Maturity Assessment Summary

Deficiencies	Resource Strategy	1.0	
	Resource Management	1.0	
	Asset Information Management	1.0	
	Competence Management	1.0	
	Asset Management System Monitoring	1.0	
	AM Review, Audit, and Assurance	1.0	
	Asset Management Strategy & Objectives	1.1	
	Operations & Maintenance Decision-Making	1.1	
	Risk Assessment and Management	1.1	
	Asset Management Policy	1.2	
	Lifecycle Value Realization	1.2	
	Strengths	Asset Management Leadership	1.8
		Organizational Structure	1.8
Organizational Culture		1.8	
Contingency Planning & Resilience Analysis		1.8	
Asset Management Planning		1.8	
Asset Decommissioning and Disposal		1.9	
Asset Information Systems		2.0	
Asset Costing & Valuation		2.0	
Fault & Incident Response		2.1	
Sustainable Development		2.3	
Stakeholder Engagement		2.3	

2022 AM Maturity Assessment







# Execution Phase Overview (To-Date)



# Execution Phase Overview (To Date)

AM Program Development - Phase II (Execution)											
Initiative Description	2022										
	April		May		June		July		August		September
✓ #1 – AM Policy											
✓ #2 – Stakeholder Engagement											
#3 – Information Management											
#6 – Resource Management											
#7 – Capital Planning											
#13 – Project Management											
#17 – Procurement & Disposal											



Completed AM Task



Upcoming AM Task

# Execution Phase Overview (Future)





**Questions?**

# Program Development To-Date

