

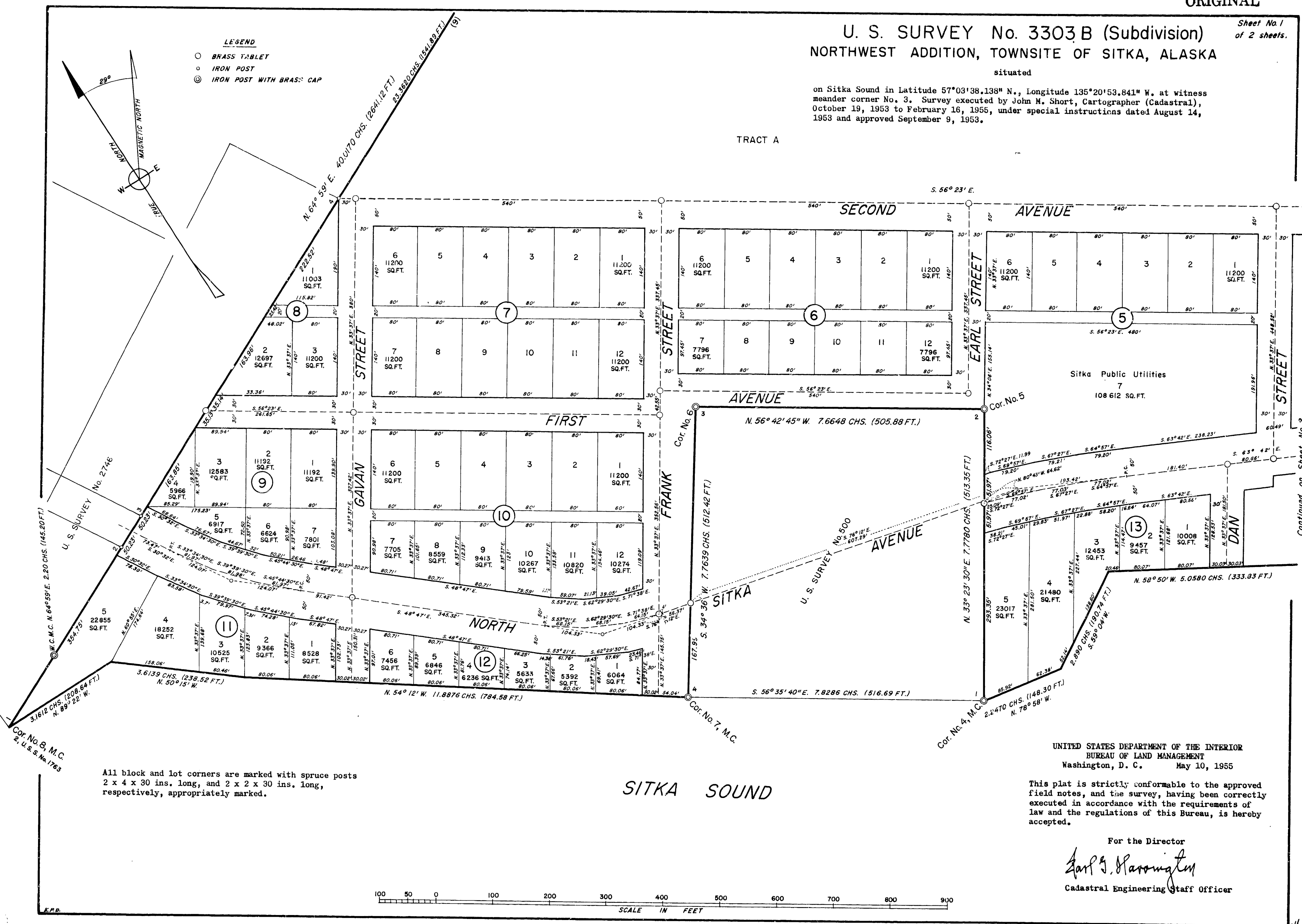
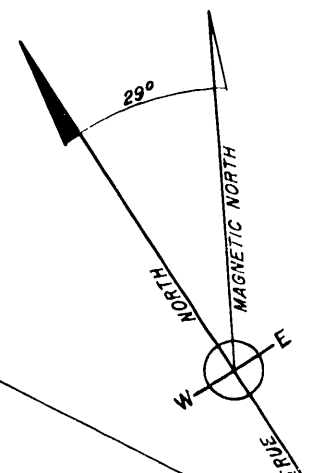
U. S. SURVEY No. 3303 B (Subdivision) NORTHWEST ADDITION, TOWNSITE OF SITKA, ALASKA

situated

on Sitka Sound in Latitude 57°03'38.138" N., Longitude 135°20'53.841" W. at witness meander corner No. 3. Survey executed by John M. Short, Cartographer (Cadastral), October 19, 1953 to February 16, 1955, under special instructions dated August 14, 1953 and approved September 9, 1953.

TRACT A

- LEGEND**
- BRASS TABLET
 - IRON POST
 - ⊙ IRON POST WITH BRASS CAP



Continued on Sheet No. 2

All block and lot corners are marked with spruce posts 2 x 4 x 30 ins. long, and 2 x 2 x 30 ins. long, respectively, appropriately marked.

SITKA SOUND

UNITED STATES DEPARTMENT OF THE INTERIOR
BUREAU OF LAND MANAGEMENT
Washington, D. C. May 10, 1955

This plat is strictly conformable to the approved field notes, and the survey, having been correctly executed in accordance with the requirements of law and the regulations of this Bureau, is hereby accepted.

For the Director

Earl G. Harrington

Cadastral Engineering Staff Officer

