

Southeast Alaska Regional Health Consortium
Mt. Edgecumbe Medical Center
Exterior Wayfinding System

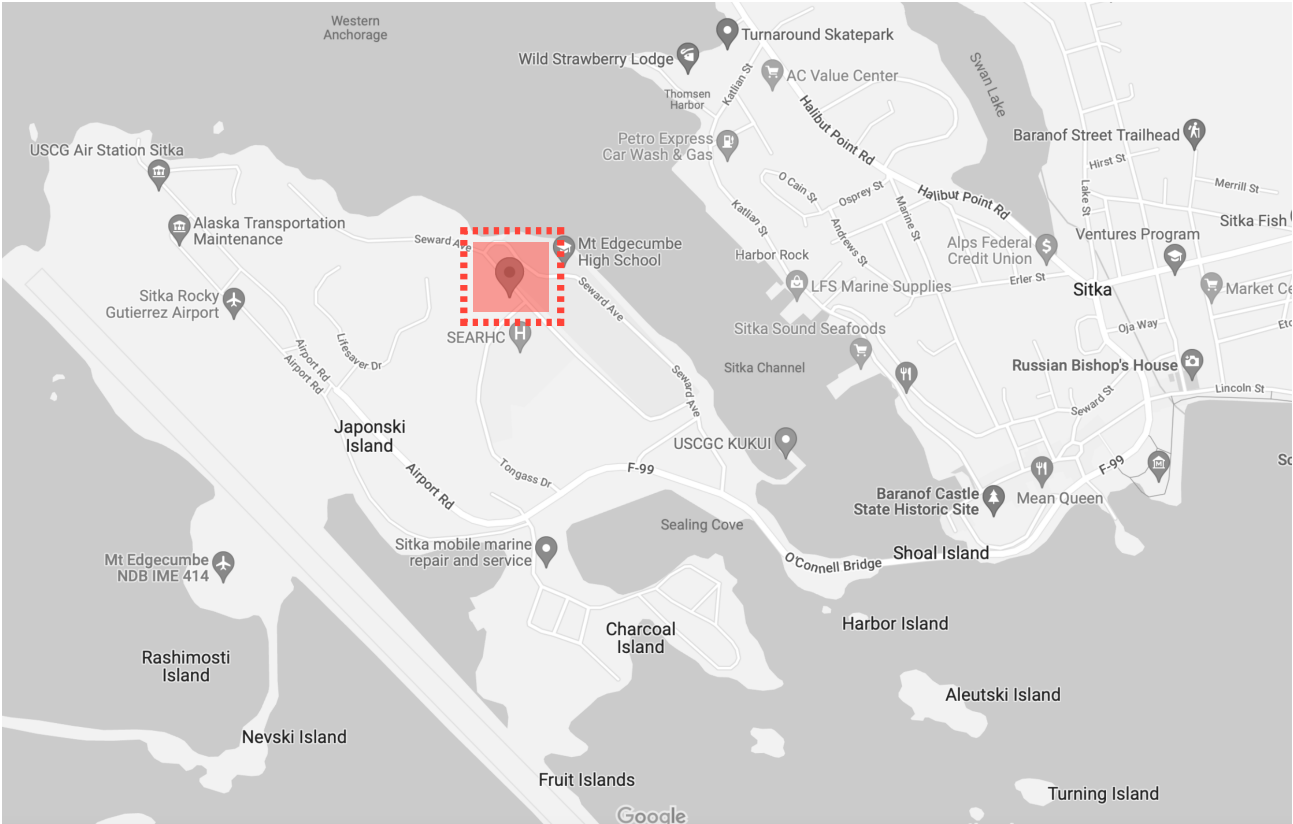
City and Borough of Sitka,
Signage Variance Document

Project Number: 102562.80
April 5, 2023

nbbj

Project Address

227 Tongass Dr.
Sitka, AK 99835



Project Team

Designer
NBBJ
223 Yale Avenue North
Seattle, WA 98109

Eric LeVine
Principal in Charge
e: elevine@nbbj.com
t: 206.233.5176

Cari P. Scotkin
Project Manager
e: cscotkin@nbbj.com
t: 206.223.5218

Yusuke Ito
Designer
e: yito@nbbj.com
t: 206.223.2350

Architect
NBBJ
223 Yale Avenue North
Seattle, WA 98109

Chuck Kolb, LEED AP
Principal in Charge | Architect
e: ckolb@nbbj.com
t: 206.223.5009
m: 206.390.5009

Craig Matheny, RA
Project Architect
e: cmatheny@nbbj.com
t: 206.621.2259

Owner
SEARHC
3100 Channel Drive
Suite #300
Juneau, AK 99801

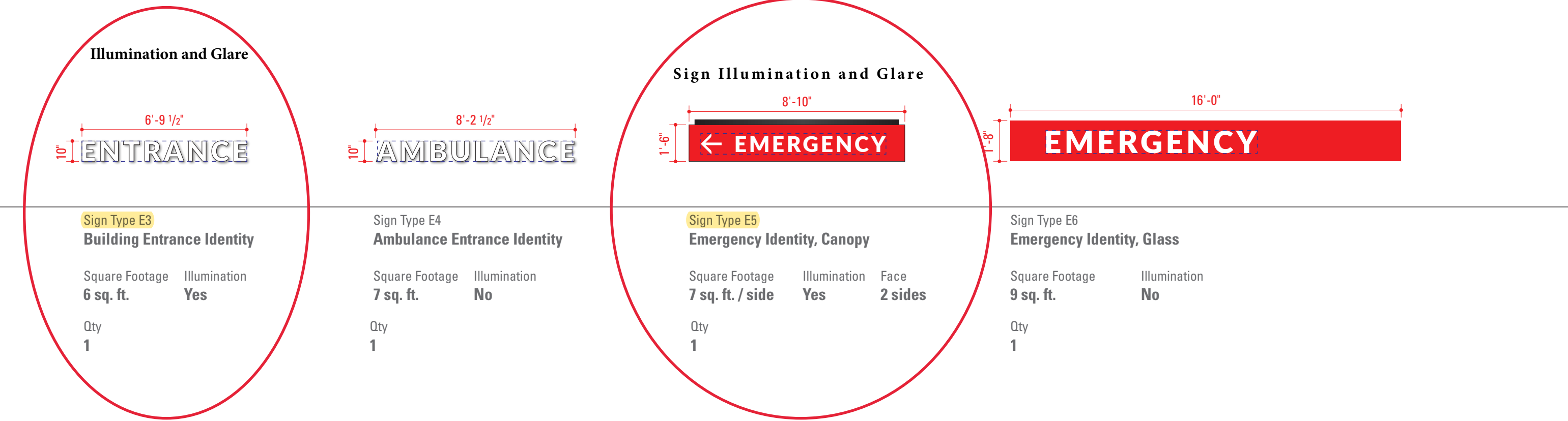
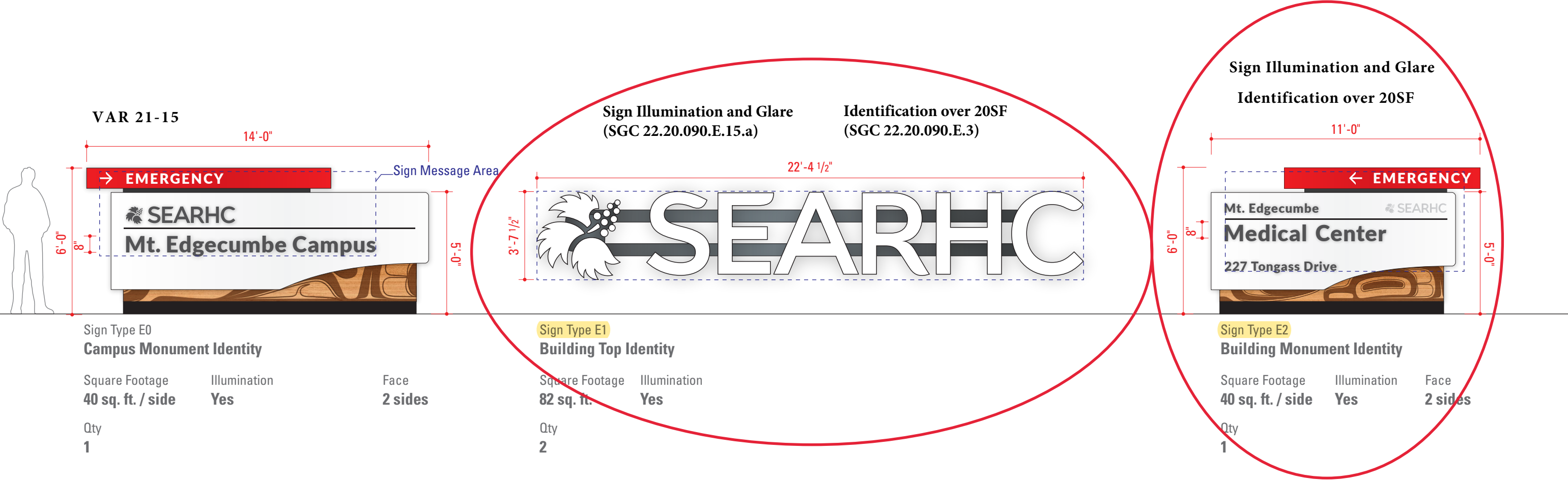
Leatha Merculieff
Senior Vice President &
Chief Operating Officer
e: leatham@searhc.org
t: 907.463.6624
m: 907.317.8836

Heidi Aylsworth
Senior Vice President/
Chief Strategy &
Business Development Officer
e: heidia@searhc.org
t: 907.966.8833

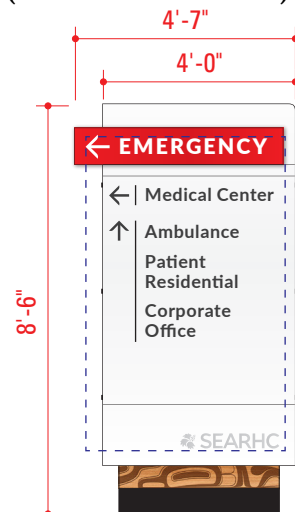
General Contractor
ASKW Davis
6591 A St #300
Anchorage, AK 99518

James Murrell LEED® AP
Project Manager
e: james@davisconstructors.com
o: 907.562.2336
m: 907.947.1717

Project Information



Directional signs over 6 SF
(SGC 22.20.090.E.14)



Square Footage	Illumination	Face
28 sq. ft. / side	Yes	2 sides
Qty		
2		

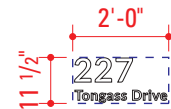
Diagram illustrating the dimensions and content of two signs:

- Left Sign Dimensions:** 4'-0" wide, 6'-6" high.
- Left Sign Content:**
 - Top section (Red background): **EMERGENCY DROP-OFF** (with a right arrow icon).
 - Bottom section (White background):
 - Top: **Main Entrance Drop-Off + Pick-Up** (with a right arrow icon).
 - Bottom: **Patient and Visitor Parking** (with a left arrow icon).
- Right Sign Dimensions:** 4'-0" wide, 6'-6" high.
- Right Sign Content:** **Patient and Visitor Parking** (Large black text).

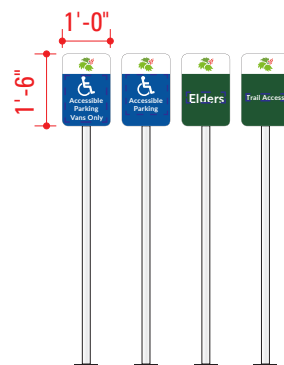
Both signs feature the **SEARHC** logo at the bottom.

Square Footage 17 sq. ft. / side	Illumination Yes	Face 2 sides
Qty 5		

Sign Type E9, E10, E11 – Not Used



Square Footage	Illumination
2 sq. ft.	No
Qty	
4	

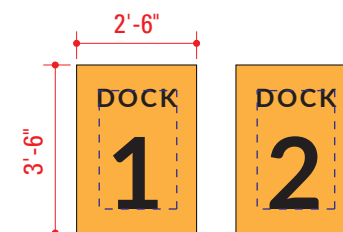


Square Footage **1 sq. ft.** Illumination **No**

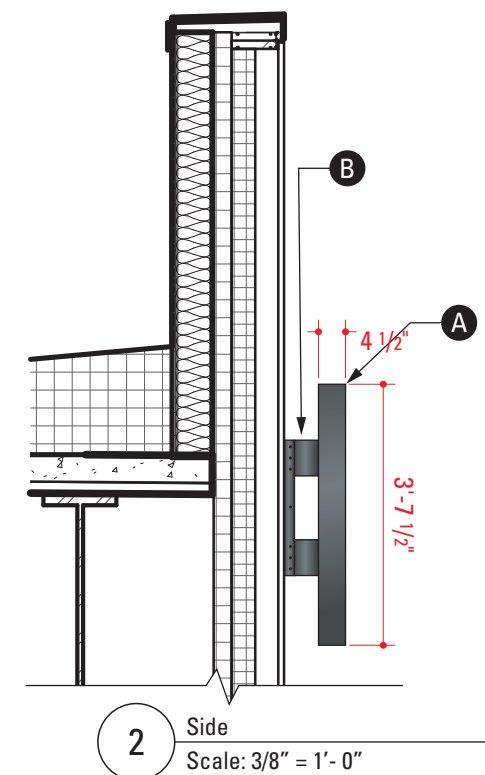
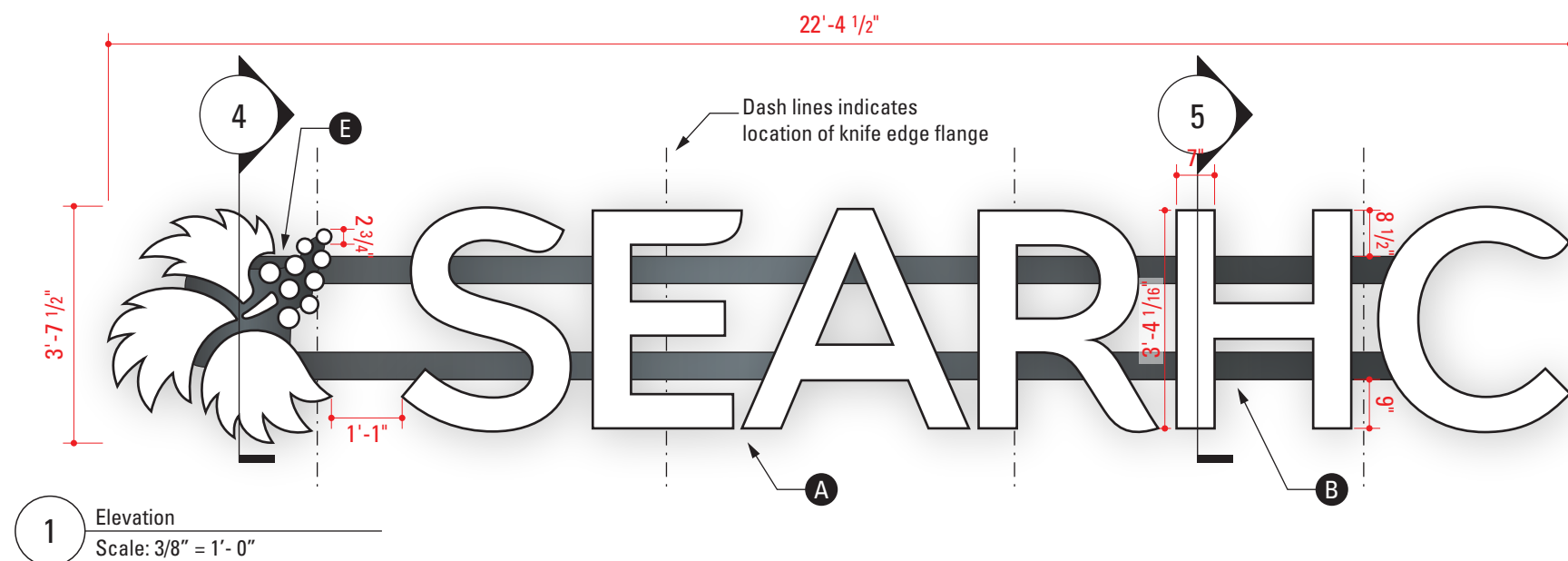
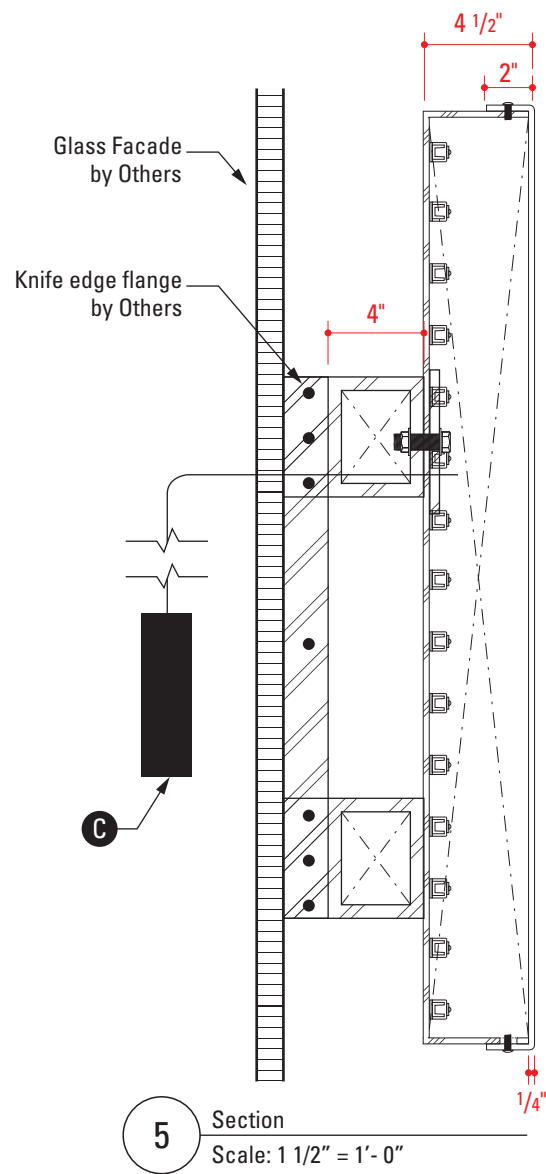
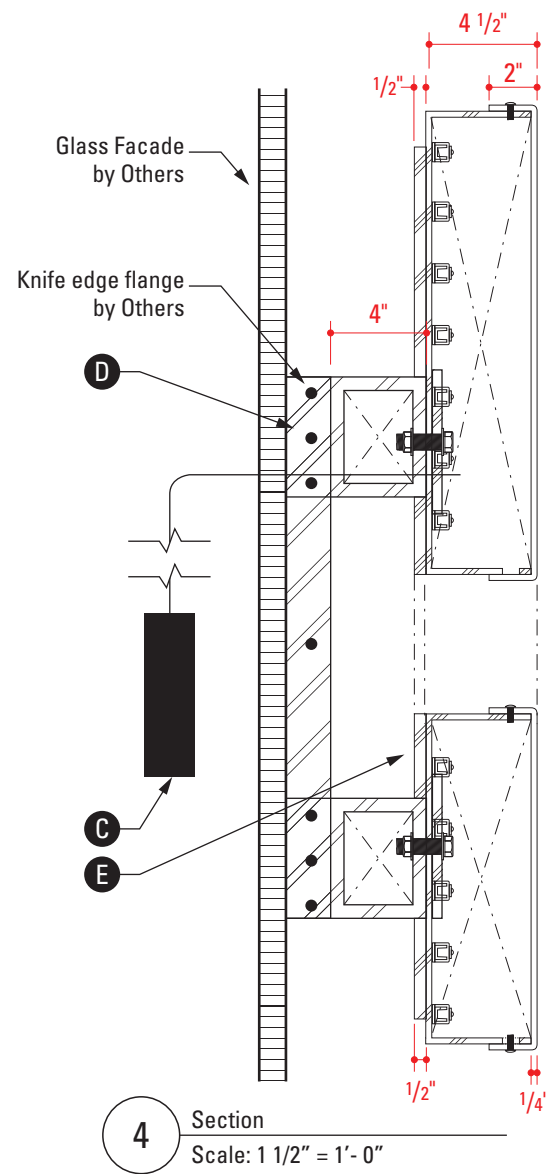
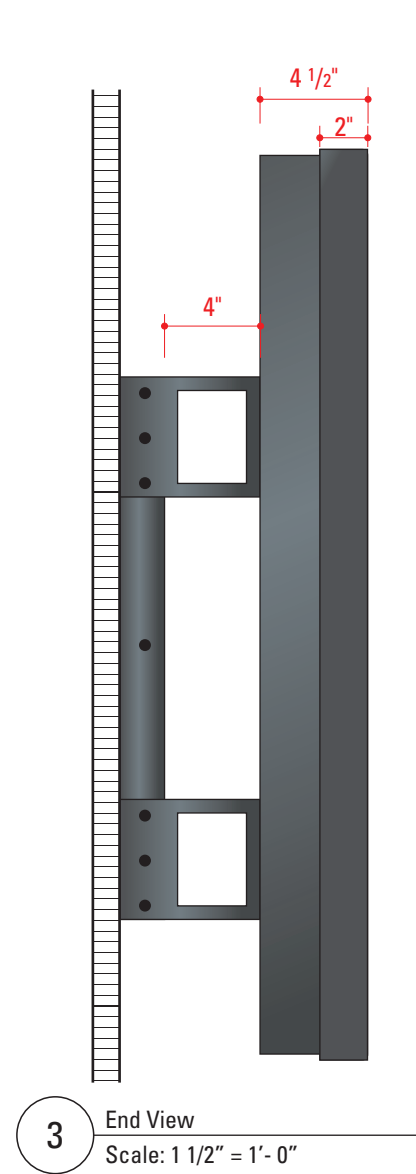
Qty **27**

Diagram illustrating the layout of two side-by-side signs. The signs are 3'-0" wide and 5'-0" high. The left sign is labeled "Service Vehicles Only" and the right sign is labeled "Staff Parking". Both signs feature a left-pointing arrow at the top.

Square Footage	Illumination	Face
9 sq. ft. / side	No	2 sides
Qty		
2		



Square Footage	Illumination
4 sq. ft.	No
Qty	
2	



Fabrication Notes

- A** Logo is fabricated aluminum face-lit channel letters. Face: Formed white translucent polycarbonate attached at return surface. Returns: Painted to match (including polycarbonate returns and fasteners) MP19970 Blue Slate Metallic. White LED temperature: 4,500K.
- B** 6"x6"x 1/2" aluminum mounting raceway painted to match MP19970 Blue Slate Metallic.
- C** Power transformer. Location TBD by G.C./Fabricator.
- D** 1/2" plate aluminum flange welded to raceway, bolted to "knife edge" flange.
- E** 1/2" aluminum backing plate for logomark painted to match MP19970 Blue Slate Metallic.

General Notes

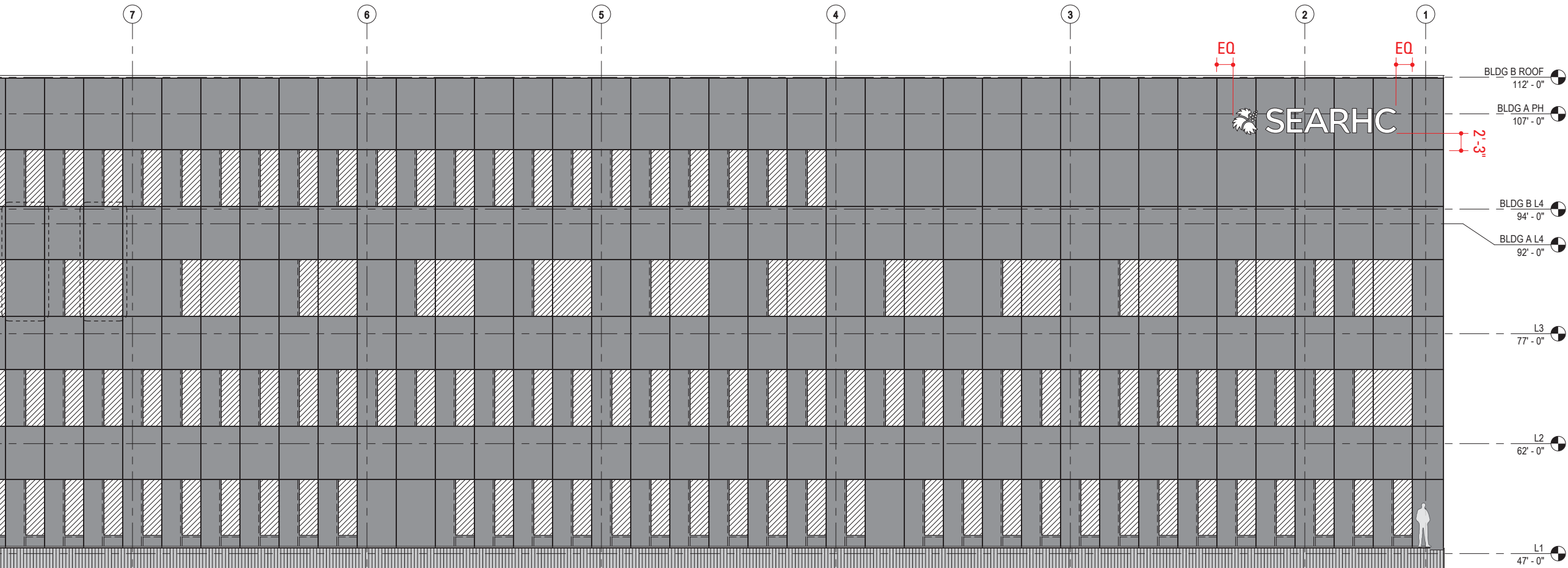
Fabricator to field verify mounting conditions prior to fabrication.

Fabricator to provide shop drawing for review and approval by Designer.

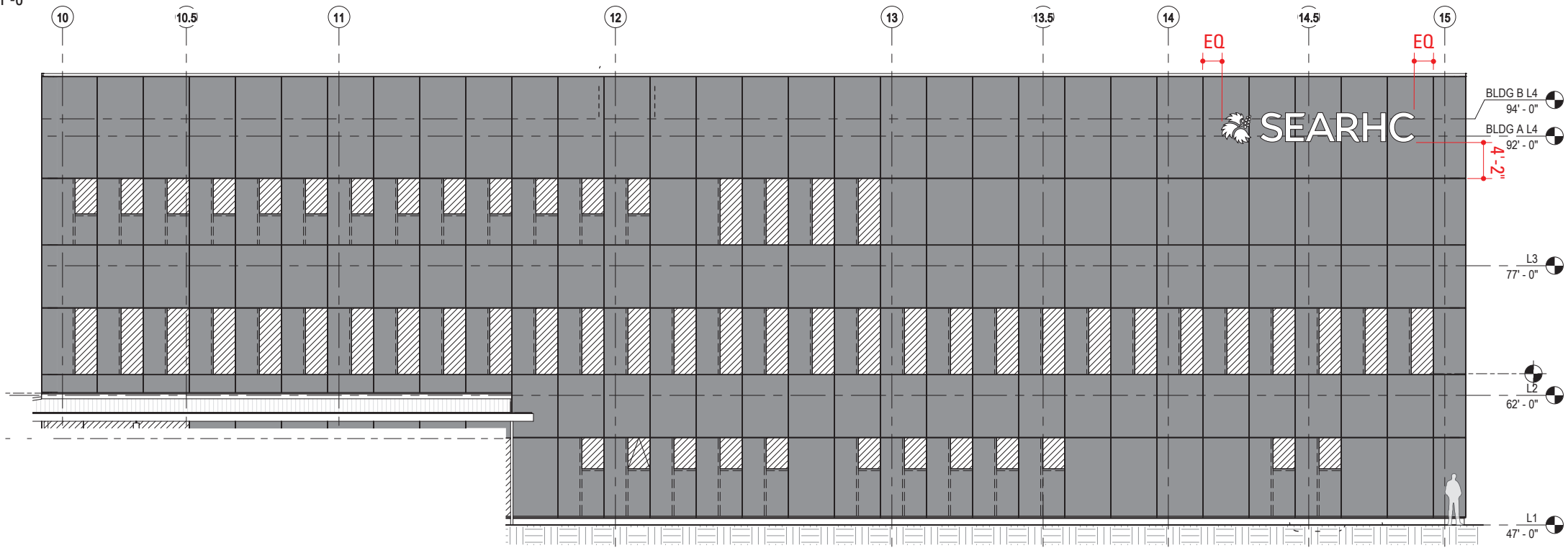
Building Top Identity on metal standoffs to be coordinated with glazed framing system joints.

Sample/Mock-ups

Fully functioning letter "R" and logomark with mounting raceway. May be used for installation if approved.



1 Contextual Plan – Enlarged Building A CW North
Scale: 1/16" = 1'-0"



1 Contextual Plan – Enlarged Building B CW South
Scale: 1/16" = 1'-0"

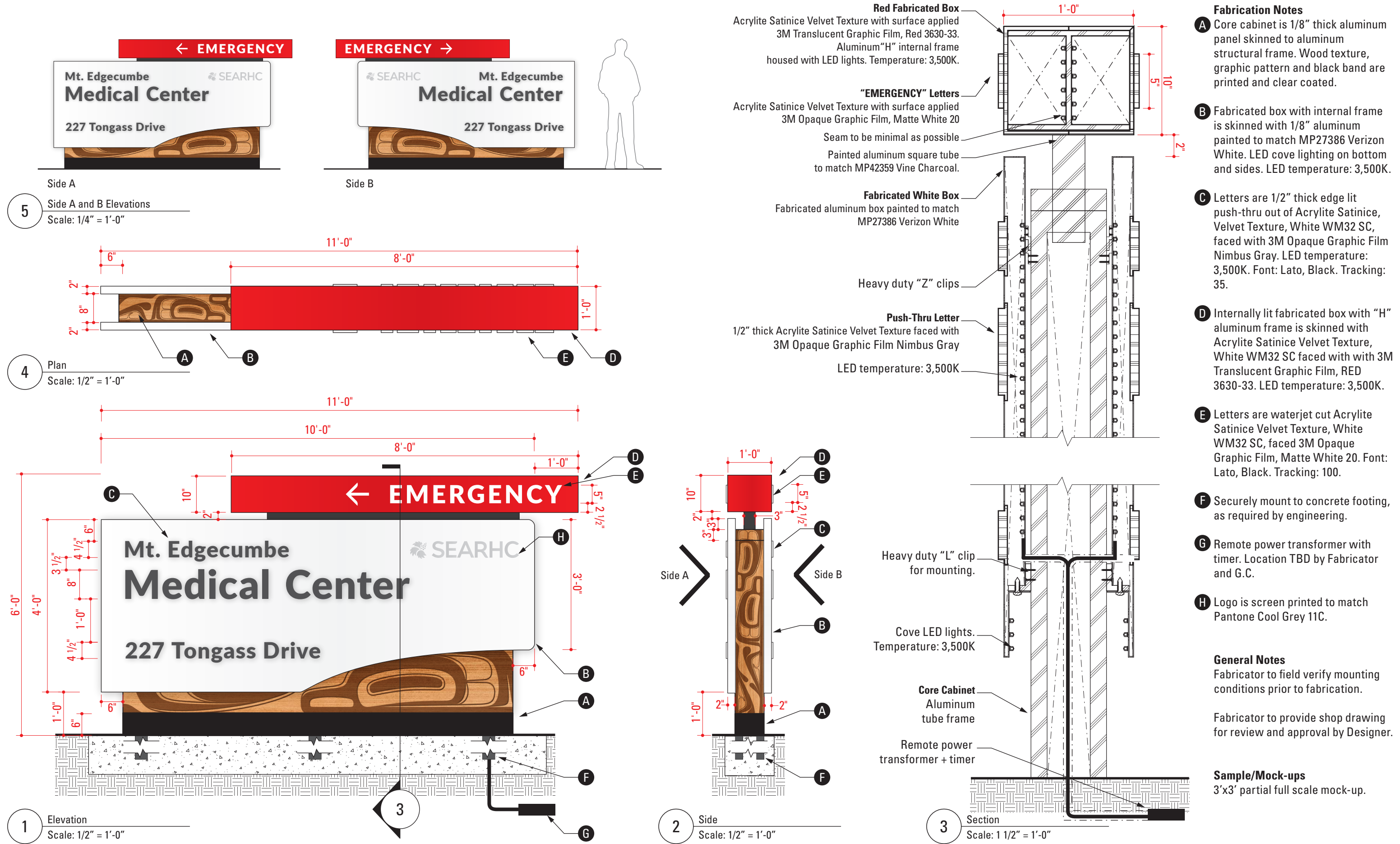
General Notes
Fabricator to field verify mounting conditions prior to fabrication.

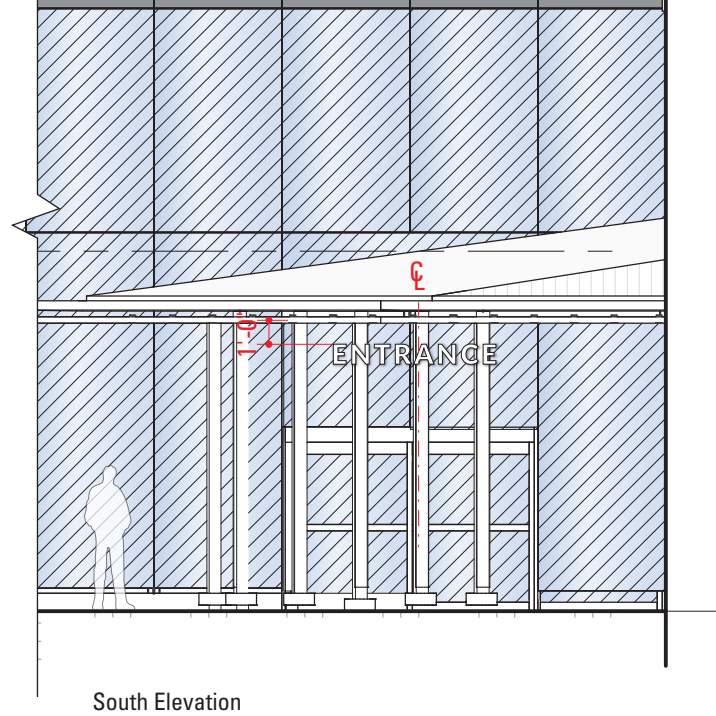
Fabricator to provide shop drawing for review and approval by Designer.

Building Top Identity on metal standoffs to be coordinated with glazed framing system joints.

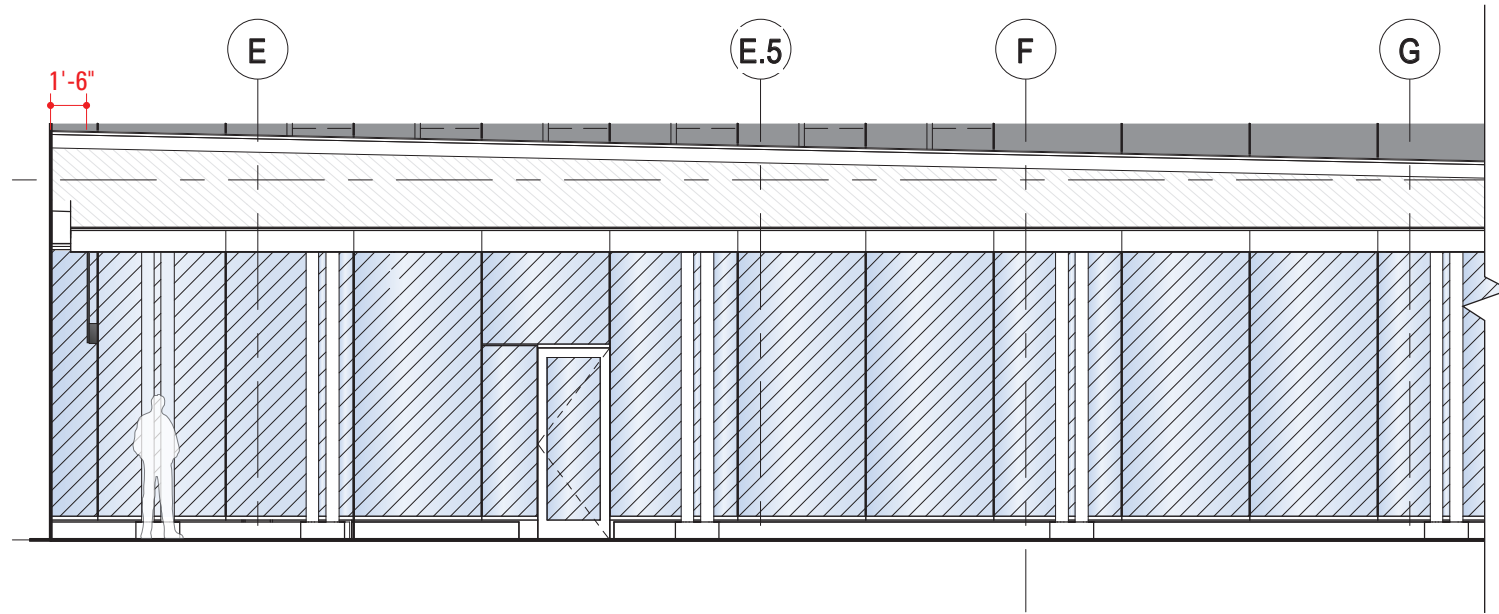
Spandrel Glazing

Vision Glazing





South Elevation



West Elevation

4

Contextual Elevation (Bldg B South)
Scale: 1" = 1/8'-0"

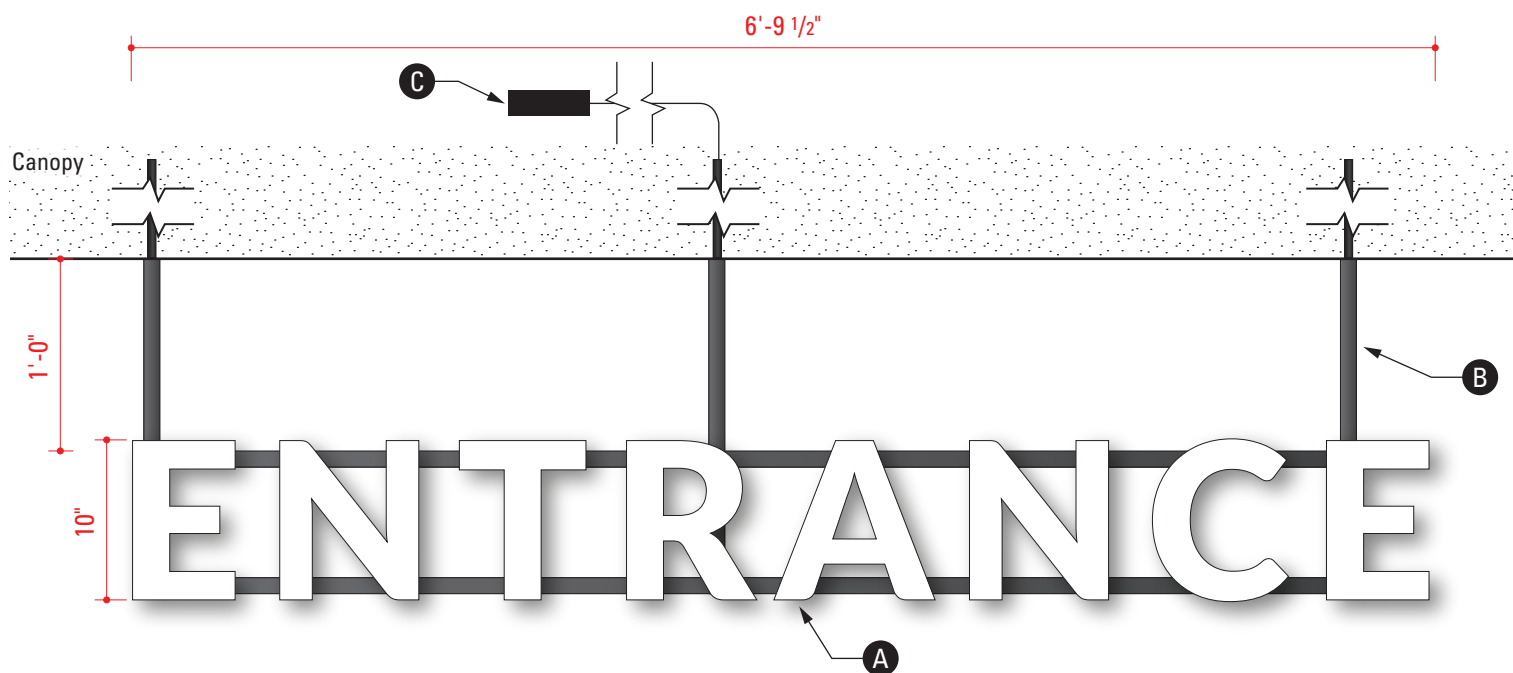
Fabrication Notes

- A** Logo is fabricated face-lit channel letters. Face: Formed white translucent polycarbonate attached at return surface. Returns: Painted to match, including polycarbonate returns and fasteners, MP19970 Blue Slate Metallic. LED temperature: 4,500K. Font: Lato, Black. Tracking: 100.
- B** 1"x1" aluminum mounting raceway painted to match MP19970 Blue Slate Metallic.
- C** Remote power transformer. Location TBD by G.C./Fabricator.

General Notes

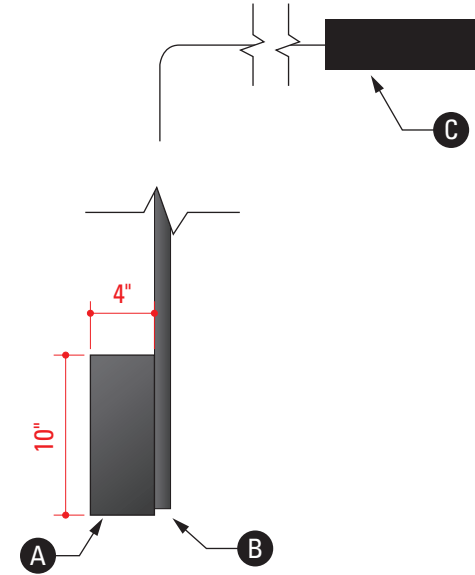
Fabricator to field verify mounting conditions prior to fabrication.

Fabricator to provide shop drawing for review and approval by Designer.



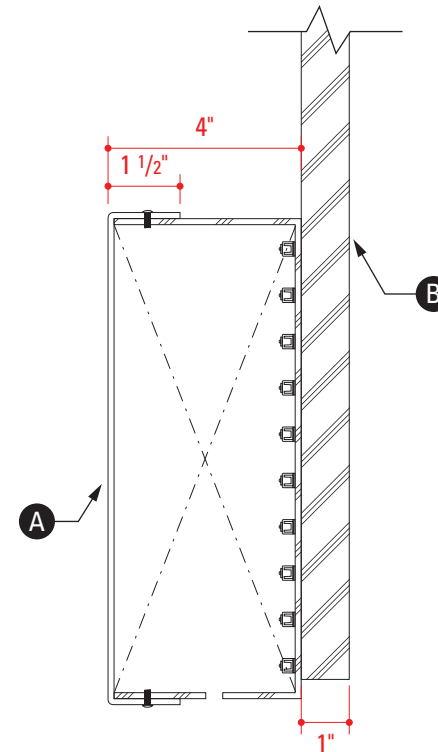
1

Elevation
Scale: 1" = 1'-0"



2

Side
Scale: 1" = 1'-0"



3

Section
Scale: 3" = 1'-0"

nbbj

223 Yale North Avenue Seattle, WA 98109
T 206.223.5555 F 206.621.2314

Project **SEARHC Mt. Edgecumbe Medical Center
Exterior Wayfinding System**
Design Phase **City and Borough of Sitka, Signage Variance Document**
Project Number **102562.80**

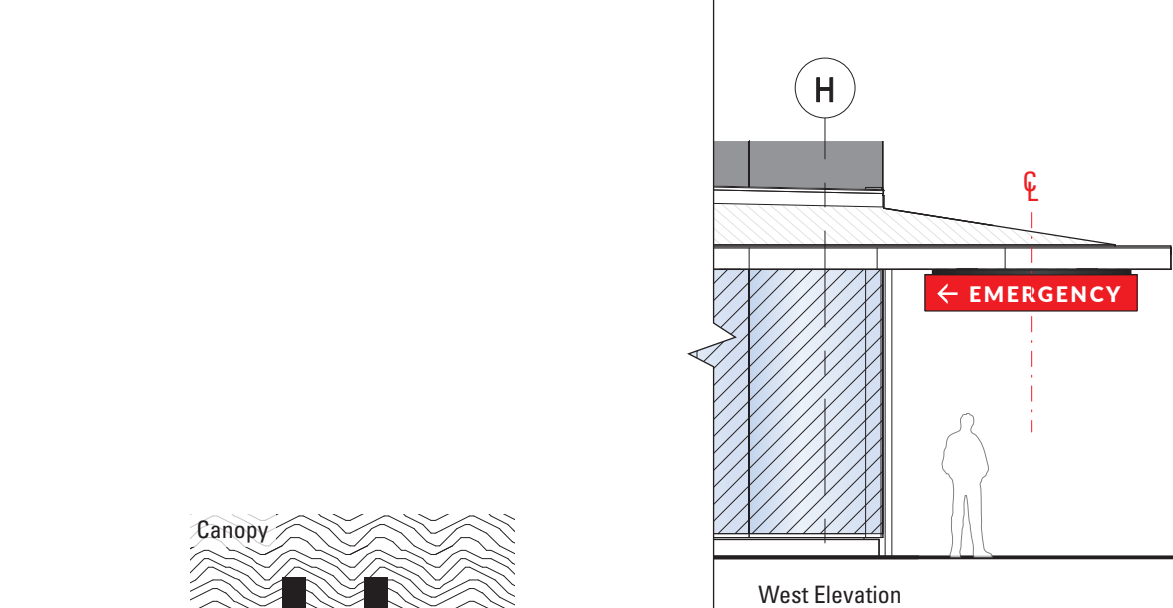
Sign Type **E3 Building Entrance Identity**

Drawn By **YI**
Scale **As Noted**

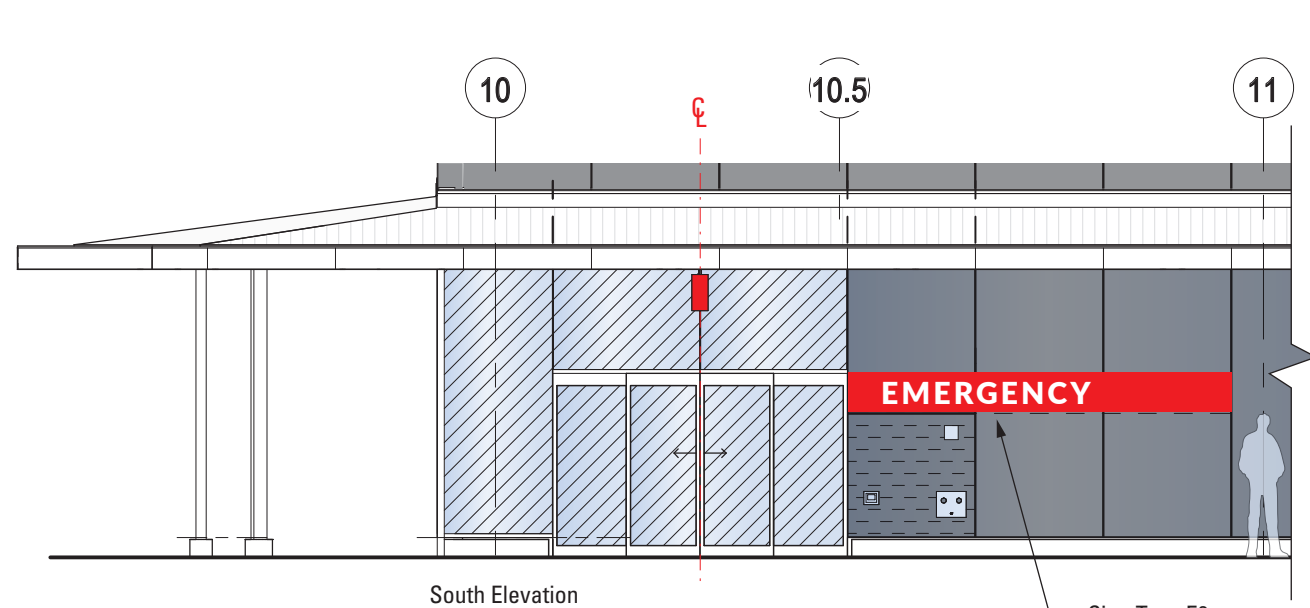
Issue Date **4.5.2023**
Revision Date(s)

All drawings and written material appearing herein constitute original and unpublished work of the designer and may not be duplicated, used or disclosed without written consent of designer.

Gr. **8**

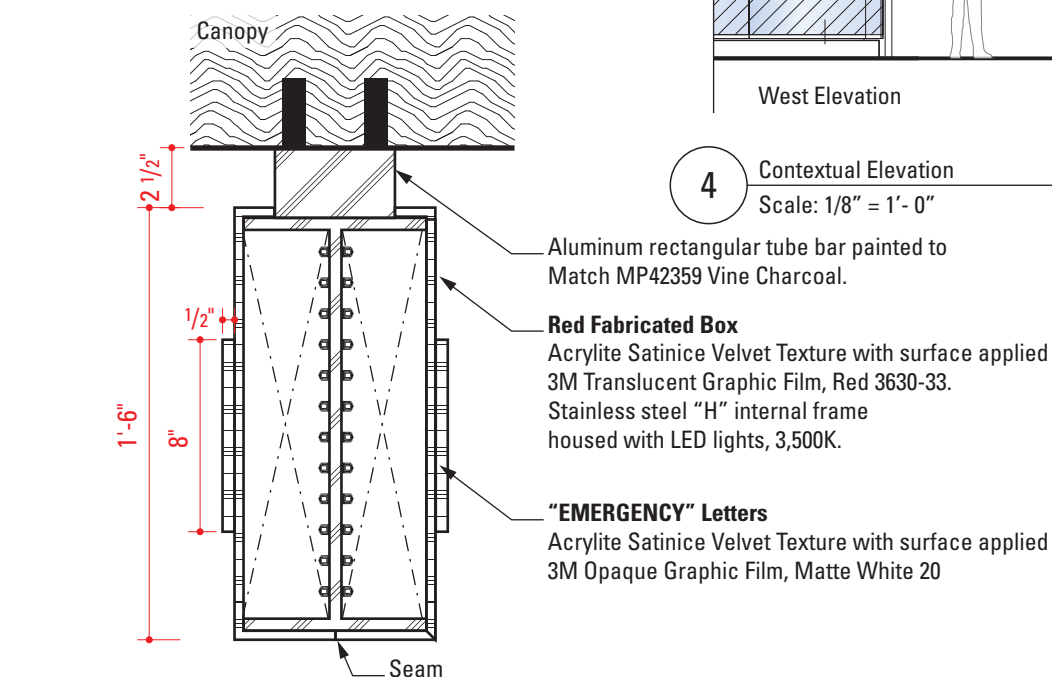


West Elevation

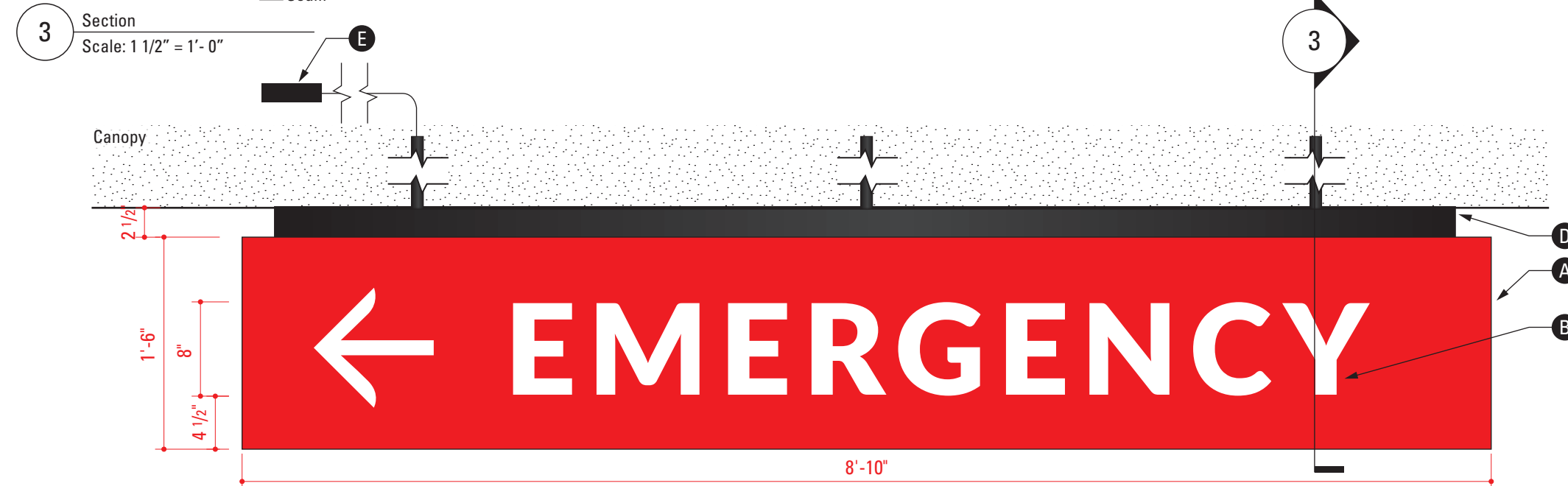


South Elevation

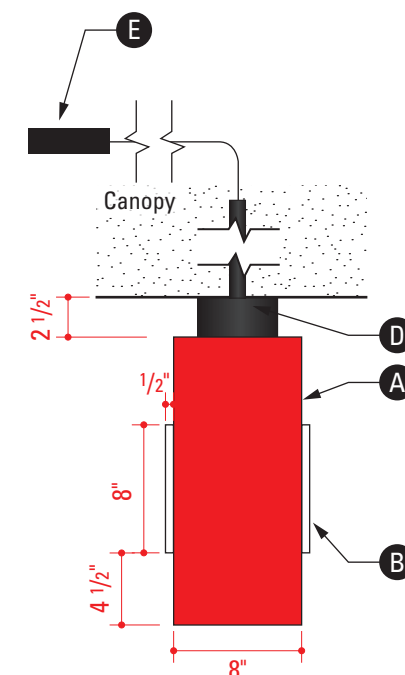
Sign Type E6



3 Section
Scale: 1 1/2" = 1'-0"



1 Elevation
Scale: 1" = 1'-0"



2 Side
Scale: 1" = 1'-0"

Fabrication Notes

- A** Internally lit fabricated box with "H" aluminum frame is skinned with Acrylite Satinice Velvet Texture, White WM32 SC faced with 3M Translucent Graphic Film, RED 3630-33. LED temperature: 3,500K.
- B** Letters are waterjet cut Acrylite Satinice Velvet Texture, White WM32 SC, faced 3M Opaque Graphic Film, Matte White 20. Font: Lato, Black. Tracking: 100.
- C** 1"x1" aluminum rectangular tube painted to match MP42359 Vine Charcoal.
- D** Power transformer. Location TBD by G.C./Fabricator.

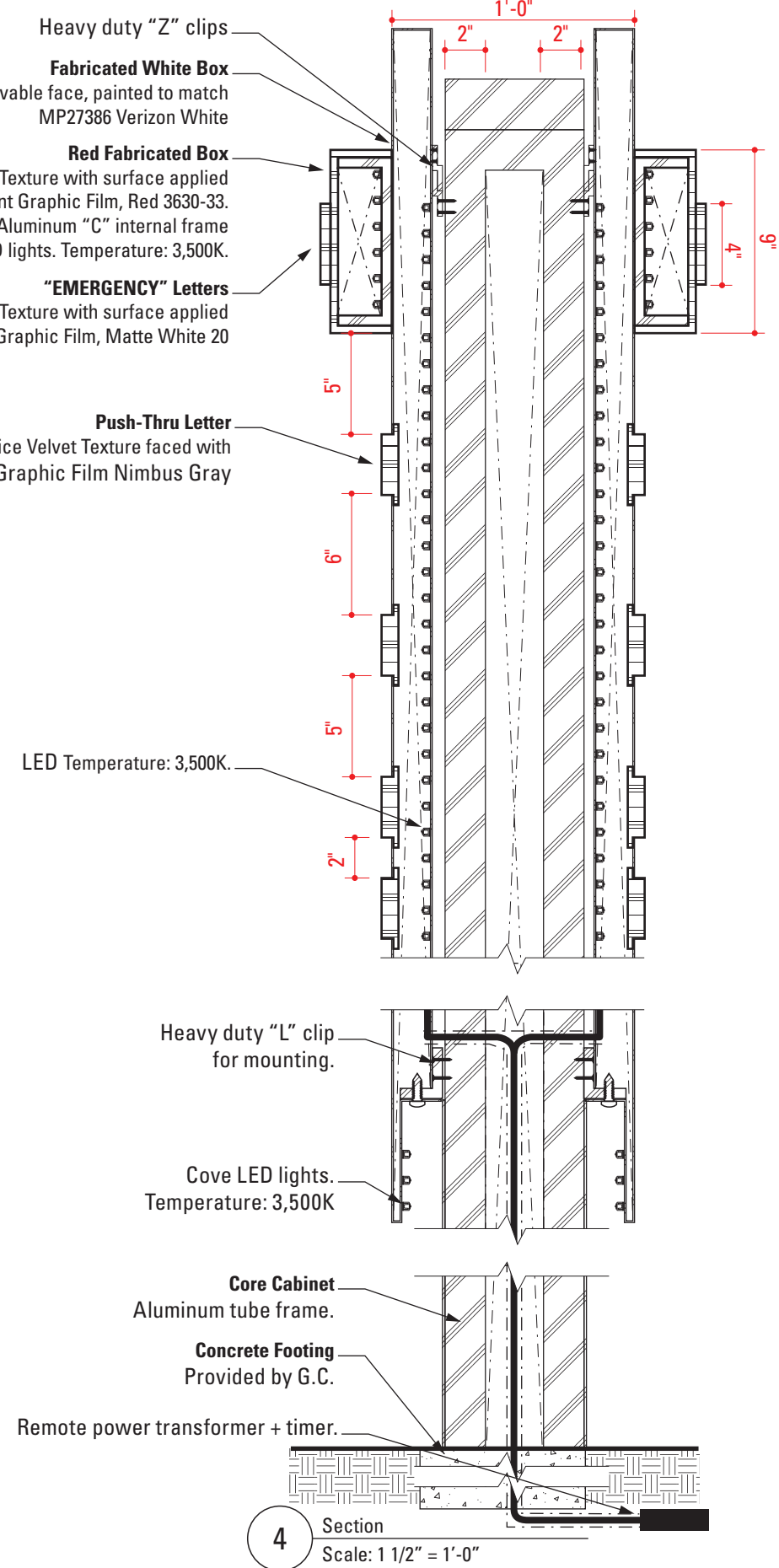
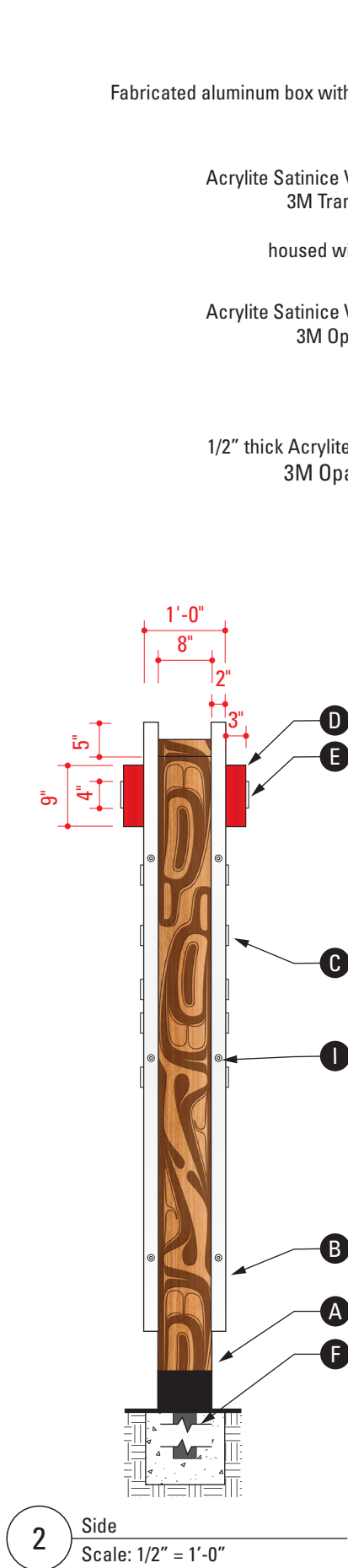
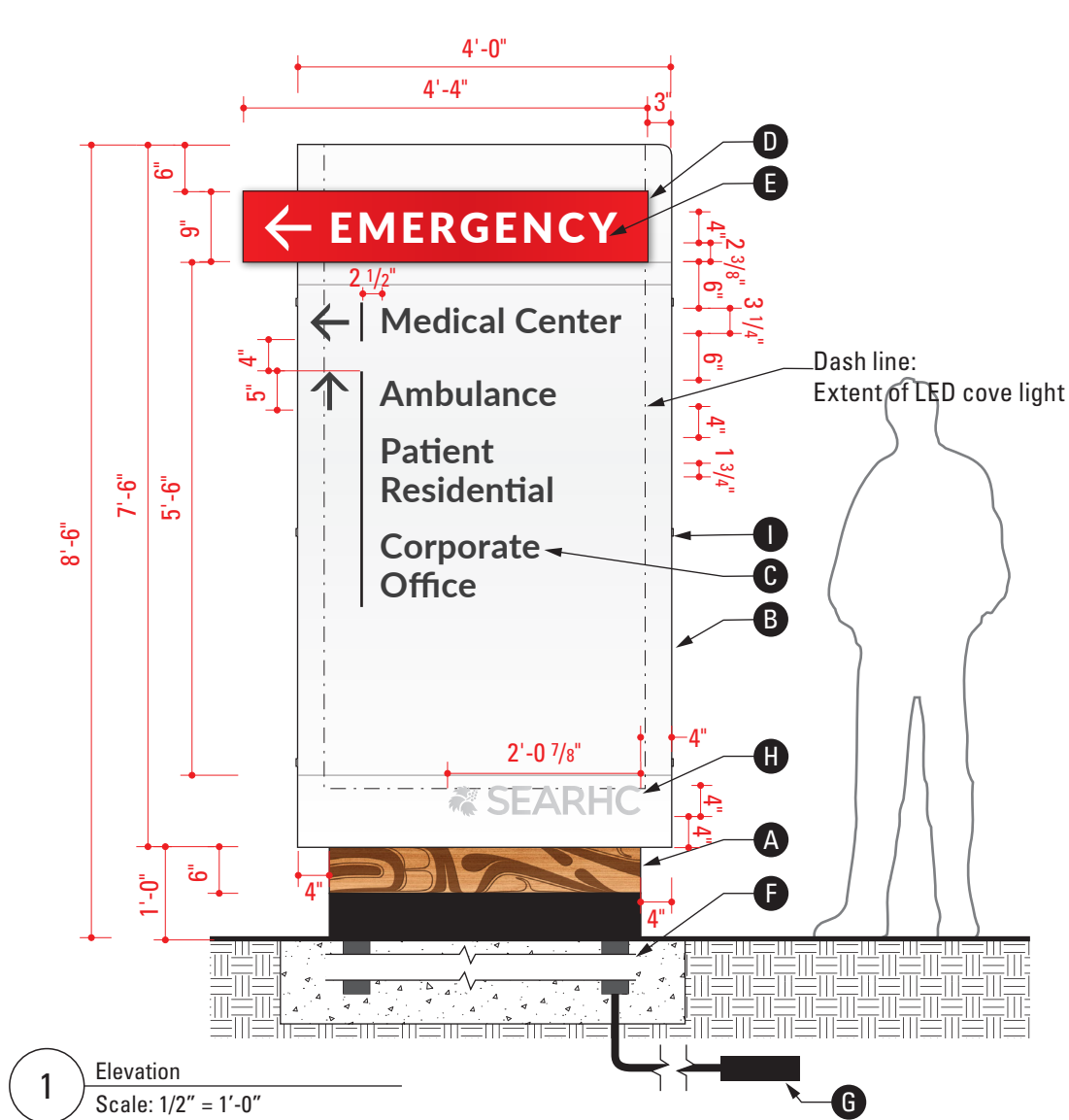
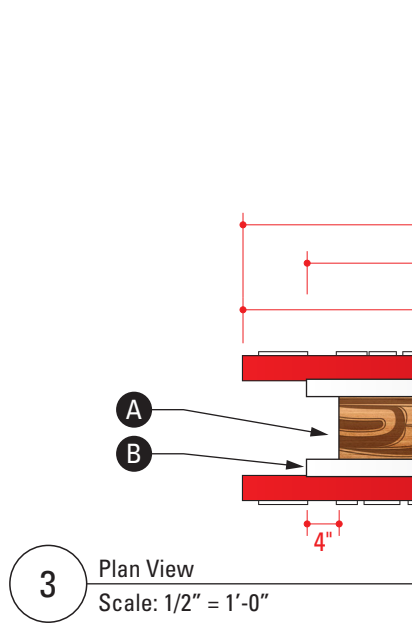
General Notes

Fabricator to field verify mounting conditions prior to fabrication.

Fabricator to provide shop drawing for review and approval by Designer.

Sample/Mock-ups

Functioning partial mock-up including arrow and "E".



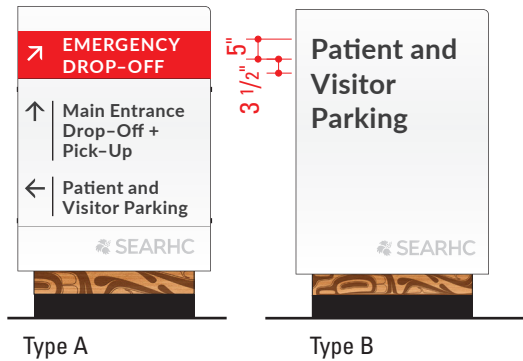
- Fabrication Notes**
- A** Core cabinet is 1/8" thick aluminum panel skinned to stainless steel structural frame. Wood texture, graphic pattern and black band are printed and clear coated.
 - B** Fabricated box with internal frame is skinned with 1/8" removable aluminum panel painted to match MP27386 Verizon White. LED cover lighting on bottom and sides. LED temperature: 3,500K.
 - C** Letters are 1/2" thick edge lit push-thru out of Acrylite Satinice, Velvet Texture, White WM32 SC, faced with 3M Opaque Graphic Film Nimbus Gray. LED temperature: 3,500K. Font: Lato, Bold. Tracking:10.
 - D** Internally lit fabricated box with "C" aluminum frame is skinned with Acrylite Satinice Velvet Texture, White WM32 SC faced with 3M Translucent Graphic Film, RED 3630-33. LED temperature: 3,500K.
 - E** Letters are waterjet cut Acrylite Satinice Velvet Texture, White WM32 SC, faced 3M Opaque Graphic Film, Matte White 20. Font: Lato, Black. Tracking: 100.
 - F** Securely mount to concrete footing.
 - G** Remote power transformer with timer. Location TBD by Fabricator and G.C.
 - H** Logo is screen printed to match Pantone Cool Grey 11C.
 - I** Countersunk screws painted to match MP27386 Verizon White.

General Notes

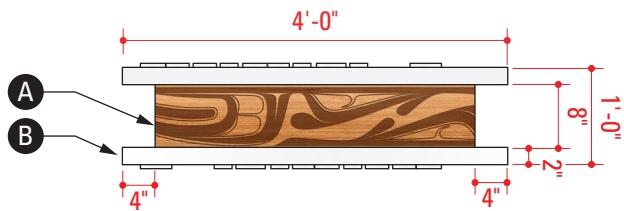
Fabricator to field verify mounting conditions prior to fabrication.

Fabricator to provide shop drawing for review and approval by Designer.

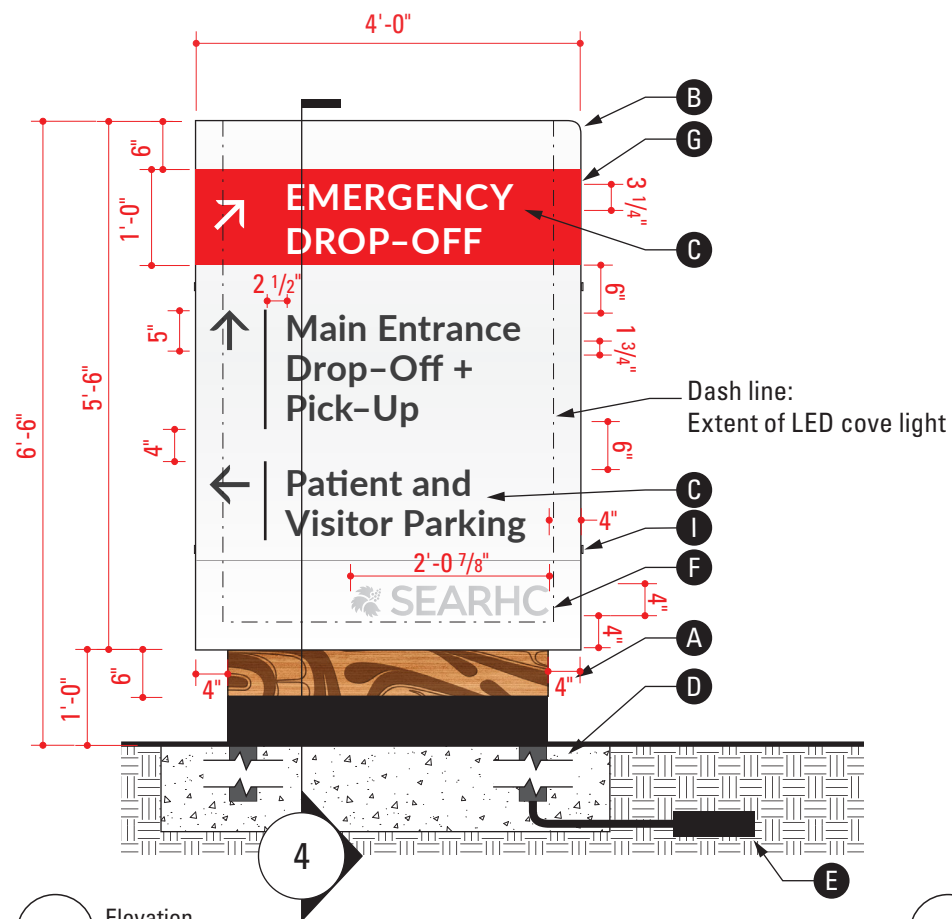
Digital Artwork provided by Designer.



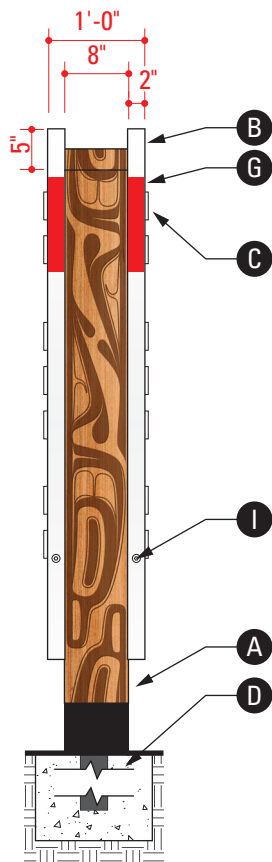
5 System
Scale: 1/4" = 1'-0"



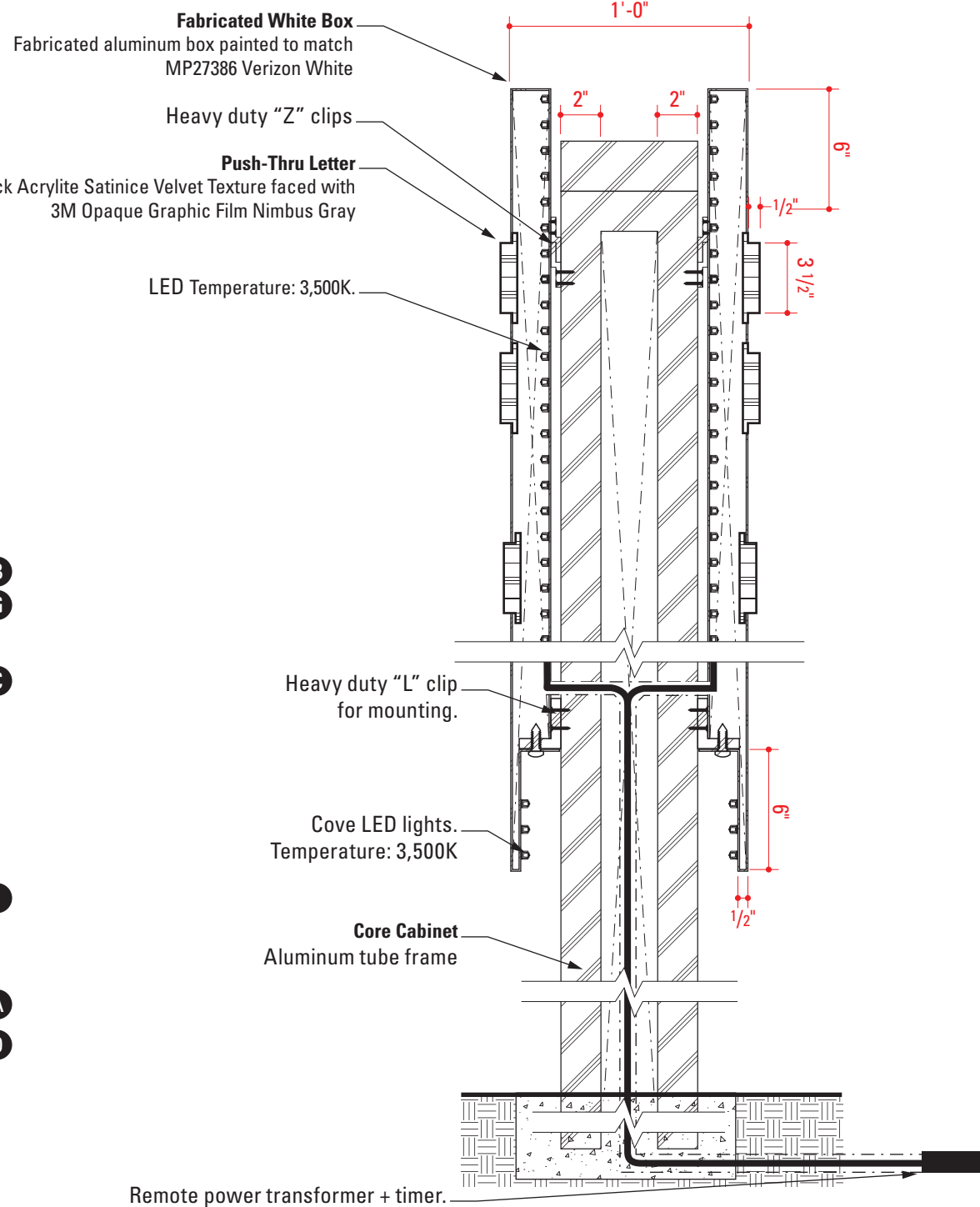
3 Plan View
Scale: 1/2" = 1'-0"



1 Elevation
Scale: 1/2" = 1'-0"



2 Side
Scale: 1/2" = 1'-0"



4 Section
Scale: 1 1/2" = 1'-0"

Fabrication Notes

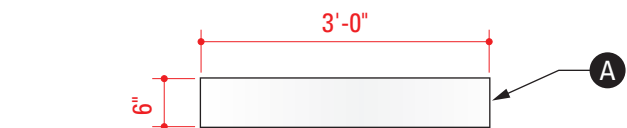
- A** Core cabinet is 1/8" aluminum skinned to aluminum structural frame. Wood texture, graphic pattern and black band are printed and clear-coated.
- B** Fabricated box with internal frame is skinned with 1/8" removable aluminum panel painted to match MP27386 Verizon White. LED cove lighting on bottom and sides. LED temperature: 3,500K.
- C** Letters are 1/2" thick edge lit push-thru out of Acrylite Satinice, Velvet Texture, White WM32 SC, faced with 3M Opaque Graphic Film Nimbus Gray. LED temperature: 3,500K. Font: Lato, Black. Tracking: 35.
- D** Securely mount to concrete footing as required per engineering.
- E** Power transformer with timer. Location TBD by Fabricator and G.C.
- F** Logo is screen printed to match Pantone Cool Grey 11C.
- G** Horizontal band is painted to match Pantone 1797 C.
- I** Countersunk screws painted to match MP27386 Verizon White.

General Notes

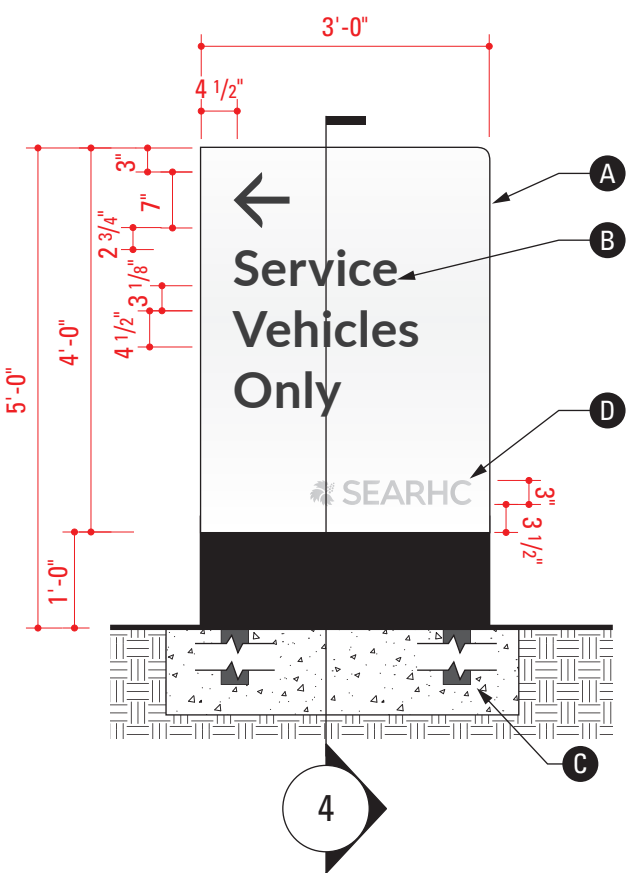
Fabricator to field verify mounting conditions prior to fabrication.

Fabricator to provide shop drawing for review and approval by Designer.

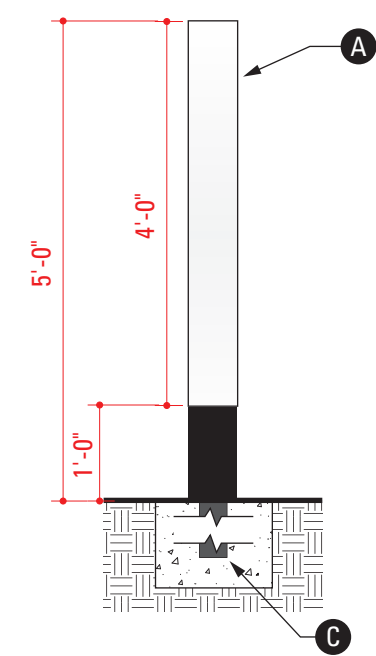
Digital Artwork provided by Designer.



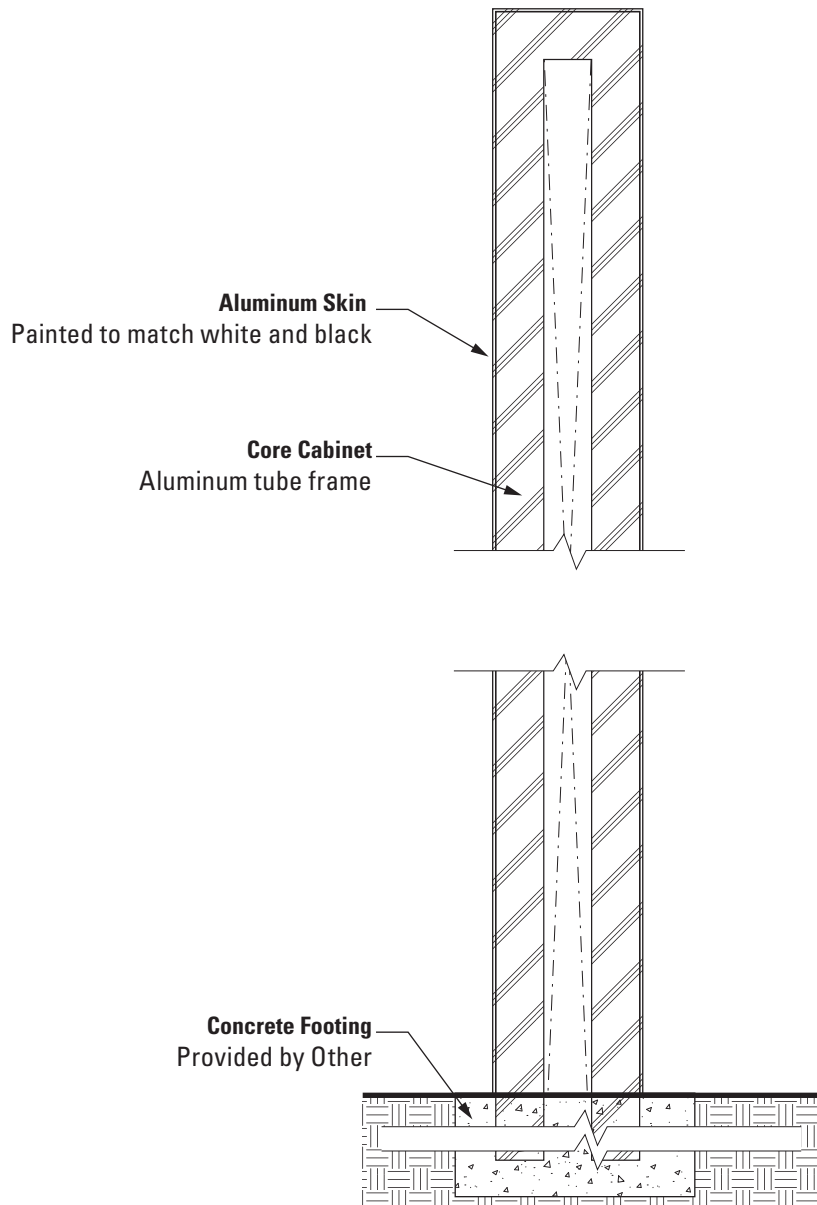
3 Plan View
Scale: 1/2" = 1'-0"



1 Elevation
Scale: 1/2" = 1'-0"



2 Side
Scale: 1/2" = 1'-0"

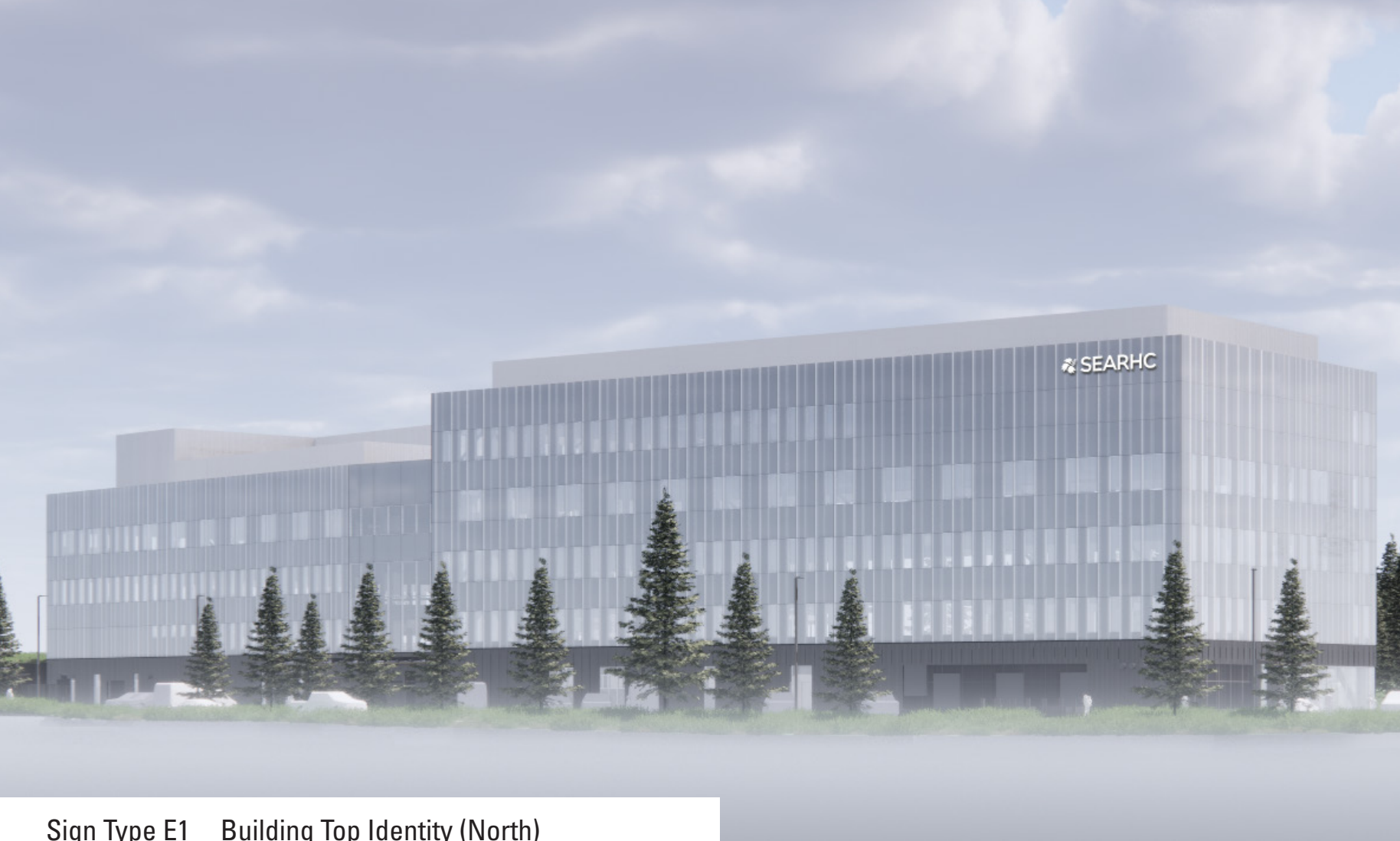


4 Section
Scale: 1 1/2" = 1'-0"

- Fabrication Notes**
- A** Core cabinet is 1/8" thick aluminum skinned to aluminum structural frame. Paint to match MP27386 Verizon White and MP
 - B** Letters and arrow are plotter cut 3M Opaque Graphic Film Nimbus Gray 101. Font: Lato, Bold. Tracking: 35.
 - C** Securely mount to concrete footing as required per engineering.
 - D** Logo is screen printed to match Pantone Cool Grey 11C.

General Notes
Fabricator to field verify mounting conditions prior to fabrication.

Fabricator to provide shop drawing for review and approval by Designer.



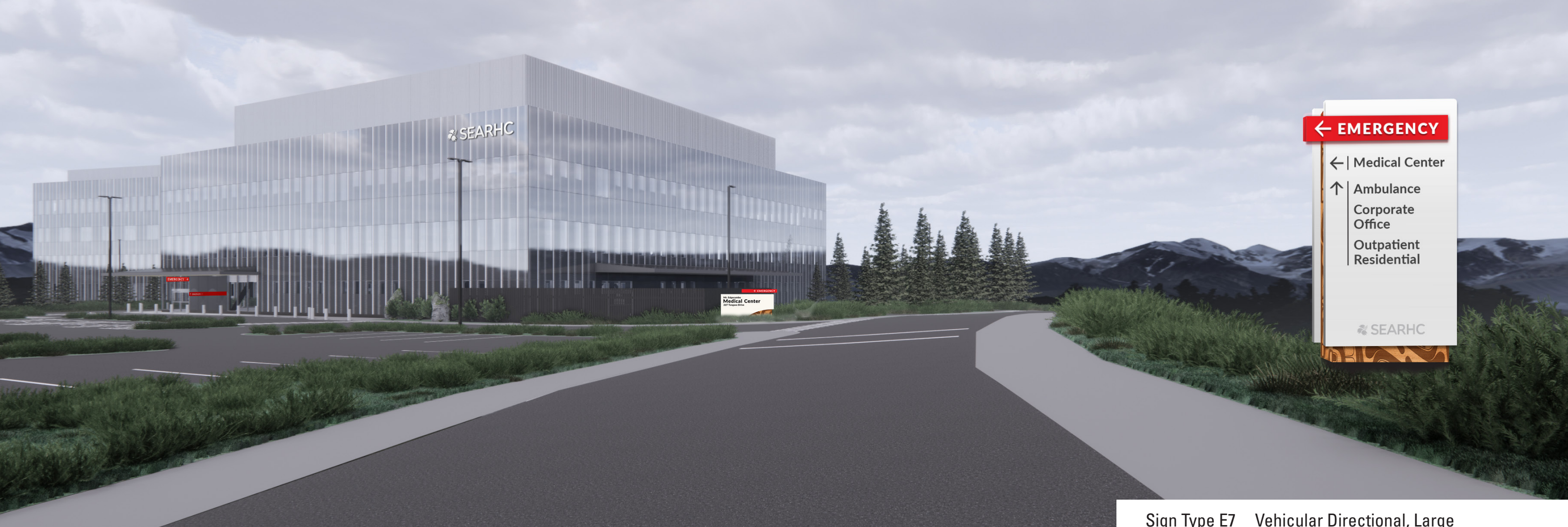
Sign Type E1 Building Top Identity (North)



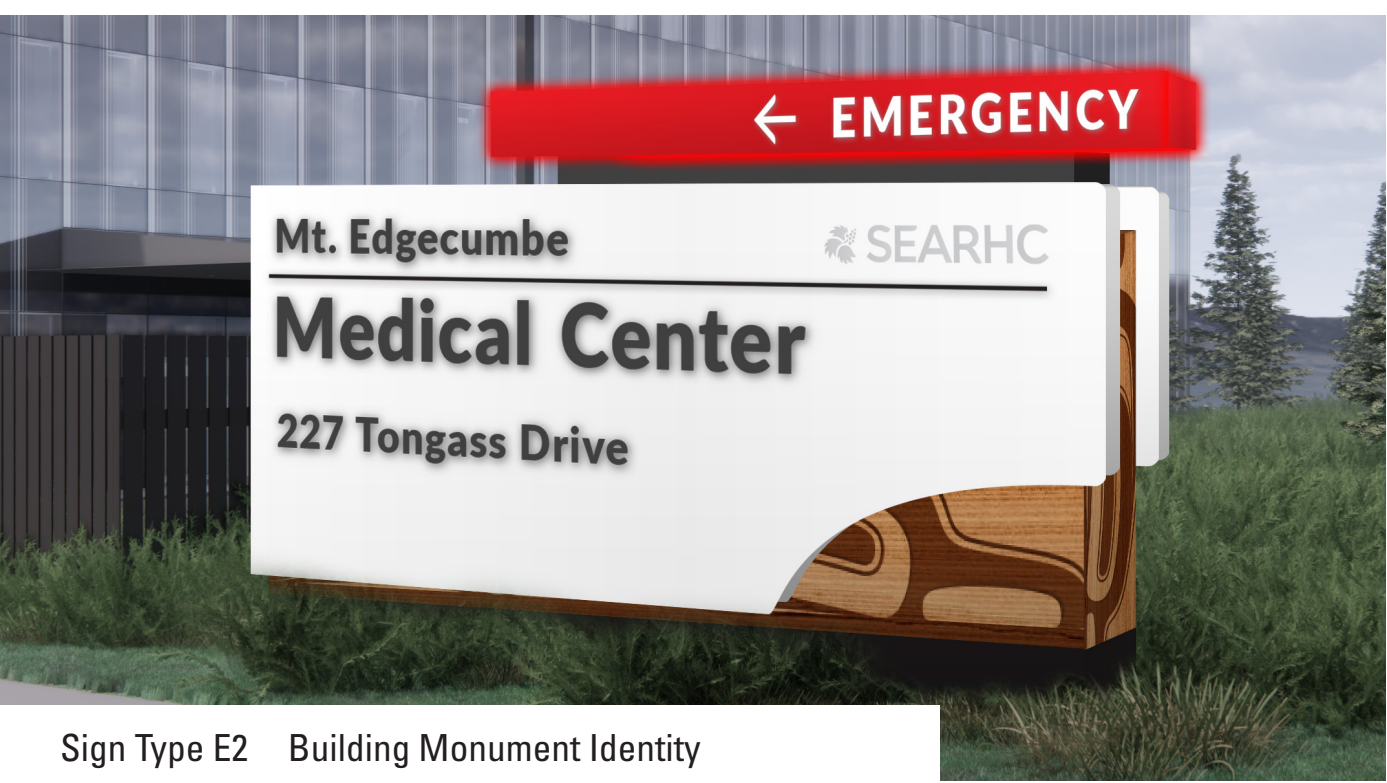
Sign Type E1 Building Top Identity (South)



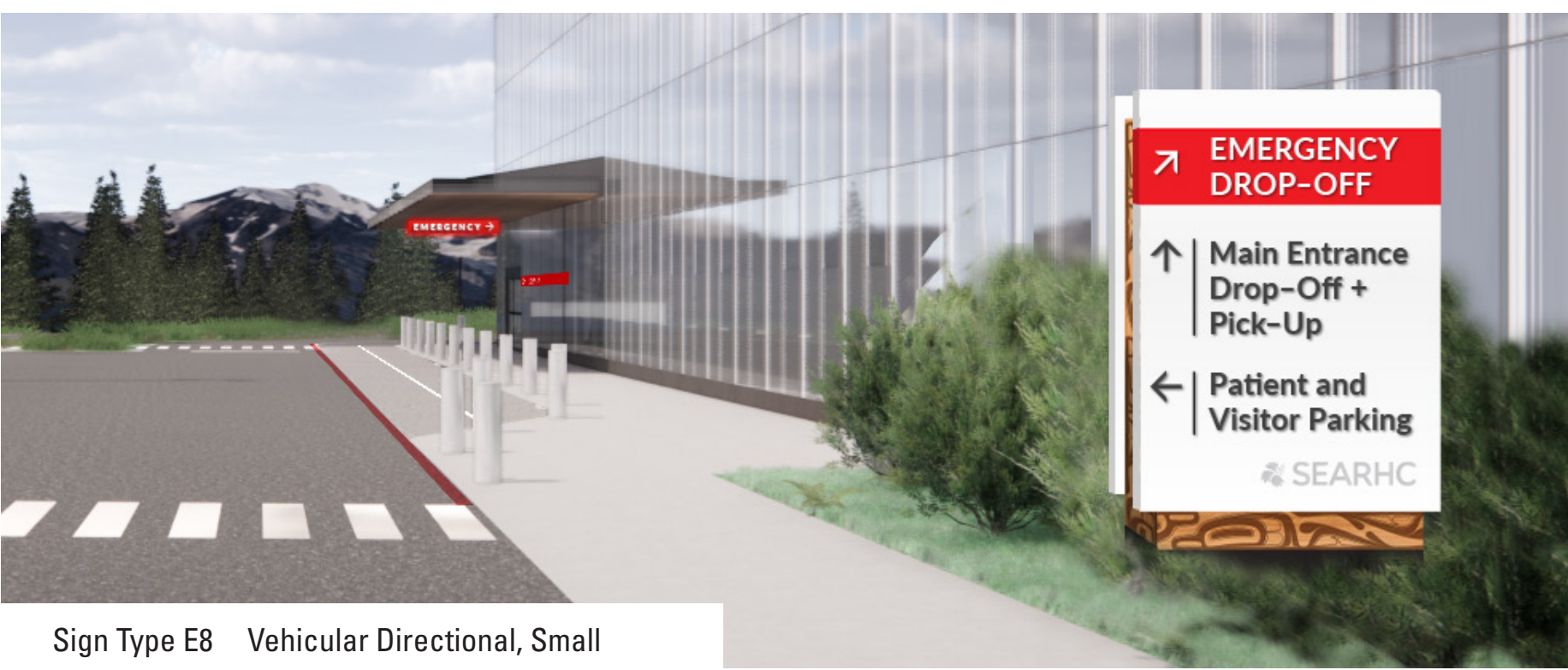
Sign Type E1 Building Top Identity (North)



Sign Type E7 Vehicular Directional, Large



Sign Type E2 Building Monument Identity



Sign Type E8 Vehicular Directional, Small



Sign Type E5 Emergency Identity, Canopy



Sign Type E3 Building Entrance Identity



Sign Type E4 Ambulance Entrance Identity



Sign Type E13 Parking Stall Identification



Sign Type E14 Vehicular Directional, Staff



Sign Type E1 Building Top Identity (North)



Sign Type E1 Building Top Identity (South)



Sign Type E1 Building Top Identity (North)

nbbj

223 Yale North Avenue Seattle, WA 98109
T 206.223.5555 F 206.621.2314

Project

SEARHC Mt. Edgecumbe Medical Center
Exterior Wayfinding System

Design Phase

City and Borough of Sitka,
Signage Variance Document

Project Number

102562.80

Location Plan

Renderings, Night View

Renderings are for context purposes only. They do not reflect the current architecture/landscape design.
The renderings diagrammatically illustrate the lighting.

Drawn By YI

Scale

As Noted

Issue Date

4.5.2023

Revision Date(s)

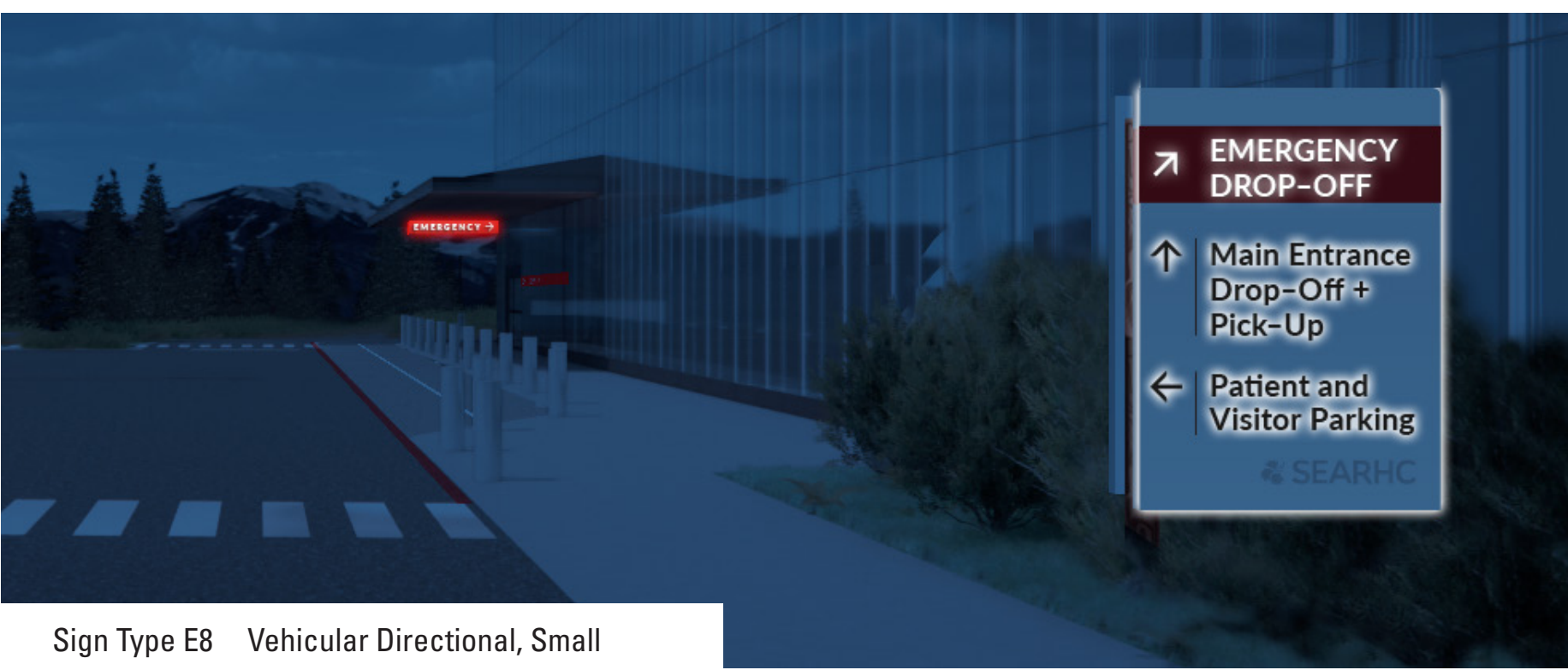
All drawings and written material appearing herein constitute original and unpublished work of the designer and may not be duplicated, used or disclosed without written consent of designer.



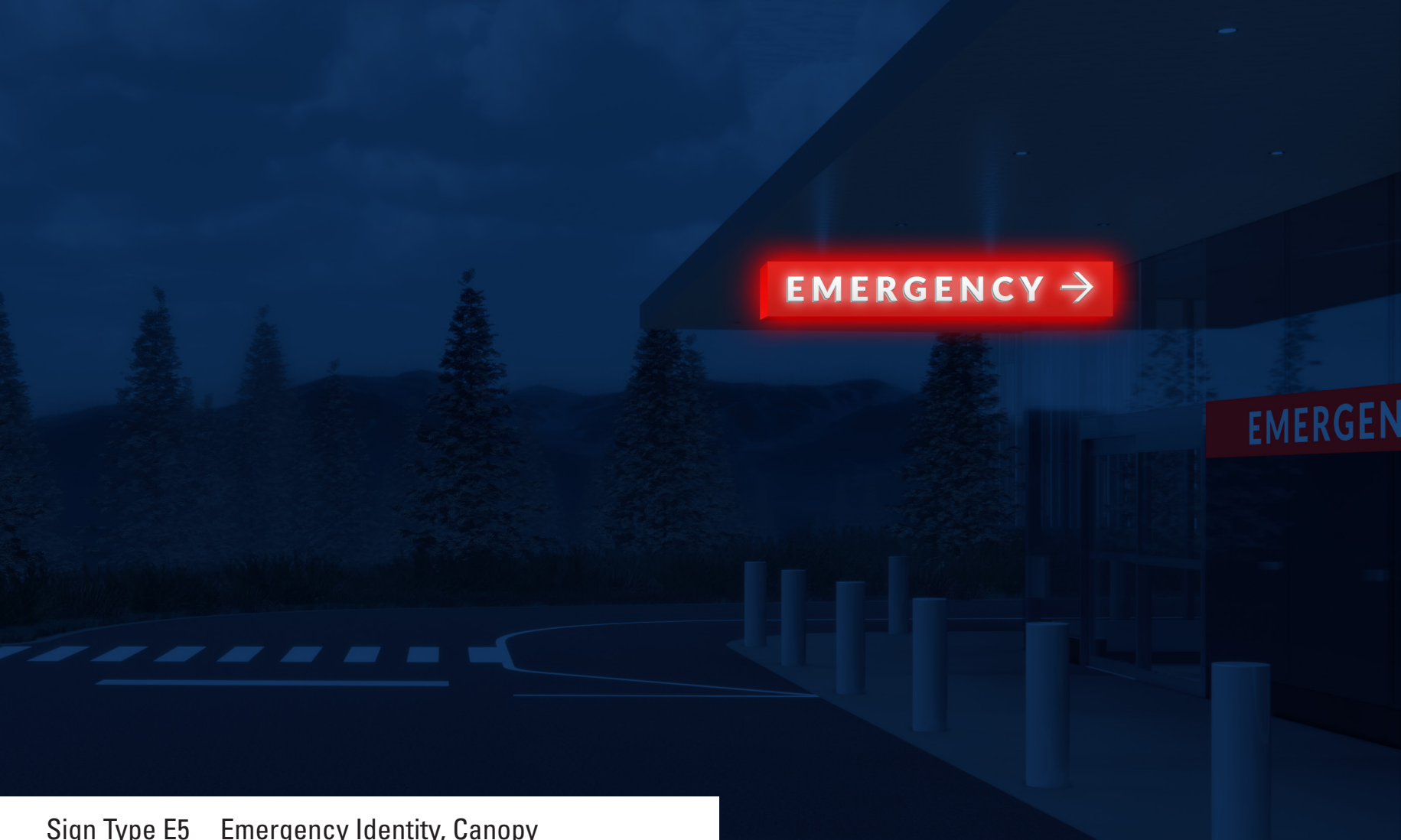
Sign Type E7 Vehicular Directional, Large



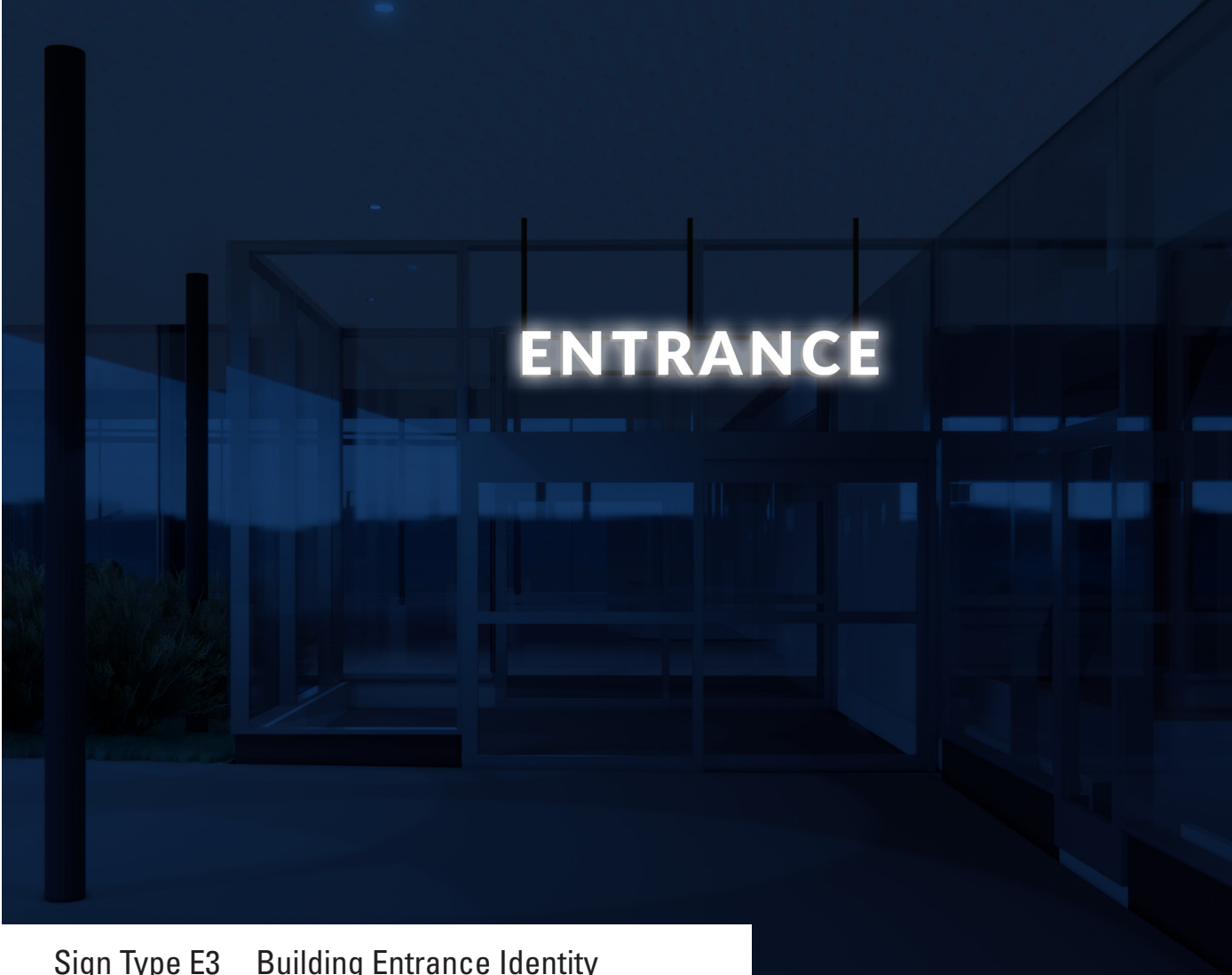
Sign Type E2 Building Monument Identity



Sign Type E8 Vehicular Directional, Small



Sign Type E5 Emergency Identity, Canopy



Sign Type E3 Building Entrance Identity



Sign Type E4 Ambulance Entrance Identity