

# STOWAWAY CORNERS

505 SAWMILL CREEK RD  
SITKA, ALASKA  
BID PROGRESS SET

## OWNER

Stowaway Enterprises, LLC  
Brendan Jones  
Rachel DiNardo Jones  
Mario Singh  
Ralph Larose III  
Sherry LaRose

## ARCHITECT

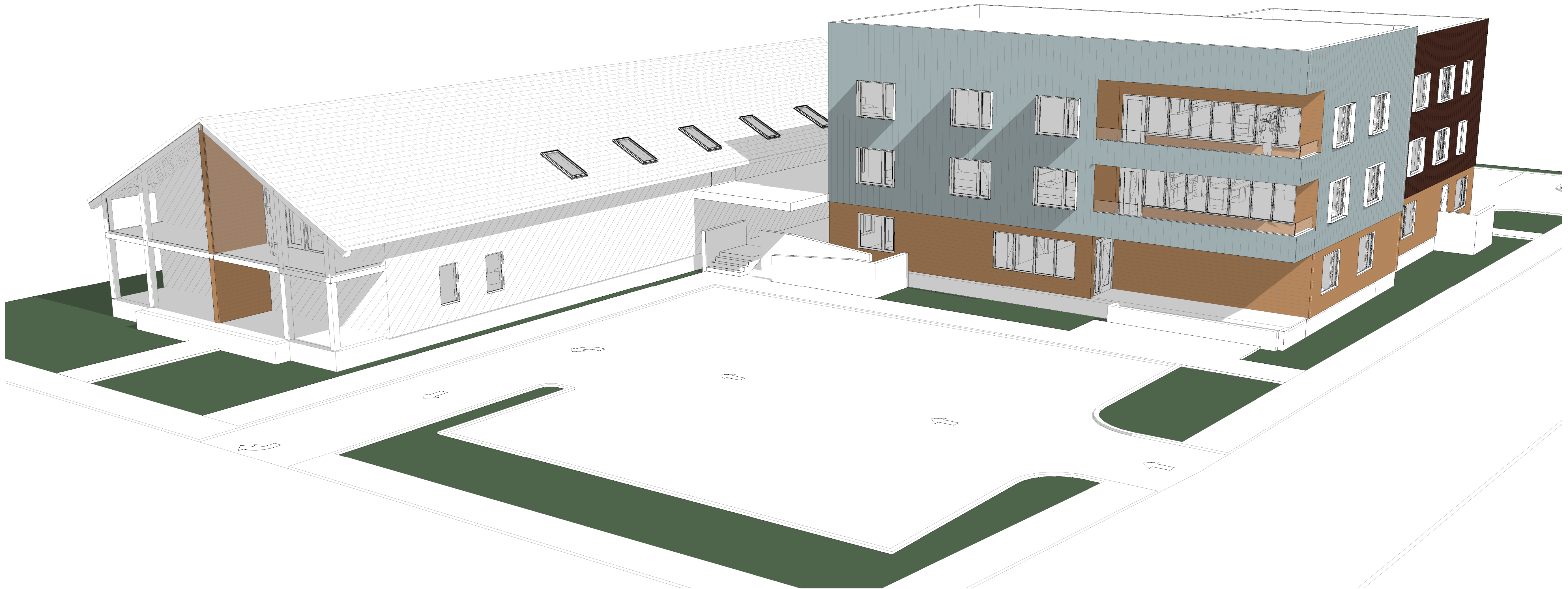


NorthWind Architects, LLC.  
126 Seward St.  
Juneau, Alaska 99801  
James Bibb, AIA  
#

## PROJECT DESCRIPTION

SCOPE OF WORK DESCRIBED BELOW IS INCLUSIVE OF ALL ASSOCIATED ARCHITECTURAL, MECHANICAL AND ELECTRICAL WORK WITHIN, OR REQUIRED TO SUPPORT THE AREAS DELINEATED.

THE WORK OF PROJECT IS DEFINED BY THE CONTRACT DOCUMENT DRAWINGS AND SPECIFICATIONS, IS FOR THE CONSTRUCTION OF A NEW BUILDING. BASE ID AND DESIGN ALTERNATES AND CONSISTS OF THE FOLLOWING:



COVER SHEET

SHEET #

G0.0

PLOT DATE:  
ISSUE DATE:

01.01.2022  
01.01.2022

IF THIS BAR DOES NOT MEASURE EXACTLY ONE INCH, THE SCALE OF THIS DRAWING HAS BEEN ALTERED DURING ITS PRODUCTION, AFFECTING ALL LABELED SCALES

9/20/2023 7:36:19 AM



**2** OVERALL FLOOR PLAN - FIRST FLOOR  
1/8" = 1'-0"

- GENERAL NOTES:**
1. CONTRACTOR SHALL FIELD VERIFY ACTUAL BUILDING CONDITIONS AND DIMENSIONS. WHERE DISCREPANCIES OR CONFLICTS ARE FOUND, NOTIFY ARCHITECT PRIOR TO COMMENCING WORK.
  2. DO NOT SCALE OFF OF DRAWINGS.
  3. DIMENSIONS ARE TO GRIDLINE, FACE OR CENTER OF FRAMING UNO.
  4. STRUCTURAL ELEMENTS SHOWN IN ARCHITECTURAL DRAWINGS FOR REFERENCE ONLY. SEE STRUCTURAL DRAWINGS FOR ALL STRUCTURAL INFORMATION.
  5. SEE ENLARGED PARTIAL PLANS FOR INFORMATION NOT SHOWN HERE.

- LEGEND:**
- (E) STRUCT. FRAMING TO REMAIN
  - (E) TO REMAIN
  - (N) WALL / PARTITION

**NOT FOR CONSTRUCTION**

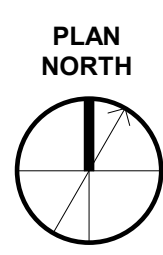
  
**NorthWind Architects, LLC**  
 126 Seward St  
 Juneau, AK 99801  
 Ph #907.586.6150  
 www.northwindarch.com

PROJECT:  
**STOWAWAY CORNERS**  
**505 SAWMILL CREEK RD**  
**SITKA, ALASKA**

SHEET TITLE:  
**LEVEL 1 FLOOR PLAN**  
**BID PROGRESS SET**

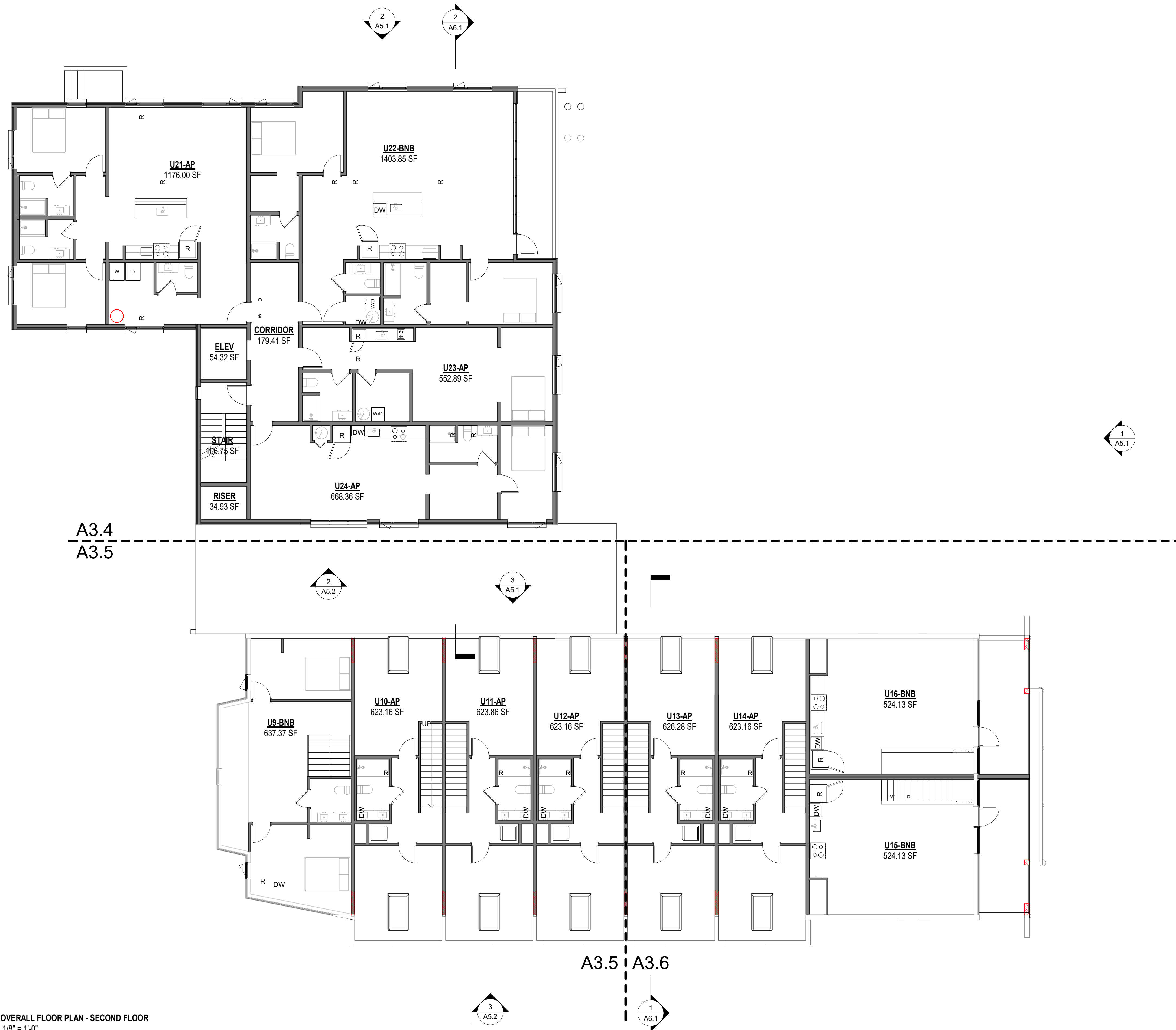
DESIGN	Designer
DRAWN	Author
CHECKED	Checker
DATE	01.01.2022

PROJECT No.  
**NWA-2224**  
 SHEET NUMBER  
**A2.1**





9/20/2023 7:36:19 AM IF THIS BAR DOES NOT MEASURE EXACTLY ONE INCH, THE SCALE OF THIS DRAWING HAS BEEN ALTERED DURING ITS PRODUCTION, AFFECTING ALL LABELED SCALES 1"



- GENERAL NOTES:**
1. CONTRACTOR SHALL FIELD VERIFY ACTUAL BUILDING CONDITIONS AND DIMENSIONS. WHERE DISCREPANCIES OR CONFLICTS ARE FOUND, NOTIFY ARCHITECT PRIOR TO COMMENCING WORK.
  2. DO NOT SCALE OFF OF DRAWINGS.
  3. DIMENSIONS ARE TO GRIDLINE, FACE OR CENTER OF FRAMING UNO.
  4. STRUCTURAL ELEMENTS SHOWN IN ARCHITECTURAL DRAWINGS FOR REFERENCE ONLY. SEE STRUCTURAL DRAWINGS FOR ALL STRUCTURAL INFORMATION.
  5. SEE ENLARGED PARTIAL PLANS FOR INFORMATION NOT SHOWN HERE.

**NOT FOR CONSTRUCTION**

**NorthWind Architects, LLC**  
 126 Seward St  
 Juneau, AK 99801  
 Ph #907.586.6150  
 www.northwindarch.com

**PROJECT :**  
 STOWAWAY CORNERS  
 505 SAWMILL CREEK RD  
 SITKA, ALASKA

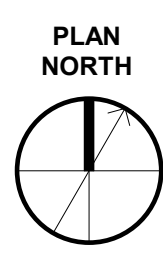
**SHEET TITLE :**  
 LEVEL 2 FLOOR PLAN  
 BID PROGRESS SET

DESIGN	Designer
DRAWN	Author
CHECKED	Checker
DATE	01.01.2022

PROJECT No.  
**NWA-2224**  
 SHEET NUMBER  
**A2.2**

- LEGEND:**
- (E) STRUCT. FRAMING TO REMAIN
  - (E) TO REMAIN
  - (N) WALL / PARTITION

**1 OVERALL FLOOR PLAN - SECOND FLOOR**  
 1/8" = 1'-0"



IF THIS BAR DOES NOT MEASURE EXACTLY ONE INCH, THE SCALE OF THIS DRAWING HAS BEEN ALTERED DURING ITS PRODUCTION, AFFECTING ALL LABELED SCALES



- GENERAL NOTES:**
1. CONTRACTOR SHALL FIELD VERIFY ACTUAL BUILDING CONDITIONS AND DIMENSIONS. WHERE DISCREPANCIES OR CONFLICTS ARE FOUND, NOTIFY ARCHITECT PRIOR TO COMMENCING WORK.
  2. DO NOT SCALE OFF OF DRAWINGS.
  3. DIMENSIONS ARE TO GRIDLINE, FACE OR CENTER OF FRAMING UNO.
  4. STRUCTURAL ELEMENTS SHOWN IN ARCHITECTURAL DRAWINGS FOR REFERENCE ONLY. SEE STRUCTURAL DRAWINGS FOR ALL STRUCTURAL INFORMATION.
  5. SEE ENLARGED PARTIAL PLANS FOR INFORMATION NOT SHOWN HERE.

**NOT FOR CONSTRUCTION**

**NorthWind Architects, LLC**  
 126 Seward St  
 Juneau, AK 99801  
 Ph #907.586.6150  
 www.northwindarch.com

PROJECT:  
**STOWAWAY CORNERS**  
**505 SAWMILL CREEK RD**  
**SITKA, ALASKA**

- LEGEND:**
- (E) STRUCT. FRAMING TO REMAIN
  - (E) TO REMAIN
  - (N) WALL / PARTITION

SHEET TITLE:  
**LEVEL 3 FLOOR PLAN**  
**BID PROGRESS SET**

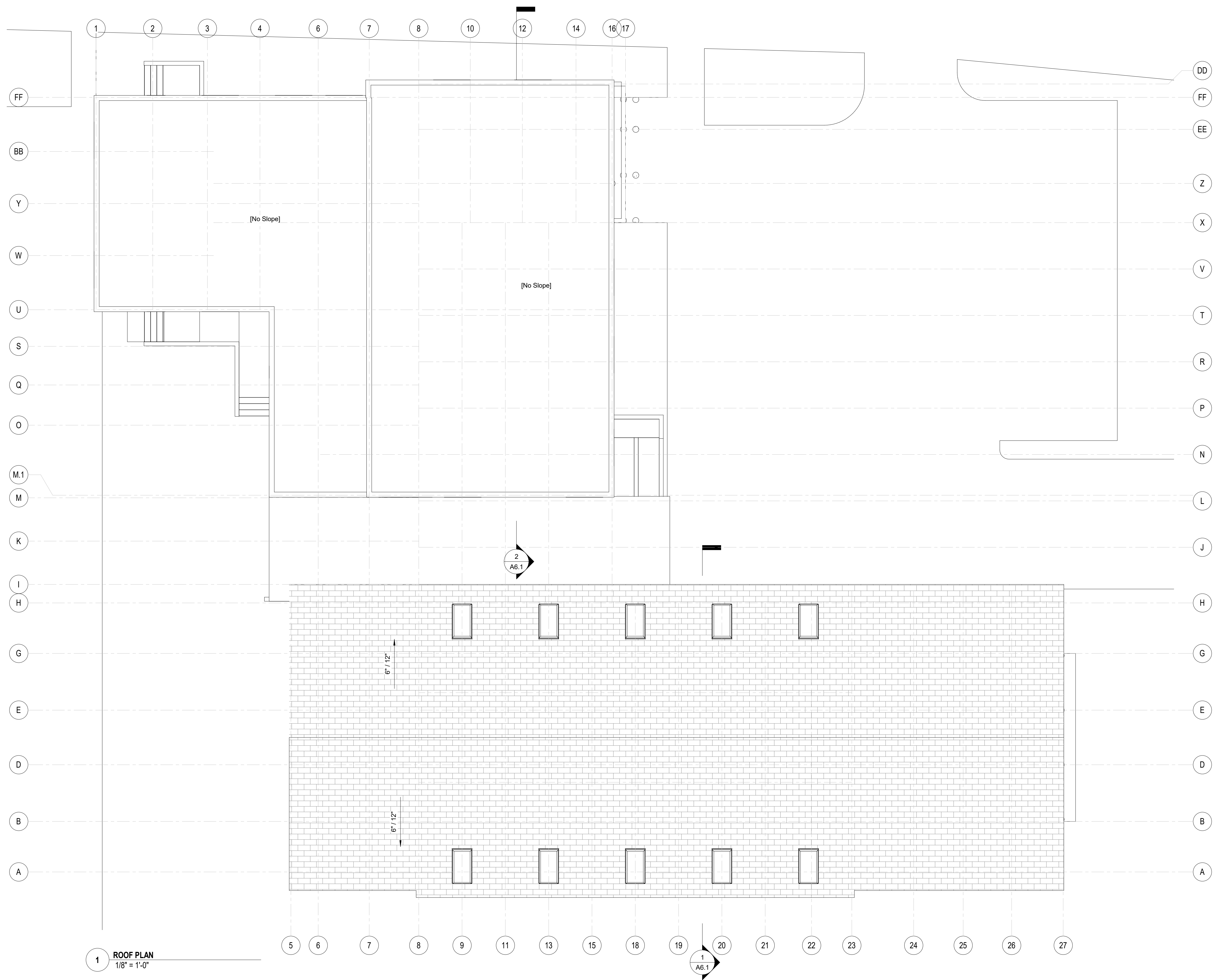
DESIGN	Designer
DRAWN	Author
CHECKED	Checker
DATE	01.01.2022

PROJECT No.  
**NWA-2224**  
 SHEET NUMBER  
**A2.3**

**1** OVERALL FLOOR PLAN - THIRD FLOOR  
 1/8" = 1'-0"

9/20/2023 7:39:20 AM

1" IF THIS BAR DOES NOT MEASURE EXACTLY ONE INCH, THE SCALE OF THIS DRAWING HAS BEEN ALTERED DURING ITS PRODUCTION, AFFECTING ALL LABELED SCALES



1 ROOF PLAN  
1/8" = 1'-0"

- GENERAL NOTES:**
1. CONTRACTOR SHALL FIELD VERIFY ACTUAL BUILDING CONDITIONS AND DIMENSIONS. WHERE DISCREPANCIES OR CONFLICTS ARE FOUND, NOTIFY ARCHITECT PRIOR TO COMMENCING WORK.
  2. DO NOT SCALE OFF OF DRAWINGS.
  3. DIMENSIONS ARE TO GRIDLINE, FACE OR CENTER OF FRAMING UNO.
  4. STRUCTURAL ELEMENTS SHOWN IN ARCHITECTURAL DRAWINGS FOR REFERENCE ONLY. SEE STRUCTURAL DRAWINGS FOR ALL STRUCTURAL INFORMATION.
  5. SEE ENLARGED PARTIAL PLANS FOR INFORMATION NOT SHOWN HERE.

**NOT FOR CONSTRUCTION**

**NorthWind Architects, LLC**

126 Seward St  
Juneau, AK 99801  
Ph #907.586.6150  
www.northwindarch.com

PROJECT :

**STOWAWAY CORNERS**

**505 SAWMILL CREEK RD**  
**SITKA, ALASKA**

SHEET TITLE :

**ROOF PLAN**

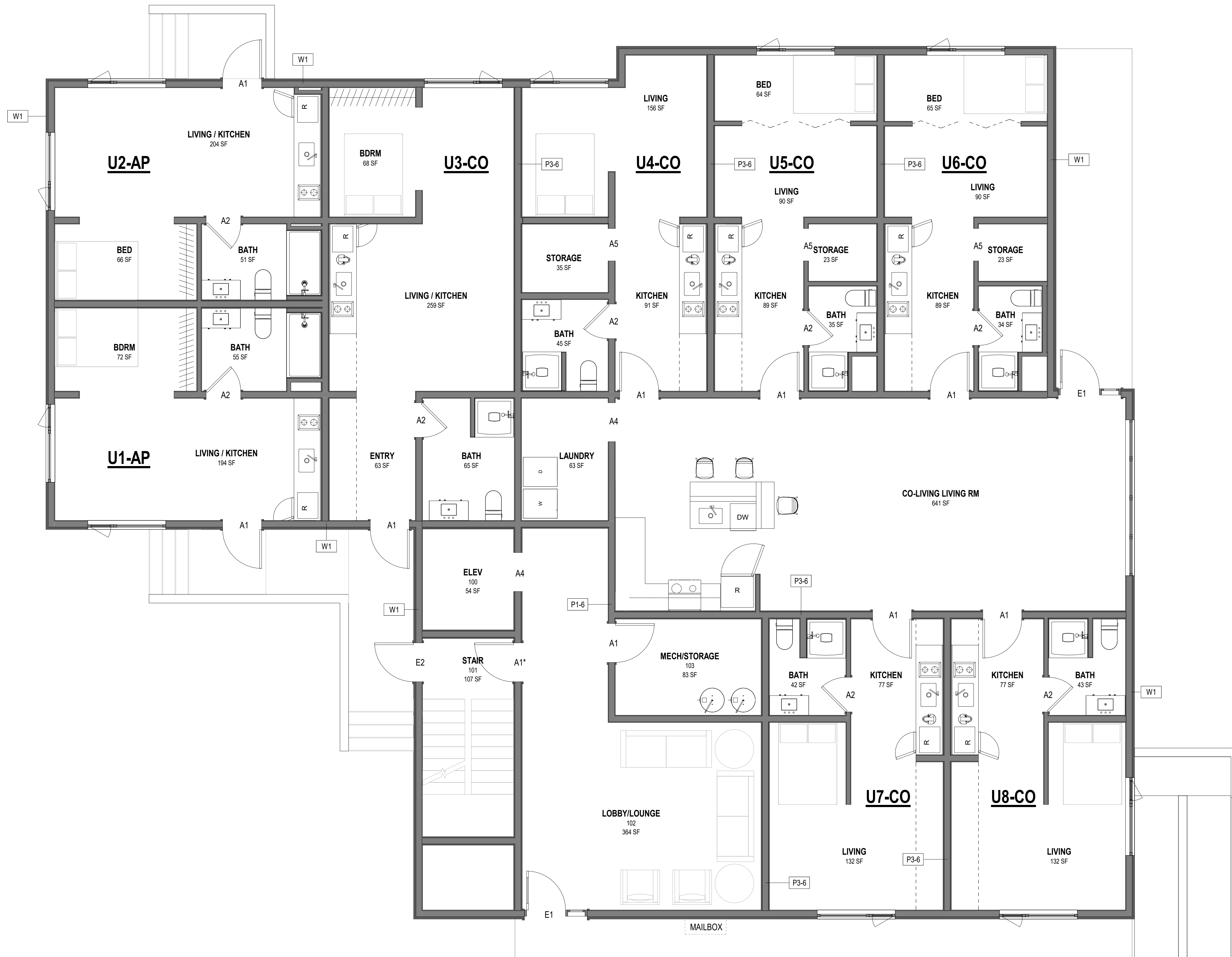
**BID PROGRESS SET**

DESIGN	Designer
DRAWN	Author
CHECKED	Checker
DATE	01.01.2022
PROJECT No.	
<b>NWA-2224</b>	
SHEET NUMBER	
<b>A2.4</b>	

9/20/2023 7:39:21 AM



IF THIS BAR DOES NOT MEASURE EXACTLY ONE INCH, THE SCALE OF THIS DRAWING HAS BEEN ALTERED DURING ITS PRODUCTION, AFFECTING ALL LABELED SCALES



- GENERAL NOTES:**
- CONTRACTOR SHALL FIELD VERIFY ACTUAL BUILDING CONDITIONS AND DIMENSIONS. WHERE DISCREPANCIES OR CONFLICTS ARE FOUND, NOTIFY ARCHITECT PRIOR TO COMMENCING WORK.
  - DO NOT SCALE OFF OF DRAWINGS.
  - DIMENSIONS ARE TO GRIDLINE, FACE OR CENTER OF FRAMING UNO.
  - ALL PARTITIONS ARE TYPE P-4, UNO.
  - WHERE DOOR OPENINGS ARE NOT DIMENSIONED, LOCATE DOOR OPENINGS TO ENSURE 3" MIN JAMB FRAMING.
  - THE MAJORITY OF ALL FFE ITEMS ARE OFOI AND ARE NOT IN CONTRACT, HOWEVER LIMITED ITEMS ARE SHOWN L DRAWINGS FOR COORDINATION PURPOSES. SEE FFE SHEETS FOR GENERAL FFE INFORMATION AND FFE SHEETS AND PROJECT MANUAL FOR CFCI FFE INFORMATION.

- SHEET NOTES:**
- xxxxspec item

- LEGEND:**
- (E) STRUCT. FRAMING TO REMAIN
  - (E) TO REMAIN
  - (N) WALL / PARTITION

**1** LEVEL 1 PARTIAL FLOOR PLAN A  
1/4" = 1'-0"

**NOT FOR CONSTRUCTION**

  
**NorthWind Architects, LLC**  
 126 Seward St  
 Juneau, AK 99801  
 Ph #907.586.6150  
 www.northwindarch.com

PROJECT : **STOWAWAY CORNERS**  
**505 SAWMILL CREEK RD**  
**SITKA, ALASKA**

SHEET TITLE : **ENLARGED FLOOR PLANS - 1A**  
**BID PROGRESS SET**

DESIGN	Designer
DRAWN	Author
CHECKED	Checker
DATE	01.01.2022
PROJECT No. <b>NWA-2224</b>	
SHEET NUMBER <b>A3.1</b>	

IF THIS BAR DOES NOT MEASURE EXACTLY ONE INCH, THE SCALE OF THIS DRAWING HAS BEEN ALTERED DURING ITS PRODUCTION, AFFECTING ALL LABELED SCALES

9/20/2023 7:39:22 AM

1 LEVEL 1 PARTIAL FLOOR PLAN B  
1/4" = 1'-0"



- GENERAL NOTES:**
1. CONTRACTOR SHALL FIELD VERIFY ACTUAL BUILDING CONDITIONS AND DIMENSIONS. WHERE DISCREPANCIES OR CONFLICTS ARE FOUND, NOTIFY ARCHITECT PRIOR TO COMMENCING WORK.
  2. DO NOT SCALE OFF OF DRAWINGS.
  3. DIMENSIONS ARE TO GRIDLINE, FACE OR CENTER OF FRAMING UNO.
  4. ALL PARTITIONS ARE TYPE P-4, UNO.
  5. WHERE DOOR OPENINGS ARE NOT DIMENSIONED, LOCATE DOOR OPENINGS TO ENSURE 3" MIN JAMB FRAMING.
  6. THE MAJORITY OF ALL FFE ITEMS ARE OFOI AND ARE NOT IN CONTRACT, HOWEVER LIMITED ITEMS ARE SHOWN IN DRAWINGS FOR COORDINATION PURPOSES. SEE FFE SHEETS FOR GENERAL FFE INFORMATION AND FFE SHEETS AND PROJECT MANUAL FOR CFCI FFE INFORMATION.

- SHEET NOTES:**
1. xxxxxxspec item

**U10-AP**

- LEGEND:**
- (E) STRUCT. FRAMING TO REMAIN
  - (E) TO REMAIN
  - (N) WALL / PARTITION

**NOT FOR CONSTRUCTION**

**N**  
NorthWind  
Architects, LLC

126 Seward St  
Juneau, AK 99801  
Ph #907.586.6150  
www.northwindarch.com

PROJECT :  
**STOWAWAY CORNERS**  
**505 SAWMILL CREEK RD**  
**SITKA, ALASKA**

SHEET TITLE :  
**ENLARGED FLOOR PLANS - 1B**  
**BID PROGRESS SET**

DESIGN	Designer
DRAWN	Author
CHECKED	Checker
DATE	01.01.2022
PROJECT No. <b>NWA-2224</b>	
SHEET NUMBER <b>A3.2</b>	

IF THIS BAR DOES NOT MEASURE EXACTLY ONE INCH, THE SCALE OF THIS DRAWING HAS BEEN ALTERED DURING ITS PRODUCTION, AFFECTING ALL LABELED SCALES



**1** LEVEL 1 PARTIAL FLOOR PLAN C  
1/4" = 1'-0"

- GENERAL NOTES:**
- CONTRACTOR SHALL FIELD VERIFY ACTUAL BUILDING CONDITIONS AND DIMENSIONS. WHERE DISCREPANCIES OR CONFLICTS ARE FOUND, NOTIFY ARCHITECT PRIOR TO COMMENCING WORK.
  - DO NOT SCALE OFF OF DRAWINGS.
  - DIMENSIONS ARE TO GRIDLINE, FACE OR CENTER OF FRAMING UNO.
  - ALL PARTITIONS ARE TYPE P-4, UNO.
  - WHERE DOOR OPENINGS ARE NOT DIMENSIONED, LOCATE DOOR OPENINGS TO ENSURE 3" MIN JAMB FRAMING.
  - THE MAJORITY OF ALL FFE ITEMS ARE OFOI AND ARE NOT IN CONTRACT, HOWEVER LIMITED ITEMS ARE SHOWN IN DRAWINGS FOR COORDINATION PURPOSES. SEE FFE SHEETS FOR GENERAL FFE INFORMATION AND FFE SHEETS AND PROJECT MANUAL FOR CFCI FFE INFORMATION.

- SHEET NOTES:**
- xxxxxspec item

- LEGEND:**
- (E) STRUCT. FRAMING TO REMAIN
  - (E) TO REMAIN
  - (N) WALL / PARTITION

**NOT FOR CONSTRUCTION**

  
**NorthWind**  
 Architects, LLC  
 126 Seward St  
 Juneau, AK 99801  
 Ph #907.586.6150  
 www.northwindarch.com

PROJECT :  
**STOWAWAY CORNERS**  
**505 SAWMILL CREEK RD**  
**SITKA, ALASKA**

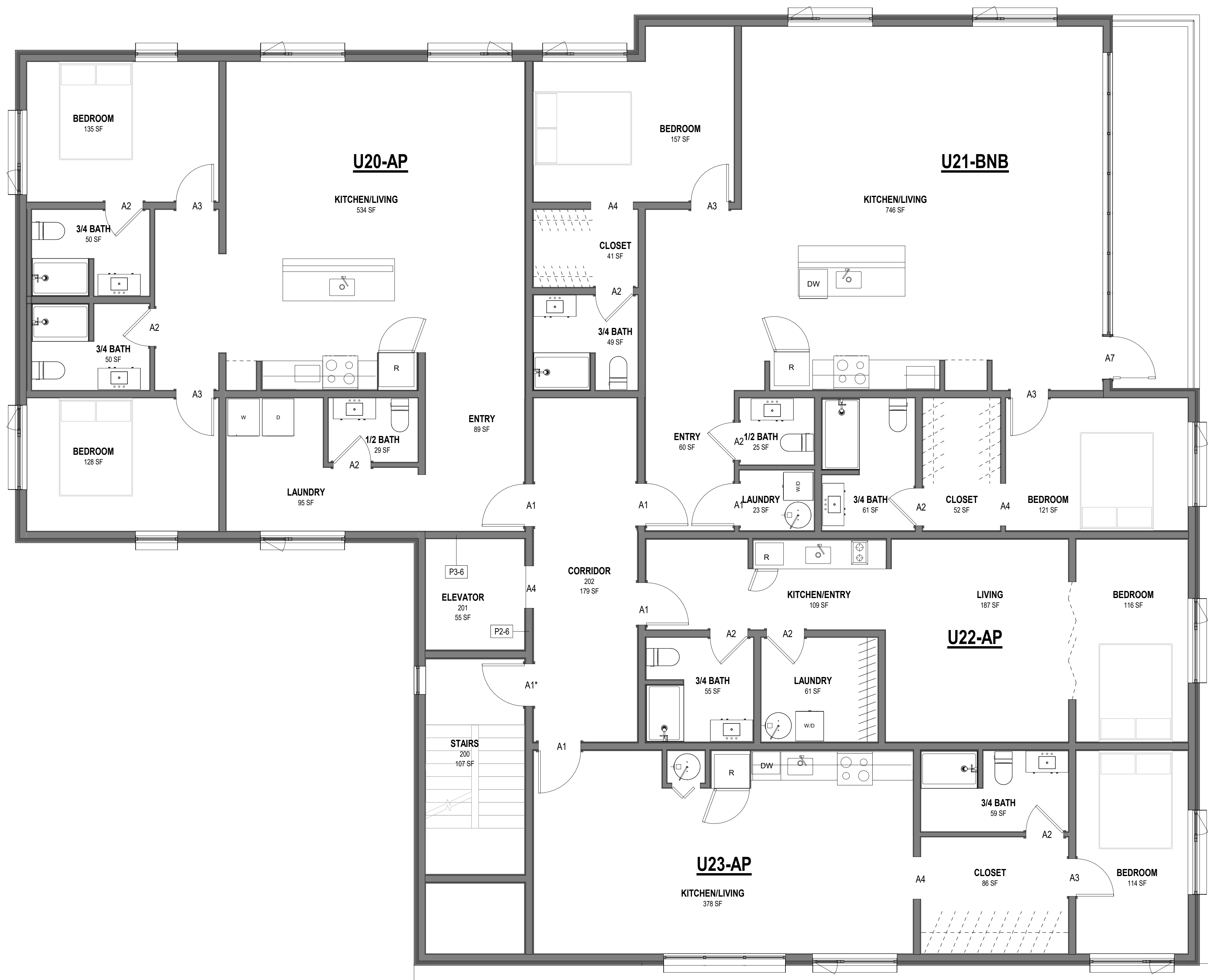
SHEET TITLE :  
**ENLARGED FLOOR PLANS - 1C**  
**BID PROGRESS SET**

DESIGN	Designer
DRAWN	Author
CHECKED	Checker
DATE	01.01.2022

PROJECT No.  
**NWA-2224**  
 SHEET NUMBER  
A3.3



IF THIS BAR DOES NOT MEASURE EXACTLY ONE INCH, THE SCALE OF THIS DRAWING HAS BEEN ALTERED DURING ITS PRODUCTION, AFFECTING ALL LABELED SCALES

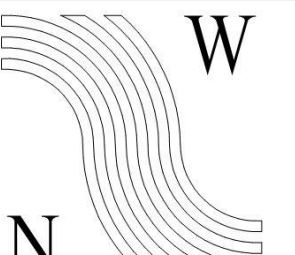


- GENERAL NOTES:**
1. CONTRACTOR SHALL FIELD VERIFY ACTUAL BUILDING CONDITIONS AND DIMENSIONS. WHERE DISCREPANCIES OR CONFLICTS ARE FOUND, NOTIFY ARCHITECT PRIOR TO COMMENCING WORK.
  2. DO NOT SCALE OFF OF DRAWINGS.
  3. DIMENSIONS ARE TO GRIDLINE, FACE OR CENTER OF FRAMING UNO.
  4. ALL PARTITIONS ARE TYPE P-4, UNO.
  5. WHERE DOOR OPENINGS ARE NOT DIMENSIONED, LOCATE DOOR OPENINGS TO ENSURE 3" MIN JAMB FRAMING.
  6. THE MAJORITY OF ALL FFE ITEMS ARE OFOI AND ARE NOT IN CONTRACT, HOWEVER LIMITED ITEMS ARE SHOWN IN DRAWINGS FOR COORDINATION PURPOSES. SEE FFE SHEETS FOR GENERAL FFE INFORMATION AND FFE SHEETS AND PROJECT MANUAL FOR CFCI FFE INFORMATION.

- SHEET NOTES:**
1. xxxxxxspec item

- LEGEND:**
- (E) STRUCT. FRAMING TO REMAIN
  - (E) TO REMAIN
  - (N) WALL / PARTITION

**NOT FOR CONSTRUCTION**

  
**NorthWind Architects, LLC**  
 126 Seward St  
 Juneau, AK 99801  
 Ph #907.586.6150  
 www.northwindarch.com

PROJECT : **STOWAWAY CORNERS**  
**505 SAWMILL CREEK RD**  
**SITKA, ALASKA**

SHEET TITLE : **ENLARGED FLOOR PLANS - 2A**  
**BID PROGRESS SET**

DESIGN	Designer
DRAWN	Author
CHECKED	Checker
DATE	01.01.2022
PROJECT No. <b>NWA-2224</b>	
SHEET NUMBER <b>A3.4</b>	

**1** LEVEL 2 PARTIAL FLOOR PLAN A  
1/4" = 1'-0"

9/20/2023 7:39:24 AM

IF THIS BAR DOES NOT MEASURE EXACTLY ONE INCH, THE SCALE OF THIS DRAWING HAS BEEN ALTERED DURING ITS PRODUCTION, AFFECTING ALL LABELED SCALES

9/20/2023 7:39:25 AM

1 LEVEL 2 PARTIAL FLOOR PLAN B  
1/4" = 1'-0"



**GENERAL NOTES:**

1. CONTRACTOR SHALL FIELD VERIFY ACTUAL BUILDING CONDITIONS AND DIMENSIONS. WHERE DISCREPANCIES OR CONFLICTS ARE FOUND, NOTIFY ARCHITECT PRIOR TO COMMENCING WORK.
2. DO NOT SCALE OFF OF DRAWINGS.
3. DIMENSIONS ARE TO GRIDLINE, FACE OR CENTER OF FRAMING UNO.
4. ALL PARTITIONS ARE TYPE P-4, UNO.
5. WHERE DOOR OPENINGS ARE NOT DIMENSIONED, LOCATE DOOR OPENINGS TO ENSURE 3" MIN JAMB FRAMING.
6. THE MAJORITY OF ALL FFE ITEMS ARE OFOI AND ARE NOT IN CONTRACT, HOWEVER LIMITED ITEMS ARE SHOWN L DRAWINGS FOR COORDINATION PURPOSES. SEE FFE SHEETS FOR GENERAL FFE INFORMATION AND FFE SHEETS AND PROJECT MANUAL FOR CFCI FFE INFORMATION.

**SHEET NOTES:**

1. xxxxxxspec item

**LEGEND:**

- (E) STRUCT. FRAMING TO REMAIN
- (E) TO REMAIN
- (N) WALL / PARTITION

**NOT FOR CONSTRUCTION**



126 Seward St  
Juneau, AK 99801  
Ph #907.586.6150  
www.northwindarch.com

PROJECT :  
**STOWAWAY CORNERS**  
**505 SAWMILL CREEK RD**  
**SITKA, ALASKA**

SHEET TITLE :  
**ENLARGED FLOOR PLANS - 2B**  
**BID PROGRESS SET**

DESIGN	Designer
DRAWN	Author
CHECKED	Checker
DATE	01.01.2022

PROJECT No.  
**NWA-2224**  
SHEET NUMBER

**A3.5**

IF THIS BAR DOES NOT MEASURE EXACTLY ONE INCH, THE SCALE OF THIS DRAWING HAS BEEN ALTERED DURING ITS PRODUCTION, AFFECTING ALL LABELED SCALES



1 LEVEL 2 PARTIAL FLOOR PLAN C  
1/4" = 1'-0"

**GENERAL NOTES:**

1. CONTRACTOR SHALL FIELD VERIFY ACTUAL BUILDING CONDITIONS AND DIMENSIONS. WHERE DISCREPANCIES OR CONFLICTS ARE FOUND, NOTIFY ARCHITECT PRIOR TO COMMENCING WORK.
2. DO NOT SCALE OFF OF DRAWINGS.
3. DIMENSIONS ARE TO GRIDLINE, FACE OR CENTER OF FRAMING UNO.
4. ALL PARTITIONS ARE TYPE P-4, UNO.
5. WHERE DOOR OPENINGS ARE NOT DIMENSIONED, LOCATE DOOR OPENINGS TO ENSURE 3" MIN JAMB FRAMING.
6. THE MAJORITY OF ALL FFE ITEMS ARE OFOI AND ARE NOT IN CONTRACT, HOWEVER LIMITED ITEMS ARE SHOWN L DRAWINGS FOR COORDINATION PURPOSES. SEE FFE SHEETS FOR GENERAL FFE INFORMATION AND FFE SHEETS AND PROJECT MANUAL FOR CFCI FFE INFORMATION.

**SHEET NOTES:**

1. xxxxxxspec item

**LEGEND:**

- (E) STRUCT. FRAMING TO REMAIN
- (E) TO REMAIN
- (N) WALL / PARTITION

**NOT FOR CONSTRUCTION**

**N**  
NorthWind  
Architects, LLC

126 Seward St  
Juneau, AK 99801  
Ph #907.586.6150  
www.northwindarch.com

PROJECT :  
**STOWAWAY CORNERS**  
**505 SAWMILL CREEK RD**  
**SITKA, ALASKA**

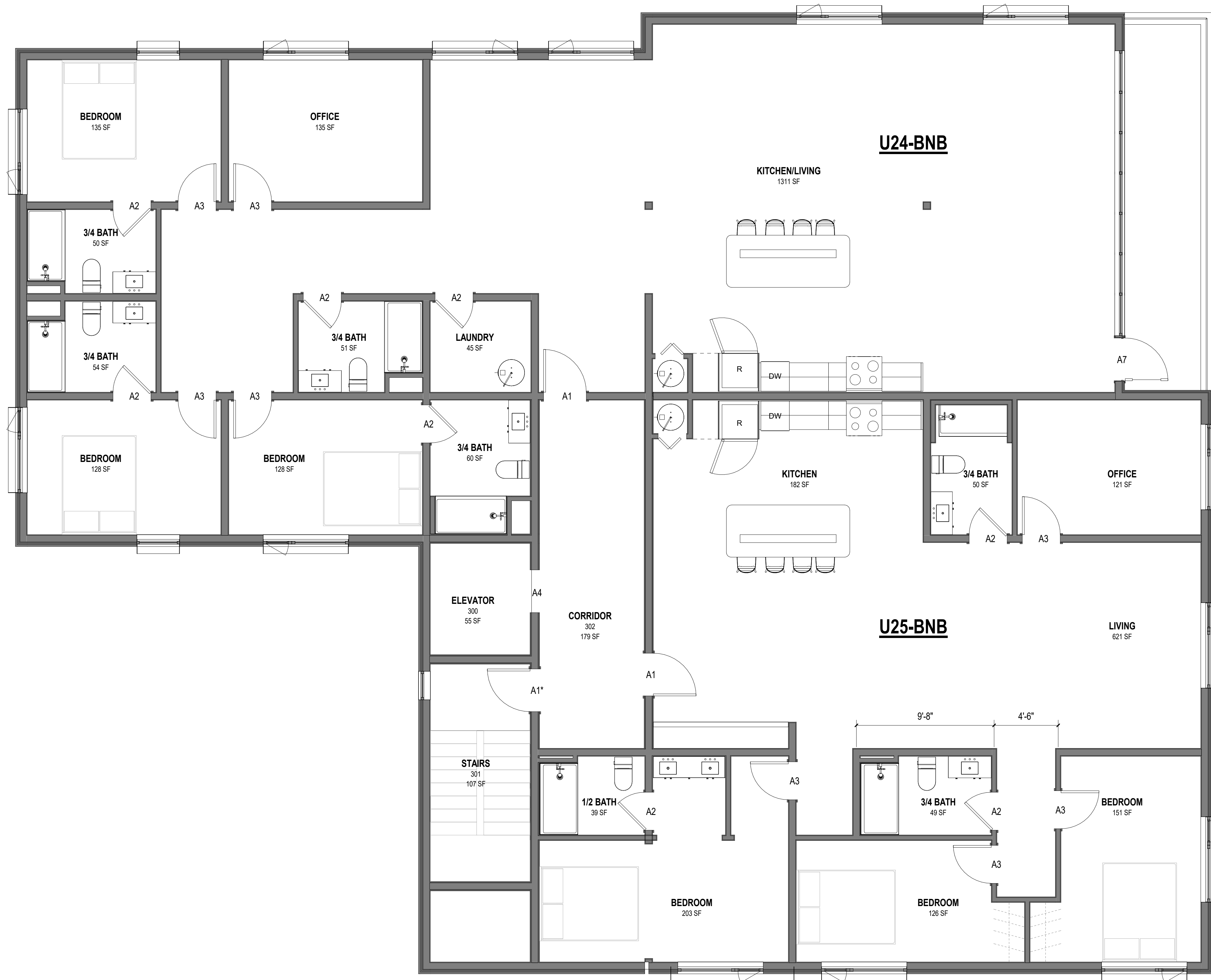
SHEET TITLE :  
**ENLARGED FLOOR PLANS - 2C**  
**BID PROGRESS SET**

DESIGN	Designer
DRAWN	Author
CHECKED	Checker
DATE	01.01.2022
PROJECT No. <b>NWA-2224</b>	
SHEET NUMBER <b>A3.6</b>	



IF THIS BAR DOES NOT MEASURE EXACTLY ONE INCH, THE SCALE OF THIS DRAWING HAS BEEN ALTERED DURING ITS PRODUCTION, AFFECTING ALL LABELED SCALES

9/20/2023 7:39:27 AM



**GENERAL NOTES:**

1. CONTRACTOR SHALL FIELD VERIFY ACTUAL BUILDING CONDITIONS AND DIMENSIONS. WHERE DISCREPANCIES OR CONFLICTS ARE FOUND, NOTIFY ARCHITECT PRIOR TO COMMENCING WORK.
2. DO NOT SCALE OFF OF DRAWINGS.
3. DIMENSIONS ARE TO GRIDLINE, FACE OR CENTER OF FRAMING UNO.
4. ALL PARTITIONS ARE TYPE P-4, UNO.
5. WHERE DOOR OPENINGS ARE NOT DIMENSIONED, LOCATE DOOR OPENINGS TO ENSURE 3" MIN JAMB FRAMING.
6. THE MAJORITY OF ALL FFE ITEMS ARE OFOI AND ARE NOT IN CONTRACT, HOWEVER LIMITED ITEMS ARE SHOWN L DRAWINGS FOR COORDINATION PURPOSES. SEE FFE SHEETS FOR GENERAL FFE INFORMATION AND FFE SHEETS AND PROJECT MANUAL FOR CFCI FFE INFORMATION.

**SHEET NOTES:**

1. xxxxxxspec item

**LEGEND:**

- (E) STRUCT. FRAMING TO REMAIN
- (E) TO REMAIN
- (N) WALL / PARTITION

**1** LEVEL 3 PARTIAL FLOOR PLAN A  
1/4" = 1'-0"

**NOT FOR CONSTRUCTION**

**N**  
NorthWind  
Architects, LLC

126 Seward St  
Juneau, AK 99801  
Ph #907.586.6150  
www.northwindarch.com

PROJECT :  
**STOWAWAY CORNERS**  
**505 SAWMILL CREEK RD**  
**SITKA, ALASKA**

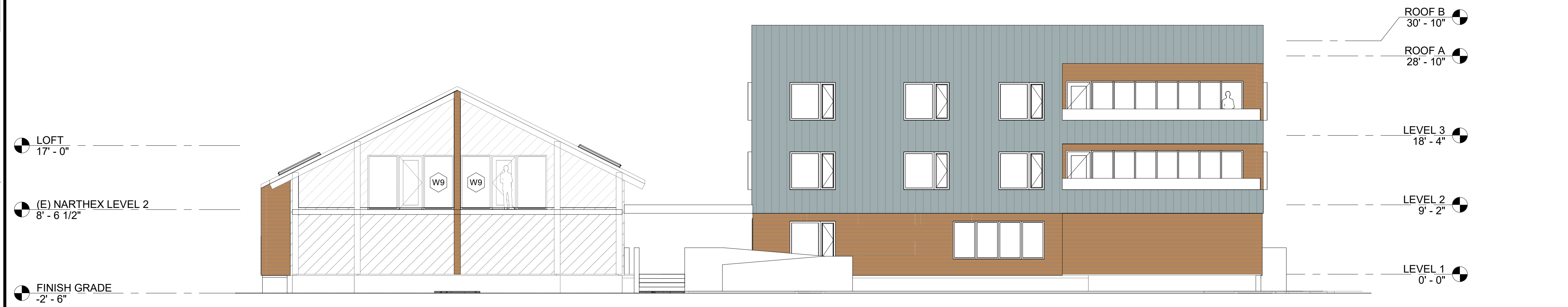
SHEET TITLE :  
**ENLARGED FLOOR PLANS - 3A**  
**BID PROGRESS SET**

DESIGN	Designer
DRAWN	Author
CHECKED	Checker
DATE	01.01.2022

PROJECT No.  
**NWA-2224**  
SHEET NUMBER  
**A3.7**

1"

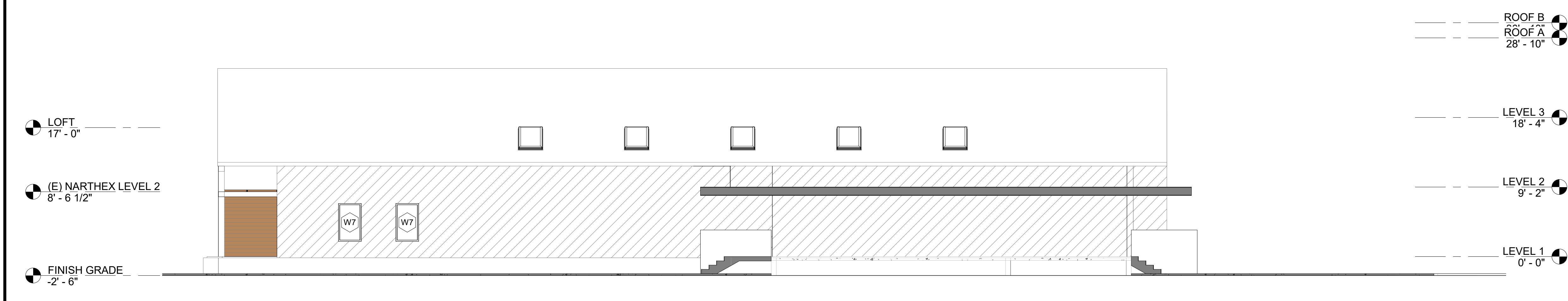
IF THIS BAR DOES NOT MEASURE EXACTLY ONE INCH, THE SCALE OF THIS DRAWING HAS BEEN ALTERED DURING ITS PRODUCTION, AFFECTING ALL LABELED SCALES



1 BUILDING ELEVATION S  
1/8" = 1'-0"



2 BUILDING ELEVATION EAST - A  
1/8" = 1'-0"



3 BUILDING ELEVATION EAST - B  
1/8" = 1'-0"

- GENERAL NOTES:**
- CONTRACTOR SHALL FIELD VERIFY ACTUAL BUILDING CONDITIONS AND DIMENSIONS. WHERE DISCREPANCIES OR CONFLICTS ARE FOUND, NOTIFY ARCHITECT PRIOR TO COMMENCING WORK.
  - DO NOT SCALE OFF OF DRAWINGS.
  - DIMENSIONS ARE TO GRIDLINE, FACE OR CENTER OF FRAMING UNO.

- SHEET NOTES:**
- XSPEC XSPEC

**NOT FOR CONSTRUCTION**

**N**  
NorthWind  
Architects, LLC

126 Seward St  
Juneau, AK 99801  
Ph #907.586.6150  
www.northwindarch.com

PROJECT :

**STOWAWAY CORNERS**

**505 SAWMILL CREEK RD**  
**SITKA, ALASKA**

SHEET TITLE :

**BUILDING ELEVATIONS**

**BID PROGRESS SET**

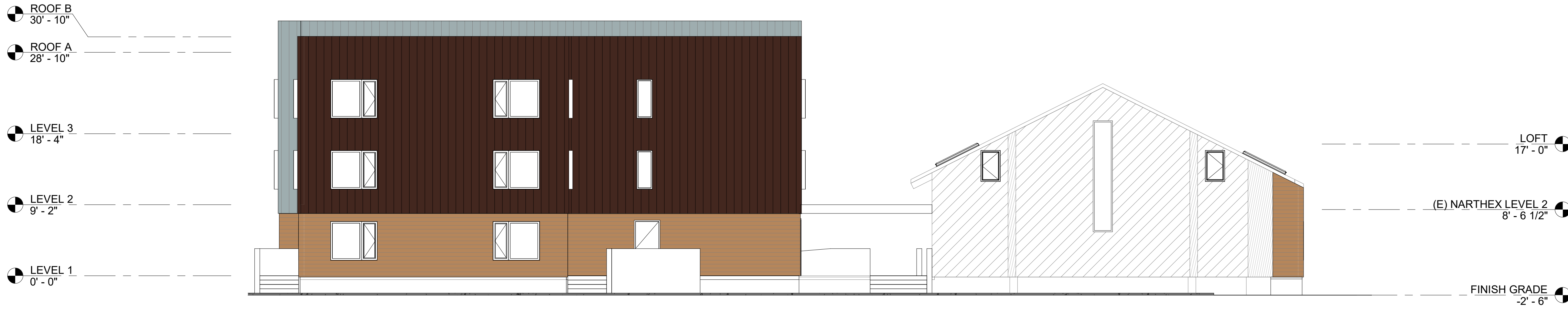
DESIGN	Designer
DRAWN	Author
CHECKED	Checker
DATE	01.01.2022

PROJECT No.  
**NWA-2224**

SHEET NUMBER  
**A5.1**

9/20/2023 7:36:30 AM

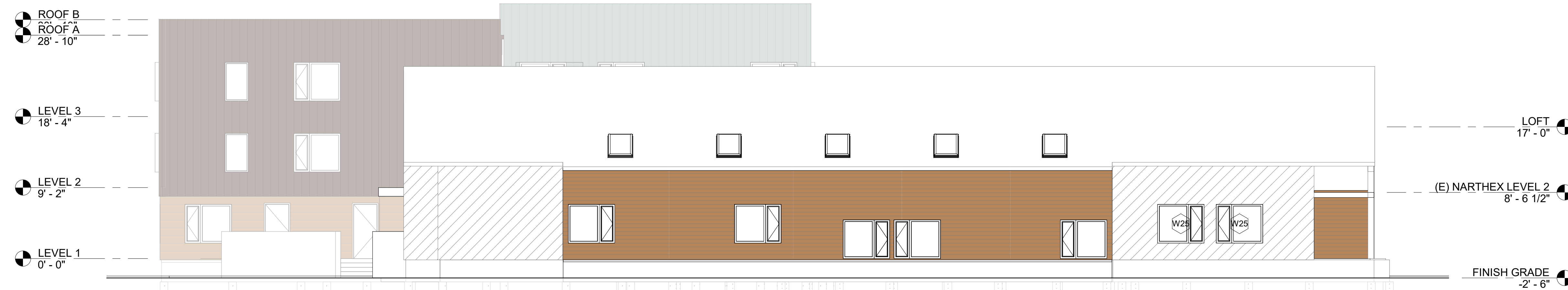
1" IF THIS BAR DOES NOT MEASURE EXACTLY ONE INCH, THE SCALE OF THIS DRAWING HAS BEEN ALTERED DURING ITS PRODUCTION, AFFECTING ALL LABELED SCALES



1 BUILDING ELEVATION N  
1/8" = 1'-0"



2 BUILDING ELEVATION WEST - B  
1/8" = 1'-0"



3 BUILDING ELEVATION WEST - A  
1/8" = 1'-0"

**GENERAL NOTES:**

1. CONTRACTOR SHALL FIELD VERIFY ACTUAL BUILDING CONDITIONS AND DIMENSIONS. WHERE DISCREPANCIES OR CONFLICTS ARE FOUND, NOTIFY ARCHITECT PRIOR TO COMMENCING WORK.
2. DO NOT SCALE OFF OF DRAWINGS.
3. DIMENSIONS ARE TO GRIDLINE, FACE OR CENTER OF FRAMING UNO.

**SHEET NOTES:**

1. XSPEC XPSEC

**NOT FOR CONSTRUCTION**



126 Seward St  
Juneau, AK 99801  
Ph #907.586.6150  
www.northwindarch.com

PROJECT :  
**STOWAWAY CORNERS**  
**505 SAWMILL CREEK RD**  
**SITKA, ALASKA**

SHEET TITLE :  
**BUILDING ELEVATIONS**  
**BID PROGRESS SET**

DESIGN	Designer
DRAWN	Author
CHECKED	Checker
DATE	01.01.2022

PROJECT No.  
**NWA-2224**  
SHEET NUMBER

**A5.2**