

1 STANDARD SINGLE UNIT FLOOR PLAN  
3/4" = 1'-0"

GENERAL NOTES:

1. CONTRACTOR SHALL FIELD VERIFY ACTUAL BUILDING CONDITIONS AND DIMENSIONS. WHERE DISCREPANCIES OR CONFLICTS ARE FOUND, NOTIFY ARCHITECT PRIOR TO COMMENCING WORK.
2. DO NOT SCALE OFF OF DRAWINGS.
3. DIMENSIONS ARE TO GRIDLINE, FACE OR CENTER OF FRAMING UNO.
4. WHERE DOOR OPENINGS ARE NOT DIMENSIONED, LOCATE DOOR OPENINGS TO ENSURE 3" MIN JAMB FRAMING.

01/17/2024

N

NorthWind Architects, LLC

126 Seward St  
Juneau, AK 99801  
Ph #907.586.6150  
www.northwindarch.com

1" ACTUAL

IF THE ABOVE DIMENSION DOES NOT MEASURE ONE INCH (1") EXACTLY, THIS DRAWING WILL HAVE BEEN ENLARGED OR REDUCED, AFFECTING ALL LABEL SCALES.

Hitx'i Sáani 'Little Houses' Community

SITKA HOMELESS COALITION  
US Survey 3895 Lot 3  
SITKA, ALASKA

SHEET TITLE:  
STANDARD UNIT  
FLOOR PLAN

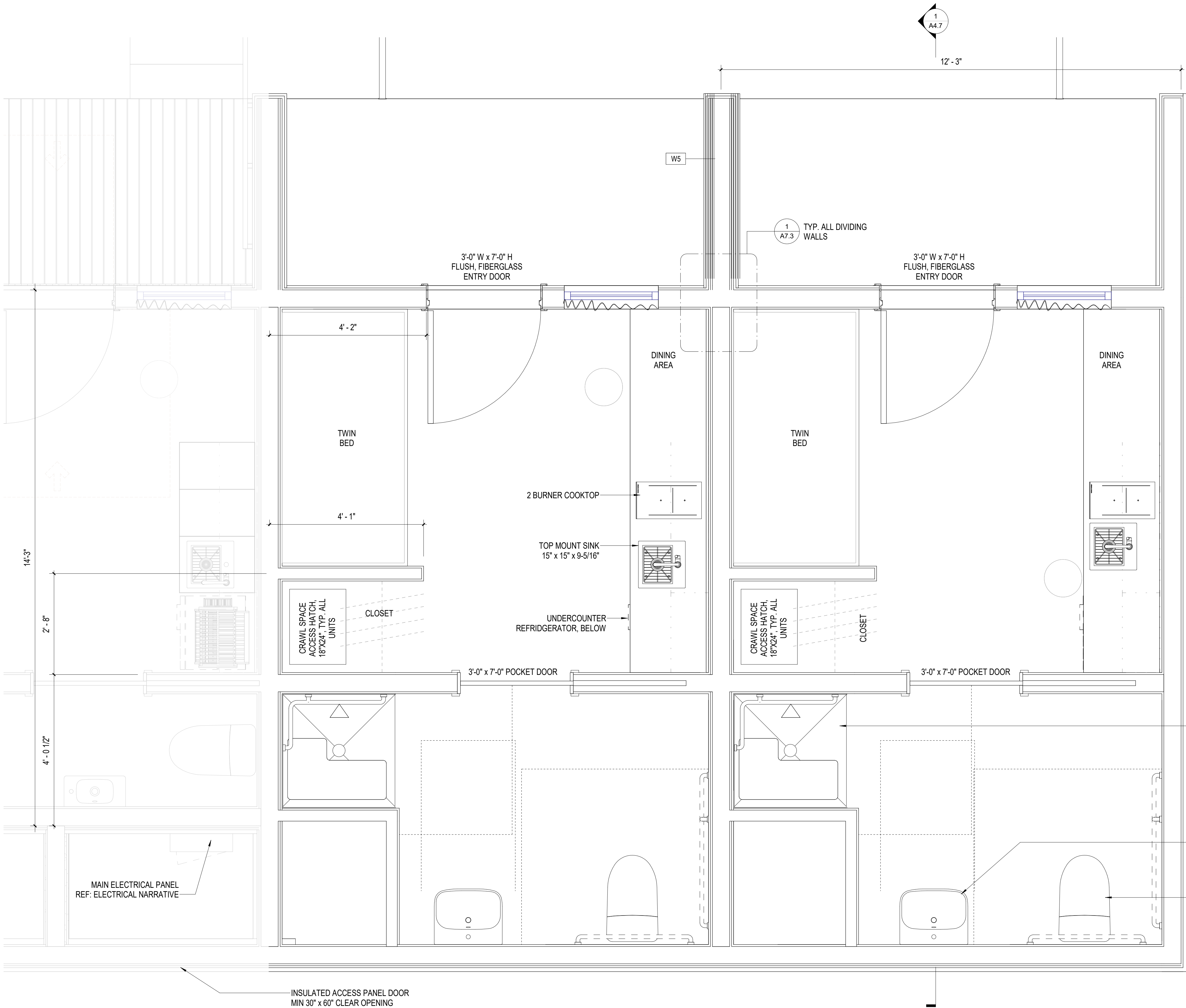
CHECKED	Approver
DRAWN	Author

---

issue	date	description
-------	------	-------------

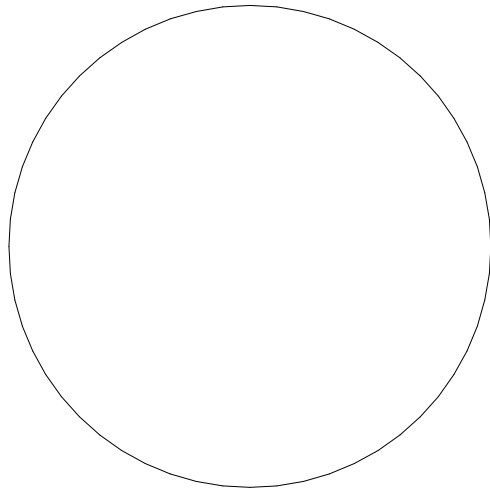
SHEET #  
A2.0

ISSUE DATE  
01/17/2024

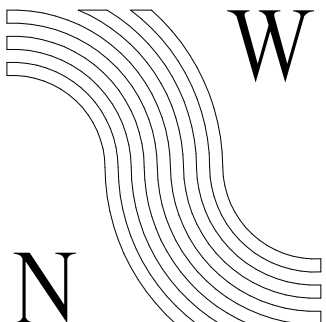


GENERAL NOTES:

1. CONTRACTOR SHALL FIELD VERIFY ACTUAL BUILDING CONDITIONS AND DIMENSIONS. WHERE DISCREPANCIES OR CONFLICTS ARE FOUND, NOTIFY ARCHITECT PRIOR TO COMMENCING WORK.
2. DO NOT SCALE OFF OF DRAWINGS.
3. DIMENSIONS ARE TO GRIDLINE, FACE OR CENTER OF FRAMING UNO.
4. WHERE DOOR OPENINGS ARE NOT DIMENSIONED, LOCATE DOOR OPENINGS TO ENSURE 3" MIN JAMB FRAMING.



01/17/2024



NorthWind  
Architects, LLC

126 Seward St  
Juneau, AK 99801  
Ph #907.586.6150  
www.northwindarch.com

IF THE ABOVE DIMENSION DOES NOT MEASURE ONE INCH (1") EXACTLY, THIS DRAWING WILL HAVE BEEN ENLARGED OR REDUCED, AFFECTING ALL LABEL SCALES.

Hitx'i Sáani 'Little Houses' Community

SITKA HOMELESS COALITION  
US Survey 3895 Lot 3  
SITKA, ALASKA

SHEET TITLE:  
ADA UNIT FLOOR  
PLAN

CHECKED	Approver	
DRAWN	Author	
<hr/>		
issue	date	description

SHEET #

A2.1

ISSUE DATE

01/17/2024

3'-0" D x 3'-0" W ADA COMPLIANT ONE  
PIECE SHOWER  
• CONTROL WALL ON PLAN NORTH  
SIDE PER ANSI A117.1 608.2.1  
• GRAB BARS PROVIDED PER ANSI  
A117.1 608.3.1

WALL MOUNT VANITY SINK WITH MEDICINE  
CABINET/MIRROR ABOVE  
• BOD: KOHLER MODERNLIFE-K-77767-1-0  
• MOUNTED 34" AFF MAXIMUM

FLOOR MOUNT TOILET  
1-PIECE HIGH EFFICIENCY DUAL FLUSH