

Mt. Edgecumbe Medical Center

Construction Update

Committed to Bringing High-Quality Care Closer to Home



Our Purpose

MISSION

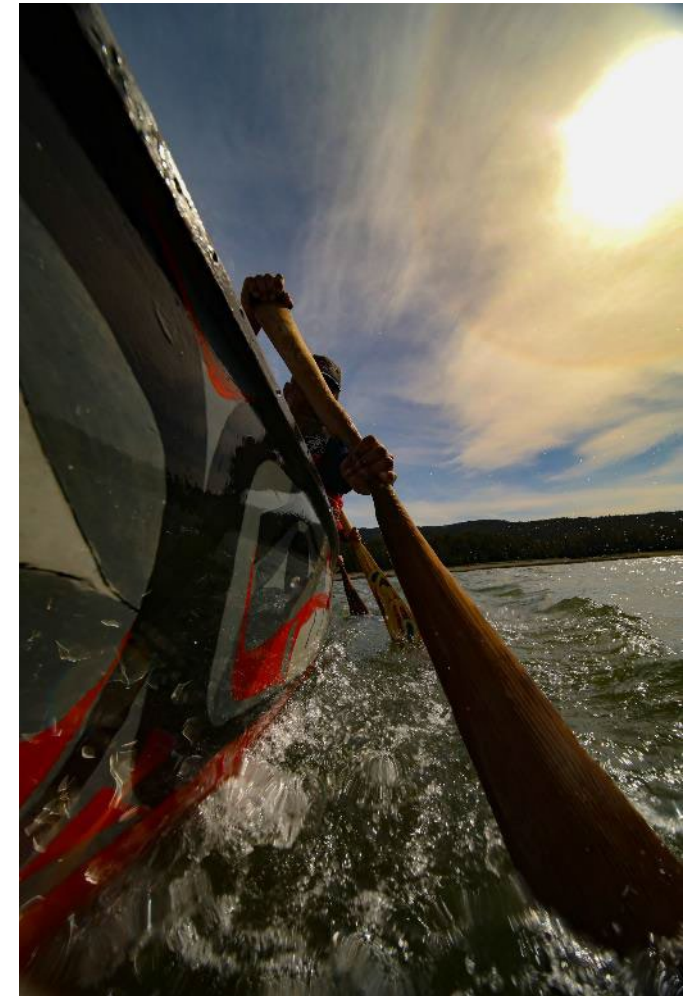
Alaska Native People working in partnership to provide the best healthcare for our communities.

VISION

Partnering with our communities to promote a healthy balance of mind, body and spirit.

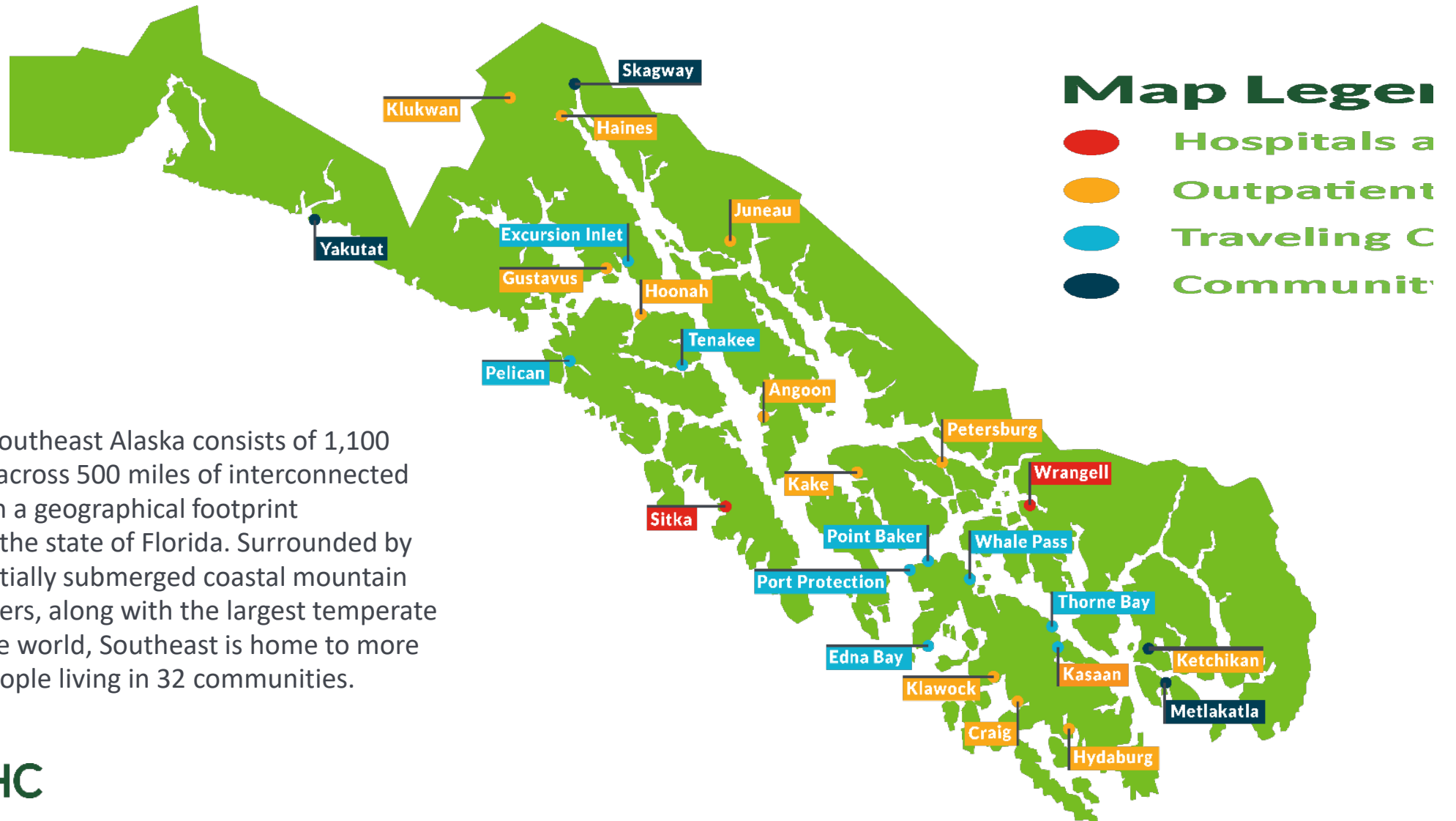
VALUES

- Respect
- Cultural Identity
- Service
- Professionalism
- Compassion





Services Map



The region of Southeast Alaska consists of 1,100 islands spread across 500 miles of interconnected waterways with a geographical footprint comparable to the state of Florida. Surrounded by ice fields, a partially submerged coastal mountain range and glaciers, along with the largest temperate rainforest in the world, Southeast is home to more than 70,000 people living in 32 communities.

SEARHC at a Glance

- SEARHC provides healthcare in **26** communities in Southeast Alaska
- SEARHC operates two Critical Access Hospitals (CAH):
 - **Mt. Edgecumbe Medical Center (MEMC)**, a 25-bed hospital providing acute care, critical care, obstetrics, surgery, perioperative care and transitional care.
 - 19 long-term care beds
 - **Wrangell Medical Center (WMC)**, an 8-bed hospital providing acute care and transitional care.
 - 18 long-term care beds

1,504

SEARHC Employees

26

SEARHC Communities

140

SEARHC Providers



2023 Year in Numbers

Total Clinic Visits* – **118,058**

*Inclusive of Primary Care, Urgent Care, Specialty Care, telehealth and other clinic visits

Behavioral Health Visits – **71,583**

Dental Visits – **40,603**

Physical Rehabilitation Encounters – **34,541**

Optometry Visits – **5,931**

Inpatient Admissions – **924**

Observation Days – **1,664**

Emergency Room Visits – **5,976**

Surgical Procedures – **1,908**

Swing Bed Admissions – **93**

Long-Term Care Days – **10,657**

Inpatient Admissions – **924**

Births – **116**

Laboratory Tests – **620,284**

Prescriptions Filled – **287,797**

Radiology Images – **29,436**



View 2024: SEARHC Strategic Goals

Employer & Provider of Choice

- Employer of Choice
- Provider of Choice
- SEARHC Awareness

Seamless Healthcare Delivery

- Continue to Expand Specialty Services
- Complete Primary Care Redesign
- Complete Behavioral Health Redesign
- Identify Ways to Further Utilize Technology to Enhance Patient Care

Intentional & Strategic Growth

- Juneau Expansion
- Complete Construction of New Hospital in Sitka
- Continue to Build on Strategic Partnerships
- Evaluate Other Strategic Growth Opportunities

SEARHC operates the following clinics and services:

- **Mt. Edgecumbe Medical Center:** Hospital Services, Primary Care, Dental, Optometry, Specialty Care, Rehabilitation, Laboratory, Pharmacy and Imaging
- **Sitka Medical Center:** Primary Care, Urgent Care and Laboratory Services
- **Opioid Treatment Clinic:** Evidence-based, medicine-assisted treatment
- **Sitka Behavioral Health Clinic:** Comprehensive Addiction Services, Psychiatry, Individual & Family Therapy, Wellness Program and Case Management
- **Sitka Long-Term Care:** Professional, skilled nursing services in a protected, homelike environment
- **Mountainside Rehabilitation Clinic:** Physical Therapy, Speech Language Pathology and Occupational Therapy





Project History

SEARHC applied for the Joint Venture Construction Program (JVCP) with the Indian Health Service (IHS) in 2020

SEARHC was awarded the Joint Venture and entered into a Joint Venture Agreement (JVA) with IHS for the new hospital in 2021

As part of the JVA, SEARHC funds the construction of the facility and when the project is completed, SEARHC will receive additional long-term funding from IHS for the operations and maintenance of the new facility

Construction began in 2022

Design was completed in 2023



Mt. Edgecumbe Medical Center
Groundbreaking June 2022



Building Overview

- **Groundbreaking: June 2022**
 - Square Footage: 234,528
 - Number of Floors: 5
- **Construction – IN HIGH GEAR!**
 - Crew size has increased to a daily average of 125 with a total of 11 trades actively working onsite
 - Roofing is complete; elevators are installed; electrical, mechanical, plumbing, sprinkler, insulation and drywall contractors are underway; paint to follow



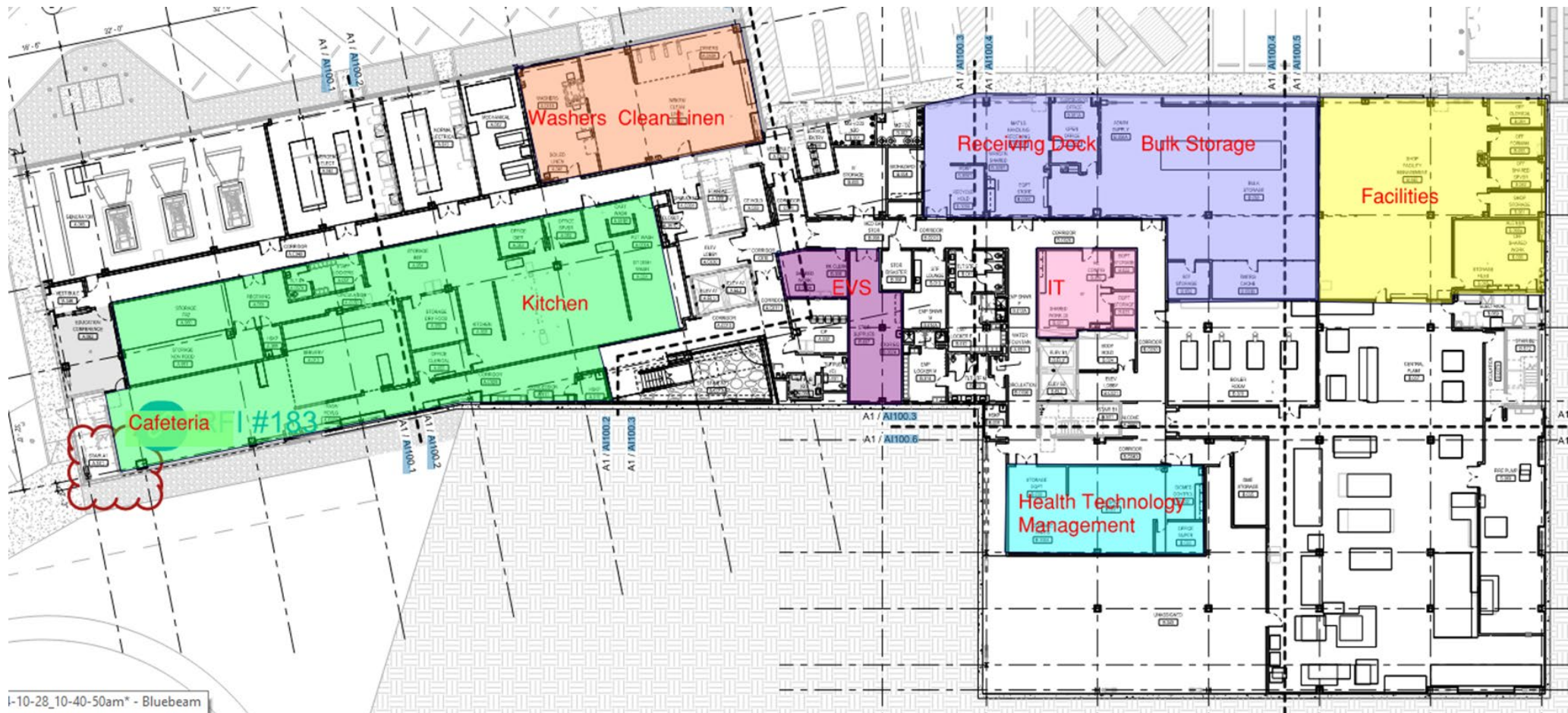


Stacking Diagram

Level 4	Administration		
Level 3	Acute Care, ICU, Rehab Gym	Check-In, Waiting	Labor & Delivery, SPD, Surgery
Level 2	Primary Care, Urgent Care, Behavioral Health, Blood Draw	Bridge	Audiology, Specialty Care, Dental, Infusion, Medical Nutrition Srv.
Level 1	Physical Rehabilitation, Lab, Pharmacy	Main Lobby, Registration	Imaging, Emergency Department, Optometry, Respiratory Therapy
Level G	Cafeteria, Kitchen, Washers, Clean Linen	Receiving Dock, Bulk Storage, Health Technology Management, Facilities, EVS, IT	
	Building A	Building B	

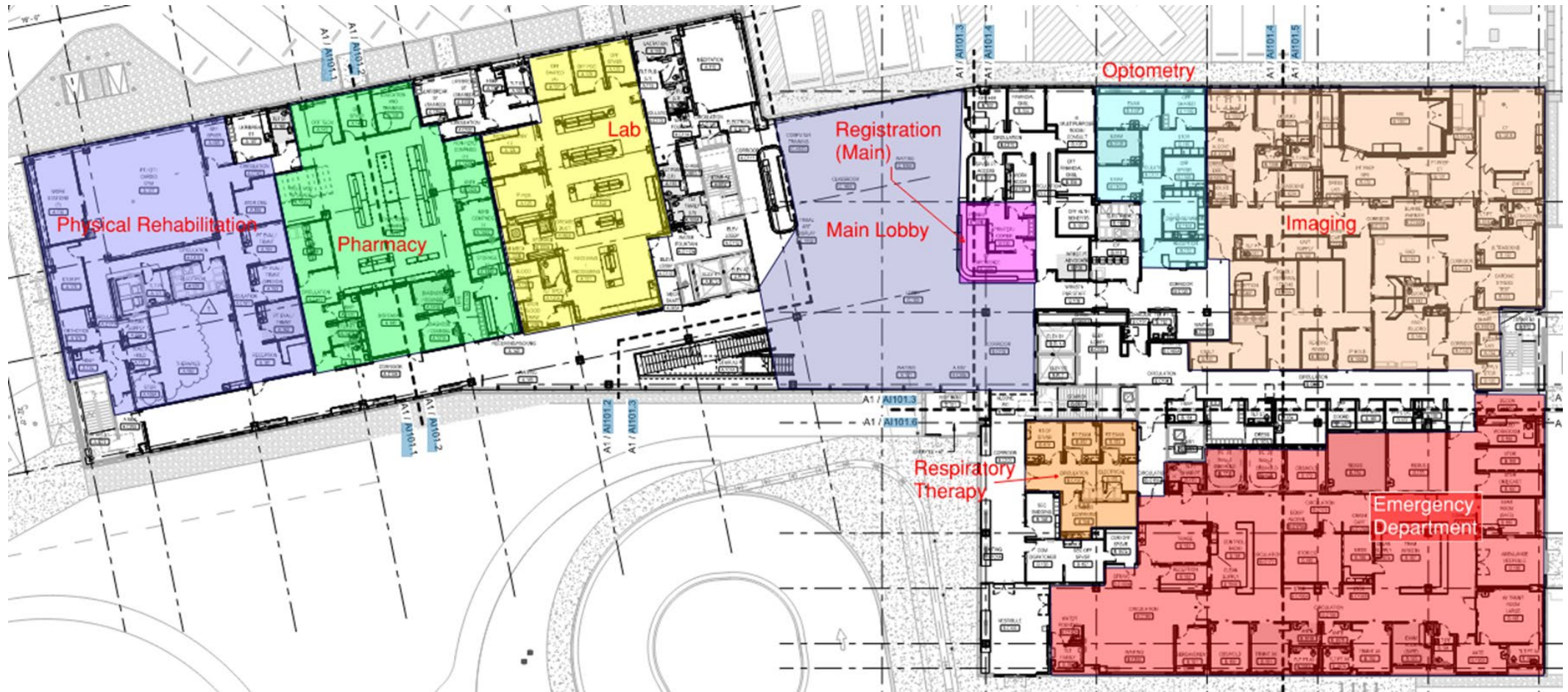


Level G



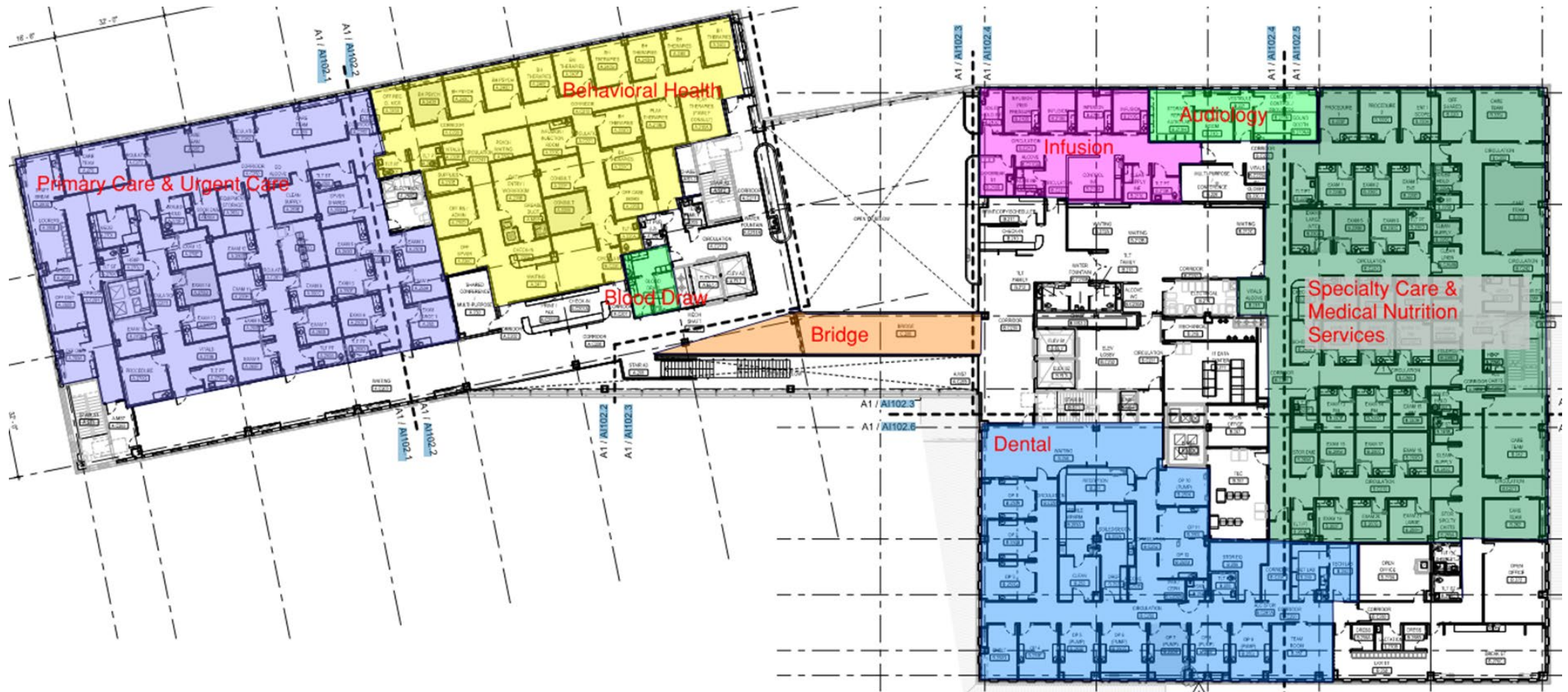


Level 1



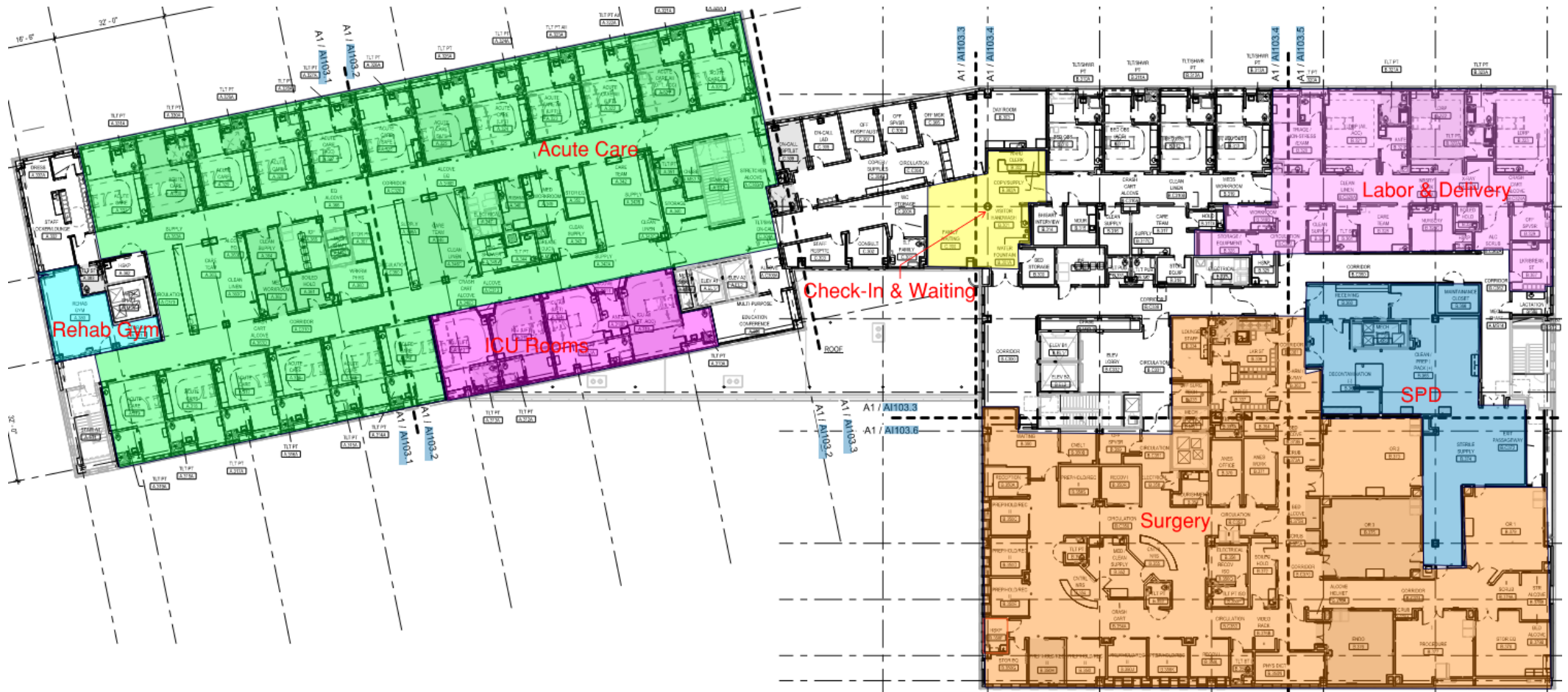


Level 2





Level 3





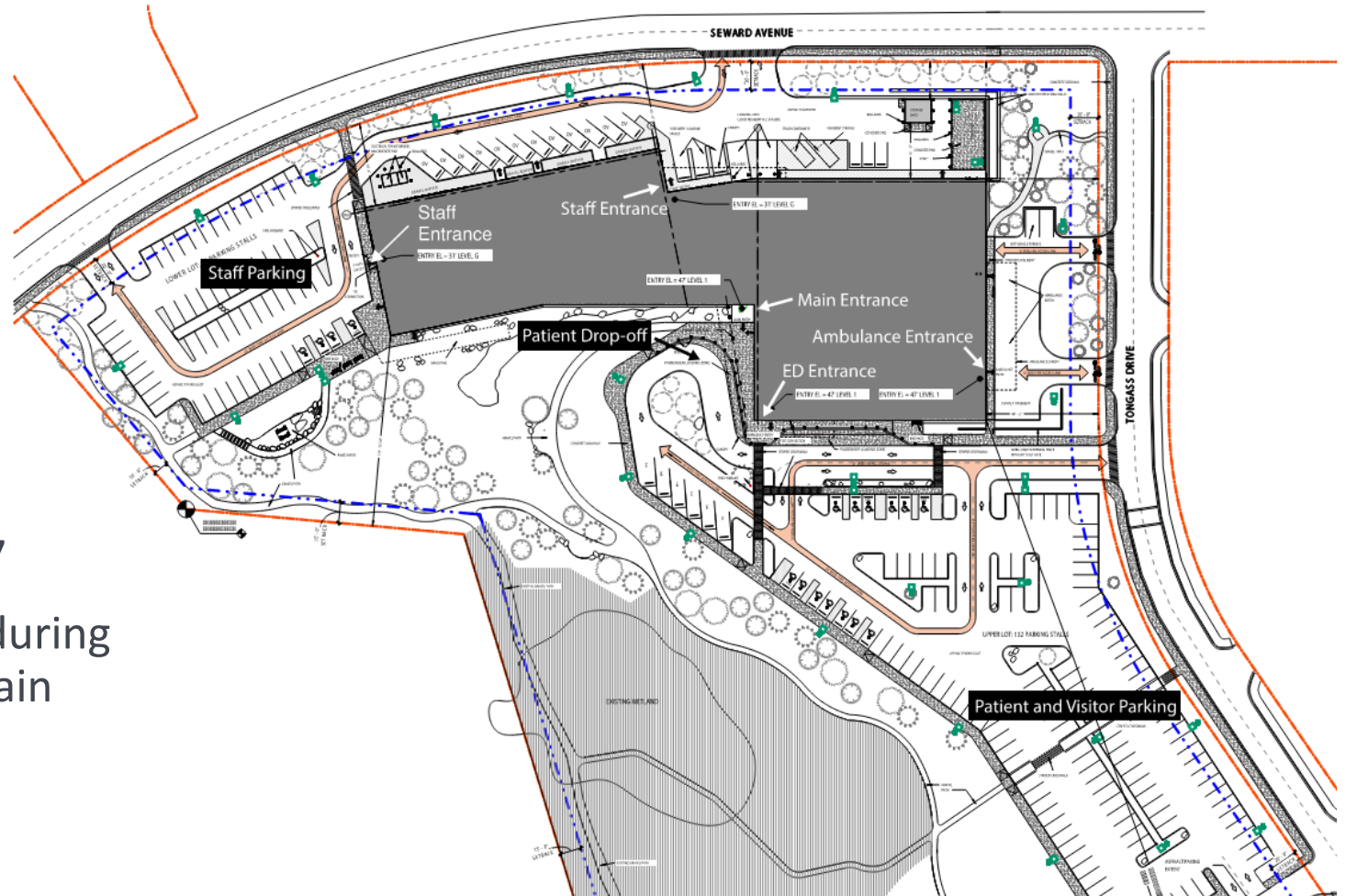


Building Access Points



Staff can access the building 24/7

Patients can access the building during operational hours through the main entrance and access the building through the ED entrance 24/7





Operational Updates

The building will be open **seven days a week**, including holidays and weekends

Acute Care, ICU, L&D, ED, and Urgent Care will be open seven days a week

Department	Normal Operational Days	Inpatient or ED Coverage	After Hours Coverage
Outpatient Clinics	Monday-Friday		
Infusion	Monday-Friday		
Urgent Care	7 days a week		
Surgical Services	Monday-Friday		X
Imaging	Monday-Friday	X	X
Lab	Monday-Friday	X	X
Blood Draw	7 days a week		
Pharmacy	Monday-Saturday	X	X
Physical Rehab	Monday-Friday	X	



Patient & Visitor Amenities



Patient Drop Off & Pick Up at Main Entrance & ED Entrance



Expanded Patient Parking



Single Occupancy Inpatient Rooms with adequate space for visitors



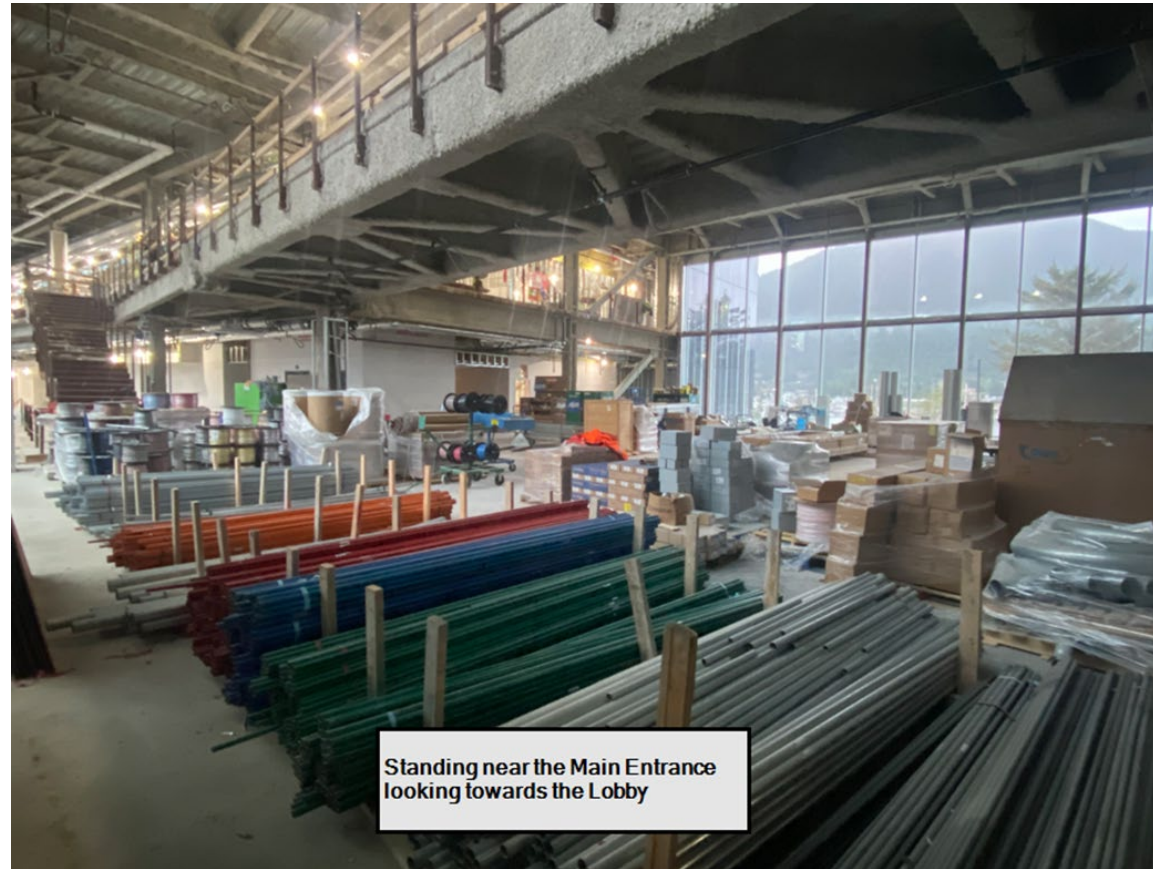
Café and Concessions



Lactation Rooms



Construction Photos



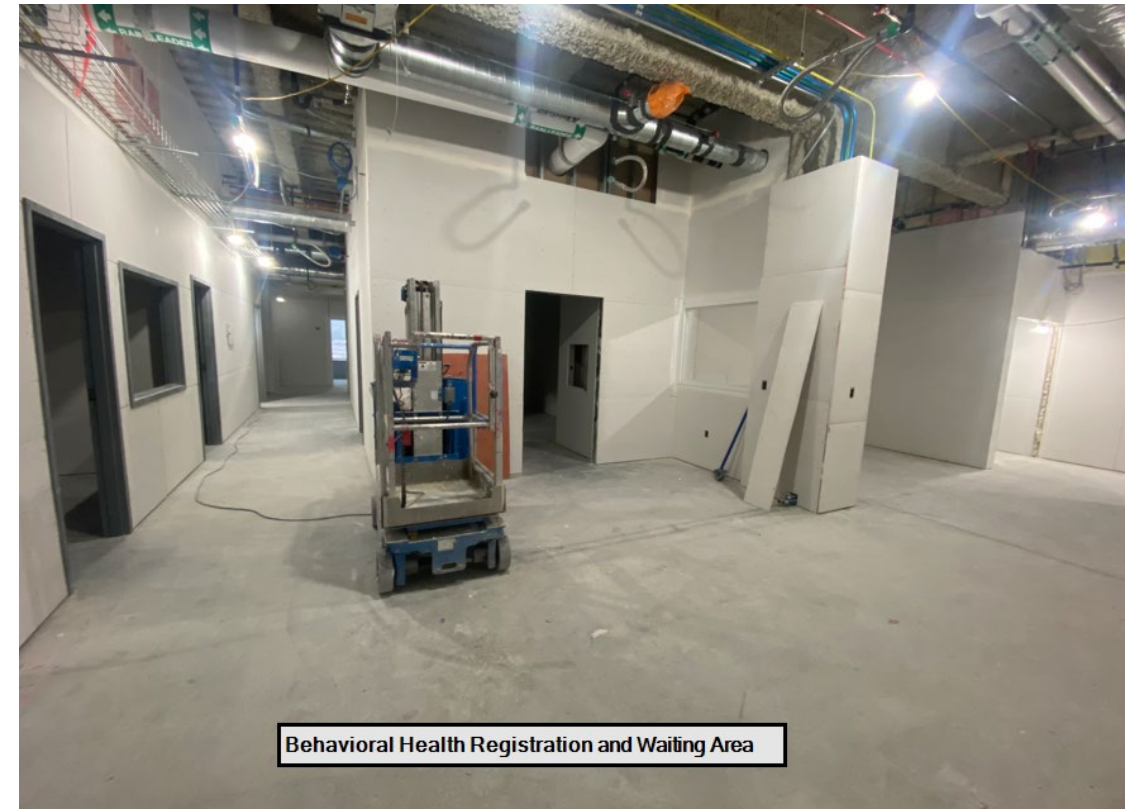


Construction Photos



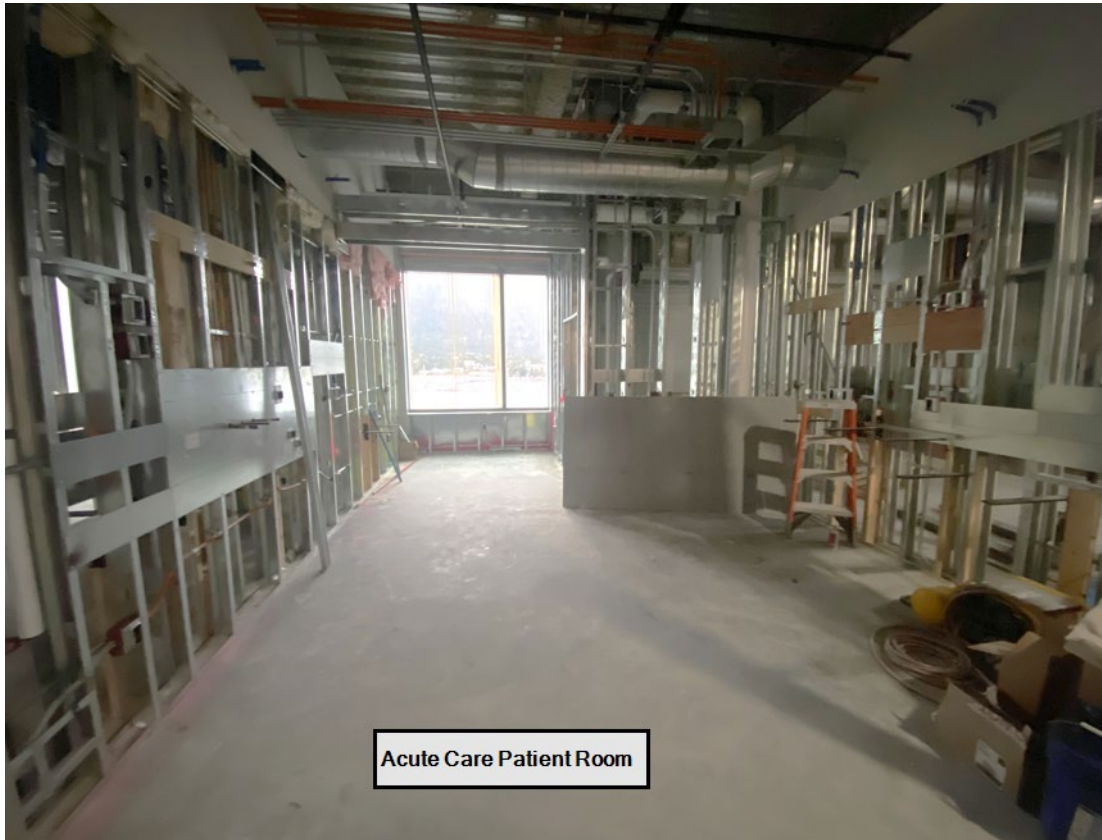


Construction Photos



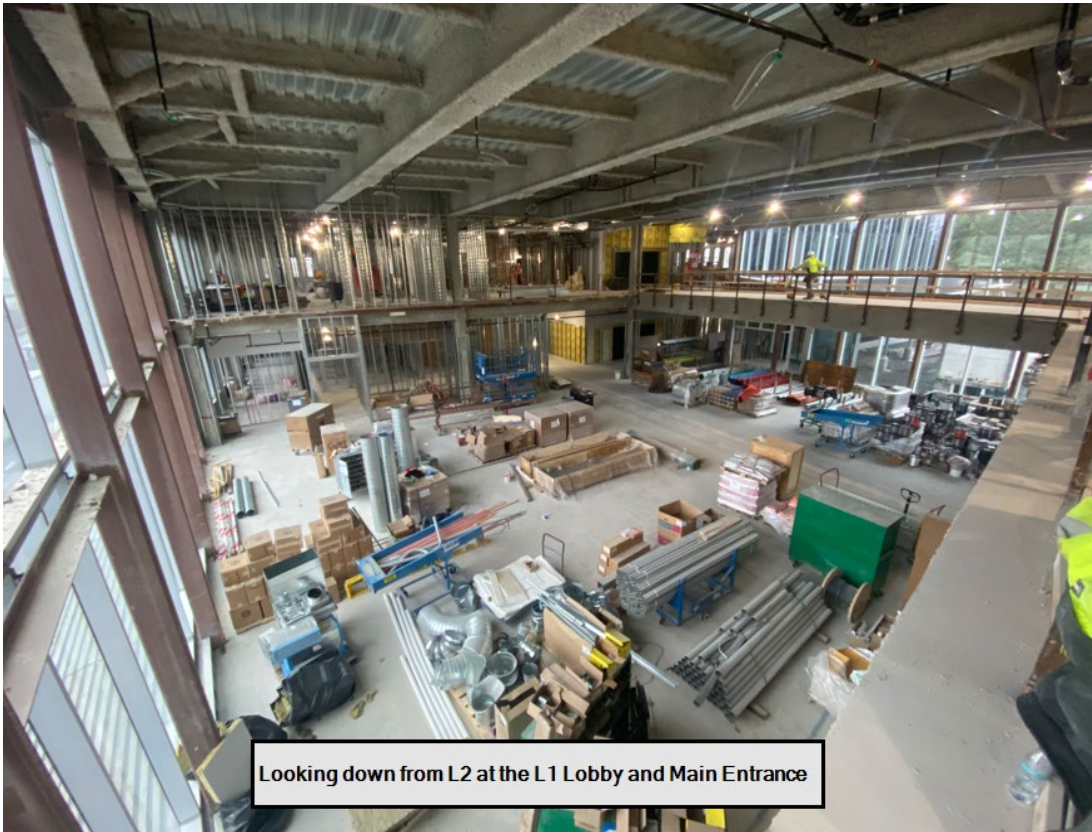


Construction Photos

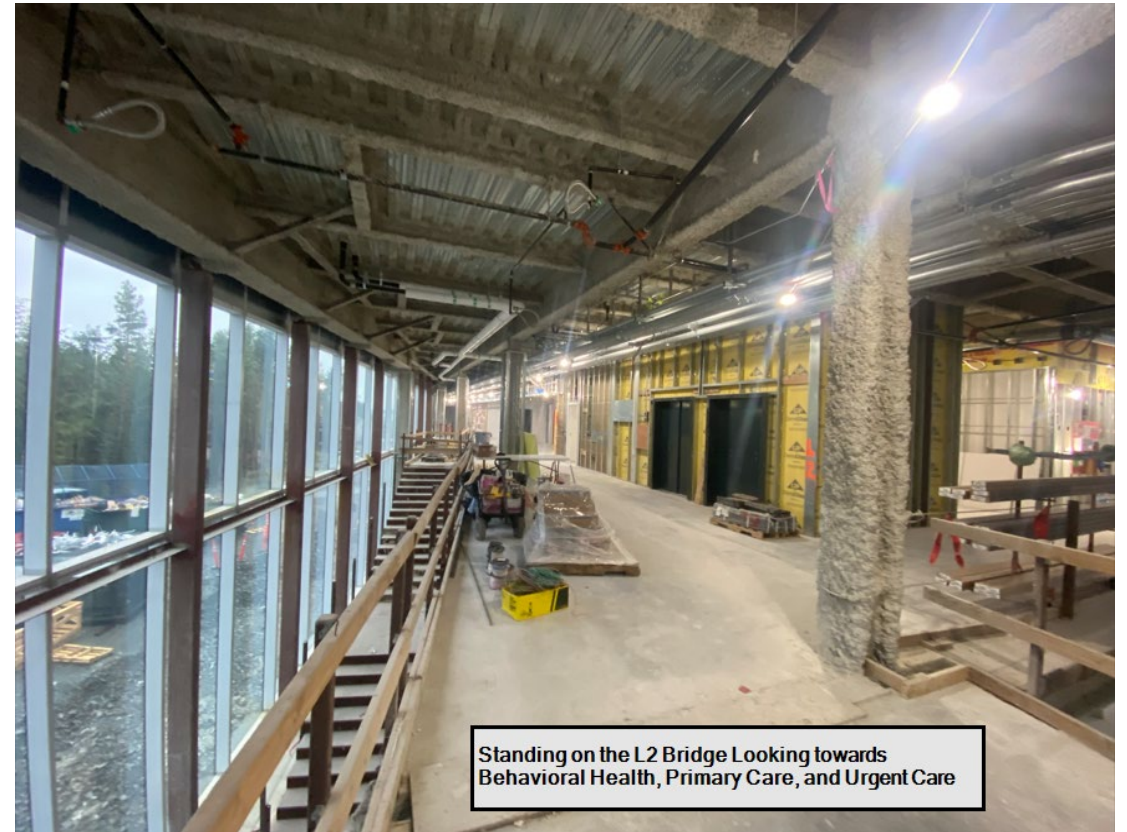




Construction Photos



Looking down from L2 at the L1 Lobby and Main Entrance



Standing on the L2 Bridge Looking towards Behavioral Health, Primary Care, and Urgent Care

A scenic view of a harbor at sunset. Numerous fishing boats are docked in the water, their masts and rigging visible against the sky. The boats are mostly white with blue accents. In the background, there are mountains and a body of water. The sky is filled with clouds, and the sun is setting on the right side, creating a warm orange glow. The word "Questions?" is written in white text on the left side of the image.

Questions?



SEARHC

SOUTHEAST ALASKA REGIONAL HEALTH CONSORTIUM