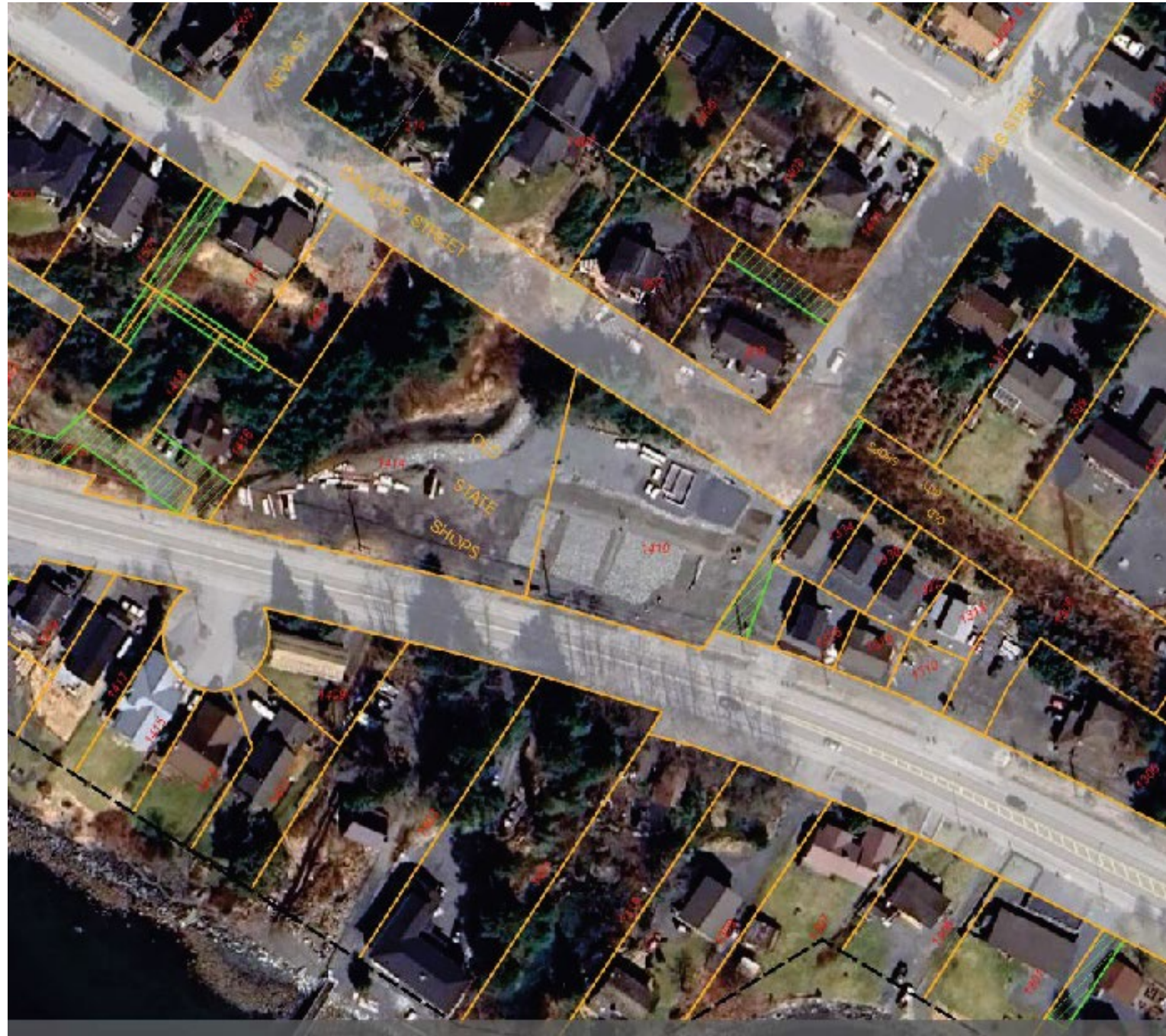


Ariel





Lot 10 (1414 HPR) and
Lot 8 Unsubdivided Remainder (1410 HPR)



Current Utility
Easement
adjacent to
HPR.
Request new
access
easement for
access to Lots
6&7

Lot 5



Lot 8 new
Community
lot site





Pedestrian/ Access and Utility Easement

Property corners

Utilities

