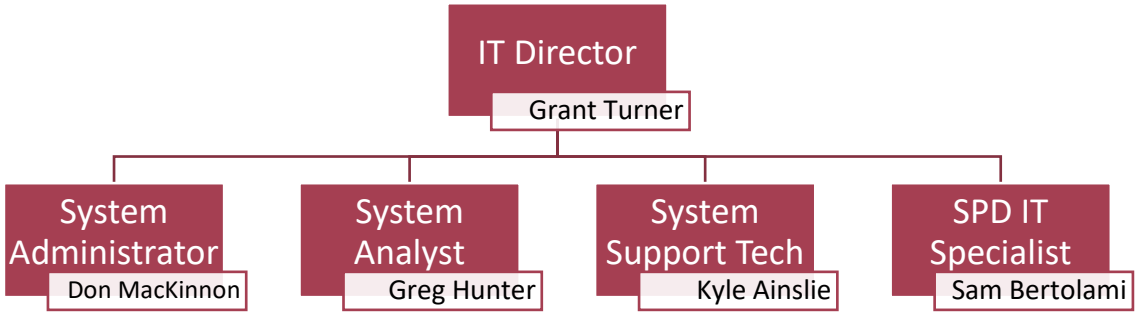




# IT QUARTERLY REPORT

## IT DEPARTMENT ORG CHART:



All FTEs are currently filled for the IT department

## CURRENT PROJECTS STATUS:

### New Website Project Completed

- The new website has successfully launched
- New website is an modern, more easily managed and integrated system

### City Network Infrastructure

- Work is ongoing with other departments to build up city-owned network infrastructure
- Seawalk project has conduit for connection between city hall and HCH/Library

### Network equipment updates

- Core switch at datacenter installed and being configured
- Connected firewalls installed at several locations to increase security

### IT Helpdesk Statistics in the past quarter:

- Tickets Received: 186
- Tickets Resolved: 158
- First Contact Resolution Rate: 65.06%



# Budget Performance Report

Fiscal Year to Date 06/03/26

Include Rollup Account and Rollup to Account

Account	Account Description	Adopted Budget	Budget Amendments	Amended Budget	Current Month Transactions	YTD Encumbrances	YTD Transactions	Budget - YTD Transactions	% Used/ Rec'd	Prior Year Total
Fund <b>300 - Information Technology Fund</b>										
EXPENSE										
Division <b>600 - Operations</b>										
Department <b>630 - Operations</b>										
<b>5110</b>										
5110.001	Regular Salaries/Wages	469,424.16	.00	469,424.16	.00	.00	374,410.69	95,013.47	80	385,100.98
5110.002	Holidays	.00	.00	.00	.00	.00	18,626.42	(18,626.42)	+++	19,584.36
5110.003	Sick Leave	.00	.00	.00	.00	.00	10,997.99	(10,997.99)	+++	22,127.52
5110.004	Overtime	.00	.00	.00	.00	.00	1,658.37	(1,658.37)	+++	3,651.49
5110.010	Temp Wages	35,293.63	.00	35,293.63	.00	.00	.00	35,293.63	0	.00
<b>5110 - Totals</b>		<b>\$504,717.79</b>	<b>\$0.00</b>	<b>\$504,717.79</b>	<b>\$0.00</b>	<b>\$0.00</b>	<b>\$405,693.47</b>	<b>\$99,024.32</b>	<b>80%</b>	<b>\$430,464.35</b>
<b>5120</b>										
5120.001	Annual Leave	18,581.71	.00	18,581.71	.00	.00	32,931.39	(14,349.68)	177	41,193.66
5120.002	SBS	32,078.08	.00	32,078.08	.00	.00	26,971.98	5,106.10	84	28,193.46
5120.003	Medicare	7,587.85	.00	7,587.85	.00	.00	6,380.01	1,207.84	84	6,711.95
5120.004	PERS	103,273.28	.00	103,273.28	.00	.00	96,002.55	7,270.73	93	101,433.49
5120.005	Health Insurance	170,918.88	.00	170,918.88	.00	.00	110,369.49	60,549.39	65	117,715.89
5120.006	Life Insurance	53.64	.00	53.64	.00	.00	49.17	4.47	92	53.64
5120.007	Workmen's Compensation	1,312.20	.00	1,312.20	.00	.00	1,240.61	71.59	95	1,222.48
5120.011	PERS on Behalf	12,094.00	.00	12,094.00	.00	.00	15,145.00	(3,051.00)	125	14,750.00
<b>5120 - Totals</b>		<b>\$345,899.64</b>	<b>\$0.00</b>	<b>\$345,899.64</b>	<b>\$0.00</b>	<b>\$0.00</b>	<b>\$289,090.20</b>	<b>\$56,809.44</b>	<b>84%</b>	<b>\$311,274.57</b>
<b>5201</b>										
5201.000	Training and Travel	10,001.00	.00	10,001.00	.00	.00	1,102.59	8,898.41	11	7,203.46
<b>5201 - Totals</b>		<b>\$10,001.00</b>	<b>\$0.00</b>	<b>\$10,001.00</b>	<b>\$0.00</b>	<b>\$0.00</b>	<b>\$1,102.59</b>	<b>\$8,898.41</b>	<b>11%</b>	<b>\$7,203.46</b>
<b>5204</b>										
5204.000	Telephone	504,000.00	.00	504,000.00	.00	.00	369,378.95	134,621.05	73	377,570.34
5204.001	Cell Phone Stipend	1,500.00	.00	1,500.00	.00	.00	1,375.00	125.00	92	1,500.00
<b>5204 - Totals</b>		<b>\$505,500.00</b>	<b>\$0.00</b>	<b>\$505,500.00</b>	<b>\$0.00</b>	<b>\$0.00</b>	<b>\$370,753.95</b>	<b>\$134,746.05</b>	<b>73%</b>	<b>\$379,070.34</b>
<b>5205</b>										
5205.000	Insurance	46,050.00	.00	46,050.00	3,974.36	.00	45,992.44	57.56	100	42,937.25
<b>5205 - Totals</b>		<b>\$46,050.00</b>	<b>\$0.00</b>	<b>\$46,050.00</b>	<b>\$3,974.36</b>	<b>\$0.00</b>	<b>\$45,992.44</b>	<b>\$57.56</b>	<b>100%</b>	<b>\$42,937.25</b>
<b>5206</b>										
5206.000	Supplies	15,000.00	.00	15,000.00	.00	.00	.00	15,000.00	0	2,585.66
<b>5206 - Totals</b>		<b>\$15,000.00</b>	<b>\$0.00</b>	<b>\$15,000.00</b>	<b>\$0.00</b>	<b>\$0.00</b>	<b>\$0.00</b>	<b>\$15,000.00</b>	<b>0%</b>	<b>\$2,585.66</b>
<b>5207</b>										
5207.000	Repairs and Maintenance	356,672.00	23,902.85	380,574.85	.00	19,572.24	190,914.65	170,087.96	55	336,441.79
<b>5207 - Totals</b>		<b>\$356,672.00</b>	<b>\$23,902.85</b>	<b>\$380,574.85</b>	<b>\$0.00</b>	<b>\$19,572.24</b>	<b>\$190,914.65</b>	<b>\$170,087.96</b>	<b>55%</b>	<b>\$336,441.79</b>
<b>5208</b>										
5208.000	Bldg Repair & Maint	21,246.00	.00	21,246.00	.00	.00	19,475.50	1,770.50	92	14,076.96
<b>5208 - Totals</b>		<b>\$21,246.00</b>	<b>\$0.00</b>	<b>\$21,246.00</b>	<b>\$0.00</b>	<b>\$0.00</b>	<b>\$19,475.50</b>	<b>\$1,770.50</b>	<b>92%</b>	<b>\$14,076.96</b>



# Budget Performance Report

Fiscal Year to Date 06/03/26

Include Rollup Account and Rollup to Account

Account	Account Description	Adopted Budget	Budget Amendments	Amended Budget	Current Month Transactions	YTD Encumbrances	YTD Transactions	Budget - YTD Transactions	% Used/ Rec'd	Prior Year Total
Fund <b>300 - Information Technology Fund</b>										
EXPENSE										
Division <b>600 - Operations</b>										
Department <b>630 - Operations</b>										
<b>5212</b>										
5212.000	Contracted Services	364,326.00	171,197.09	535,523.09	.00	17,854.86	555,200.75	(37,532.52)	107	302,936.70
<b>5212 - Totals</b>		<b>\$364,326.00</b>	<b>\$171,197.09</b>	<b>\$535,523.09</b>	<b>\$0.00</b>	<b>\$17,854.86</b>	<b>\$555,200.75</b>	<b>(\$37,532.52)</b>	<b>107%</b>	<b>\$302,936.70</b>
<b>5214</b>										
5214.000	Interdepartment Services	212,844.00	.00	212,844.00	.00	.00	195,107.00	17,737.00	92	162,192.00
<b>5214 - Totals</b>		<b>\$212,844.00</b>	<b>\$0.00</b>	<b>\$212,844.00</b>	<b>\$0.00</b>	<b>\$0.00</b>	<b>\$195,107.00</b>	<b>\$17,737.00</b>	<b>92%</b>	<b>\$162,192.00</b>
<b>5223</b>										
5223.000	Tools & Small Equipment	207,879.00	60,358.54	268,237.54	.00	65,065.84	146,345.35	56,826.35	79	89,197.73
<b>5223 - Totals</b>		<b>\$207,879.00</b>	<b>\$60,358.54</b>	<b>\$268,237.54</b>	<b>\$0.00</b>	<b>\$65,065.84</b>	<b>\$146,345.35</b>	<b>\$56,826.35</b>	<b>79%</b>	<b>\$89,197.73</b>
<b>5227</b>										
5227.002	Rent-Equipment	.00	.00	.00	.00	.00	.00	.00	+++	(8,552.40)
<b>5227 - Totals</b>		<b>\$0.00</b>	<b>\$0.00</b>	<b>\$0.00</b>	<b>\$0.00</b>	<b>\$0.00</b>	<b>\$0.00</b>	<b>\$0.00</b>	<b>+++</b>	<b>(\$8,552.40)</b>
<b>5290</b>										
5290.000	Other Expenses	.00	.00	.00	.00	.00	.00	.00	+++	2,390.00
<b>5290 - Totals</b>		<b>\$0.00</b>	<b>\$0.00</b>	<b>\$0.00</b>	<b>\$0.00</b>	<b>\$0.00</b>	<b>\$0.00</b>	<b>\$0.00</b>	<b>+++</b>	<b>\$2,390.00</b>
<b>5400</b>										
5400.000	OPEB Expense	.00	.00	.00	.00	.00	.00	.00	+++	38,856.00
<b>5400 - Totals</b>		<b>\$0.00</b>	<b>\$0.00</b>	<b>\$0.00</b>	<b>\$0.00</b>	<b>\$0.00</b>	<b>\$0.00</b>	<b>\$0.00</b>	<b>+++</b>	<b>\$38,856.00</b>
Department <b>630 - Operations Totals</b>		<b>\$2,590,135.43</b>	<b>\$255,458.48</b>	<b>\$2,845,593.91</b>	<b>\$3,974.36</b>	<b>\$102,492.94</b>	<b>\$2,219,675.90</b>	<b>\$523,425.07</b>	<b>82%</b>	<b>\$2,111,074.41</b>
Division <b>600 - Operations Totals</b>		<b>\$2,590,135.43</b>	<b>\$255,458.48</b>	<b>\$2,845,593.91</b>	<b>\$3,974.36</b>	<b>\$102,492.94</b>	<b>\$2,219,675.90</b>	<b>\$523,425.07</b>	<b>82%</b>	<b>\$2,111,074.41</b>
<b>EXPENSE TOTALS</b>		<b>\$2,590,135.43</b>	<b>\$255,458.48</b>	<b>\$2,845,593.91</b>	<b>\$3,974.36</b>	<b>\$102,492.94</b>	<b>\$2,219,675.90</b>	<b>\$523,425.07</b>	<b>82%</b>	<b>\$2,111,074.41</b>
Fund <b>300 - Information Technology Fund Totals</b>										
<b>REVENUE TOTALS</b>		<b>.00</b>	<b>.00</b>	<b>.00</b>	<b>.00</b>	<b>.00</b>	<b>.00</b>	<b>.00</b>	<b>+++</b>	<b>.00</b>
<b>EXPENSE TOTALS</b>		<b>2,590,135.43</b>	<b>255,458.48</b>	<b>2,845,593.91</b>	<b>3,974.36</b>	<b>102,492.94</b>	<b>2,219,675.90</b>	<b>523,425.07</b>	<b>82%</b>	<b>2,111,074.41</b>
Fund <b>300 - Information Technology Fund Totals</b>		<b>(\$2,590,135.43)</b>	<b>(\$255,458.48)</b>	<b>(\$2,845,593.91)</b>	<b>(\$3,974.36)</b>	<b>(\$102,492.94)</b>	<b>(\$2,219,675.90)</b>	<b>(\$523,425.07)</b>		<b>(\$2,111,074.41)</b>
Grand Totals										
<b>REVENUE TOTALS</b>		<b>.00</b>	<b>.00</b>	<b>.00</b>	<b>.00</b>	<b>.00</b>	<b>.00</b>	<b>.00</b>	<b>+++</b>	<b>.00</b>
<b>EXPENSE TOTALS</b>		<b>2,590,135.43</b>	<b>255,458.48</b>	<b>2,845,593.91</b>	<b>3,974.36</b>	<b>102,492.94</b>	<b>2,219,675.90</b>	<b>523,425.07</b>	<b>82%</b>	<b>2,111,074.41</b>
Grand Totals		<b>(\$2,590,135.43)</b>	<b>(\$255,458.48)</b>	<b>(\$2,845,593.91)</b>	<b>(\$3,974.36)</b>	<b>(\$102,492.94)</b>	<b>(\$2,219,675.90)</b>	<b>(\$523,425.07)</b>		<b>(\$2,111,074.41)</b>